

PUBLIC LAND SURVEY MONUMENT RECORD

TYPE OF MONUMENT: HARRISON
 ADAMS COUNTY COORDINATES, NAD 83 (2007)

N. 159329.647

E. 533922.767

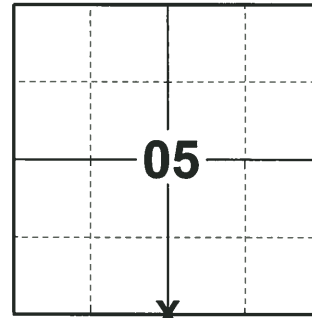
ELEVATION- DATUM

FIELD WORK DATE: 06/18/2018

BASIS FOR MONUMENT LOCATION

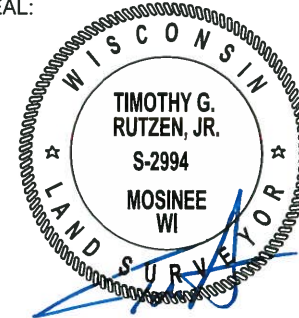
1976 - PLS 1103 RAN EDM/TRANSIT TRAVERSE AROUND SECTIONS 8, 9, 16 AND PARTS OF 21 AND 22 TO DETERMINE THE SEARCH AREAS FOR INVESTIGATION. EXCAVATION WITH A BACKHOE YIELDED NO EVIDENCE OF THE ORIGINAL CORNER OR ANY REMONUMENTATION. FOUND NO MONUMENTATION OF THE CORNER WITH REGARD TO SURVEYS IN SECTION 5 FOR CAMPFIRE LAND, INC. CALCULATED THE CORNER EQUIDISTANT AND ON LINE BETWEEN ADJACENT SECTION CORNERS. SET HARRISON AND TIED OUT.

2018 - PLS 2994 FOUND A HARRISON MONUMENT 6" BELOW THE ROAD SURFACE AND 1 WITNESS. THE MONUMENT AGREES WITH THE EXISTING WITNESS. ACCEPTED THE HARRISON MONUMENT AS THE CORNER LOCATION. SET 4 NEW TIES AND MEASURED TO THE TIES AND WITNESS.



LOCATION
 (INDICATE CORNER BY "X")

SEAL:



DATA SHOWN HERE ON THIS TIE SHEET IS CORRECT AND COMPLETE TO THE BEST OF MY KNOWLEDGE AND BELIEF.

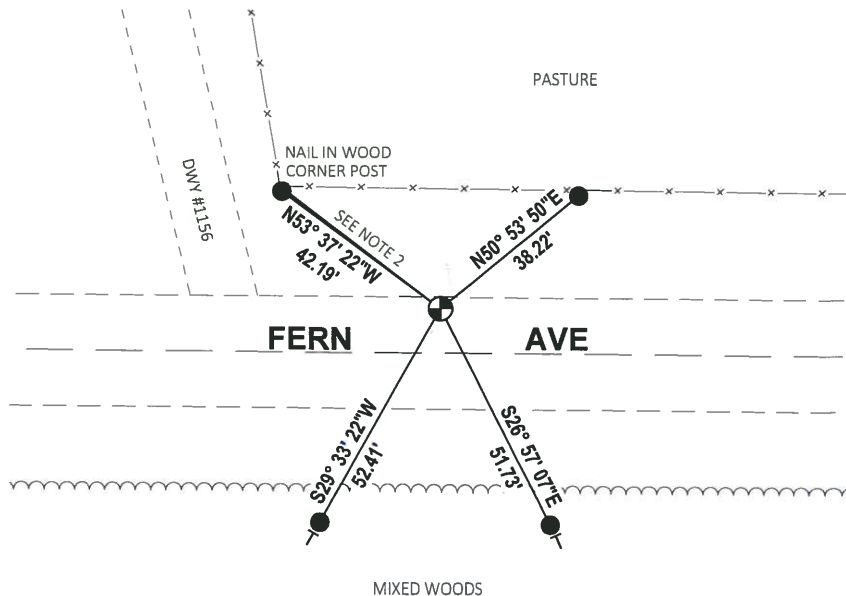
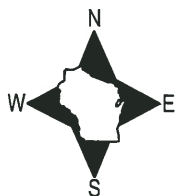
PROFESSIONAL LAND SURVEYOR

DATE 7-18-18

- TIE SKETCH

NOTE 1: THE CORNER FALLS 9'± NORTH OF THE CENTERLINE OF FERN AVE.

NOTE 2: THE NAIL IN CORNER POST FALLS N52° 51' 59"W, 43.15' FROM THE CORNER LOCATION.



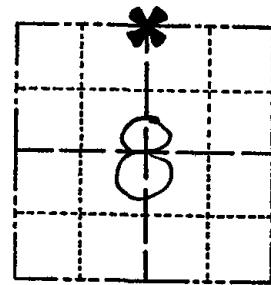
- SET 3/4" x 18" IRON REBAR, 1.50#/FT
- ⊕ FOUND HARRISON MONUMENT
- VINYL "T" POST

ADAMS COUNTY

Survey Monument Record

TYPE OF MONUMENT: Harrison
 STATE PLANE COORDINATES: N _____
 E _____
 ELEVATION — M.S.L. DATUM: _____
 THETA ANGLE: _____
 FIELD BOOK: 37 PAGE 42

CORNER NO. 1028
 SECTION 8
 TOWN 15
 RANGE 6



LOCATION
(Indicated by 'X')

SEAL:



BASIS FOR MONUMENT LOCATION

(Use reverse side if necessary)

Show info such as: History of corner, with reference to Vol. and pg. dates, surveyor; exact description of monument replaced; if location computed, by taped or EDM traverse; landowner remarks, etc.

Ran EDM/transit traverse around Sections 8, 9, 16 and parts of 21 and 22 to determine search areas for investigation.

Excavation with backhoe yielded no evidence of the original corner or any remonumentation. Could find no monumentation of this corner with regard to surveys in Section 5 for Campfire Land, Inc.

Set corner equidistant and on line between adjacent section corners.

Corner set 6-8-76.

CERTIFIED CORRECT:

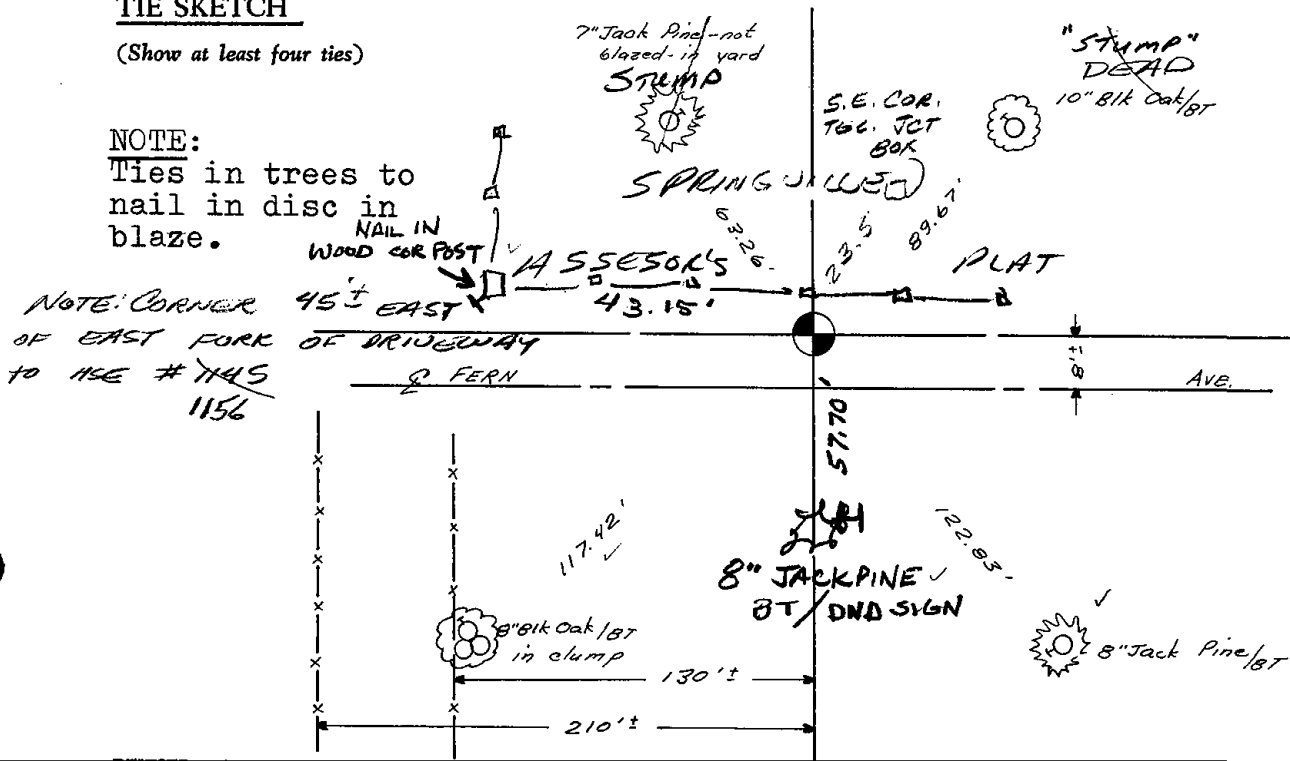
Dale C. Hagen
 Registered Land Surveyor
 DATE: 9-20-76

TIE SKETCH

(Show at least four ties)

NOTE:
Ties in trees to nail in disc in blaze.

NOTE: CORNER 45° EAST OF EAST FORK OF DRIVEWAY TO HSE # 1145 1156



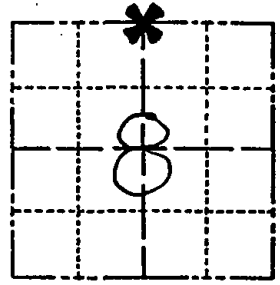
MAINTENANCE RECORD

| Date | Init. | Remarks |
|---------|-------|-------------------|
| 9-8-81 | SK-NJ | TIES O.K |
| 1-17-86 | GK | OK |
| 1/10/96 | JG-SS | 1-NEW TIE, MON OK |
| 1-25-01 | JG | OK |
| 4-26-06 | JG | 2-NEW TIES |
| 1-24-11 | SS | OK |

Survey Monument Record

TYPE OF MONUMENT: Harrison
STATE PLANE COORDINATES: N
E
ELEVATION - M.S.L. DATUM:
THETA ANGLE:
FIELD BOOK: 37 PAGE 42

CORNER NO. 10 48
SECTION 8
TOWN 15
RANGE 6



LOCATION (Indicated by 'X')

SEAL:



BASIS FOR MONUMENT LOCATION

(Use reverse side if necessary)

Show info such as: History of corner, with reference to Vol. and pg. dates, surveyor; exact description of monument replaced; if location computed, by taped or EDM traverse; landowner remarks, etc.

Ran EDM/transit traverse around Sections 8, 9, 16 and parts of 21 and 22 to determine search areas for investigation.

Excavation with backhoe yielded no evidence of the original corner or any remonumentation. Could find no monumentation of this corner with regard to surveys in Section 5 for Campfire Land, Inc.

Set corner equidistant and on line between adjacent section corners.

Corner set 6-8-76.

TIES ON 1145 MC

CERTIFIED CORRECT:

Dale C. Hagen
Registered Land Surveyor
DATE: 9-20-76

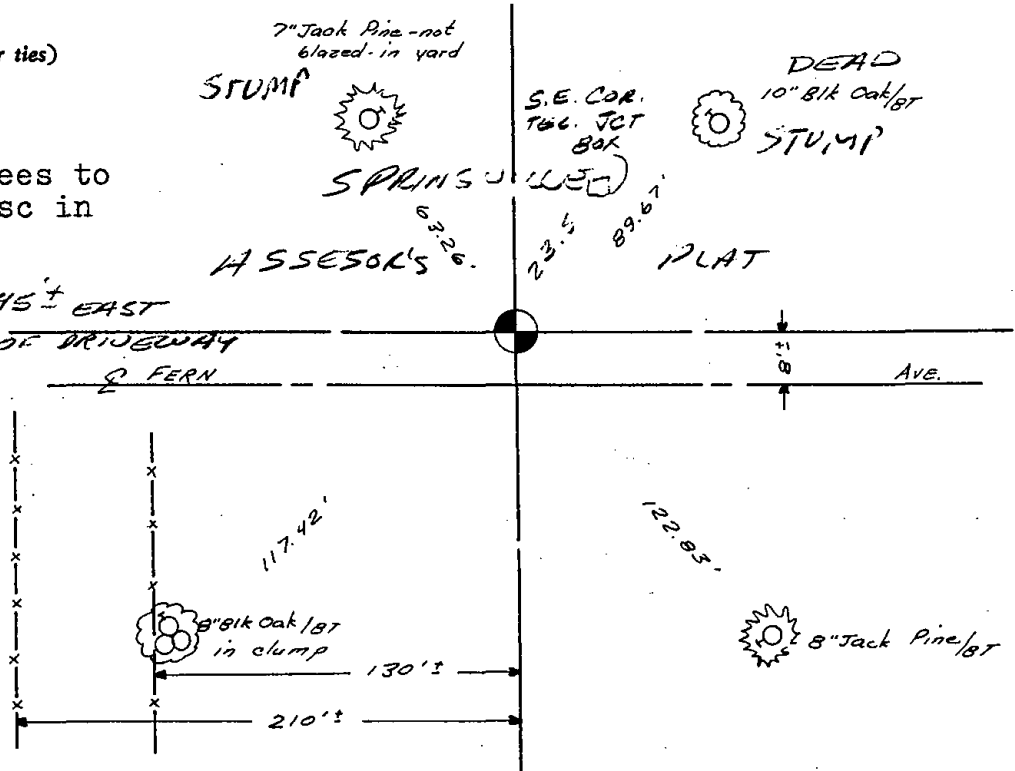
TIE SKETCH

(Show at least four ties)

NOTE:

Ties in trees to nail in disc in blaze.

NOTE: CORNER 45± EAST OF EAST FORK OF BRIDGEWAY TO ASE # 1145

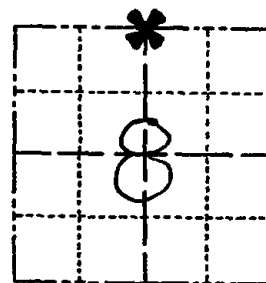


ADAMS COUNTY

Survey Monument Record

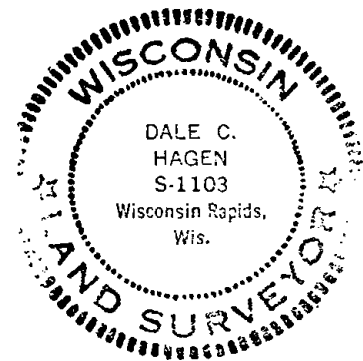
TYPE OF MONUMENT: Harrison
STATE PLANE COORDINATES: N
E
ELEVATION - M.S.L. DATUM:
THETA ANGLE:
FIELD BOOK: 37 PAGE 42

CORNER NO. 1028
SECTION 8
TOWN 15
RANGE 6



LOCATION (Indicated by 'X')

SEAL:



BASIS FOR MONUMENT LOCATION

(Use reverse side if necessary)

Show info such as: History of corner, with reference to Vol. and pg, dates, surveyor; exact description of monument replaced; if location computed, by taped or EDM traverse; landowner remarks, etc.

Ran EDM/transit traverse around Sections 8, 9, 16 and parts of 21 and 22 to determine search areas for investigation.

Excavation with backhoe yielded no evidence of the original corner or any remonumentation. Could find no monumentation of this corner with regard to surveys in Section 5 for Campfire Land, Inc.

Set corner equidistant and on line between adjacent section corners.

Corner set 6-8-76.

CERTIFIED CORRECT:

Dale C Hagen
Registered Land Surveyor
DATE: 9-20-76

ALL OK 1-10-91 KZ-JG
Ties OK Apr 19 84 Kim Carlson

TIE SKETCH

(Show at least four ties)

NOTE: Ties in trees to nail in disc in blaze.

