

PUBLIC LAND SURVEY MONUMENT RECORD

TYPE OF MONUMENT: HARRISON
ADAMS COUNTY COORDINATES, NAD 83 (2007)

N. 159314.311

E. 536550.212

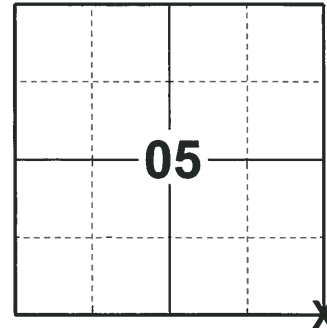
ELEVATION- - - - DATUM - - - -

FIELD WORK DATE: 06/18/2018

BASIS FOR MONUMENT LOCATION

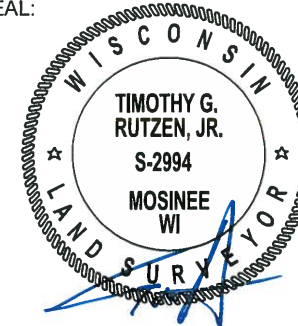
1976 - PLS 1103 RAN EDM/TRANSIT TRAVERSE AROUND SECTIONS 9, 16 AND PARTS OF ADJOINING SECTIONS TO DETERMINE THE SEARCH AREAS FOR INVESTIGATION. EXTENSIVE EXCAVATION WITH A BACKHOE YIELDED NO EVIDENCE OF THE ORIGINAL CORNER OR ANY SUBSEQUENT REMONUMENTATION. CALCULATED THE CORNER BY PROPORTIONING BETWEEN THE NORTHEAST CORNER OF SECTION 9 AND THE NORTHWEST CORNER OF SECTION 8, AND BY DOUBLING OVER THE LINE AND DISTANCES BETWEEN THE SOUTHWEST AND WEST QUARTER CORNERS OF SECTION 9. SET HARRISON AT CALCULATED POSITION AND TIED OUT.

2018 - PLS 2994 FOUND A HARRISON MONUMENT 6" BELOW THE GROUND SURFACE AND 1 PROPERTY CORNER. ACCEPTED THE HARRISON MONUMENT AS THE BEST EVIDENCE OF THE CORNER LOCATION. SET 3 NEW TIES AND MEASURED TO THE TIES AND PROPERTY CORNER.



LOCATION
(INDICATE CORNER BY "X")

SEAL:



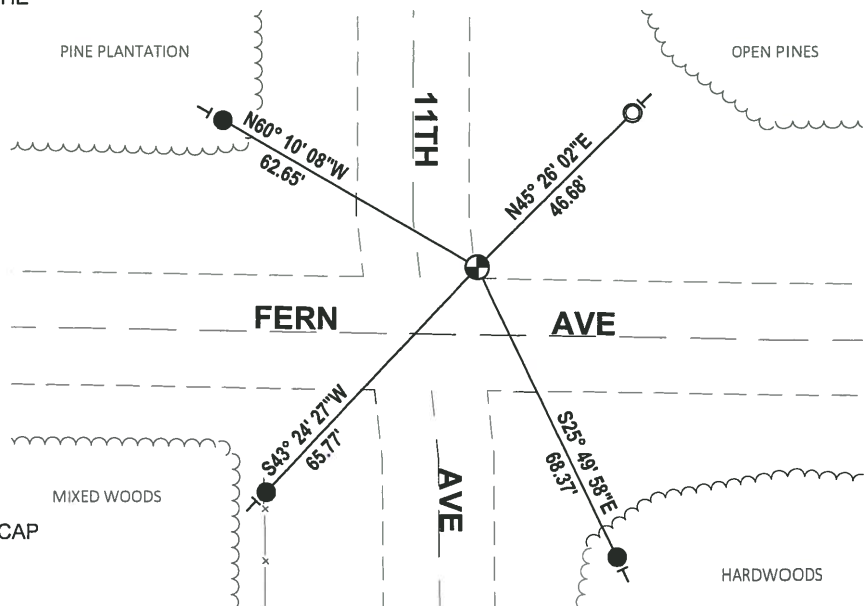
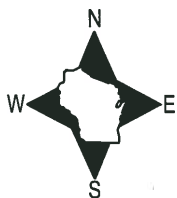
DATA SHOWN HERE ON THIS TIE SHEET IS CORRECT AND COMPLETE TO THE BEST OF MY KNOWLEDGE AND BELIEF.

PROFESSIONAL LAND SURVEYOR

DATE 7-18-18

- TIE SKETCH

NOTE: THE CORNER FALLS 14'± NORTH OF THE CENTERLINE OF FERN AVE AND 13'± EAST OF THE CENTERLINE OF 11TH AVE.



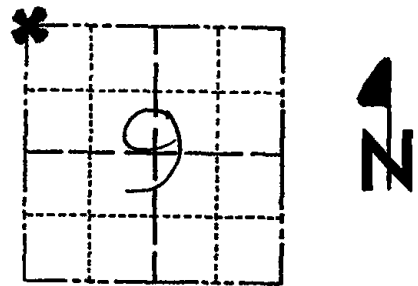
- SET 3/4" x 18" IRON REBAR, 1.50#/FT
- FOUND 1-1/4" O.D. IRON PIPE W/ALUMINUM CAP
- ⊕ FOUND HARRISON MONUMENT
- VINYL "T" POST

ADAMS COUNTY

Survey Monument Record

TYPE OF MONUMENT: Harrison
 STATE PLANE COORDINATES: N _____
 E _____
 ELEVATION — M.S.L. DATUM: _____
 THETA ANGLE: _____
 FIELD BOOK: 37 PAGE 43

CORNER NO. 1029
 SECTION 9
 TOWN 15
 RANGE 6



LOCATION
(Indicated by 'X')

SEAL:

BASIS FOR MONUMENT LOCATION

(Use reverse side if necessary)

Show info such as: History of corner, with reference to Vol. and pg, dates, surveyor; exact description of monument replaced; if location computed, by taped or EDM traverse; landowner remarks, etc.

transit

Ran EDM/~~T~~ traverse around Sections 9 and 16, and parts of the adjoining sections to determine the search areas for investigation.

Extensive excavation with backhoe yielded no evidence of the original corner or any subsequent remonumentation.

Set corner by proportioning between the Northeast corner of Section 9 and the Northwest corner of Section 8, and by doubling over the line and distance between the Southwest and West Quarter corners of Section 9.



Set 6-8-76.

CERTIFIED CORRECT:

Dale C. Hagen
 Registered Land Surveyor
 DATE: 9-20-76

TIE SKETCH

(Show at least four ties)

NOTE:

Ties in trees to nail and disc in blaze.

