

## PUBLIC LAND SURVEY MONUMENT RECORD

TYPE OF MONUMENT: HARRISON  
 ADAMS COUNTY COORDINATES, NAD 83 (2007)

N. 159298.458

E. 539180.934

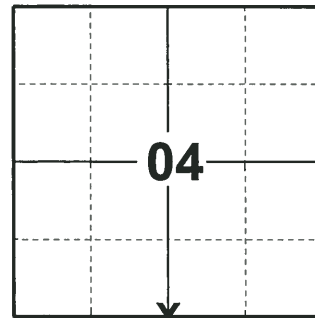
ELEVATION- - - - DATUM - - - -

FIELD WORK DATE: 06/18/2018

### BASIS FOR MONUMENT LOCATION

1976 - PLS 1103 RAN EDM/TRANSIT TRAVERSE AROUND SECTIONS 9, 16 AND PARTS OF ADJOINING SECTIONS TO DETERMINE THE SEARCH AREAS. EXCAVATION WITH A BACKHOE YIELDED NO EVIDENCE OF THE ORIGINAL CORNER OR ANY REMONUMENTATION. CALCULATED THE CORNER ON LINE AND PROPORTIONATE TO ORIGINAL NOTES BETWEEN THE NORTHEAST AND NORTHWEST CORNERS OF SECTION 9. SET HARRISON AND TIED OUT.

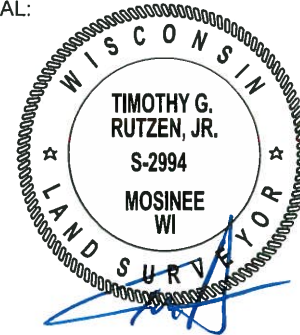
2018 - PLS 2994 FOUND A HARRISON MONUMENT 6" BELOW THE ROAD SURFACE. FOUND NO EVIDENCE OF ANY OF THE TIES OR WITNESSES. ACCEPTED THE HARRISON MONUMENT AS THE BEST EVIDENCE OF THE CORNER LOCATION. SET 4 NEW TIES AND MEASURED TO THE TIES.



**LOCATION**

(INDICATE CORNER BY "X")

SEAL:



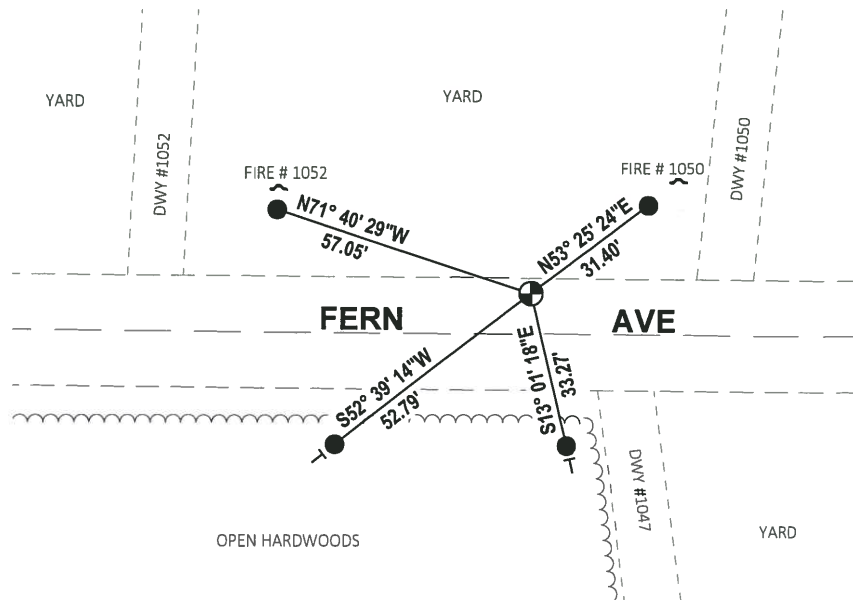
DATA SHOWN HERE ON THIS TIE SHEET IS CORRECT AND COMPLETE TO THE BEST OF MY KNOWLEDGE AND BELIEF.

PROFESSIONAL LAND SURVEYOR

DATE 7-18-18

### - TIE SKETCH

NOTE: THE CORNER FALLS 9± NORTH OF THE CENTERLINE OF FERN AVE.



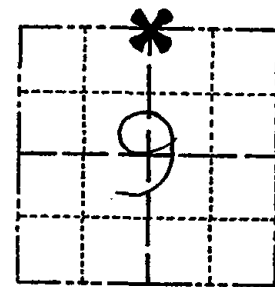
- SET 3/4" x 18" IRON REBAR, 1.50#/FT
- ⊕ FOUND HARRISON MONUMENT
- | VINYL "T" POST

ADAMS COUNTY

Survey Monument Record

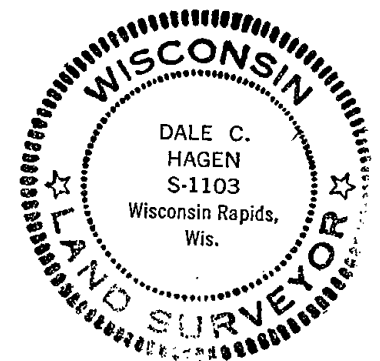
TYPE OF MONUMENT: Harrison
STATE PLANE COORDINATES: N
E
ELEVATION - M.S.L. DATUM:
THETA ANGLE:
FIELD BOOK: 37 PAGE 43

CORNER NO. 1030
SECTION 9
TOWN 15
RANGE 6



LOCATION (Indicated by 'X')

SEAL:



BASIS FOR MONUMENT LOCATION

(Use reverse side if necessary)

Show info such as: History of corner, with reference to Vol. and pg. dates, surveyor; exact description of monument replaced; if location computed, by taped or EDM traverse; landowner remarks, etc.

transit
Ran EDM/TP traverse around Sections 9 and 16, and parts of adjoining sections to determine search areas.

Excavation with backhoe yielded no evidence of the original corner or any remonumentation.

Set corner on line and proportionate to original notes between the Northeast and Northwest corners of Section 9.

Set 6-8-76.

CERTIFIED CORRECT:

Dale C. Hagen

Registered Land Surveyor

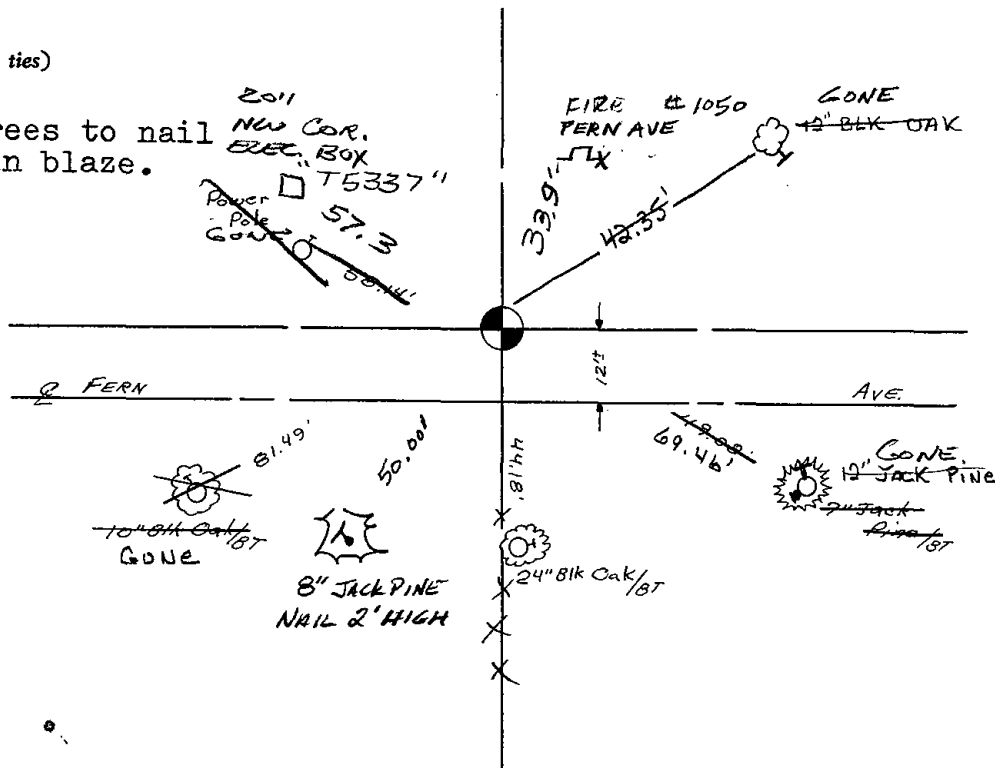
DATE: 9-20-76

TIE SKETCH

(Show at least four ties)

NOTE:

Ties in trees to nail and disc in blaze.



MAINTENANCE RECORD

Date	Init.	Remarks
12-29-81	RW-SK	MON + TIES o.k.
1-17-86	GR	OK
1-10-91	KE-JG	ALL OK
1-10-96	JG-SS	1-NEW 1-GONE
4-26-06	JG	OK
01-13-11	SS	1 NEW TIE

ADAMS COUNTY

Survey Monument Record

TYPE OF MONUMENT: Harrison

STATE PLANE COORDINATES: N \_\_\_\_\_  
E \_\_\_\_\_

ELEVATION — M.S.L. DATUM: \_\_\_\_\_

THETA ANGLE: \_\_\_\_\_

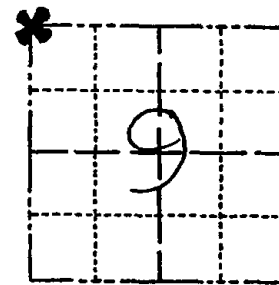
FIELD BOOK: 37 PAGE 43

CORNER NO. 1029

SECTION 9

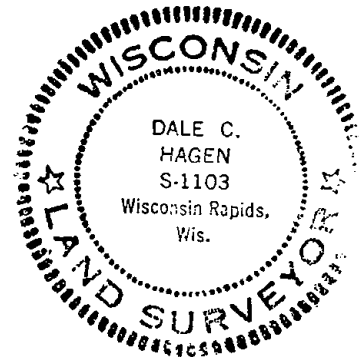
TOWN 15

RANGE 6



LOCATION  
(Indicated by 'X')

SEAL:



BASIS FOR MONUMENT LOCATION

(Use reverse side if necessary)

Show info such as: History of corner, with reference to Vol. and pg. dates, surveyor; exact description of monument replaced; if location computed, by taped or EDM traverse; landowner remarks, etc.

transit

Ran EDM/~~72~~ traverse around Sections 9 and 16, and parts of the adjoining sections to determine the search areas for investigation.

Extensive excavation with backhoe yielded no evidence of the original corner or any subsequent remonumentation.

Set corner by proportioning between the Northeast corner of Section 9 and the Northwest corner of Section 8, and by doubling over the line and distance between the Southwest and West Quarter corners of Section 9.

Set 6-8-76.

CERTIFIED CORRECT:

Dale C. Hagen  
Registered Land Surveyor

DATE: 9-20-76

ALL OK KZ-SG 1-10-91  
Ties OK Apr 1984 Ken Carlson

TIE SKETCH

(Show at least four ties)

NOTE:

Ties in trees to nail and disc in blaze.

