

## PUBLIC LAND SURVEY MONUMENT RECORD

TYPE OF MONUMENT: HARRISON  
ADAMS COUNTY COORDINATES, NAD 83 (2007)

N. 159523.888

E. 547098.455

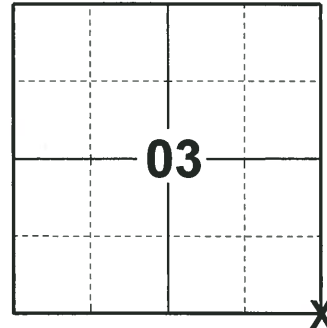
ELEVATION-      -      -      DATUM      -      -     

FIELD WORK DATE: 06/14/2018

### BASIS FOR MONUMENT LOCATION

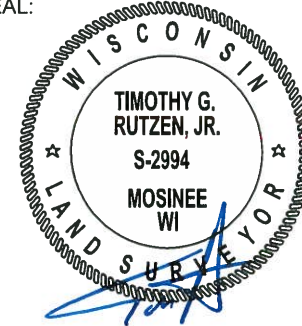
1979 - PLS 1478 CALCULATED POSITION BY DOUBLING OVER BEARING AND DISTANCES BETWEEN THE TWO STONES FOUND TO THE NORTH. THE STONES TO THE NORTH ARE BELIEVED TO HAVE BEEN SET BY M.C. SMITH AS INDICATED IN VOL. 1 PAGE 53 OF THE ADAMS COUNTY SURVEYOR RECORDS. SET HARRISON AT CALCULATED POSITION AND TIED OUT.

2018 - PLS 2994 FOUND A HARRISON MONUMENT FLUSH WITH THE GROUND SURFACE, 1 TIE AND 3 WITNESS TREES. THE MONUMENT AGREES WITH THE EXISTING TIE AND WITNESS TREES. ACCEPTED THE HARRISON MONUMENT AS THE CORNER LOCATION. SET 3 NEW TIES AND MEASURED TO THE TIES AND WITNESS TREES.



**LOCATION**  
(INDICATE CORNER BY "X")

SEAL:

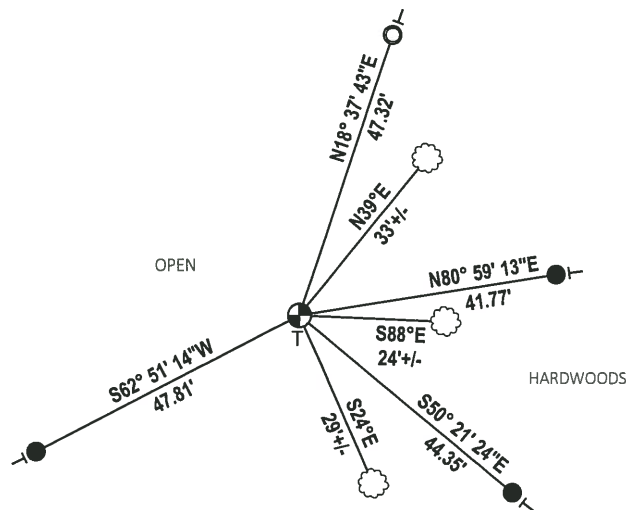


DATA SHOWN HERE ON THIS TIE SHEET IS CORRECT AND COMPLETE TO THE BEST OF MY KNOWLEDGE AND BELIEF.

PROFESSIONAL LAND SURVEYOR

DATE 7-18-18

### - TIE SKETCH

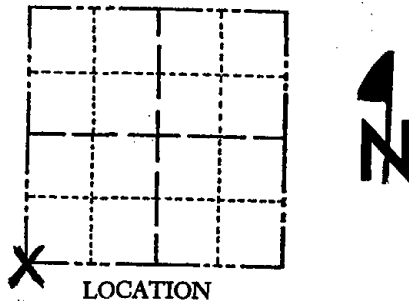


- SET 3/4" x 18" IRON REBAR, 1.50#/FT
- FOUND 1-1/4" O.D. IRON PIPE
- ⊕ FOUND HARRISON MONUMENT
- └ VINYL "T" POST
- ☼ WITNESS TREE

# Government Land Corner Certificate

Adams County  
 TYPE OF MONUMENT: HARRISON  
 STATE PLANE COORDINATES: N \_\_\_\_\_  
 E \_\_\_\_\_  
 ELEVATION — M.S.L. DATUM: \_\_\_\_\_  
 THETA ANGLE: \_\_\_\_\_  
 FIELD BOOK: 57 PAGE 97  
 DRAWN BY: R. NUBER

CORNER NO. 29  
 SECTION 2  
 TOWN 15  
 RANGE 6



LOCATION (Indicated by 'X')

## BASIS FOR MONUMENT LOCATION

Show info such as: History of corner, with reference to Vol. and pg., dates, surveyor; exact description of monument replaced; if location computed, by taped or EDM traverse; landowner remarks, etc. (Use reverse side if necessary)

Doubled over bearing and distances between two stones found to the north. the stones to the north are believed to have been set by M.C. Smith as indicated in Vol. 1 page 53 of the Adams county surveyor records.

SEAL:



1-29-96 O.K. GR-SS  
 ALL OK 3-15-91 JG  
 2-19-96 CR-JG ALL OK  
 2-6-01 - JG - OK  
 4-26-06 - JG - OK  
 7-11-11 SS - 1 NEW

DATA SHOWN HERE ON CERTIFIED CORRECT:

*Gregory P. Rhinehart*  
Registered Land Surveyor

DATE: 9/4/79

## TIE SKETCH

Show at least four ties, also fence lines, roads, topo, size and type of witness trees' and if off road - best way to arrive at corner.

