

PUBLIC LAND SURVEY MONUMENT RECORD

TYPE OF MONUMENT: HARRISON (BROKEN-TOP)
ADAMS COUNTY COORDINATES, NAD 83 (2007)

N. 159399.235

E. 555062.668

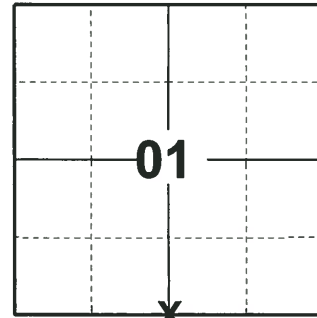
ELEVATION- - - - DATUM - - - -

FIELD WORK DATE: 06/13/2018

BASIS FOR MONUMENT LOCATION

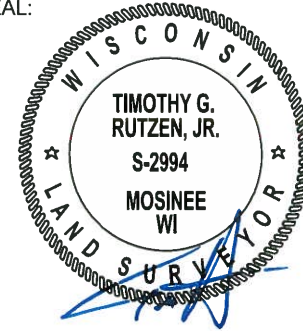
1975 - PLS 1103 CALCULATED POSITION EQUIDISTANT AND ON LINE BETWEEN ADJACENT SECTION CORNERS. RAN EDM/TRANSIT TRAVERSE OF THE ENTIRE AREA TO DETERMINE SEARCH AREAS FOR THE CORNERS. EXCAVATION YIELDED NO EVIDENCE OF ANY MONUMENTATION. SET HARRISON AT CALCULATED POSITION AND TIED OUT.

2018 - PLS 2994 FOUND A HARRISON MONUMENT WITH A BROKEN-TOP 6" BELOW THE GROUND SURFACE AND 2 WITNESSES. THE MONUMENT AGREES WITH THE EXISTING WITNESSES. ACCEPTED THE HARRISON MONUMENT WITH A BROKEN-TOP AS THE CORNER LOCATION. SET 4 NEW TIES AND MEASURED TO THE TIES AND WITNESSES.



LOCATION
(INDICATE CORNER BY "X")

SEAL:



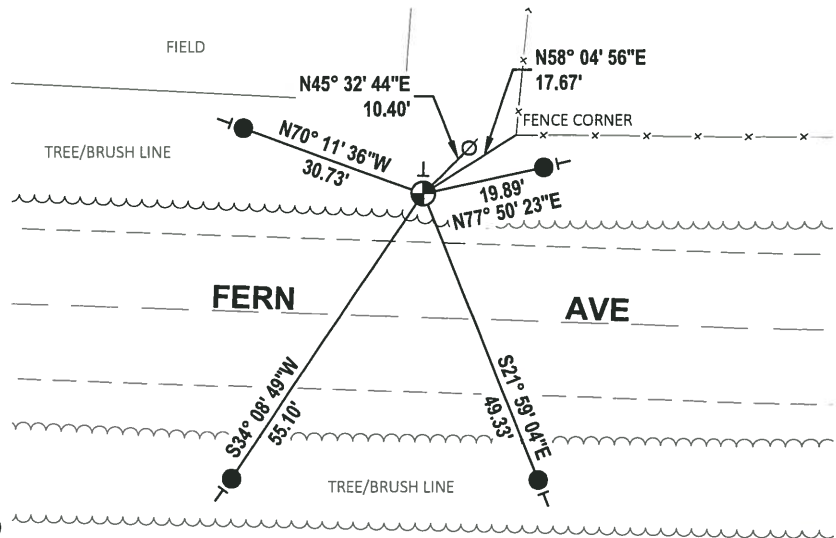
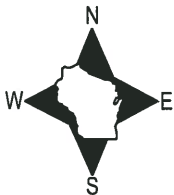
DATA SHOWN HERE ON THIS TIE SHEET IS CORRECT AND COMPLETE TO THE BEST OF MY KNOWLEDGE AND BELIEF.

PROFESSIONAL LAND SURVEYOR

DATE 7-18-18

- TIE SKETCH

NOTE: THE CORNER FALLS 20'± NORTH OF THE CENTERLINE OF FERN AVE.



- SET 3/4" x 18" IRON REBAR, 1.50#/FT
- ⊕ FOUND HARRISON MONUMENT (BROKEN-TOP)
- ⊙ WITNESS POWER POLE
- VINYL "T" POST

FIELD

ADAMS COUNTY

Survey Monument Record

TYPE OF MONUMENT: Harrison Monument

STATE PLANE COORDINATES: N _____

E _____

ELEVATION — M.S.L. DATUM: _____

THETA ANGLE: _____

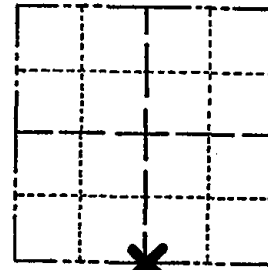
FIELD BOOK: _____ PAGE _____

CORNER NO. 718 (32)

SECTION 1

TOWN 15

RANGE 6



LOCATION
(Indicated by 'X')

SEAL:

BASIS FOR MONUMENT LOCATION

(Use reverse side if necessary)

Show info such as: History of corner, with reference to Vol. and pg, dates, surveyor; exact description of monument replaced; if location computed, by taped or EDM traverse; landowner remarks, etc.

Equidistant and on line between adjacent section corners.

Ran EDM/transit traverse of entire area to determine search areas for the corners.
Excavation yielded no evidence of any monumentation.



CORNER O.K. 4-23-76 RN-SS
MAINTENANCE RECORD

| Date | Init. | Remarks |
|----------|-------|-------------|
| 12-30-81 | SK-RW | CORNER O.K. |
| 1-16-86 | GR-SS | " " |
| 1-14-91 | KZ-JG | ALL OK |
| 11-22-95 | SS | O/K |
| 2-6-01 | JG | OK |
| 4-28-06 | JG | 2-NEW TIES |
| 12-21-11 | ML | 1 NEW TIE |

CERTIFIED CORRECT
Dale C. Hagen
Registered Land Surveyor
DATE: 4/23/76

TIE SKETCH

(Show at least four ties)

NOTE: Ties in trees to nail in disc.

