

12 SECTION 15 TOWN 06 RANGE

ADAMS COUNTY

COUNTY CORNER NO: 40
 ROMPORTOL ID: 41506122000

PUBLIC LAND SURVEY MONUMENT RECORD

TYPE OF MONUMENT: HARRISON
 ADAMS COUNTY COORDINATES, NAD 83 (2007)

N. 156682.868

E. 557735.347

ELEVATION- --- DATUM ---

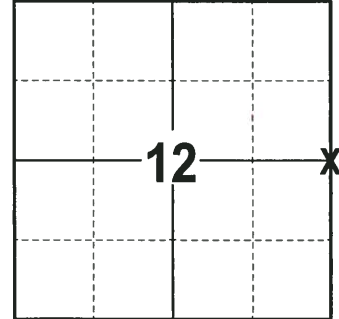
FIELD WORK DATE: 09/19/2017

BASIS FOR MONUMENT LOCATION

1972 - PLS 981 SET A 30" HARRISON MONUMENT AT THE CORNER LOCATION AND TIED OUT.

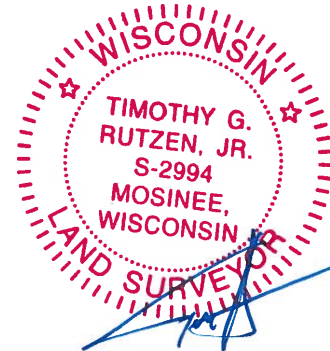
1999 - PLS 2281 HARRISON RE-SET AFTER COMPLETION OF COUNTY HIGHWAY B RECONSTRUCTION PROJECT. LOCATION IS BASED ON THE EXISTING MONUMENT FOUND BEFORE CONSTRUCTION BEGAN. CORNER WAS RE-TIED.

2017 - PLS 2994 FOUND A HARRISON MONUMENT 6" BELOW THE ROAD SURFACE AND 1 WITNESS. FOUND ALL 4 OF THE 1-1/4" O.D. IRON PIPE TIES SET BY PLS 2281. THEY WERE ALL DISTURBED. THE MONUMENT DOES AGREE WITH THE EXISTING WITNESS. ACCEPTED THE HARRISON MONUMENT AS THE CORNER LOCATION. SET 4 NEW TIES AND MEASURED TO THE TIES AND WITNESS.



LOCATION
 (INDICATE CORNER BY "X")

SEAL:



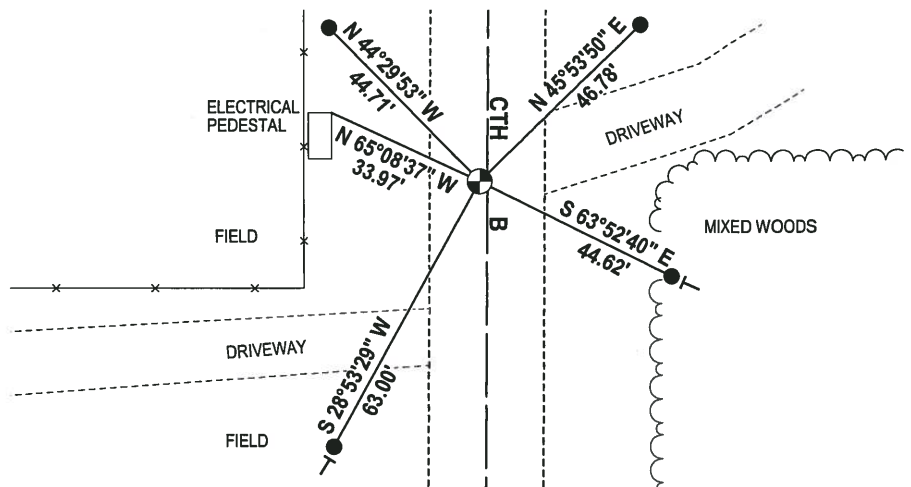
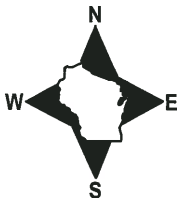
DATA SHOWN HERE ON THIS TIE SHEET IS CORRECT AND COMPLETE TO THE BEST OF MY KNOWLEDGE AND BELIEF.

PROFESSIONAL LAND SURVEYOR

DATE 11-15-17

- TIE SKETCH

NOTE: THE CORNER FALLS 2'± WEST OF THE CENTERLINE OF CTH B.



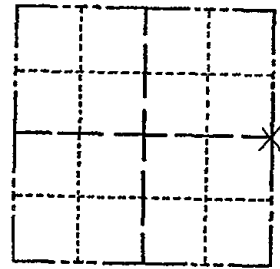
- 3/4" x 18" IRON REBAR SET, 1.50#/FT
- ⊕ HARRISON FOUND
- VINYL "T" POST

ADAMS COUNTY

Survey Monument Record

TYPE OF MONUMENT: 30" HARRISON
 STATE PLANE COORDINATES: N _____
 E _____
 ELEVATION — M.S.L. DATUM: _____
 THETA ANGLE: _____
 FIELD BOOK: 103 PAGE 133

CORNER NO. 133
 SECTION 12
 TOWN 15
 RANGE 6



LOCATION
(Indicated by 'X')

SEAL:

BASIS FOR MONUMENT LOCATION

(Use reverse side if necessary)

Show info such as: History of corner, with reference to Vol. and pg, dates, surveyor; exact description of monument replaced; if location computed, by taped or EDM traverse; landowner remarks, etc.

Set 30" Harrison monument on May 17, 1972.

Sam T. Mullen R.L.S. 981

CORNER O.K. 4-23-75 RN-SS

MAINTENANCE RECORD

Date	Init.	Remarks
12-30-81	SK-RW	Mon + Juba O.K.
1-16-86	GR-SS	" "
1-14-91	KZ-JG	ALL OK
11-22-95	SS	OK
SEE ATTACHED SHEET GROHOLSKI, 12/21/99		
2-6-01	JG	1-GONE, SEE ATTACHED SHEET
3-13-06	JG-SS	OK "
12-21-11	ML	OK "

CERTIFIED CORRECT:

Registered Land Surveyor

DATE: _____

TIE SKETCH

(Show at least four ties)

