

## PUBLIC LAND SURVEY MONUMENT RECORD

TYPE OF MONUMENT: 1-1/4" O.D. IRON PIPE  
ADAMS COUNTY COORDINATES, NAD 83 (2007)

N. 154038.555

E. 528638.673

ELEVATION-      DATUM     

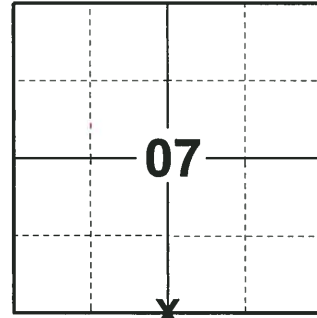
FIELD WORK DATE: 07/02/2018

### BASIS FOR MONUMENT LOCATION

1974 - PLS (UNKNOWN) FOUND A STEEL POST AT THE END OF THE FENCE LINE, ALL BUT 2' OF IT WAS IN THE GROUND. THIS STEEL POST WAS CAREFULLY REFERENCED AND REMOVED. SET A HARRISON MONUMENT THE SAME AND TIED OUT. MR. MIKE J. PIETRZAK, ADJACENT LAND OWNER ASSURED ME THIS POST HAD BEEN THE CORNER FOR MANY YEARS. HE COULD NOT TELL ME WHO SET THE 2" PIPE THAT WAS NEAR THE CORNER.

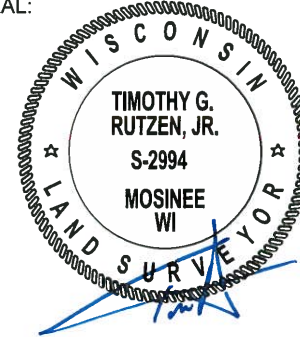
1997 - PLS 2021 FOUND HARRISON FROM 1974 TIE SHEET AND A 1" PIPE WITH A PLASTIC CAP, BUT NO RECORD OF THIS BEING SET. FIT KIEDROWSKI SECTION SUMMARY VERY WELL. ACCEPTED AS THE CORNER AND TIED OUT.

2018 - PLS 2994 FOUND THE 1-1/4" O.D. IRON PIPE AS SHOWN PER TIE SHEET IN 1997. ALSO FOUND THE HARRISON SET IN THE 1974 TIE SHEET. VERIFIED THE CORNER TO BE ON LINE WITH THE SE AND SW CORNERS BUT IS 62'± FROM BEING EQUIDISTANT. ACCEPTED THE 1-1/4" O.D. IRON PIPE AS THE CORNER LOCATION. SET 2 NEW TIES AND MEASURED TO THE TIES.



**LOCATION**  
(INDICATE CORNER BY "X")

SEAL:



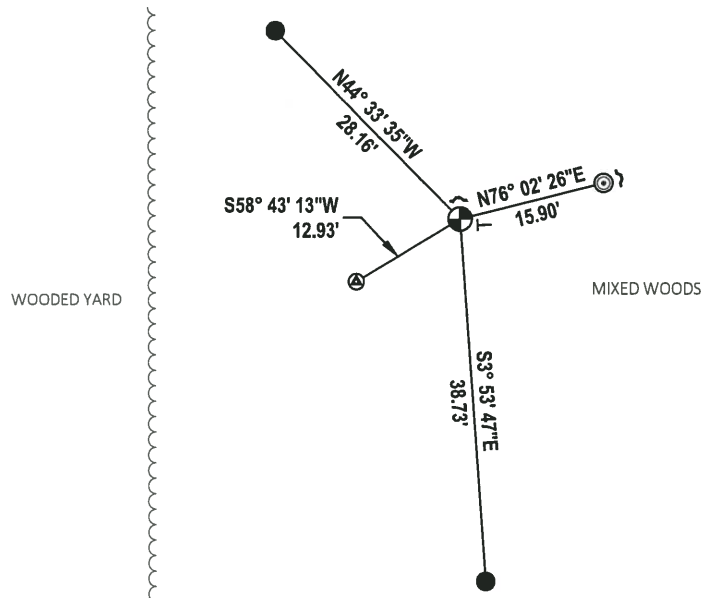
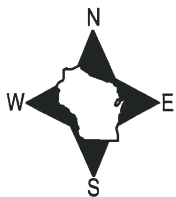
DATA SHOWN HERE ON THIS TIE SHEET IS CORRECT AND COMPLETE TO THE BEST OF MY KNOWLEDGE AND BELIEF.

PROFESSIONAL LAND SURVEYOR

DATE 8-10-18

### - TIE SKETCH

NOTE: THE CORNER FALLS 150'± SOUTHEAST OF HOUSE #1371.



- SET 3/4" x 18" IRON REBAR, 1.50#/FT
- ◎ FOUND 2-3/8" O.D. IRON PIPE
- ⊙ FOUND HARRISON MONUMENT
- ⊕ FOUND 1-1/4" O.D. IRON PIPE
- ↙ STEEL FENCE POST
- VINYL "T" POST

ADAMS COUNTY

Survey Monument Record

TYPE OF MONUMENT: HARRISON  
STATE PLANE COORDINATES: N \_\_\_\_\_  
E \_\_\_\_\_

ELEVATION — M.S.L. DATUM: \_\_\_\_\_

THETA ANGLE: \_\_\_\_\_

FIELD BOOK: \_\_\_\_\_ PAGE \_\_\_\_\_

Rod & Gun Club

BASIS FOR MONUMENT LOCATION

(Use reverse side if necessary)

Show info such as: History of corner, with reference to Vol. and pg, dates, surveyor; exact description of monument replaced; if location computed, by taped or EDM traverse; landowner remarks, etc.

At the end of the line fence was a steel post all but 2' of it was in the ground. This steel post was carefully referenced and removed, being replaced with the new Harrison marker.  
Mr. Mike J. Pietrzak, adjacent land owner assured me this post had been the corner for many years. He could not tell me who had set the 2" pipe near by. Corner justifies very well by using the EDM traverse.

- CORNER O.K. 11-2-76 RN-SS
- 1 NEW TIE 1-28-86 GR-SS
- 1-NEW TIE 3-15-91 JG
- 1-NEW TIE, 1-GONE, 2/19/96 JG-CR
- OK, 2-12-01 JG-MH
- 1-24-11 SS - HARRISON AND CARLSON TO 1" TIP BOTH IN PLACE

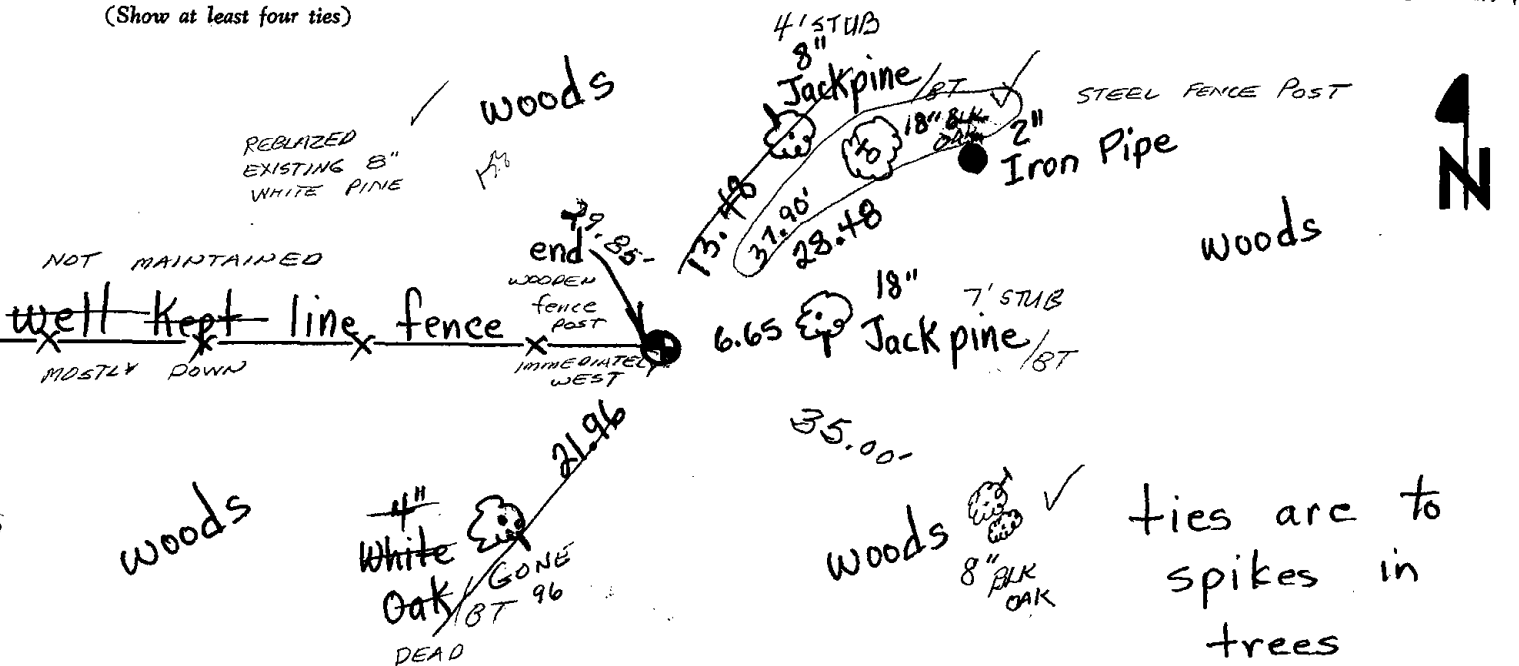
*SEE CARLSON TIES 5-19-97*

CERTIFIED CORRECT:  
James J. Carroll  
Registered Land Surveyor  
DATE: 8/7/74

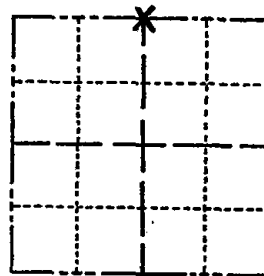
TIE SKETCH

Enter thru Baker's Valley - south across dam BRUSH LINE N 95 100± WEST OF DAM

(Show at least four ties)



CORNER NO. 497  
SECTION 18  
TOWN 15  
RANGE 6 E



LOCATION (Indicated by 'X')

SEAL:



# U.S. PUBLIC LAND SURVEY MONUMENT RECORD

## ADAMS COUNTY

TYPE OF MONUMENT: 1" PIPE WITH PLASTIC CAP

STATE PLANE COORDINATES: N \_\_\_\_\_

E \_\_\_\_\_

ELEVATION — M.S.L. DATUM: \_\_\_\_\_

THETA ANGLE: \_\_\_\_\_

FIELD BOOK: 7-15-6 CRADDOCK PAGE \_\_\_\_\_

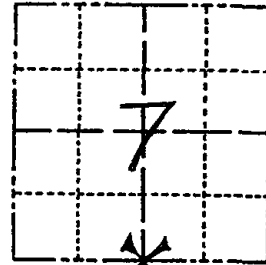
DRAWN BY: SMA

CORNER NO. 42

SECTION 7

TOWN T15N

RANGE R6E



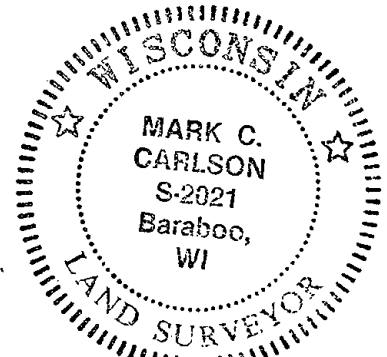
LOCATION  
(Indicated by 'X')

### BASIS FOR MONUMENT LOCATION

Show info such as: History of corner, with reference to Vol. and pg., dates, surveyor; exact description of monument replaced; if location computed, by taped or EDM traverse; landowner remarks, etc. (Use reverse side if necessary) (in conformance with Section A-E 502 of the Wisconsin Administrative Code)

Found 1" pipe with plastic cap but no record of this having been set. Fit Kiedrowski section summary very well and accepted as corner. Made ties.

SEAL:



DATA SHOWN HERE ON  
CERTIFIED CORRECT:

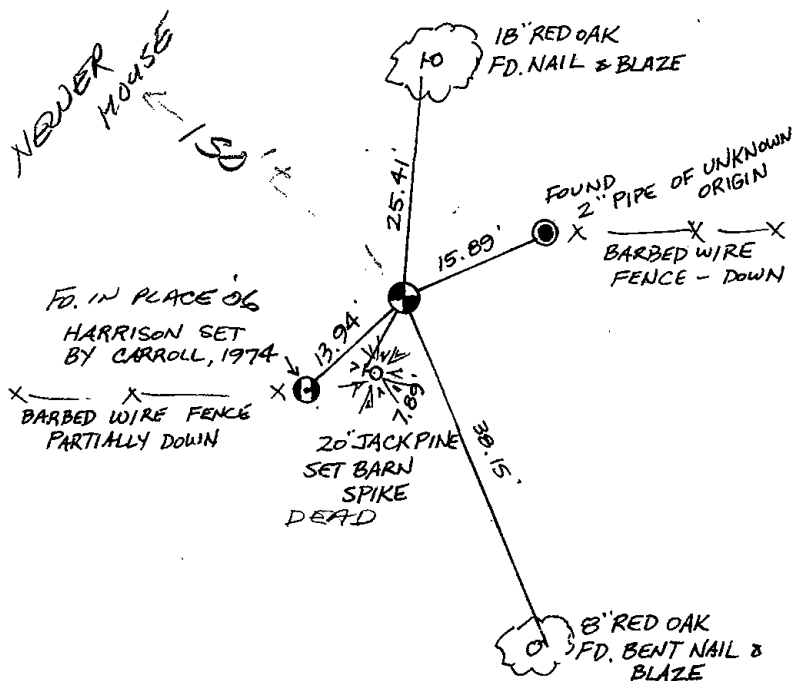
*Mark C Carlson*

Registered Land Surveyor

DATE: 5-19-97

### TIE SKETCH

Show at least four ties, also fence lines, roads, topo, size and type of witness trees and if off road - best way to arrive at corner.



### MAINTENANCE RECORD

Date	Init.	Remarks
2-12-01	JG-MH	OK
03-06-06	SS	OK
1-24-11	SS	"