

PUBLIC LAND SURVEY MONUMENT RECORD

TYPE OF MONUMENT: HARRISON
 ADAMS COUNTY COORDINATES, NAD 83 (2007)

N. 154037.037

E. 533917.867

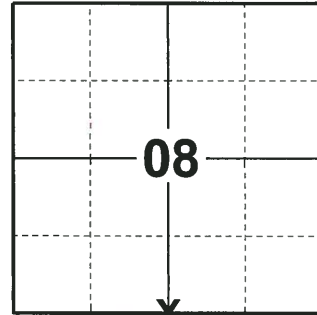
ELEVATION- - - DATUM - -

FIELD WORK DATE: 06/25/2018

BASIS FOR MONUMENT LOCATION

1980 - PLS 584 FOUND A 1-1/4" WELLPOINT FROM A SURVEY COMPLETED BY MID-STATE ASSOCIATES FOR THE LOTS TO THE SOUTH. SET A HARRISON MONUMENT AND TIED OUT AT THIS POINT SO THAT IT WOULD NOT UPSET THE SURVEY TO THE SOUTH, EVEN THOUGH IT WAS NOT SET HALFWAY BETWEEN THE SECTION CORNERS. THIS CORNER WAS SET 2640' WEST OF THE NE CORNER OF SECTION 17. (CORNER WOULD HAVE TO BE MOVED NORTHEAST 30± TO BE HALFWAY AND ON LINE.)

2018 - PLS 2994 FOUND A HARRISON MONUMENT 6" ABOVE THE GROUND SURFACE AND 1 TIE. THE MONUMENT AGREES WITH THE EXISTING TIE. ACCEPTED THE HARRISON MONUMENT AS THE CORNER LOCATION. SET 4 NEW TIES AND MEASURED TO THE TIES.



LOCATION
 (INDICATE CORNER BY "X")

SEAL:



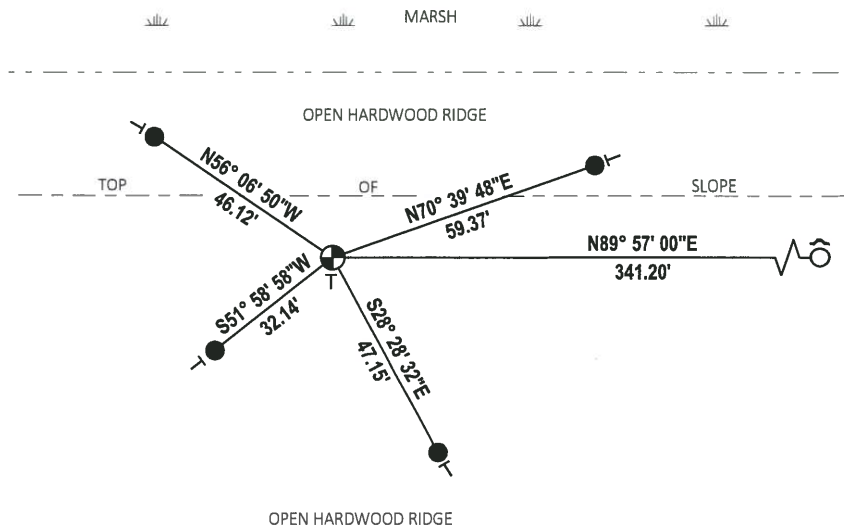
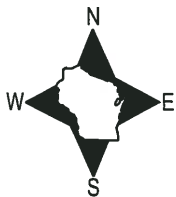
DATA SHOWN HERE ON THIS TIE SHEET IS CORRECT AND COMPLETE TO THE BEST OF MY KNOWLEDGE AND BELIEF.

PROFESSIONAL LAND SURVEYOR

DATE 8-10-18

- TIE SKETCH

NOTE: THE CORNER FALLS 75± SOUTH OF THE EDGE OF AN OPEN MARSH.

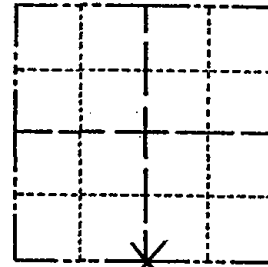


- SET 3/4" x 18" IRON REBAR, 1.50#/FT
- FOUND 3/4" IRON ROD
- ⊕ FOUND HARRISON MONUMENT
- ↘ STEEL FENCE POST
- VINYL "T" POST

Government Land Corner Certificate

ADAMS County
 TYPE OF MONUMENT: Harrison
 STATE PLANE COORDINATES: N _____
 E _____
 ELEVATION — M.S.L. DATUM: _____
 THETA ANGLE: _____
 FIELD BOOK: _____ PAGE 30
 DRAWN BY: R. NUBER

CORNER NO. 44
 SECTION 8
 TOWN 15
 RANGE 6



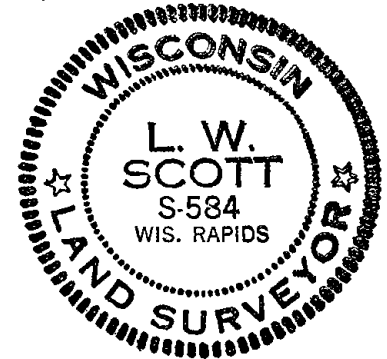
LOCATION
 (Indicated by 'X')

BASIS FOR MONUMENT LOCATION

Show info such as: History of corner, with reference to Vol. and pg., dates, surveyor; exact description of monument replaced; if location computed, by taped or EDM traverse; landowner remarks, etc. (Use reverse side if necessary)

Found $1\frac{1}{4}$ " wellpoint for a survey done by Mid-State Associates for lots to the South, so set a Harrison at point so as not to upset the survey to the South although it was not set halfway between the Section corners. This corner was set 2640' West of the NE corner of Section 17. (Corner would have to be moved Northeast some 30' more or less to be halfway and on line.)

SEAL:



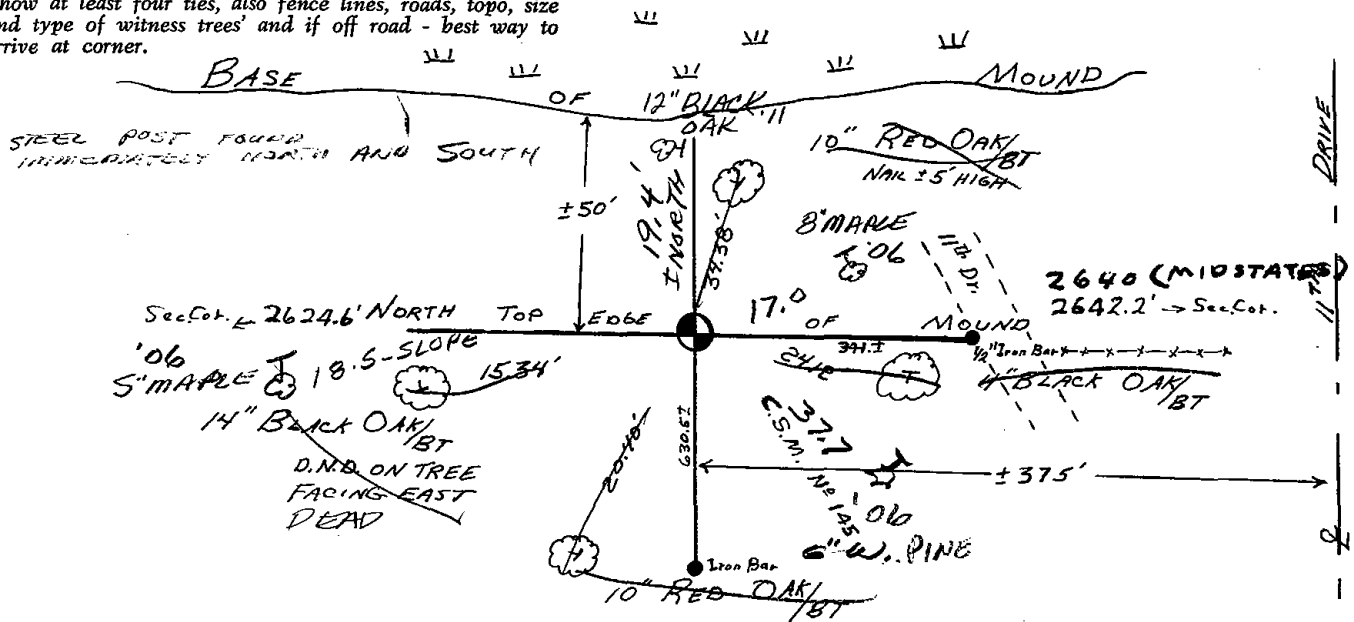
DATA SHOWN HERE ON
 CERTIFIED CORRECT:

L. W. Scott
 Registered Land Surveyor

DATE: 12/24/80

TIE SKETCH

Show at least four ties, also fence lines, roads, topo, size and type of witness trees' and if off road - best way to arrive at corner.



Government Land Corner Certificate

ADAMS County

CORNER NO. 44
 SECTION 8
 TOWN 15
 RANGE 6

TYPE OF MONUMENT: Harrison

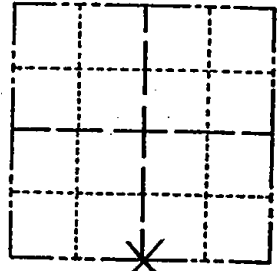
STATE PLANE COORDINATES: N _____
 E _____

ELEVATION — M.S.L. DATUM: _____

THETA ANGLE: _____

FIELD BOOK: _____ PAGE 30

DRAWN BY: R. NUBER

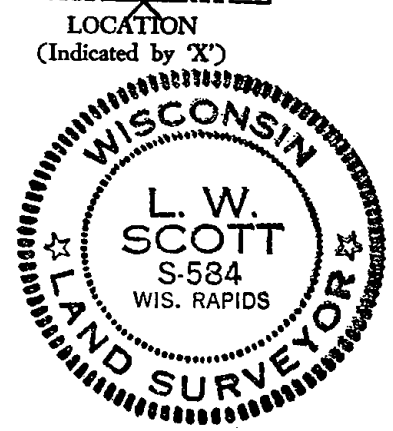


BASIS FOR MONUMENT LOCATION

Show info such as: History of corner, with reference to Vol. and pg., dates, surveyor; exact description of monument replaced; if location computed, by taped or EDM traverse; landowner remarks, etc. (Use reverse side if necessary)

Found $1\frac{1}{4}$ " wellpoint for a survey done by Mid-State Associates for lots to the South, so set a Harrison at point so as not to upset the survey to the South although it was not set halfway between the Section corners. This corner was set 2640' West of the NE corner of Section 17. (Corner would have to be moved Northeast some 30' more or less to be halfway and on line.)

SEAL:



DATA SHOWN HERE ON CERTIFIED CORRECT:

L. W. Scott
 Registered Land Surveyor

DATE: 12/22/80

TIES OK 1/13/97 *John H. Taylor*

TIE SKETCH

Show at least four ties, also fence lines, roads, topo, size and type of witness trees' and if off road - best way to arrive at corner.

