

## PUBLIC LAND SURVEY MONUMENT RECORD

TYPE OF MONUMENT: HARRISON  
 ADAMS COUNTY COORDINATES, NAD 83 (2007)

N. 154167.847

E. 552330.159

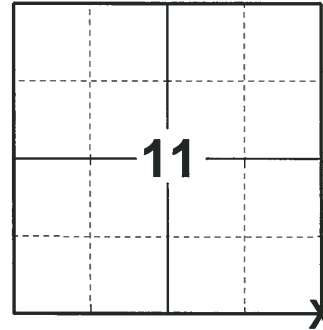
ELEVATION- - - - DATUM - - - -

FIELD WORK DATE: 06/25/2018

### BASIS FOR MONUMENT LOCATION

1973 - PLS 878 FOUND A 1-1/4"x30" IRON PIPE AND ACCEPTED IT AS THE CORRECT POSITION AFTER TRAVERSING THE ENTIRE SECTION. REPLACED THE PIPE WITH A HARRISON MONUMENT AND TIED OUT.

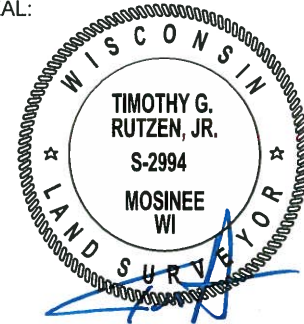
2018 - PLS 2994 FOUND A HARRISON MONUMENT 4" ABOVE THE GROUND SURFACE. FOUND NO EVIDENCE OF ANY OF THE TIES OR WITNESSES. ACCEPTED THE HARRISON MONUMENT AS THE BEST EVIDENCE OF THE CORNER LOCATION. SET 4 NEW TIES AND MEASURED TO THE TIES.



LOCATION

(INDICATE CORNER BY "X")

SEAL:



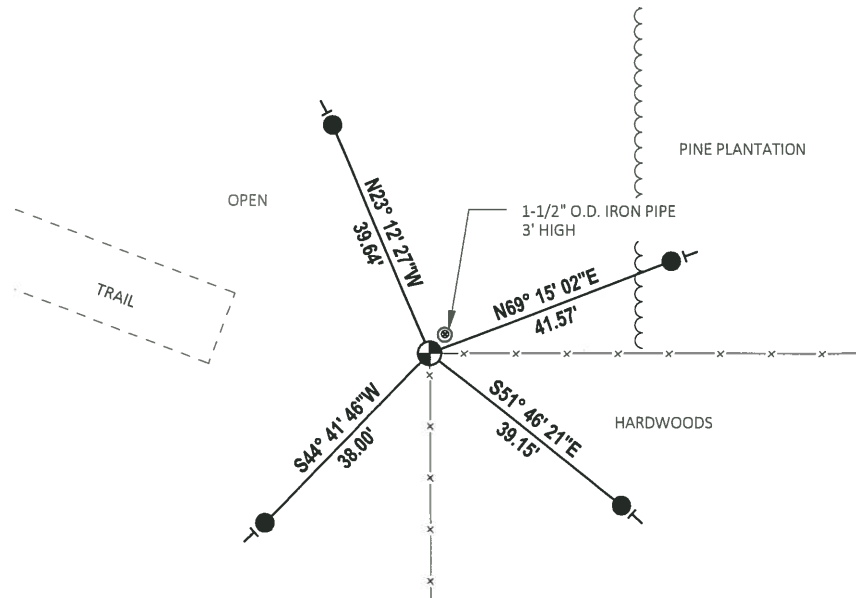
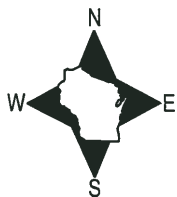
DATA SHOWN HERE ON THIS TIE SHEET IS CORRECT AND COMPLETE TO THE BEST OF MY KNOWLEDGE AND BELIEF.

PROFESSIONAL LAND SURVEYOR

DATE 7-18-18

### - TIE SKETCH

NOTE: THE CORNER FALLS 150'± EAST OF TOWN RD.



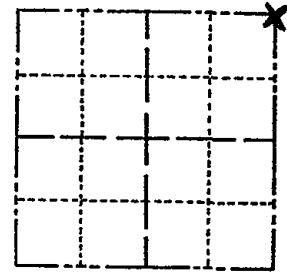
- SET 3/4" x 18" IRON REBAR, 1.50#/FT
- ⊕ FOUND HARRISON MONUMENT
- VINYL "T" POST

# ADAMS COUNTY

## Survey Monument Record

TYPE OF MONUMENT: 30" HARRISON  
 STATE PLANE COORDINATES: N \_\_\_\_\_  
 E \_\_\_\_\_  
 ELEVATION — M.S.L. DATUM: \_\_\_\_\_  
 THETA ANGLE: \_\_\_\_\_  
 FIELD BOOK: 108 PAGE 95

CORNER NO. 308  
 SECTION 14  
 TOWN 15  
 RANGE 6



LOCATION  
(Indicated by 'X')

SEAL:

### BASIS FOR MONUMENT LOCATION

(Use reverse side if necessary)

Show info such as: History of corner, with reference to Vol. and pg. dates, surveyor; exact description of monument replaced; if location computed, by taped or EDM traverse; landowner remarks, etc.

Found  $1\frac{1}{4}$ " x 30" iron pipe and accepted as being correct in position after traversing entire section.  
 Replaced pipe with Harrison monument.

CORNER O.K. 4-23-76 RN-SS

### MAINTENANCE RECORD

Date	Init.	Remarks
12-30-81	SK-RN	Corner O.K.
1-21-86	GR-SS	OK
2-14-91	JG	ALL OK
11-22-95	SS	OK
1-29-01	JG-MH	OK
4-27-06	JG-EW	2-NEW TIES
01-13-11	SS	OK



CERTIFIED CORRECT:

*Anthony B. Kiedrowski*  
 Registered Land Surveyor

DATE: 9-18-73

### TIE SKETCH

(Show at least four ties)

