

U.S. PUBLIC LAND SURVEY MONUMENT RECORD

ADAMS COUNTY

This record shall show the location of the corner and shall include all of the following nine elements (a through i)

TYPE OF MONUMENT: BERNTSEN SURVEY MARKER NAIL

ADAMS COUNTY COORDINATES: N: 148755.853

E: 531300.029

ELEVATION: -M.S.L. DATUM _____

ELLIP. HEIGHT: _____

LATITUDE: _____

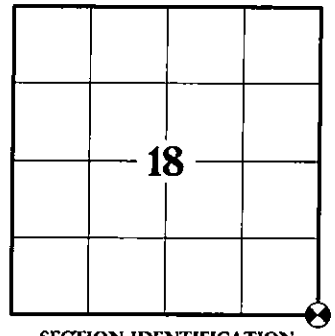
LONGITUDE: _____

- FOUND
- SET
- RE-SET
- RE-TIED

ORDER OF ACCURACY: _____
 FIRST _____
 SECOND _____
 THIRD X
 FOURTH _____
 UNKNOWN _____
 OTHER _____
 REFERENCE DATUM: NAD 83 (2011)

(a) Identify the corner by reference to the U.S. public land survey system.

CORNER NO. 63
 ROMPORTOL ID: 41506180000
 SECTION 18
 TOWNSHIP 15 NORTH
 RANGE 06 EAST



SECTION IDENTIFICATION

(b) Describe any record evidence, monument evidence, occupational evidence, testimonial evidence, or any other material evidence considered by the professional land surveyor, and whether the monument was found or placed

DALE C. HAGEN, PLS 1103 SET HARRISON MONUMENT AFTER AN ANALYSIS OF FIELD INFORMATION AND THE ORIGINAL FIELD NOTES. PER PREVIOUS TIE SHEET DATED MARCH 19, 1975.

ERNEST WOORSTER, PLS 1741 LOCATED AND TIED PRIOR TO RECONSTRUCTION OF THE HIGHWAY. NEW TIES PROVIDED. TIES ARE AL. DISC SET IN CONCRETE. DISC STATES WISCONSIN DEPARTMENT OF TRANSPORTATION DO NOT DISTURB. NEW MONUMENT SET. PER PREVIOUS TIE SHEET DATED NOVEMBER 15, 2001.

TIMOTHY G. RUTZEN, JR., PLS 2994 FOUND A HARRISON MONUMENT 6" BELOW THE ROAD SURFACE, 4 TIES AND 1 PROPERTY IRON. THE MONUMENT AGREES WITH THE EXISTING TIES. ACCEPTED THE HARRISON MONUMENT AS THE CORNER LOCATION AND MEASURED TO THE EXISTING TIES AND PROPERTY IRON. PER PREVIOUS TIE SHEET DATED AUGUST 10, 2018.

ON APRIL 6, 2021, I FOUND A HARRISON MONUMENT AT THE CORNER LOCATION AND FOUR EXISTING WITNESS MONUMENTS AS SHOWN ON PREVIOUS TIE SHEET DATED AUGUST 10, 2018. EXISTING MONUMENT CHECKED WELL WITH WITNESS MONUMENTS AND WAS ACCEPTED AS THE CORNER LOCATION. MONUMENT AND WITNESSES WERE TIED BEFORE RECONSTRUCTION OF STATE HWY "82".

ON OCTOBER 28, 2021, AFTER CONSTRUCTION WAS COMPLETE, I SET A BERNTSEN SURVEY NAIL IN CONCRETE AT THE PREVIOUS SURVEYED LOCATION AND VERIFIED ALL WITNESS MONUMENTS AS PREVIOUSLY FOUND, WHICH WERE IN GOOD CONDITION.

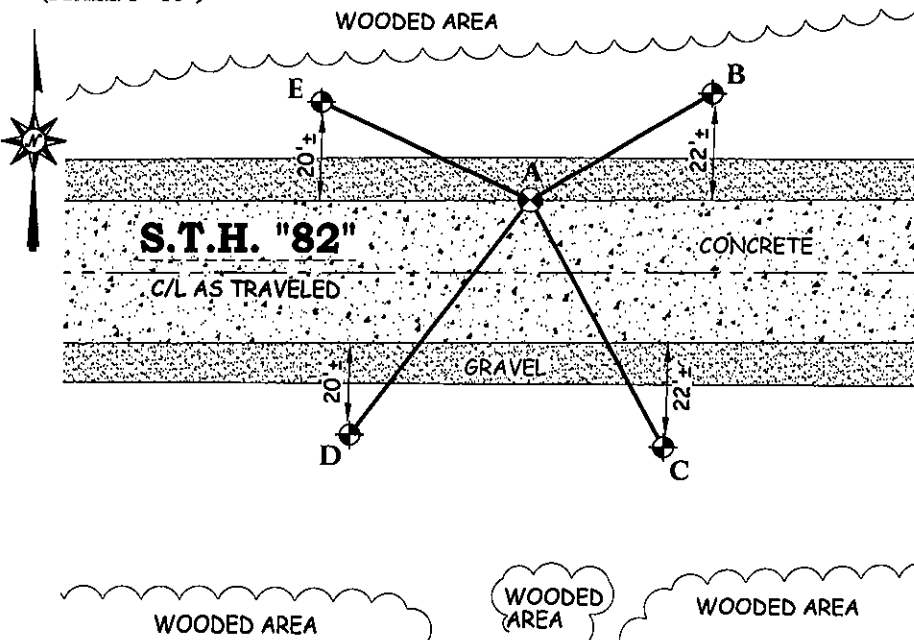
(c) In the plan view drawing below, provide reference ties to at least 4 witness monuments. Witness monuments shall be concrete, natural stone, iron, bearing trees or other equally durable material, except wood other than bearing trees.

(d) Show a plan view drawing depicting the relevant monuments and reference ties which is sufficient in detail to enable accurate relocation of the corner monument if the corner monument is disturbed.

DRAFTED BY JORDAN G. BROST
 DRAWN BY TRAVIS PLANTICO

TIE SKETCH:

(SCALE: 1"=40')



LEGEND AND NOTES:

- SET BERNTSEN SURVEY MARKER NAIL
- DOT ALUMINUM CAP MONUMENT IN CONCRETE FOUND

A-B	(N 59°38'12" E)	(43.82')
	N 59°26'05"E	43.85'
A-C	(S 28°36'52" E)	(58.75')
	S 28°37'34"E	58.78'
A-D	(S 37°04'40" W)	(61.66')
	S 37°00'10"W	61.70'
A-E	(N 65°07'32" W)	(48.02')
	N 65°06'28"W	48.07'

COORDINATES ARE REFERENCED TO THE ADAMS COUNTY COORDINATE SYSTEM AS DEVELOPED BY THE WISCONSIN DEPARTMENT OF TRANSPORTATION.

U.S. PUBLIC LAND SURVEY MONUMENT RECORD

ADAMS COUNTY



Point of Beginning

Land Surveying
Landscape Architecture
Engineering
Jordan G. Brost, PLS #3009
4941 Kirschling Court
Stevens Point, WI 54481
715.344.9999(PH) 715.344.9922(FX)

(e) A description of any material discrepancy between the location of the corner monument as restored and the monument location of that corner as previously established.

(a) Identify the corner by reference to the U.S. public land survey system.

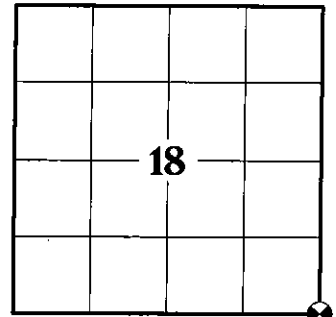
CORNER NO. 63
ROMPORTOL ID: 41506180000
SECTION 18
TOWNSHIP 15 NORTH
RANGE 06 EAST

(f) Was the corner restored through acceptance of (1) an obliterated evidence location, or (2) a found perpetuated location.

FOUND PERPETUATED LOCATION

(g & h) Was the corner reestablished through lost corner proportionate methods? If so, show the method, including the directions and distances to other public land survey corners used as evidence or used for proportioning in determining the corner location.

NO



SECTION IDENTIFICATION

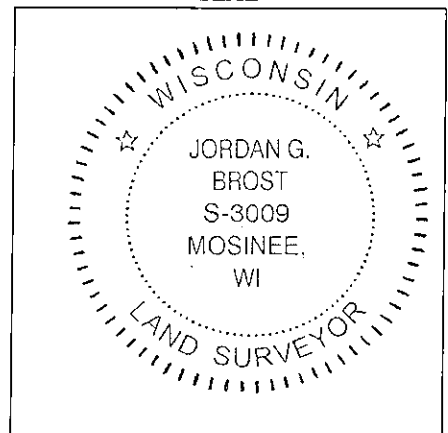
(i) I, Jordan G. Brost, hereby certify that the corner location shown on this record was determined by me or under my direction and control and that this U.S. Public Land Survey Monument Record is correct and complete to the best of my knowledge and belief.

Jordan G. Brost, PLS # 3009

11/24/2021

Date

SEAL



PUBLIC LAND SURVEY MONUMENT RECORD

TYPE OF MONUMENT: HARRISON
 ADAMS COUNTY COORDINATES, NAD 83 (2007)

N. 148755.776

E. 531300.004

ELEVATION- DATUM

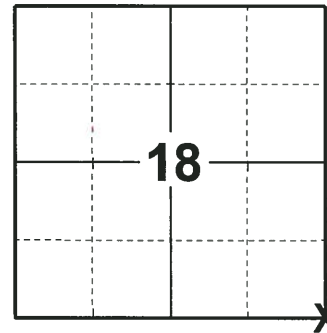
FIELD WORK DATE: 07/02/2018

BASIS FOR MONUMENT LOCATION

1975 - PLS 1103 RAN EDM/TRANSIT TRAVERSE AROUND SECTIONS 20 AND 29. FOUND NO EVIDENCE OF THE ORIGINAL CORNER OR ANY SUBSEQUENT REMONUMENTATION. CALCULATED THE CORNER POSITION AFTER ANALYSIS OF THE FIELD INFORMATION AND THE ORIGINAL FIELD NOTES. SET A HARRISON MONUMENT AND TIED OUT.

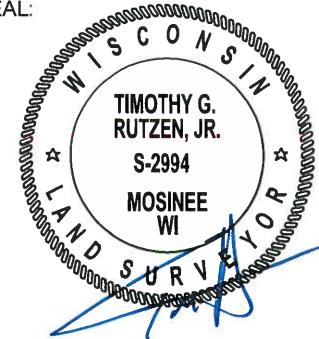
2001 - PLS 1741 MONUMENT WAS LOCATED AND TIED PRIOR TO RECONSTRUCTION OF THE HIGHWAY. NEW TIES PROVIDED. TIES ARE ALUMINUM DISC SET IN CONCRETE. DISC STATES WISCONSIN DEPARTMENT OF TRANSPORTATION DO NOT DISTURB. SET A HARRISON MONUMENT AT THE CORNER LOCATION.

2018 - PLS 2994 FOUND A HARRISON MONUMENT 6" BELOW THE SURFACE, 4 TIES AND 1 PROPERTY IRON. THE MONUMENT AGREES WITH THE EXISTING TIES. ACCEPTED THE HARRISON MONUMENT AS THE CORNER LOCATION AND MEASURED TO THE EXISTING TIES AND PROPERTY IRON.



LOCATION
 (INDICATE CORNER BY "X")

SEAL:



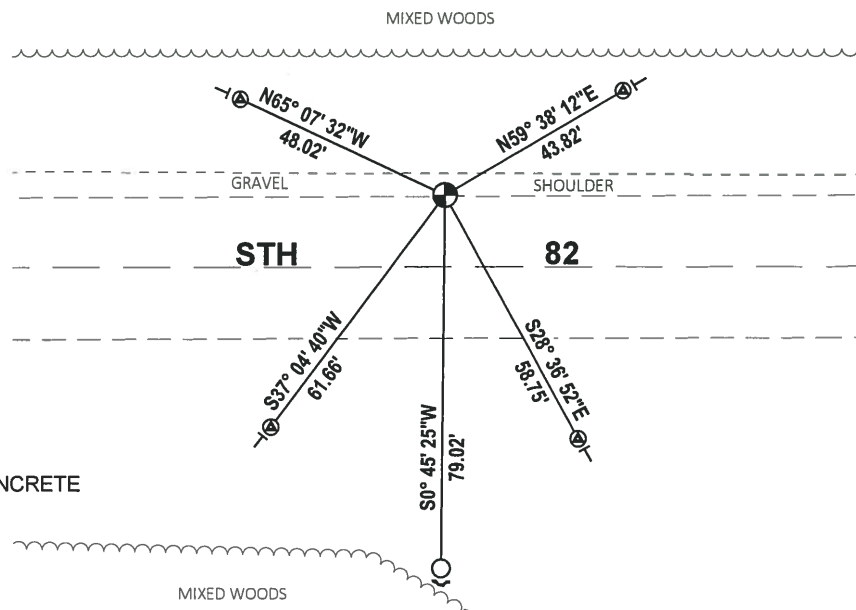
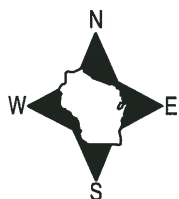
DATA SHOWN HERE ON THIS TIE SHEET IS CORRECT AND COMPLETE TO THE BEST OF MY KNOWLEDGE AND BELIEF.

PROFESSIONAL LAND SURVEYOR

DATE 8-10-18

- TIE SKETCH

NOTE: THE CORNER FALLS 15'± NORTH OF THE CENTERLINE OF STH 82.

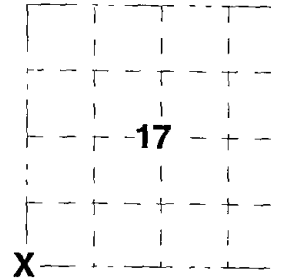


- FOUND 3/4" IRON ROD
- ⊙ FOUND WISDOT ALUMINUM CAP IN CONCRETE
- ⊕ FOUND HARRISON MONUMENT
- ┌ STEEL FENCE POST
- └ VINYL "T" POST

Government Land Corner Certificate

ADAMS County
 TYPE OF MONUMENT HARRISON
 STATE PLANE COORDINATES: N. _____
 E. _____
 ELEVATION _____ M.S.L. DATUM: _____
 THETA ANGLE: _____
 FIELD BOOK: _____ PAGE: _____
 DRAWN BY: _____ E.W.

CORNER NO. 63
 SECTION 17
 TOWN T15N
 RANGE R6E



BASIS FOR MONUMENT LOCATION

Show info such as; History of corner, with reference to Vol. and pg., dates, surveyor, exact description of monument replaced; if location computed by taped or EDM traverse; landowner remarks, etc. (use reverse side if necessary).

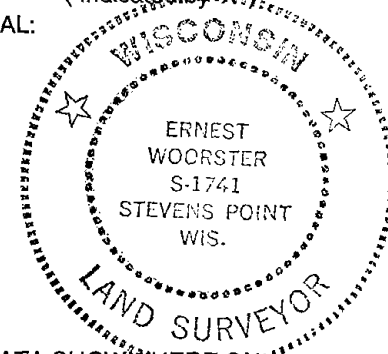
MONUMENT LOCATED AND TIED PRIOR TO RECONSTRUCTION OF THE HIGHWAY. NEW TIES PROVIDED. TIES ARE AL. DISC SET IN CONCRETE. DISC STATES WISCONSIN DEPARTMENT OF TRANSPORTATION DO NOT DISTURB. NEW MONUMENT SET.

*ALL OK - 4-27-06 - JG-EW
 1-14-11 SS*

LOCATION

(Indicated by 'X')

SEAL:



DATA SHOWN HERE ON CERTIFIED CORRECT:

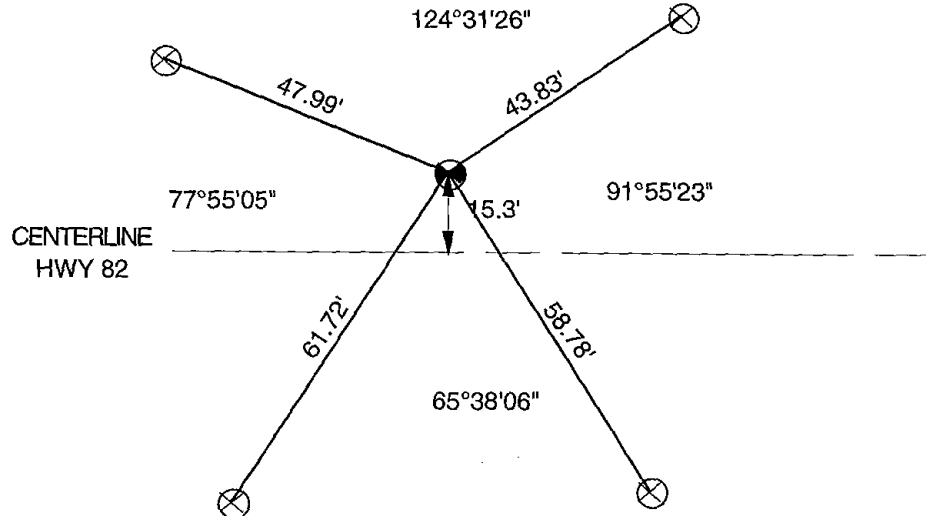
[Handwritten signature]

Registered Land Surveyor

DATE 15 Nov 01

TIE SKETCH

Show at least four ties; also fence lines, roads, topo, size and type of witness trees' and if off road- best way to arrive at corner.

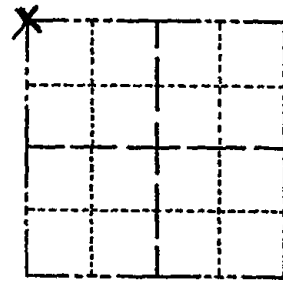


ADAMS COUNTY

Survey Monument Record

TYPE OF MONUMENT: Standard Harrison
STATE PLANE COORDINATES: N _____
E _____
ELEVATION — M.S.L. DATUM: _____
THETA ANGLE: _____
FIELD BOOK: _____ PAGE _____

CORNER NO. 643
SECTION 20
TOWN 15
RANGE 6



LOCATION
(Indicated by 'X')

SEAL:

BASIS FOR MONUMENT LOCATION

(Use reverse side if necessary)

Show info such as: History of corner, with reference to Vol. and pg, dates, surveyor; exact description of monument replaced; if location computed, by taped or EDM traverse; landowner remarks, etc.

Ran EDM/transit traverse around Sections 20 and 29. Could find no evidence of the original corner or any subsequent remonumentation.

Set corner after an analysis of the field information and the original field notes.



CORNER O.K. 9-25-76 RN-55
OK 1-21-86 GR-55
3 NEW TIES 3-15-91 JG-55
OK 2-7-96 CR-16
OK 2-1-01 SG-MH

CERTIFIED CORRECT:
Dale C. Hagen
Registered Land Surveyor
DATE: March 19, 1975

TIE SKETCH

SEE TIE SHEET WOODSTER 15 NOV, 01
HARRISON 14" DEEP

(Show at least four ties)

NOTE: Ties in trees to nail in disc.
Bearing trees marked BT are blazed and scribed with BT facing corner.

