

# U.S. PUBLIC LAND SURVEY MONUMENT RECORD

## ADAMS COUNTY



Land Surveying  
 Landscape Architecture  
 Engineering  
**Jordan G. Brost, PLS #3009**  
 4941 Kirschling Court  
 Stevens Point, WI 54481  
 715.344.9999 (Ph) 715.344.9922 (Fax)

This record shall show the location of the corner and shall include all of the following nine elements (a through i)

TYPE OF MONUMENT: BERNTSEN SURVEY MARKER NAIL

ADAMS COUNTY COORDINATES: N: 148760.096  
 E: 533935.221

ELEVATION: -M.S.L. DATUM

ELLIP. HEIGHT: \_\_\_\_\_

LATITUDE: \_\_\_\_\_

LONGITUDE: \_\_\_\_\_

- FOUND
- SET
- RE-SET
- RE-TIED

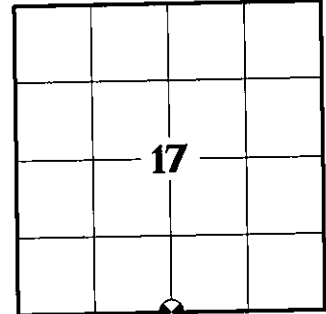
ORDER OF ACCURACY:

- FIRST \_\_\_\_\_
- SECOND \_\_\_\_\_
- THIRD X
- FOURTH \_\_\_\_\_
- UNKNOWN \_\_\_\_\_
- OTHER \_\_\_\_\_

REFERENCE DATUM: NAD 83 (2011)

(a) Identify the corner by reference to the U.S. public land survey system.

CORNER NO. 64  
 ROMPORTOL ID: 41506170020  
 SECTION 17  
 TOWNSHIP 15 NORTH  
 RANGE 06 EAST



SECTION IDENTIFICATION

(b) Describe any record evidence, monument evidence, occupational evidence, testimonial evidence, or any other material evidence considered by the professional land surveyor, and whether the monument was found or placed

DALE C. HAGEN, PLS 1103 SET HARRISON MONUMENT EQUIDISTANT AND ON LINE BETWEEN ADJACENT SECTION CORNERS. PER PREVIOUS TIE SHEET DATED MARCH 19, 1975.

ERNEST WOORSTER, PLS 1741 LOCATED AND TIED PRIOR TO RECONSTRUCTION OF THE HIGHWAY. NEW TIES PROVIDED. TIES ARE AL. DISC SET IN CONCRETE. DISC STATES WISCONSIN DEPARTMENT OF TRANSPORTATION DO NOT DISTURB. NEW MONUMENT SET. PER PREVIOUS TIE SHEET DATED NOVEMBER 15, 2001.

TIMOTHY G. RUTZEN, JR., PLS 2994 FOUND A HARRISON MONUMENT 6" BELOW THE ROAD SURFACE AND 3 TIES. THE MONUMENT AGREES WITH THE EXISTING TIES. ACCEPTED THE HARRISON MONUMENT AS THE CORNER LOCATION. SET 1 NEW TIE AND MEASURED TO THE TIES. PER PREVIOUS TIE SHEET DATED AUGUST 10, 2018.

ON APRIL 6, 2021, I FOUND A HARRISON MONUMENT AT THE CORNER LOCATION AND FOUR EXISTING WITNESS MONUMENTS AS SHOWN ON PREVIOUS TIE SHEET DATED AUGUST 10, 2018. EXISTING MONUMENT CHECKED WELL WITH WITNESS MONUMENTS AND WAS ACCEPTED AS THE CORNER LOCATION. MONUMENT AND WITNESSES WERE TIED BEFORE RECONSTRUCTION OF STATE HWY "82".

ON OCTOBER 28, 2021, AFTER CONSTRUCTION WAS COMPLETE, I SET A BERNTSEN SURVEY NAIL IN CONCRETE AT THE PREVIOUS SURVEYED LOCATION AND VERIFIED ALL WITNESS MONUMENTS AS PREVIOUSLY FOUND, WHICH WERE IN GOOD CONDITION.

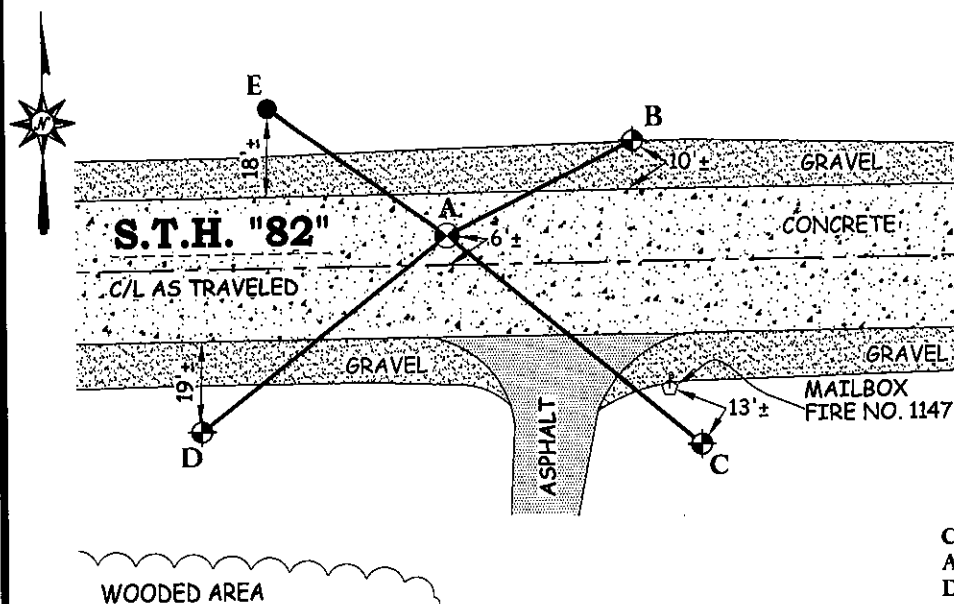
(c) In the plan view drawing below, provide reference ties to at least 4 witness monuments. Witness monuments shall be concrete, natural stone, iron, bearing trees or other equally durable material, except wood other than bearing trees.

(d) Show a plan view drawing depicting the relevant monuments and reference ties which is sufficient in detail to enable accurate relocation of the corner monument if the corner monument is disturbed.

**DRAFTED BY JORDAN G. BROST**  
**DRAWN BY TRAVIS PLANTICO**

### TIE SKETCH:

(SCALE: 1"=40')



### LEGEND AND NOTES:

- SET BERNTSEN SURVEY MARKER NAIL
- DOT ALUMINUM CAP MONUMENT IN CONCRETE FOUND
- 3/4" IRON BAR FOUND
- MAILBOX

A-B	(N 63°30'42" E)	(43.42')
	N 63°30'38" E	43.38'
A-C	(S 49°58'42" E)	(68.92')
	S 49°56'05" E	68.91'
A-D	(S 51°45'17" W)	(65.25')
	S 51°44'52" W	65.33'
A-E	(N 53°54'47" W)	
	N 53°56'09" W	45.91'

COORDINATES ARE REFERENCED TO THE ADAMS COUNTY COORDINATE SYSTEM AS DEVELOPED BY THE WISCONSIN DEPARTMENT OF TRANSPORTATION.

**U.S. PUBLIC LAND SURVEY MONUMENT RECORD**  
**ADAMS COUNTY**



Land Surveying  
Landscape Architecture  
Engineering  
Jordan G. Brost, PLS #3009  
4941 Kirschling Court  
Stevens Point, WI 54481  
715.344.9999(Ph) 715.344.9922(Fx)

(e) A description of any material discrepancy between the location of the corner monument as restored and the monument location of that corner as previously established.

(a) Identify the corner by reference to the U.S. public land survey system.

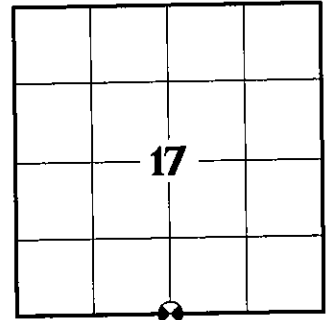
CORNER NO. 64  
ROMPORTOL ID: 41506170020  
SECTION 17  
TOWNSHIP 15 NORTH  
RANGE 06 EAST

(f) Was the corner restored through acceptance of (1) an obliterated evidence location, or (2) a found perpetuated location.

**FOUND PERPETUATED LOCATION**

(g & h) Was the corner reestablished through lost corner proportionate methods? If so, show the method, including the directions and distances to other public land survey corners used as evidence or used for proportioning in determining the corner location.

NO



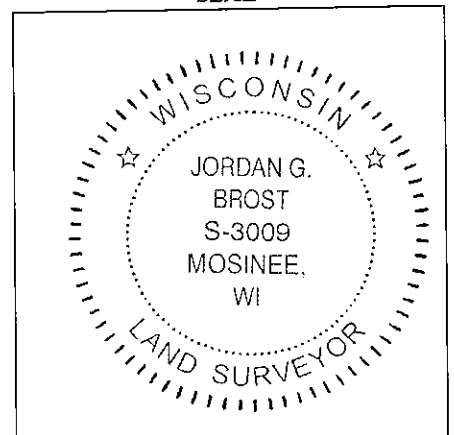
SECTION IDENTIFICATION

(i) I, Jordan G. Brost, hereby certify that the corner location shown on this record was determined by me or under my direction and control and that this U.S. Public Land Survey Monument Record is correct and complete to the best of my knowledge and belief.

Jordan G. Brost, PLS # 3009

11/24/2021  
Date

SEAL



17  
SECTION

15  
TOWN

06  
RANGE

# ADAMS COUNTY

COUNTY CORNER NO.: 64

ROMPORTOL ID: 41506170020

## PUBLIC LAND SURVEY MONUMENT RECORD

TYPE OF MONUMENT: HARRISON  
ADAMS COUNTY COORDINATES, NAD 83 (2007)

N. 148760.112

E. 533935.132

ELEVATION-      DATUM     

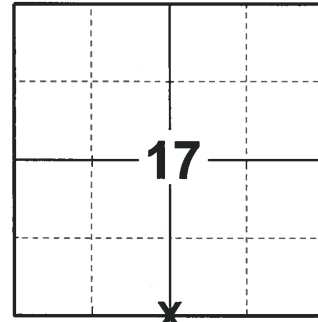
FIELD WORK DATE: 07/02/2018

### BASIS FOR MONUMENT LOCATION

1975 - PLS 1103 RAN EDM-TRANSIT TRAVERSE OF SECTIONS 20 AND 29, PICKING UP ALL EXISTING FIELD EVIDENCE. CALCULATED THE SECTION CORNER POSITION EQUIDISTANT ON LINE BETWEEN ADJACENT SECTION CORNERS. AFTER THOROUGH ANALYSIS OF THE FIELD INFORMATION AND THE ORIGINAL FIELD NOTES. SET A HARRISON MONUMENT AT THE CALCULATED POSITION AND TIED OUT.

2001 - PLS 1741 MONUMENT LOCATED AND TIED PRIOR TO RECONSTRUCTION OF THE HIGHWAY. NEW TIES PROVIDED. TIES ARE ALUMINUM DISC SET IN CONCRETE. DISC STATES WISCONSIN DEPARTMENT OF TRANSPORTATION DO NOT DISTURB. SET A HARRISON MONUMENT AT THE CORNER LOCATION AND TIED OUT.

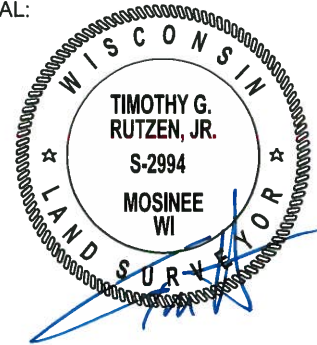
2018 - PLS 2994 FOUND A HARRISON MONUMENT 6" BELOW THE ROAD SURFACE AND 3 TIES. THE MONUMENT AGREES WITH THE EXISTING TIES. ACCEPTED THE HARRISON MONUMENT AS THE CORNER LOCATION. SET 1 NEW TIE AND MEASURED TO THE TIES.



LOCATION

(INDICATE CORNER BY "X")

SEAL:



DATA SHOWN HERE ON THIS TIE SHEET IS CORRECT AND COMPLETE TO THE BEST OF MY KNOWLEDGE AND BELIEF.

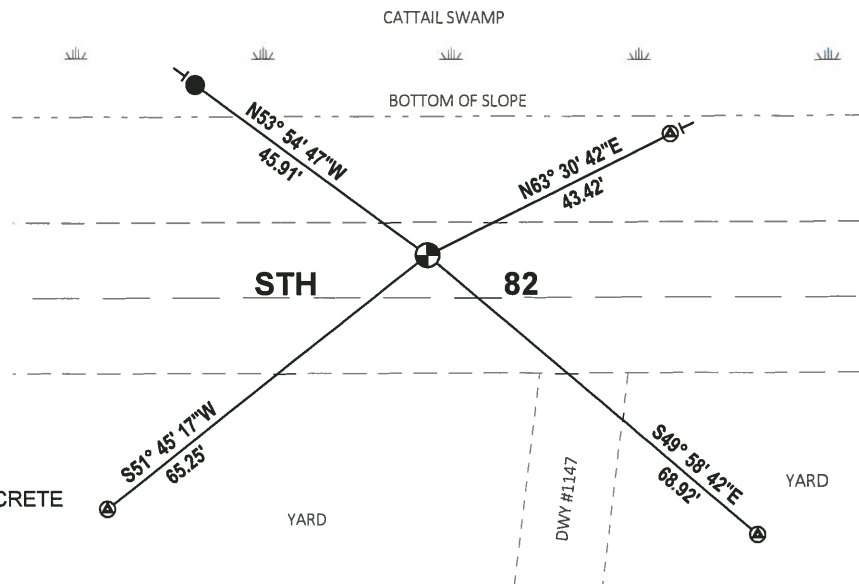
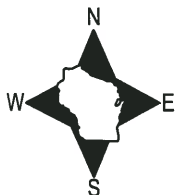
PROFESSIONAL LAND SURVEYOR

DATE 8-10-18

### TIE SKETCH

NOTE 1: THE CORNER FALLS 7± NORTH OF THE CENTERLINE OF STH 82.

NOTE 2: THE CORNER IS LOCATED IN A 12" MANHOLE.

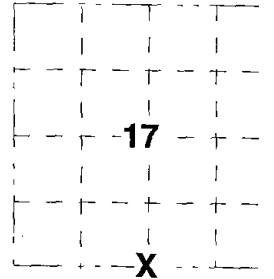


- SET 3/4" x 18" IRON REBAR, 1.50#/FT
- ⊙ FOUND WISDOT ALUMINUM CAP IN CONCRETE
- ⊙ FOUND HARRISON MONUMENT
- VINYL "T" POST

**Government Land Corner Certificate**

ADAMS County  
 TYPE OF MONUMENT HARRISON  
 STATE PLANE COORDINATES: N. \_\_\_\_\_  
 E. \_\_\_\_\_  
 ELEVATION \_\_\_\_\_ M.S.L. DATUM: \_\_\_\_\_  
 THETA ANGLE: \_\_\_\_\_  
 FIELD BOOK: \_\_\_\_\_ PAGE: \_\_\_\_\_  
 DRAWN BY: E.W.

CORNER NO. 64  
 SECTION 17  
 TOWN T15N  
 RANGE R6E



**BASIS FOR MONUMENT LOCATION**

Show info such as; History of corner, with reference to Vol. and pg., dates, surveyor, exact description of monument replaced; if location computed by taped or EDM traverse; landowner remarks, etc. (use reverse side if necessary).

REPLACED IRON ROD SET BY ADAMS COUNTY SURVEYOR

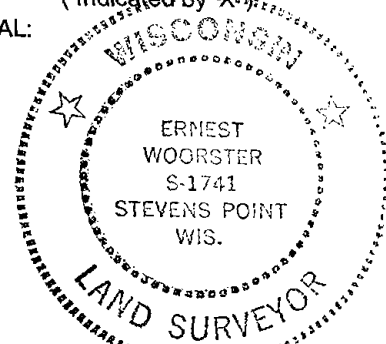
MONUMENT LOCATED AND TIED PRIOR TO RECONSTRUCTION OF THE HIGHWAY. NEW TIES PROVIDED. TIES ARE AL. DISC SET IN CONCRETE. DISC STATES WISCONSIN DEPARTMENT OF TRANSPORTATION DO NOT DISTURB. NEW MONUMENT SET.

*ALL OK - 4-27-06 - JG-EW  
 OK - 1-10-11 GR-SS*

**LOCATION**

(Indicated by 'X')

SEAL:



DATA SHOWN HERE ON CERTIFIED CORRECT:

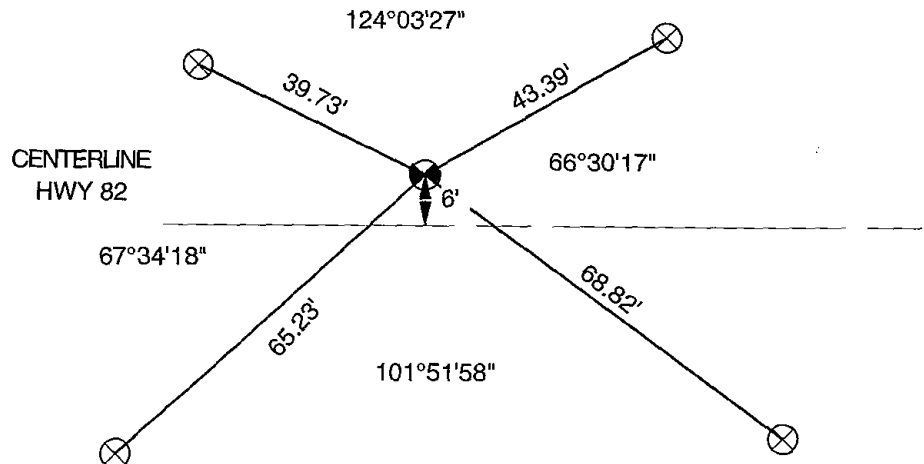
*[Handwritten Signature]*

Registered Land Surveyor

DATE 15 Nov 01

**TIE SKETCH**

Show at least four ties; also fence lines, roads, topo, size and type of witness trees and if off road- best way to arrive at corner.



ADAMS COUNTY

Survey Monument Record

TYPE OF MONUMENT: Harrison Monument

STATE PLANE COORDINATES: N \_\_\_\_\_

E \_\_\_\_\_

ELEVATION — M.S.L. DATUM: \_\_\_\_\_

THETA ANGLE: \_\_\_\_\_

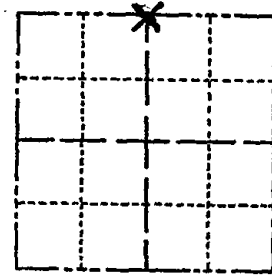
FIELD BOOK: \_\_\_\_\_ PAGE \_\_\_\_\_

CORNER NO. 644 <sup>(64)</sup>

SECTION 20

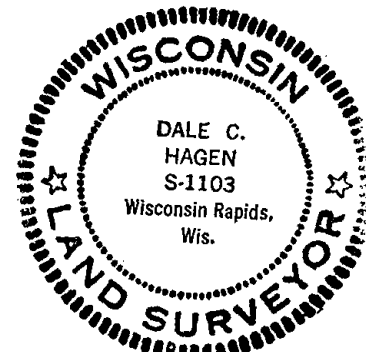
TOWN 15

RANGE 6



LOCATION  
(Indicated by 'X')

SEAL:



CERTIFIED CORRECT

*Dale C. Hagen*  
Registered Land Surveyor

DATE: March 19, 1975

BASIS FOR MONUMENT LOCATION

(Use reverse side if necessary)

Show info such as: History of corner, with reference to Vol. and pg, dates, surveyor; exact description of monument replaced; if location computed, by taped or EDM traverse; landowner remarks, etc.

Ran EDM-Transit traverse of Sections 20 and 29, picking up all existing field evidence.

Set Section corner after thorough analysis of the field information and the original field notes.

Set corner equidistant and on line between adjacent Section corners.

SEE THE SHEET WOODSTER 15 NOV. 01

TIE SKETCH

(Show at least four ties)

NOTE: Ties in trees to nail in disc. Bearing trees marked BT are blazed and scribed with 'BT' facing corner.

