

# U.S. PUBLIC LAND SURVEY MONUMENT RECORD

## ADAMS COUNTY



Land Surveying  
Landscape Architecture  
Engineering  
Jordan G. Brost, PLS #3009  
4941 Kirschling Court  
Stevens Point, WI 54481  
715.344.9999 (PH) 715.344.9922 (FX)

This record shall show the location of the corner and shall include all of the following nine elements (a through i)

TYPE OF MONUMENT: BERNTSEN SURVEY MARKER NAIL

ADAMS COUNTY COORDINATES: N: 148744.936

E: 539185.385

ELEVATION: -M.S.L. DATUM \_\_\_\_\_

ELLIP. HEIGHT: \_\_\_\_\_

LATITUDE: \_\_\_\_\_

LONGITUDE: \_\_\_\_\_

- FOUND
- SET
- RE-SET
- RE-TIED

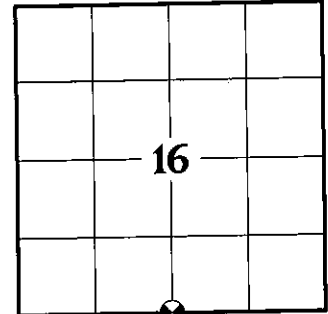
ORDER OF ACCURACY:

- FIRST \_\_\_\_\_
- SECOND \_\_\_\_\_
- THIRD X
- FOURTH \_\_\_\_\_
- UNKNOWN \_\_\_\_\_
- OTHER \_\_\_\_\_

REFERENCE DATUM: NAD 83 (2011)

(a) Identify the corner by reference to the U.S. public land survey system.

CORNER NO. 66  
ROMPORTOL ID: 41506160020  
SECTION 16  
TOWNSHIP 15 NORTH  
RANGE 06 EAST



SECTION IDENTIFICATION

(b) Describe any record evidence, monument evidence, occupational evidence, testimonial evidence, or any other material evidence considered by the professional land surveyor, and whether the monument was found or placed

DALE C. HAGEN, PLS 1103 SET HARRISON MONUMENT HALF WAY AND ON LINE BETWEEN ADJACENT SECTION CORNERS. PER PREVIOUS TIE SHEET DATED SEPTEMBER 20, 1976.

ERNEST WOORSTER, PLS 1741 LOCATED AND TIED PRIOR TO RECONSTRUCTION OF THE HIGHWAY. NEW TIES PROVIDED. TIES ARE AL. DISC SET IN CONCRETE. DISC STATES WISCONSIN DEPARTMENT OF TRANSPORTATION DO NOT DISTURB. PER PREVIOUS TIE SHEET DATED NOVEMBER 15, 2001.

TIMOTHY G. RUTZEN, JR., PLS 2994 FOUND A SURVEY NAIL IN THE ROAD SURFACE AND 4 TIES. THE MONUMENT AGREES WITH THE EXISTING TIES. ACCEPTED THE SURVEY NAIL AS THE CORNER LOCATION AND RE-MEASURED TO THE EXISTING TIES. PER PREVIOUS TIE SHEET DATED AUGUST 10, 2018.

ON APRIL 6, 2021, I FOUND A SURVEY NAIL AT THE CORNER LOCATION AND FOUR EXISTING WITNESS MONUMENTS AS SHOWN ON PREVIOUS TIE SHEET DATED AUGUST 10, 2018. EXISTING MONUMENT CHECKED WELL WITH WITNESS MONUMENTS AND WAS ACCEPTED AS THE CORNER LOCATION. MONUMENT AND WITNESSES WERE TIED BEFORE RECONSTRUCTION OF STATE HWY "82".

ON OCTOBER 27, 2021, AFTER CONSTRUCTION WAS COMPLETE, I SET A BERNTSEN SURVEY NAIL IN CONCRETE AT THE PREVIOUS SURVEYED LOCATION AND VERIFIED ALL WITNESS MONUMENTS AS PREVIOUSLY FOUND, WHICH WERE IN GOOD CONDITION.

(c) In the plan view drawing below, provide reference ties to at least 4 witness monuments. Witness monuments shall be concrete, natural stone, iron, bearing trees or other equally durable material, except wood other than bearing trees.

(d) Show a plan view drawing depicting the relevant monuments and reference ties which is sufficient in detail to enable accurate relocation of the corner monument if the corner monument is disturbed.

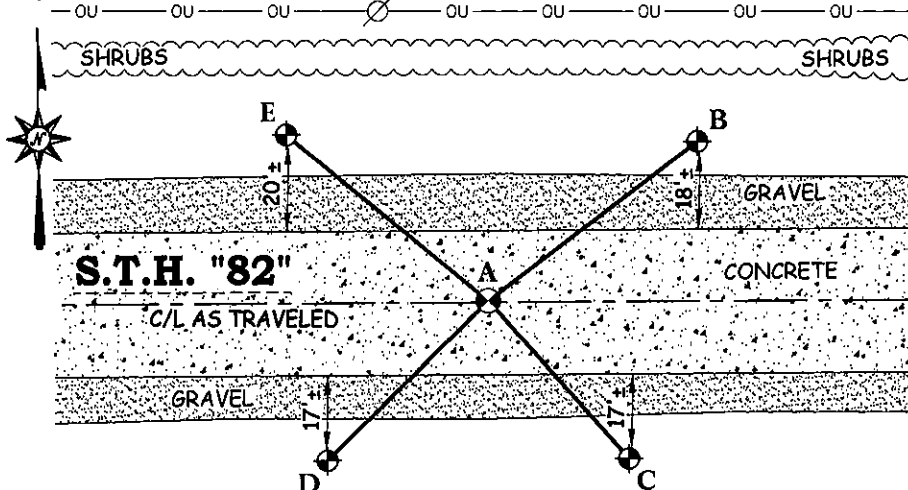
DRAFTED BY JORDAN G. BROST  
DRAWN BY TRAVIS PLANTICO

### LEGEND AND NOTES:

- SET BERNTSEN SURVEY MARKER NAIL
- DOT ALUMINUM CAP MONUMENT IN CONCRETE FOUND
- OVERHEAD UTILITIES LINE
- POWER POLE

### TIE SKETCH:

(SCALE: 1"=40')



A-B	(N 53°16'10" E)	(54.74')
	N 53°18'10"E	54.71'
A-C	(S 41°11'42" E)	(44.15')
	S 41°08'27"E	44.21'
A-D	(S 45°38'55" W)	
	S 45°38'45"W	47.10'
A-E	(N 49°38'44" W)	(54.64')
	N 49°41'18"W	54.67'

COORDINATES ARE REFERENCED TO THE ADAMS COUNTY COORDINATE SYSTEM AS DEVELOPED BY THE WISCONSIN DEPARTMENT OF TRANSPORTATION.

**U.S. PUBLIC LAND SURVEY MONUMENT RECORD**  
**ADAMS COUNTY**



Land Surveying  
Landscape Architecture  
Engineering  
**Jordan G. Brost, PLS #3009**  
4941 Kirsching Court  
Stevens Point, WI 54481  
715.344.9999 (Ph) 715.344.9922 (Fax)

(e) A description of any material discrepancy between the location of the corner monument as restored and the monument location of that corner as previously established.

(a) Identify the corner by reference to the U.S. public land survey system.

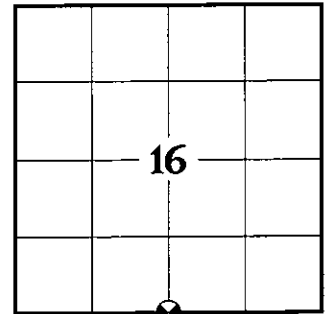
CORNER NO. 66  
ROMPORTOL ID: 41506160020  
SECTION 16  
TOWNSHIP 15 NORTH  
RANGE 06 EAST

(f) Was the corner restored through acceptance of (1) an obliterated evidence location, or (2) a found perpetuated location.

**FOUND PERPETUATED LOCATION**

(g & h) Was the corner reestablished through lost corner proportionate methods? If so, show the method, including the directions and distances to other public land survey corners used as evidence or used for proportioning in determining the corner location.

**NO**



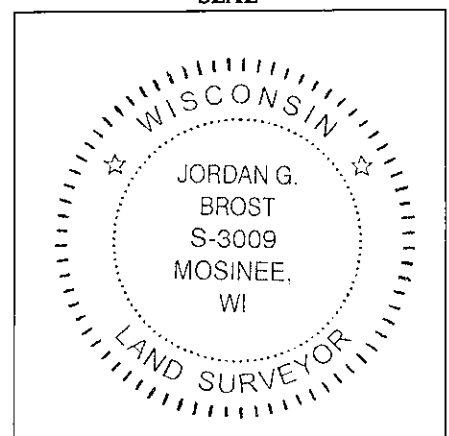
SECTION IDENTIFICATION

(i) I, *Jordan G. Brost*, hereby certify that the corner location shown on this record was determined by me or under my direction and control and that this U.S. Public Land Survey Monument Record is correct and complete to the best of my knowledge and belief.

Jordan G. Brost, PLS # 3009

11/24/2021  
Date

SEAL



## PUBLIC LAND SURVEY MONUMENT RECORD

TYPE OF MONUMENT: SURVEY NAIL  
 ADAMS COUNTY COORDINATES, NAD 83 (2007)

N. 148744.900

E. 539185.306

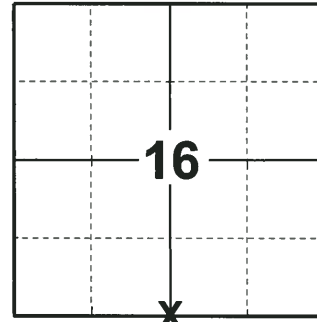
ELEVATION-      DATUM     

FIELD WORK DATE: 06/27/2018

### BASIS FOR MONUMENT LOCATION

2015 - PLS 2038 FOUND A HARRISON MONUMENT AND TIED PRIOR TO RECONSTRUCTION OF STH 82. TIES ARE FOUND DISCS IN CONCRETE THAT STATE "WISCONSIN DEPT. OF TRANSPORTATION DO NOT DISTURB".

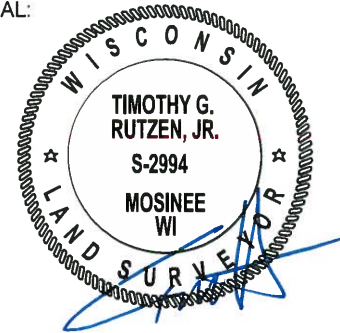
2018 - PLS 2994 FOUND A SURVEY NAIL IN THE ROAD SURFACE AND 4 TIES. THE MONUMENT AGREES WITH THE EXISTING TIES. ACCEPTED THE SURVEY NAIL AS THE CORNER LOCATION AND RE-MEASURED TO THE EXISTING TIES.



**LOCATION**

(INDICATE CORNER BY "X")

SEAL:

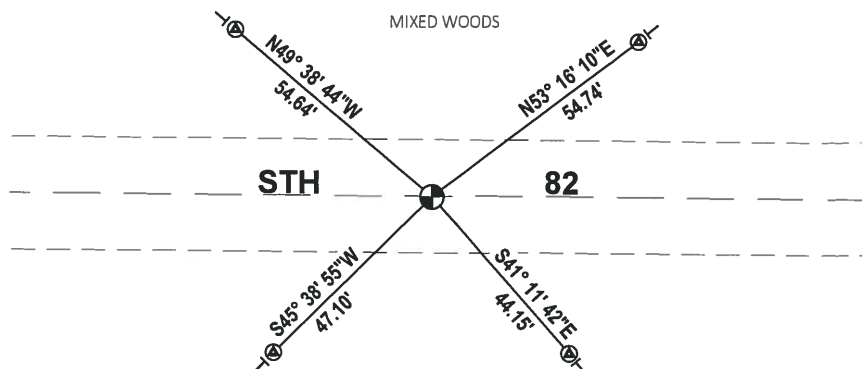
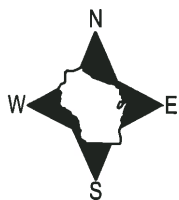


DATA SHOWN HERE ON THIS TIE SHEET IS CORRECT AND COMPLETE TO THE BEST OF MY KNOWLEDGE AND BELIEF.

PROFESSIONAL LAND SURVEYOR

DATE 6-10-18

### - TIE SKETCH



- ⊙ FOUND WISDOT ALUMINUM CAP IN CONCRETE
- ⊙ FOUND SURVEY NAIL
- ⊖ VINYL "T" POST

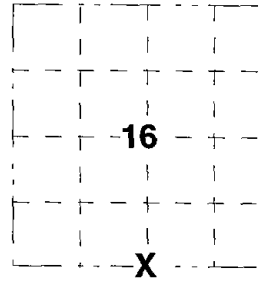
PINE PLANTATION

WOODED YARD

**Government Land Corner Certificate**

ADAMS County  
 TYPE OF MONUMENT HARRISON  
 STATE PLANE COORDINATES: N. \_\_\_\_\_  
 E. \_\_\_\_\_  
 ELEVATION \_\_\_\_\_ M.S.L. DATUM: \_\_\_\_\_  
 THETA ANGLE: \_\_\_\_\_  
 FIELD BOOK: \_\_\_\_\_ PAGE: \_\_\_\_\_  
 DRAWN BY: \_\_\_\_\_ E.W.

CORNER NO. 66  
 SECTION 16  
 TOWN T15N  
 RANGE R6E



**BASIS FOR MONUMENT LOCATION**

Show info such as; History of corner, with reference to Vol. and pg., dates, surveyor, exact description of monument replaced; if location computed by taped or EDM traverse; landowner remarks, etc. ( use reverse side if necessary ).

MONUMENT LOCATED AND TIED PRIOR TO RECONSTRUCTION OF THE HIGHWAY. NEW TIES PROVIDED. TIES ARE AL. DISC SET IN CONCRETE. DISC STATES WISCONSIN DEPARTMENT OF TRANSPORTATION DO NOT DISTURB.

*ALL OK, - 4-27-06 - JS-EW  
 " 1-10-11 GR-SS*

LOCATION  
 ( Indicated by 'X' )

SEAL:

DATA SHOWN HERE ON  
 CERTIFIED CORRECT:

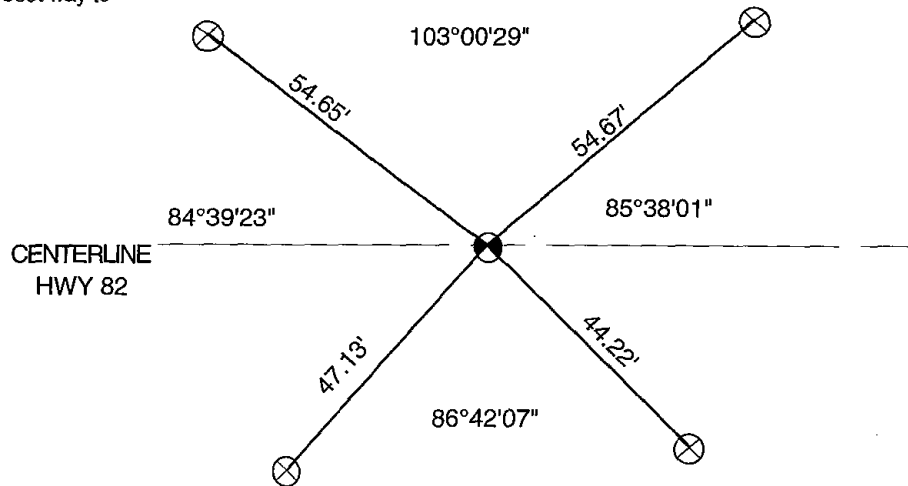
*[Handwritten Signature]*

Registered Land Surveyor

DATE 15 Nov 01

**TIE SKETCH**

Show at least four ties; also fence lines, roads, topo, size and type of witness trees' and if off road- best way to arrive at corner.



ADAMS COUNTY

Survey Monument Record

TYPE OF MONUMENT: Harrison Monument

STATE PLANE COORDINATES: N \_\_\_\_\_

E \_\_\_\_\_

ELEVATION — M.S.L. DATUM: \_\_\_\_\_

THETA ANGLE: \_\_\_\_\_

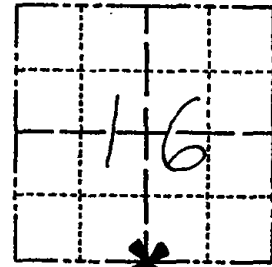
FIELD BOOK: 37 PAGE 46

CORNER NO. 1034 <sup>66</sup>

SECTION 16

TOWN 15

RANGE 6



LOCATION  
(Indicated by 'X')

SEAL:

BASIS FOR MONUMENT LOCATION

(Use reverse side if necessary)

Show info such as: History of corner, with reference to Vol. and pg. dates, surveyor; exact description of monument replaced; if location computed, by taped or EDM traverse; landowner remarks, etc.

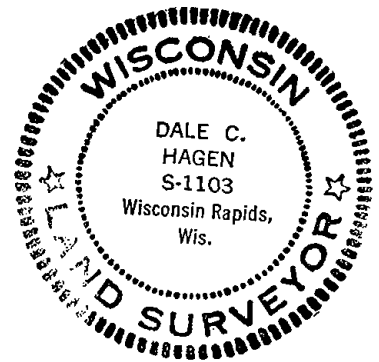
Ran EDM/transit traverse around Sections 9 and 16, and parts of adjoining sections to determine search areas for investigation.

Did not excavate with backhoe because search area falls within construction limits of S.T.H. 82, and no corner other than posts are of record.

Set corner Half way and on line between adjacent section corners.

Set 6-9-76.

SEE TIE SHEET WOODSTER 15 NOV. 01



CERTIFIED CORRECT:

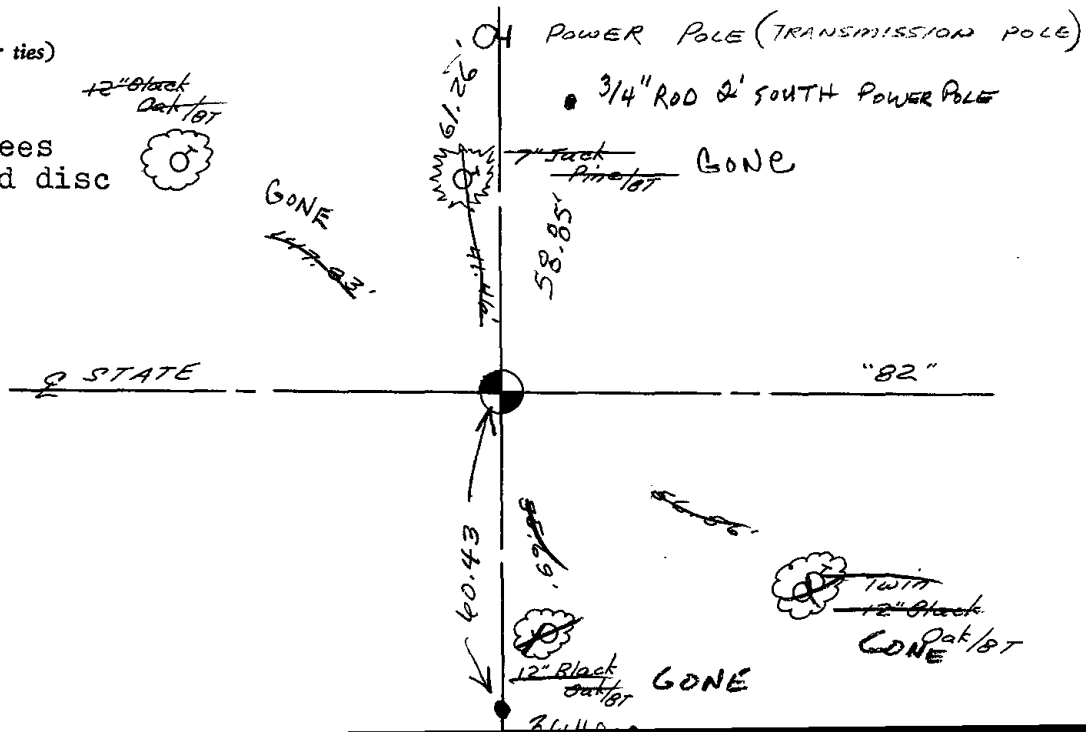
Dale C. Hagen  
Registered Land Surveyor  
DATE: 9-20-76

TIE SKETCH

(Show at least four ties)

NOTE:

Ties in trees to nail and disc in blaze.



ADAMS COUNTY

Survey Monument Record

TYPE OF MONUMENT: Harrison Monument

STATE PLANE COORDINATES: N \_\_\_\_\_  
E \_\_\_\_\_

ELEVATION — M.S.L. DATUM: \_\_\_\_\_

THETA ANGLE: \_\_\_\_\_

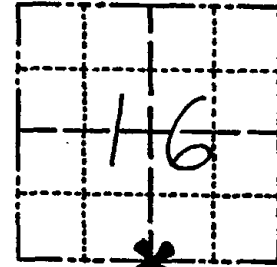
FIELD BOOK: 37 PAGE 46

CORNER NO. 1034

SECTION 16

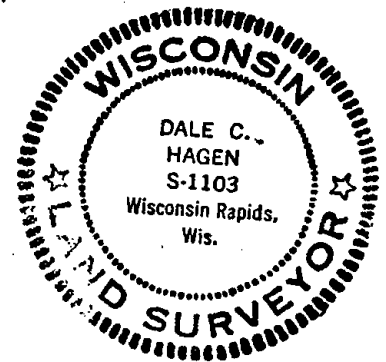
TOWN 15

RANGE 6



LOCATION  
(Indicated by 'X')

SEAL:



BASIS FOR MONUMENT LOCATION

(Use reverse side if necessary)

Show info such as: History of corner, with reference to Vol. and pg, dates, surveyor; exact description of monument replaced; if location computed, by taped or EDM traverse; landowner remarks, etc.

Ran EDM/transit traverse around Sections 9 and 16, and parts of adjoining sections to determine search areas for investigation.

Did not excavate with backhoe because search area falls within construction limits of S.T.H. 82, and no corner other than posts are of record.

Set corner Half way and on line between adjacent section corners.

Set 6-9-76.

3-91 New Ties Mark Carlson

CERTIFIED CORRECT:

Dale C. Hagen

Registered Land Surveyor

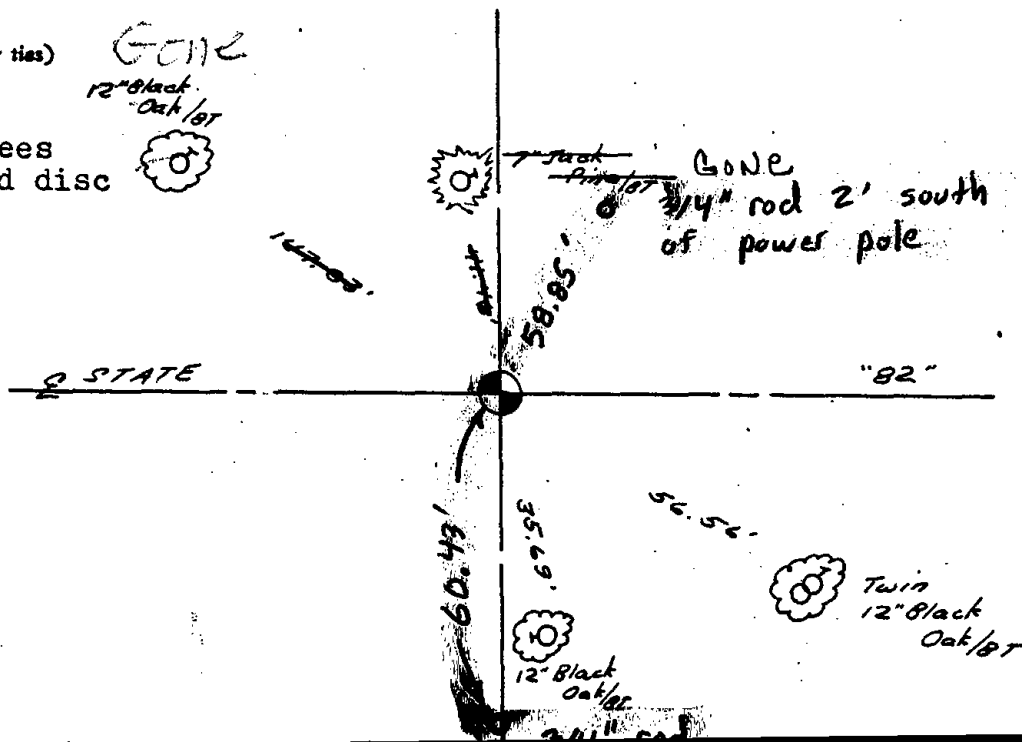
DATE: 9-20-76

TIE SKETCH

(Show at least four ties)

NOTE:

Ties in trees to nail and disc in blaze.

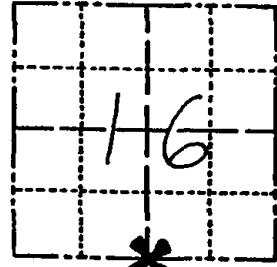


ADAMS COUNTY

CORNER NO. 1034  
SECTION 16  
TOWN 15  
RANGE 6

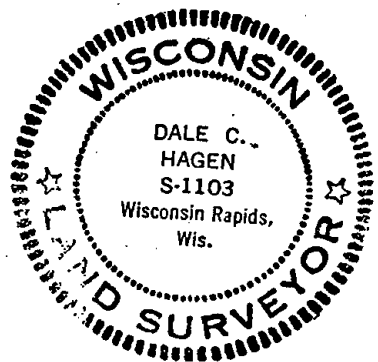
Survey Monument Record

TYPE OF MONUMENT: Harrison Monument  
STATE PLANE COORDINATES: N \_\_\_\_\_  
E \_\_\_\_\_  
ELEVATION — M.S.L. DATUM: \_\_\_\_\_  
THETA ANGLE: \_\_\_\_\_  
FIELD BOOK: 37 PAGE 46



LOCATION  
(Indicated by 'X')

SEAL:



BASIS FOR MONUMENT LOCATION

(Use reverse side if necessary)

Show info such as: History of corner, with reference to Vol. and pg. dates, surveyor; exact description of monument replaced; if location computed, by taped or EDM traverse; landowner remarks, etc.

Ran EDM/transit traverse around Sections 9 and 16, and parts of adjoining sections to determine search areas for investigation.

Did not excavate with backhoe because search area falls within construction limits of S.T.H. 82, and no corner other than posts are of record.

Set corner Half way and on line between adjacent section corners.

Set 6-9-76.

10-3-91 New Ties Mark Carlson  
8-22-96 TIES OK Steve Steyer

CERTIFIED CORRECT:

*Dale C. Hagen*

Registered Land Surveyor

DATE: 9-20-76

TIE SKETCH

(Show at least four ties)

NOTE:

Ties in trees to nail and disc in blaze.

