

U.S. PUBLIC LAND SURVEY MONUMENT RECORD

ADAMS COUNTY



Land Surveying
Landscape Architecture
Engineering
Jordan G. Brost, PLS #3009
4941 Kirschling Court
Stevens Point, WI 54481
715.344.9999 (Ph) 715.344.9922 (Fax)

This record shall show the location of the corner and shall include all of the following nine elements (a through i)

TYPE OF MONUMENT: BERNTSEN SURVEY MARKER NAIL

ADAMS COUNTY COORDINATES: N: 148884.321

E: 552330.975

ELEVATION: -M.S.L. DATUM _____

ELLIP. HEIGHT: _____

LATITUDE: _____

LONGITUDE: _____

- FOUND
- SET
- RE-SET
- RE-TIED

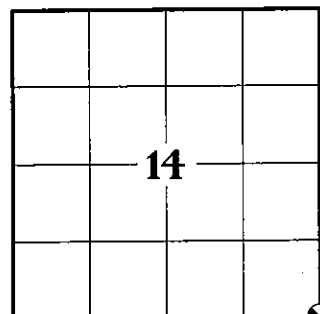
ORDER OF ACCURACY:

- FIRST _____
- SECOND _____
- THIRD X
- FOURTH _____
- UNKNOWN _____
- OTHER _____

REFERENCE DATUM: NAD 83 (2011)

(a) Identify the corner by reference to the U.S. public land survey system.

CORNER NO. 71
ROMPORTOL ID: 41506140000
SECTION 14
TOWNSHIP 15 NORTH
RANGE 06 EAST



SECTION IDENTIFICATION

(b) Describe any record evidence, monument evidence, occupational evidence, testimonial evidence, or any other material evidence considered by the professional land surveyor, and whether the monument was found or placed

ANTHONY B. KIEDROWSKI, PLS 878 DISPUTED HARRISON MONUMENT ESTABLISHED IN 1971 BY CO. SURVEYOR MULLEN. KIEDROWSKI REMOVED HARRISON SET BY MULLEN AND REPLACED WITH A 1" IRON PIPE. PER PREVIOUS TIE SHEET DATED DECEMBER 27, 1973.

ERNEST WOORSTER, PLS 1741 LOCATED AND TIED PRIOR TO RECONSTRUCTION OF THE HIGHWAY. NEW TIES PROVIDED. TIES ARE AL. DISC SET IN CONCRETE. DISC STATES WISCONSIN DEPARTMENT OF TRANSPORTATION DO NOT DISTURB. PER PREVIOUS TIE SHEET DATED NOVEMBER 15, 2001.

TIMOTHY G. RUTZEN, JR., PLS 2994 FOUND A HARRISON MONUMENT WITH A BROKEN TOP 8" BELOW THE ROAD SURFACE AND 3 TIES AND A R/W IRON. THE MONUMENT AGREES WITH THE EXISTING TIES. ACCEPTED THE HARRISON MONUMENT WITH THE BROKEN TOP AS THE CORNER LOCATION AND RE-MEASURED THE EXISTING TIES AND R/W IRON. PER PREVIOUS TIE SHEET DATED AUGUST 10, 2018.

ON APRIL 6, 2021, I FOUND A HARRISON MONUMENT AT THE CORNER LOCATION AND FOUR EXISTING WITNESS MONUMENTS AS SHOWN ON PREVIOUS TIE SHEET DATED AUGUST 10, 2018. EXISTING MONUMENT CHECKED WELL WITH WITNESS MONUMENTS AND WAS ACCEPTED AS THE CORNER LOCATION. MONUMENT AND WITNESSES WERE TIED BEFORE RECONSTRUCTION OF STATE HWY "82".

ON OCTOBER 27, 2021, AFTER CONSTRUCTION WAS COMPLETE, I SET A BERNTSEN SURVEY NAIL IN CONCRETE AT THE PREVIOUS SURVEYED LOCATION AND VERIFIED ALL WITNESS MONUMENTS AS PREVIOUSLY FOUND, WHICH WERE IN GOOD CONDITION.

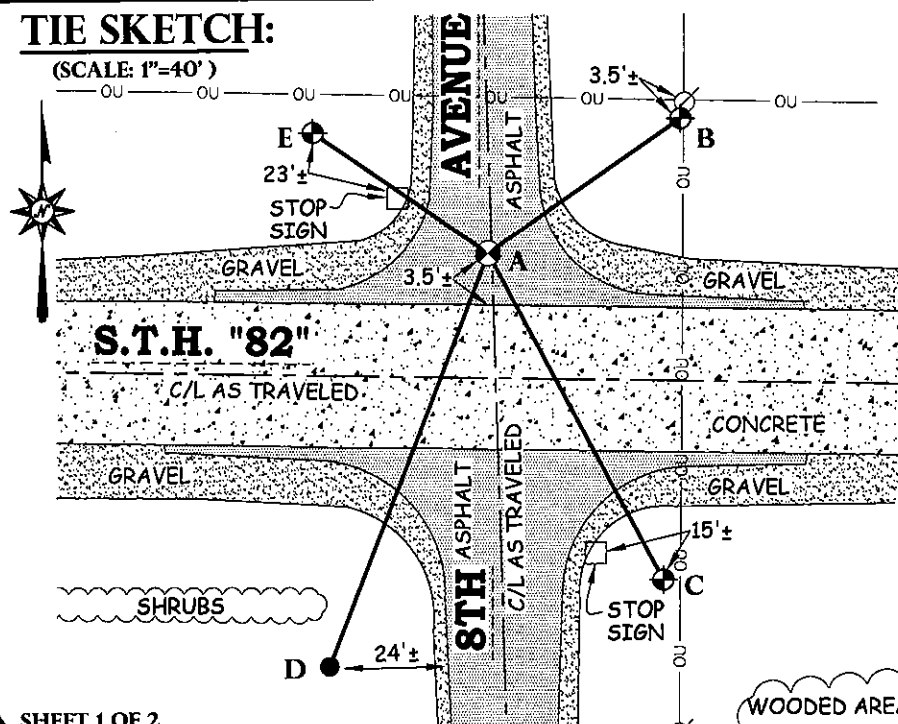
(c) In the plan view drawing below, provide reference ties to at least 4 witness monuments. Witness monuments shall be concrete, natural stone, iron, bearing trees or other equally durable material, except wood other than bearing trees.

(d) Show a plan view drawing depicting the relevant monuments and reference ties which is sufficient in detail to enable accurate relocation of the corner monument if the corner monument is disturbed.

DRAFTED BY **JORDAN G. BROST**
DRAWN BY **TRAVIS PLANTICO**

TIE SKETCH:

(SCALE: 1"=40')



LEGEND AND NOTES:

- SET BERNTSEN SURVEY MARKER NAIL
- DOT ALUMINUM CAP MONUMENT IN CONCRETE FOUND
- 3/4" IRON BAR FOUND
- OVERHEAD UTILITIES LINE
- POWER POLE

A-B	(N 55°03'59" E) (48.94')
	(N 55°02'48" E) 48.96'
A-C	(S 28°02'48" E) (77.52')
	(S 28°02'34" E) 77.54'
A-D	(S 20°54'48" W) (92.31')
	(S 20°54'48" W) 92.32'
A-E	(N 54°57'33" W) (44.52')
	(N 55°01'30" W) 44.54'

COORDINATES ARE REFERENCED TO THE ADAMS COUNTY COORDINATE SYSTEM AS DEVELOPED BY THE WISCONSIN DEPARTMENT OF TRANSPORTATION.

U.S. PUBLIC LAND SURVEY MONUMENT RECORD
ADAMS COUNTY



Land Surveying
Landscape Architecture
Engineering
Jordan G. Brost, PLS #3009
4941 Kirschling Court
Stevens Point, WI 54481
715.344.9999(PH) 715.344.9922(FX)

(e) A description of any material discrepancy between the location of the corner monument as restored and the monument location of that corner as previously established.

(a) Identify the corner by reference to the U.S. public land survey system.

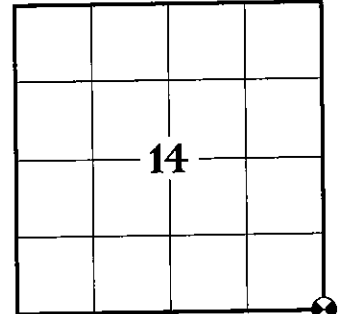
CORNER NO. 71
ROMPORTOL ID: 41506140000
SECTION 14
TOWNSHIP 15 NORTH
RANGE 06 EAST

(f) Was the corner restored through acceptance of (1) an obliterated evidence location, or (2) a found perpetuated location.

FOUND PERPETUATED LOCATION

(g & h) Was the corner reestablished through lost corner proportionate methods? If so, show the method, including the directions and distances to other public land survey corners used as evidence or used for proportioning in determining the corner location.

NO



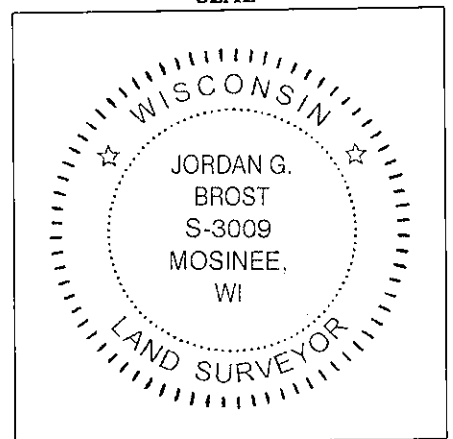
SECTION IDENTIFICATION

(i) I, Jordan G. Brost, hereby certify that the corner location shown on this record was determined by me or under my direction and control and that this U.S. Public Land Survey Monument Record is correct and complete to the best of my knowledge and belief.

Jordan G. Brost, PLS # 3009

11/24/2021
Date

SEAL



PUBLIC LAND SURVEY MONUMENT RECORD

TYPE OF MONUMENT: HARRISON (BROKEN-TOP)
ADAMS COUNTY COORDINATES, NAD 83 (2007)

N. 148884.320
E. 552330.844

ELEVATION: DATUM

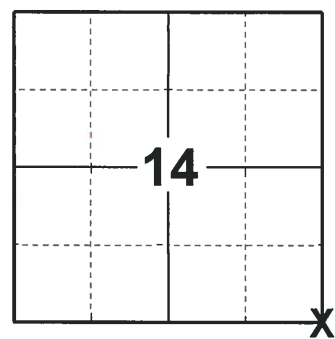
FIELD WORK DATE: 06/27/2018

BASIS FOR MONUMENT LOCATION

1973 - PLS 878 THIS CORNER WAS MONUMENTED BY CO. SURVEYOR MULLEN IN 1971, BUT IT WAS DISPUTED. ESTABLISHED THE CORNER POSITION AFTER ANALYZING AN EXTENSIVE EDM TRAVERSE OF THE FOUR SECTIONS SURROUNDING THIS CORNER, TAKING INTO ACCOUNT ALL POSSESSION LINES, THE STONE FOUND ONE MILE SOUTH OF HERE AND THE 1-1/4" IRON PIPE FOUND ONE MILE NORTH OF HERE. REMOVED THE HARRISON SET BY MULLEN AND REPLACED IT WITH A 1" IRON PIPE AND TIED OUT.

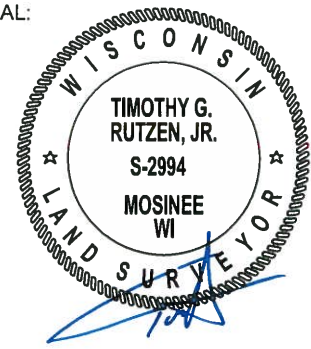
2001 - PLS 1741 MONUMENT WAS LOCATED AND TIED PRIOR TO RECONSTRUCTION OF THE HIGHWAY. NEW TIES PROVIDED. TIES ARE ALUMINUM DISC SET IN CONCRETE. DISC STATES WISCONSIN DEPARTMENT OF TRANSPORTATION DO NOT DISTURB. SET A HARRISON AT THE CORNER LOCATION.

2018 - PLS 2994 FOUND A HARRISON MONUMENT WITH A BROKEN-TOP 8" BELOW THE ROAD SURFACE, 3 TIES AND A R/W IRON. THE MONUMENT AGREES WITH THE EXISTING TIES. ACCEPTED THE HARRISON MONUMENT WITH A BROKEN-TOP AS THE CORNER LOCATION. RE-MEASURED TO THE EXISTING TIES AND R/W IRON.



LOCATION
(INDICATE CORNER BY "X")

SEAL:



DATA SHOWN HERE ON THIS TIE SHEET IS CORRECT AND COMPLETE TO THE BEST OF MY KNOWLEDGE AND BELIEF.

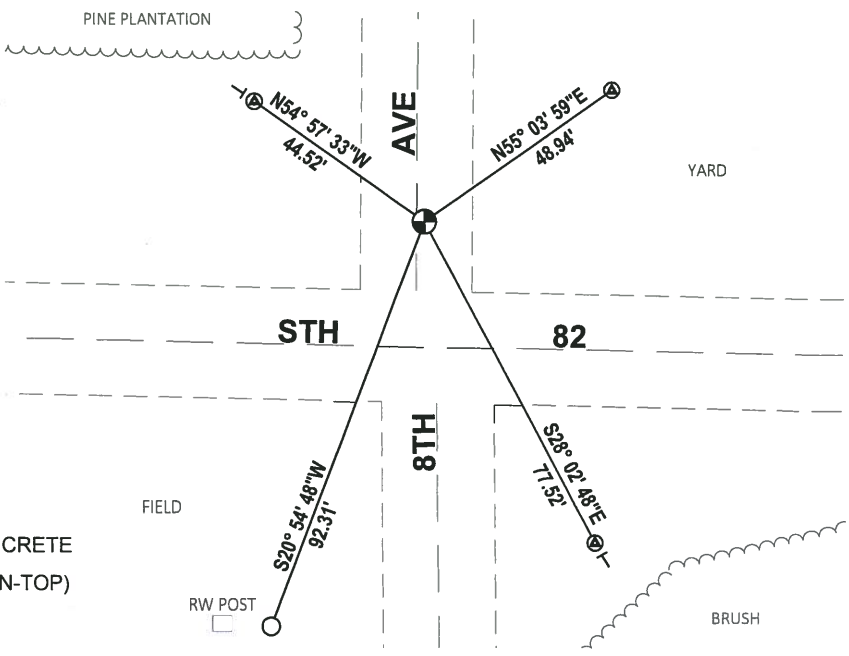
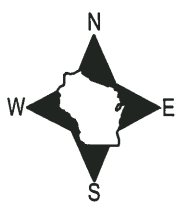
PROFESSIONAL LAND SURVEYOR

DATE 8-10-18

- TIE SKETCH -

NOTE 1: THE CORNER FALLS 1.5' EAST OF THE CENTERLINE OF 8TH AVE AND 27' NORTH OF THE CENTERLINE OF STH 82.

NOTE 2: THE CORNER IS IN A 12" MANHOLE.

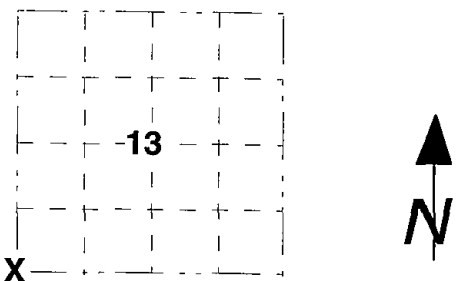


- SET 3/4" x 18" IRON REBAR, 1.50#/FT
- FOUND 3/4" IRON ROD
- Ⓐ FOUND WISDOT ALUMINUM CAP IN CONCRETE
- ⊕ FOUND HARRISON MONUMENT (BROKEN-TOP)
- ⊖ VINYL "T" POST

Government Land Corner Certificate

ADAMS County
 TYPE OF MONUMENT HARRISON
 STATE PLANE COORDINATES: N. _____
 E. _____
 ELEVATION _____ M.S.L. DATUM: _____
 THETA ANGLE: _____
 FIELD BOOK: _____ PAGE: _____
 DRAWN BY: E.W.

CORNER NO. 71
 SECTION 13
 TOWN T15N
 RANGE R6E



BASIS FOR MONUMENT LOCATION

Show info such as; History of corner, with reference to Vol. and pg., dates, surveyor, exact description of monument replaced; if location computed by taped or EDM traverse; landowner remarks, etc. (use reverse side if necessary).

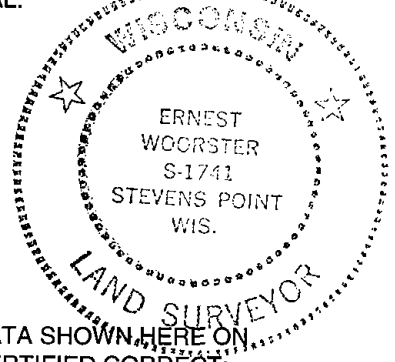
MONUMENT LOCATED AND TIED PRIOR TO RECONSTRUCTION OF THE HIGHWAY. NEW TIES PROVIDED. TIES ARE AL. DISC SET IN CONCRETE. DISC STATES WISCONSIN DEPARTMENT OF TRANSPORTATION DO NOT DISTURB.

*ALL OK, 4-27-06, JG-EW
 OK 1-10-11 GR-SS*

LOCATION

(Indicated by 'X')

SEAL:



DATA SHOWN HERE ON CERTIFIED CORRECT!

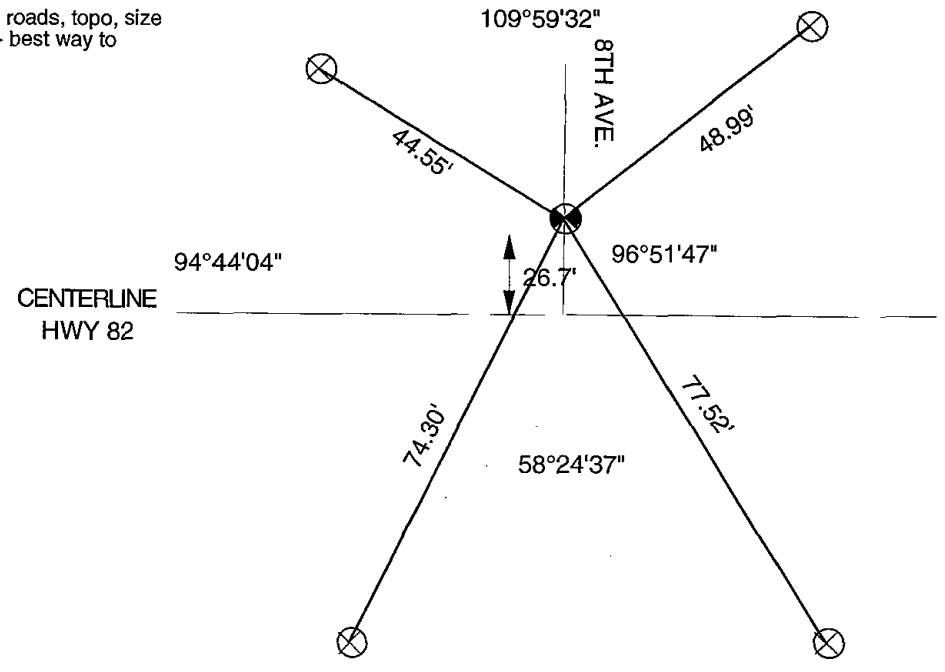
[Handwritten Signature]

Registered Land Surveyor

DATE 15 Nov 01

TIE SKETCH

Show at least four ties; also fence lines, roads, topo, size and type of witness trees' and if off road- best way to arrive at corner.



ADAMS COUNTY

Survey Monument Record

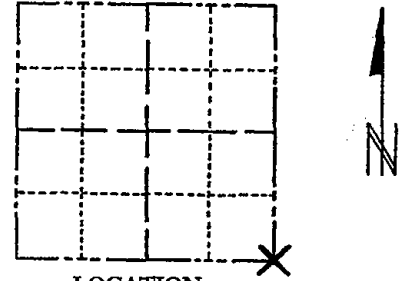
TYPE OF MONUMENT: 30" HARRISON
STATE PLANE COORDINATES: N _____
E _____

ELEVATION — M.S.L. DATUM: _____

THETA ANGLE: _____

FIELD BOOK: 110 PAGE 13

CORNER NO. 116 (71)
SECTION 14
TOWN 15
RANGE 6



LOCATION
(Indicated by 'X')

BASIS FOR MONUMENT LOCATION

(Use reverse side if necessary)

Show info such as: History of corner, with reference to Vol. and pg, dates, surveyor; exact description of monument replaced; if location computed, by taped or EDM traverse; landowner remarks, etc.

This corner monumented by Co. Surveyor Mullen in 1971., but was disputed. this point established after analyzing an extensive EDM traverse of the four sections surrounding this corner, taking into account all possession lines and the stone found one mile south of here and the 1 1/4" iron pipe found one mile north of here. Harrison set by Mullen removed and replaced with a 1" iron pipe.

SEAL:



CORNER O.K. 9-25-76 RN-SS
OK 1-21-86 GR-SS
ALL OK 1-31-91 KE-JG
TIE GONE 2-7-96 CR-JG
ALL OK 1-29-01 JG-M.H.
SEE TIE SHEET WOODSTER 15 NO. 01

CERTIFIED CORRECT:

Anthony B. Kiedrowski
Registered Land Surveyor

DATE: 12/27/73

TIE SKETCH

(Show at least four ties)

