

19  
SECTION

15  
TOWN

06  
RANGE

# ADAMS COUNTY

COUNTY CORNER NO: 75

ROMPORTOL ID: 41506192000

## PUBLIC LAND SURVEY MONUMENT RECORD

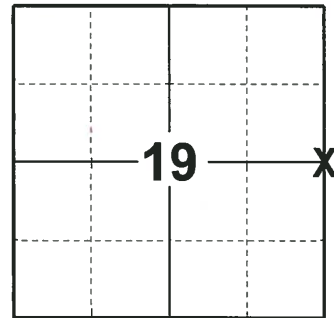
TYPE OF MONUMENT: HARRISON (BROKEN-TOP)  
ADAMS COUNTY COORDINATES, NAD 83 (2007)

N. 146119.469

E. 531277.642

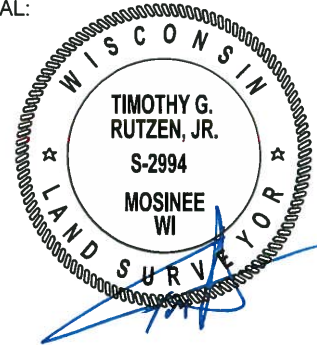
ELEVATION-      DATUM     

FIELD WORK DATE: 07/11/2018



**LOCATION**  
(INDICATE CORNER BY "X")

SEAL:



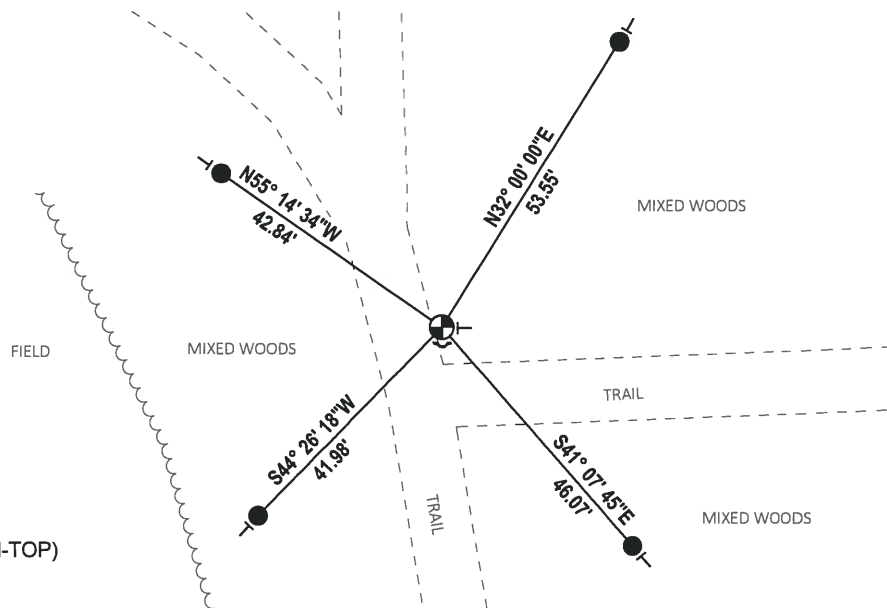
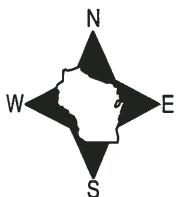
DATA SHOWN HERE ON THIS TIE SHEET IS CORRECT AND COMPLETE TO THE BEST OF MY KNOWLEDGE AND BELIEF.

PROFESSIONAL LAND SURVEYOR

DATE 8-10-18

### - TIE SKETCH

NOTE: THE CORNER FALLS 6± EAST OF THE CENTERLINE OF THE TRAIL.



- SET 3/4" x 18" IRON REBAR, 1.50#/FT
- ⊕ FOUND HARRISON MONUMENT (BROKEN-TOP)
- ✓ STEEL FENCE POST
- ┌ VINYL "T" POST



ADAMS

~~LINEAL~~ COUNTY

Survey Monument Record

TYPE OF MONUMENT: HARRISON

STATE PLANE COORDINATES: N \_\_\_\_\_

E \_\_\_\_\_

ELEVATION — M.S.L. DATUM: \_\_\_\_\_

THETA ANGLE: \_\_\_\_\_

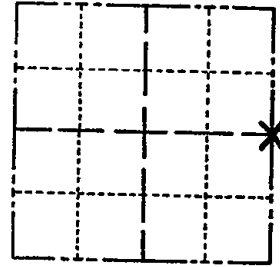
FIELD BOOK: \_\_\_\_\_ PAGE \_\_\_\_\_

CORNER NO. 75

SECTION 19

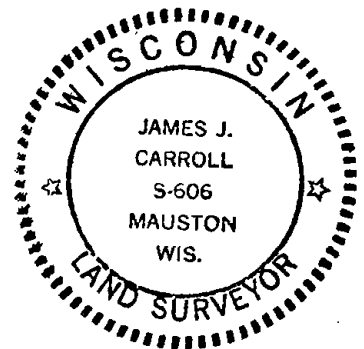
TOWN 15

RANGE 6



LOCATION  
(Indicated by 'X')

SEAL:



BASIS FOR MONUMENT LOCATION

(Use reverse side if necessary)

Show info such as: History of corner, with reference to Vol. and pg, dates, surveyor; exact description of monument replaced; if location computed, by taped or EDM traverse; landowner remarks, etc.

This is a new tie sheet for an existing Harrison monument as all previous tie's have been removed. This Harrison is broken off +12" down. We set up over the remaining part and re-set the top with optical plumbing, and mounded the monument with sandy dirt.

CERTIFIED CORRECT:

James J. Carroll

Registered Land Surveyor

DATE: Feb. 19, 1981

TIE SKETCH

(Show at least four ties)

