

PUBLIC LAND SURVEY MONUMENT RECORD

TYPE OF MONUMENT: HARRISON
 ADAMS COUNTY COORDINATES, NAD 83 (2007)

N. 146084.564

E. 541796.572

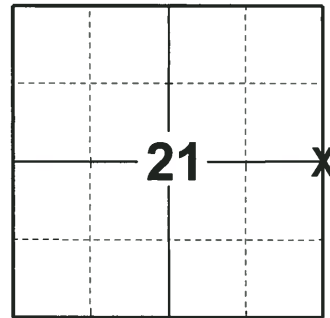
ELEVATION- DATUM

FIELD WORK DATE: 07/03/2018

BASIS FOR MONUMENT LOCATION

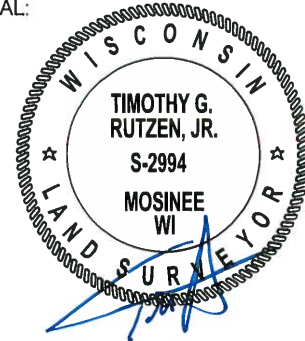
2014 -PLS 2443 THE LAST TIE SHEET ON FILE FOR THIS CORNER IS DATED SEPTEMBER 20, 1976 BY DALE C. HAGEN, R.L.S. 1103. HAGEN STATES HE SET A HARRISON MONUMENT AT THE CORNER "PROPORTIONATE AND ON LINE BETWEEN ADJACENT SECTION CORNERS". NUMEROUS NOTATIONS BY OTHER SURVEYORS ALSO APPEAR IN THE TIE SHEET. FOUND THE STANDARD HARRISON CAST IRON MONUMENT AS NOTED BY HAGEN AND ESTABLISHED REFERENCE TIES TO PERPETUATE THE CORNER LOCATION.

2018 - PLS 2994 FOUND A HARRISON MONUMENT 6" BELOW THE ROAD SURFACE, 2 TIES AND 1 WITNESS. THE MONUMENT AGREES WITH THE EXISTING TIES AND WITNESS. ACCEPTED THE HARRISON MONUMENT AS THE CORNER LOCATION. SET 3 NEW TIES AND MEASURED TO THE TIES AND WITNESS.



LOCATION
 (INDICATE CORNER BY "X")

SEAL:



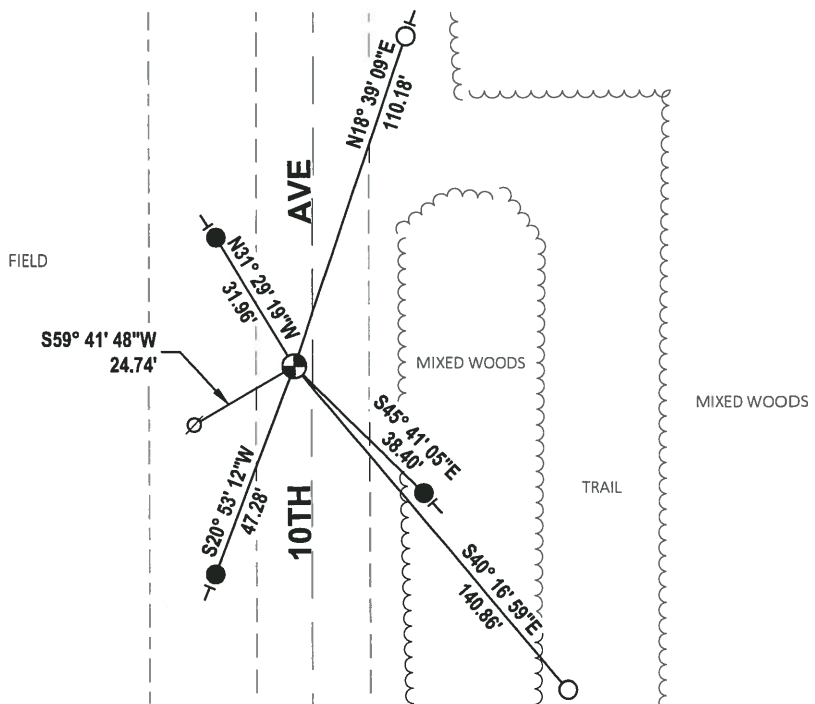
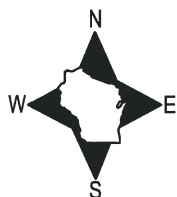
DATA SHOWN HERE ON THIS TIE SHEET IS CORRECT AND COMPLETE TO THE BEST OF MY KNOWLEDGE AND BELIEF.

PROFESSIONAL LAND SURVEYOR

DATE 8-10-18

- TIE SKETCH

NOTE: THE CORNER FALLS 4± WEST OF THE CENTERLINE OF 10TH AVE.



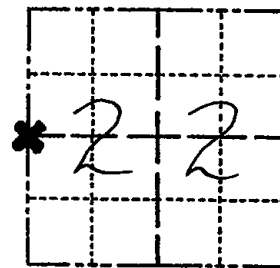
- SET 3/4" x 18" IRON REBAR, 1.50#/FT
- FOUND 3/4" IRON ROD
- ⊕ FOUND HARRISON MONUMENT
- ∅ WITNESS POWER POLE
- VINYL "T" POST

ADAMS COUNTY

Survey Monument Record

TYPE OF MONUMENT: Harrison
 STATE PLANE COORDINATES: N _____
 E _____
 ELEVATION — M.S.L. DATUM: _____
 THETA ANGLE: _____
 FIELD BOOK: 37 PAGE 44

CORNER NO. 1037
 SECTION 22
 TOWN 15
 RANGE 6



LOCATION
(Indicated by 'X')

SEAL:

BASIS FOR MONUMENT LOCATION

(Use reverse side if necessary)

Show info such as: History of corner, with reference to Vol. and pg, dates, surveyor; exact description of monument replaced; if location computed, by taped or EDM traverse; landowner remarks, etc.

Ran EDM/transit traverse around Sections 9 and 16 to determine search areas for investigation.

Also ran around adjacent sections.

Excavation with backhoe yielded no evidence of the original corner or any remonumentation.

Set corner proportionate and on line between adjacent Section corners.

Set 6-9-76.



CERTIFIED CORRECT:

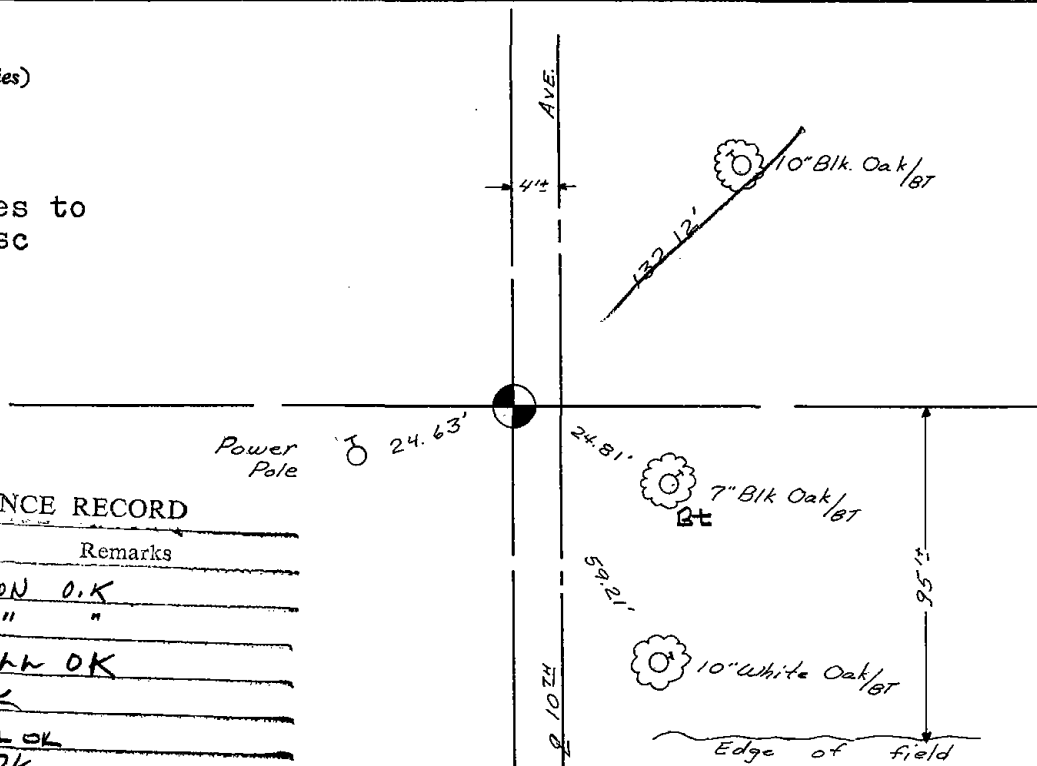
Dale C. Hagen
 Registered Land Surveyor
 DATE: 9-20-76

TIE SKETCH

(Show at least four ties)

NOTE:

Ties in trees to nail and disc in blaze.



MAINTENANCE RECORD

Date	Init.	Remarks
11-10-81	TH-DW	MON O.K.
1-16-86	GR-SS	" "
1-31-91	KE-JG	ALL OK
2-7-96	CR-VG	OK
2-1-01	MH-DH	ALL OK
5-12-06	JG	OK