

22
SECTION

15
TOWN

06
RANGE

ADAMS COUNTY

COUNTY CORNER NO: 78

ROMPORTOL ID: 41506222000

PUBLIC LAND SURVEY MONUMENT RECORD

TYPE OF MONUMENT: HARRISON (BROKEN-TOP)
ADAMS COUNTY COORDINATES, NAD 83 (2007)

N. 146270.065

E. 547039.454

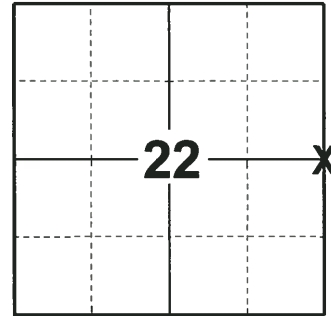
ELEVATION- DATUM

FIELD WORK DATE: 07/03/2018

BASIS FOR MONUMENT LOCATION

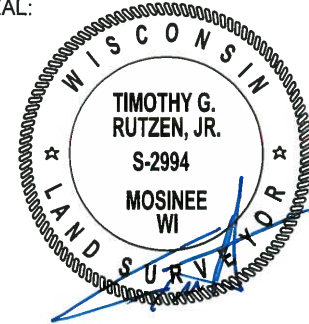
2014 - PLS 2443 THE LAST TIE SHEET ON FILE FOR THIS CORNER IS DATED DECEMBER 27, 1973 BY ANTHONY B. KIEDROWSKI, R.L.S. 878. HE STATES THAT HE FOUND A 3/4" IRON ROD AT THE CORNER "SET BY MIDSTATES" AND REPLACED IT WITH A 30" HARRISON MONUMENT. NUMEROUS NOTATIONS BY OTHER SURVEYORS ALSO APPEAR ON THE TIE SHEET. FOUND THE STANDARD HARRISON CAST IRON MONUMENT (TOP BROKEN OFF) AS NOTED BY KIEDROWSKI AND ESTABLISHED REFERENCE TIES TO PERPETUATE THE CORNER LOCATION.

2018 - PLS 2994 FOUND A HARRISON MONUMENT WITH A BROKEN-TOP 10" BELOW THE ROAD SURFACE AND 3 TIES. THE MONUMENT AGREES WITH THE EXISTING TIES. ACCEPTED THE HARRISON MONUMENT WITH A BROKEN-TOP AS THE CORNER LOCATION. SET 2 NEW TIES AND MEASURED TO THE TIES.



LOCATION
(INDICATE CORNER BY "X")

SEAL:



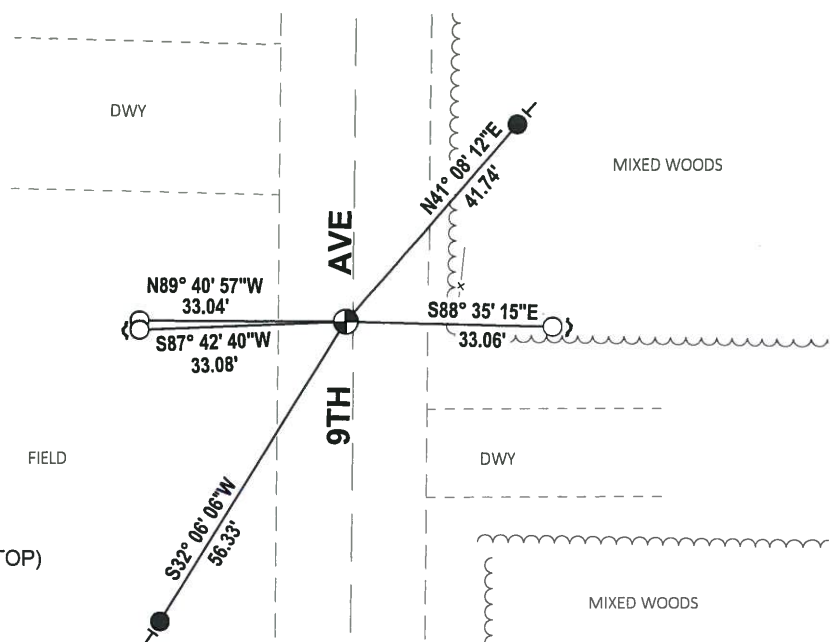
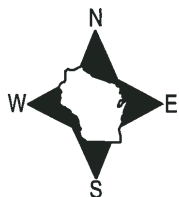
DATA SHOWN HERE ON THIS TIE SHEET IS CORRECT AND COMPLETE TO THE BEST OF MY KNOWLEDGE AND BELIEF.

PROFESSIONAL LAND SURVEYOR

DATE 8-10-18

- TIE SKETCH

NOTE: THE CORNER FALLS 1'± WEST OF THE CENTERLINE OF 9TH AVE.



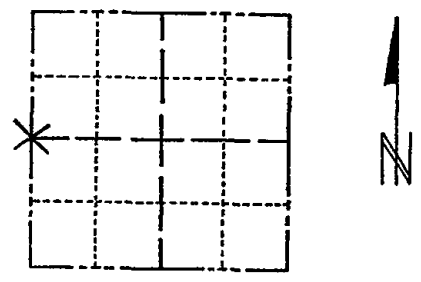
- SET 3/4" x 18" IRON REBAR, 1.50#/FT
- FOUND 3/4" IRON ROD
- ⊕ FOUND HARRISON MONUMENT (BROKEN-TOP)
- ↙ STEEL FENCE POST
- ┆ VINYL "T" POST

ADAMS COUNTY

Survey Monument Record

TYPE OF MONUMENT: 30" HARRISON
 STATE PLANE COORDINATES: N _____
 E _____
 ELEVATION — M.S.L. DATUM: _____
 THETA ANGLE: _____
 FIELD BOOK: 110 PAGE 31

CORNER NO. 508
 SECTION 23
 TOWN 15
 RANGE 6



LOCATION
(Indicated by 'X')

SEAL:

BASIS FOR MONUMENT LOCATION

(Use reverse side if necessary)

Show info such as: History of corner, with reference to Vol. and pg, dates, surveyor; exact description of monument replaced; if location computed, by taped or EDM traverse; landowner remarks, etc.

Found 3/4" iron rod set by Midstates and monumented same. No other evidence found.

CORNER O.K. 10-13-76 JS-SS



MAINTENANCE RECORD

Date	Init.	Remarks
11-10-81	TH-DW	MON. OIK
1-21-86	GR-SS	OK
1-31-91	KE-JG	OK
2-7-96	CR-JG	OK
2-1-01	MH-JG	OK
4-28-06	JG	3-GONE, 3-NEW, TOP BROKEN OFF MON.
01-13-11	SS	OK

CERTIFIED CORRECT:

Anthony B. Kiedrowski
 Registered Land Surveyor

DATE: 12/27/13

TIE SKETCH

(Show at least four ties)

Ties are to nail and disc in blazed trees.

