

24  
SECTION

15  
TOWN

05  
RANGE

# ADAMS COUNTY

COUNTY CORNER NO: 93

ROMPORTOL ID: 41505240000

## PUBLIC LAND SURVEY MONUMENT RECORD

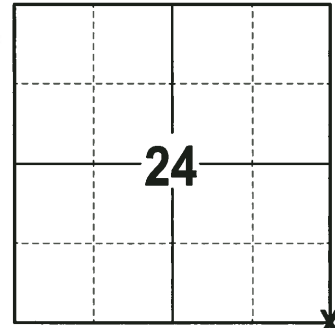
TYPE OF MONUMENT: HARRISON (BROKEN-TOP)  
ADAMS COUNTY COORDINATES, NAD 83 (2007)

N. 143459.311

E. 525873.614

ELEVATION-      DATUM     

FIELD WORK DATE: 10/10/2017



**LOCATION**  
(INDICATE CORNER BY "X")

SEAL:



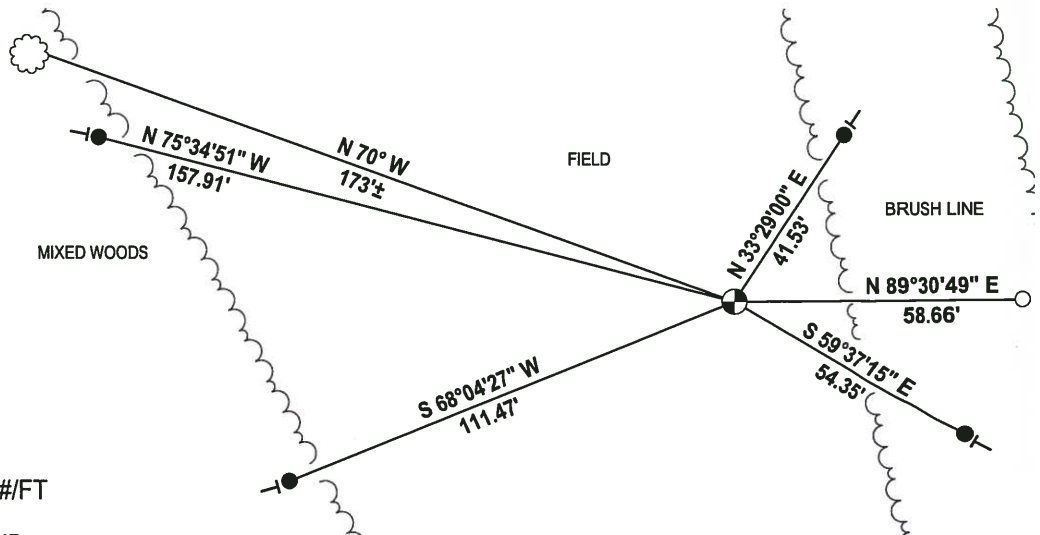
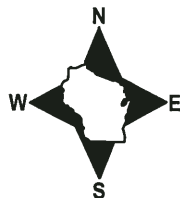
DATA SHOWN HERE ON THIS TIE SHEET IS CORRECT AND COMPLETE TO THE BEST OF MY KNOWLEDGE AND BELIEF.

PROFESSIONAL LAND SURVEYOR

DATE 12-4-17

### - TIE SKETCH

NOTE: THE CORNER FALLS 125± WEST OF THE CENTERLINE OF STH 113.



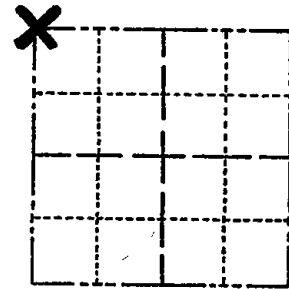
- 3/4" x 18" IRON REBAR SET, 1.50#/FT
- 3/4" IRON ROD FOUND
- ⊕ HARRISON (BROKEN-TOP) FOUND
- VINYL "T" POST
- ☁ WITNESS TREE FOUND

ADAMS COUNTY

Survey Monument Record

TYPE OF MONUMENT: Standard Harrison
STATE PLANE COORDINATES: N
E
ELEVATION - M.S.L. DATUM:
THETA ANGLE:
FIELD BOOK: PAGE

CORNER NO. 841
SECTION 30
TOWN 15
RANGE 6



LOCATION (Indicated by 'X')

SEAL:



BASIS FOR MONUMENT LOCATION

(Use reverse side if necessary)

Show info such as: History of corner, with reference to Vol. and pg, dates, surveyor; exact description of monument replaced; if location computed, by taped or EDM traverse; landowner remarks, etc.

Ran EDM/transit traverse around Sections 19 and 30, to determine search areas for investigation.

Could find no evidence of the original corner or any remonumentation.

Set corner by single proportionate measure along the Town line between the adjacent Section corners.

Corner & ties o.k. 3-31-76 GR-SS
" " " 1-28-86 GR-SS
" " " 3-13-91 JG

OK, 1-17-96 JG-SS

FO 15" DEEP - TOP BROKEN - TIES W. REMAIN
ADDED TIES AS SHOWN 6-7-06
3-NEW TIES, 6-7-06 JG-SS

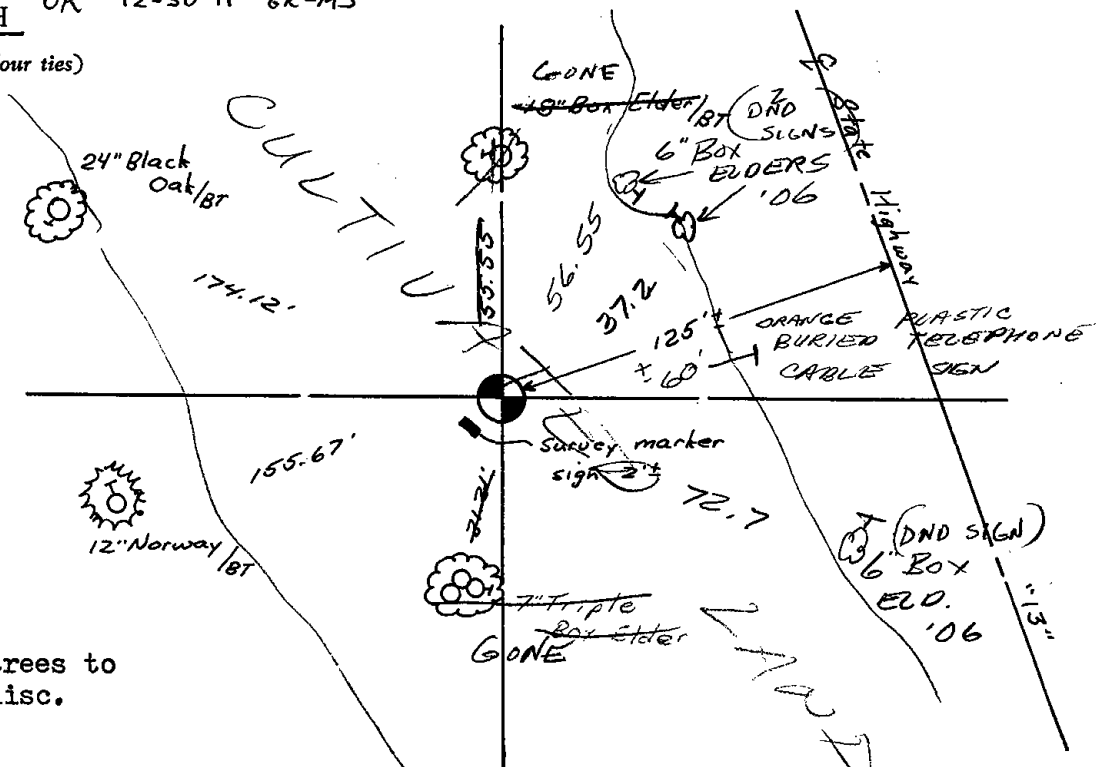
CERTIFIED CORRECT:

Dale C. Hagen
Registered Land Surveyor

DATE: December 2, 1975

TIE SKETCH OK 12-30-11 GR-MS

(Show at least four ties)



NOTE:
Ties in trees to
nail in disc.