

19
SECTION

15
TOWN

06
RANGE

ADAMS COUNTY

COUNTY CORNER NO: 82

ROMPORTOL ID: 41506190020

PUBLIC LAND SURVEY MONUMENT RECORD

TYPE OF MONUMENT: HARRISON
ADAMS COUNTY COORDINATES, NAD 83 (2007)

N. 143473.603

E. 528608.900

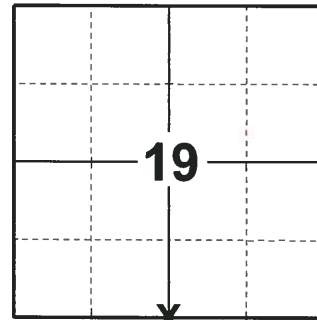
ELEVATION- DATUM

FIELD WORK DATE: 07/11/2018

BASIS FOR MONUMENT LOCATION

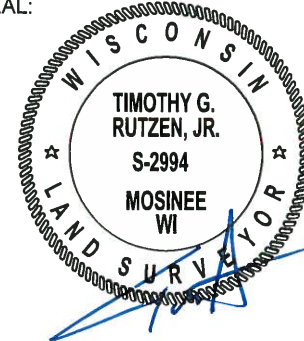
1975 - PLS 1103 RAN EDM/TRANSIT TRAVERSE AROUND SECTIONS 19 AND 30 TO DETERMINE SEARCH AREAS FOR CORNERS. FOUND NO EVIDENCE OF THE ORIGINAL CORNER OR ANY REMONUMENTATION. CALCULATED THE CORNER POSITION BY SINGLE PROPORTIONATE MEASUREMENT AND ON LINE BETWEEN THE SOUTHEAST AND SOUTHWEST CORNERS OF SECTION 19. SET HARRISON AND TIED OUT.

2018 - PLS 2994 FOUND A HARRISON MONUMENT FLUSH WITH THE GROUND SURFACE. FOUND NO EVIDENCE OF ANY OF THE EXISTING TIES OR WITNESSES. VERIFIED THE CORNER TO BE ON LINE WITH THE SE AND SW CORNERS BUT IS 55'± EAST FROM BEING EQUIDISTANT. ACCEPTED THE HARRISON MONUMENT AS THE BEST EVIDENCE OF THE CORNER LOCATION. SET 4 NEW TIES AND MEASURED TO THE TIES.



LOCATION
(INDICATE CORNER BY "X")

SEAL:

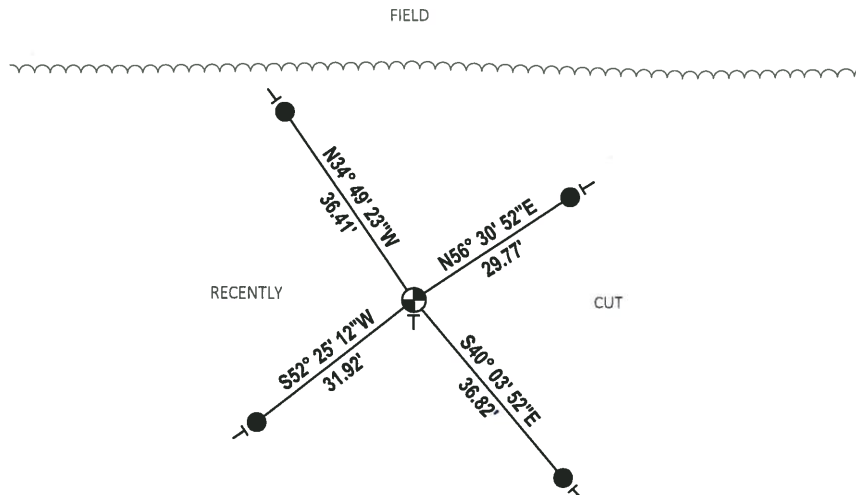
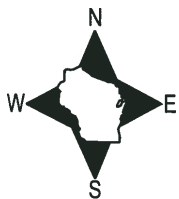


DATA SHOWN HERE ON THIS TIE SHEET IS CORRECT AND COMPLETE TO THE BEST OF MY KNOWLEDGE AND BELIEF.

PROFESSIONAL LAND SURVEYOR

DATE 8-10-18

TIE SKETCH



● SET 3/4" x 18" IRON REBAR, 1.50#/FT

⊕ FOUND HARRISON MONUMENT

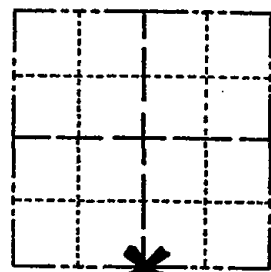
⊥ VINYL "T" POST

ADAMS COUNTY

Survey Monument Record

TYPE OF MONUMENT: Standard Harrison
STATE PLANE COORDINATES: N
E
ELEVATION - M.S.L. DATUM:
THETA ANGLE:
FIELD BOOK: PAGE

CORNER NO. 839
SECTION 19
TOWN 15
RANGE 6



LOCATION (Indicated by 'X')

SEAL:



BASIS FOR MONUMENT LOCATION

(Use reverse side if necessary)

Show info such as: History of corner, with reference to Vol. and pg, dates, surveyor; exact description of monument replaced; if location computed, by taped or EDM traverse; landowner remarks, etc.

Ran EDM/transit traverse around Sections 19 and 30 to determine search areas for corners.

Could find no evidence of the original corner or any remonumentation.

Set corner by single proportional measure and on line between the Southeast and Southwest corners of Section 19.

CORNER O.K. 10-14-76 JS-SS
'' '' 2-5-86 GR
All DK 3-18-91 JG
OK, - 1-17-96 JG-SS
OK, 12-21-11 ML

CERTIFIED CORRECT:

Dale C. Hagen
Registered Land Surveyor

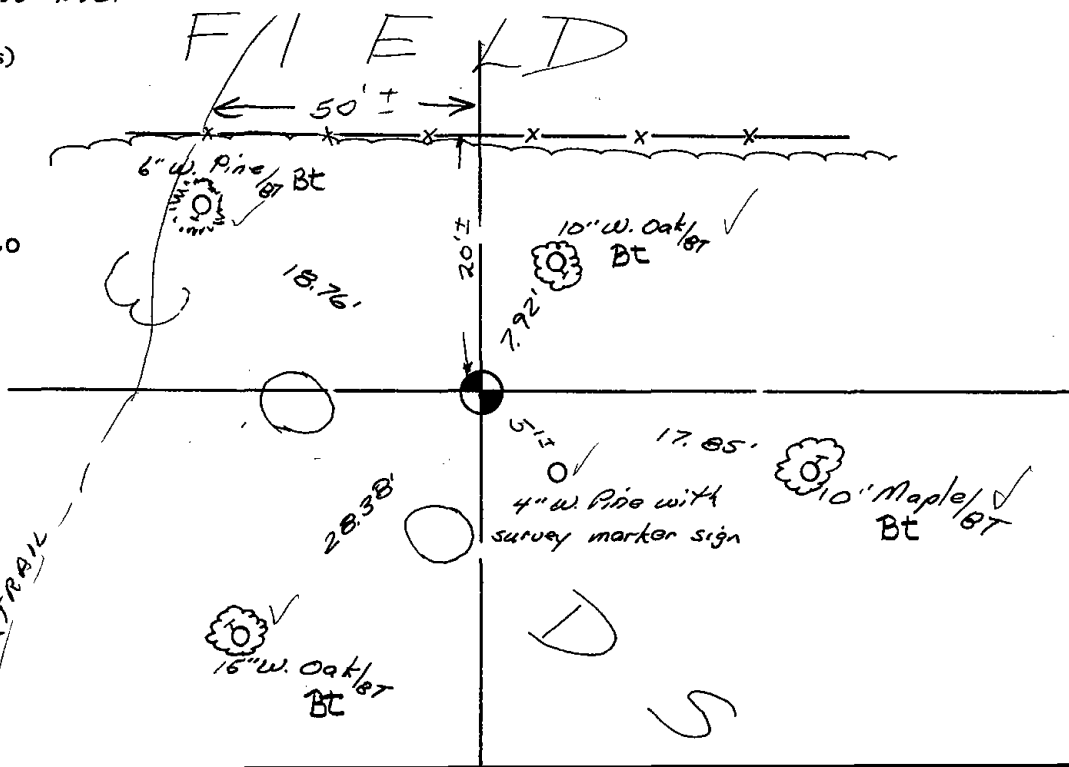
DATE: December 2, 1975

NOTE: THIS PAUS OPPOSITE EDGE OF FIELD.

TIE SKETCH

400' NORTH

(Show at least four ties)



NOTE:

Ties in trees to nail in disc.

