

PUBLIC LAND SURVEY MONUMENT RECORD

TYPE OF MONUMENT: HARRISON
 ADAMS COUNTY COORDINATES, NAD 83 (2007)

N. 143495.819

E. 533892.848

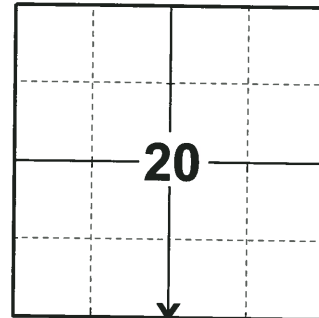
ELEVATION- _____ DATUM _____

FIELD WORK DATE: 07/11/2018

BASIS FOR MONUMENT LOCATION

1974 - PLS 1103 RAN EDM/TRANSIT TRAVERSE AROUND SECTIONS 20 AND 29 TO DETERMINE SEARCH AREAS FOR THE CORNERS. FOUND AN ANCIENT 1" BY 30" IRON PIPE WITHIN THE SEARCH AREA AT FENCE CORNER. ACCEPTED THIS AS THE CORNER LOCATION. REMONUMENTED WITH A STANDARD HARRISON MONUMENT AND TIED OUT.

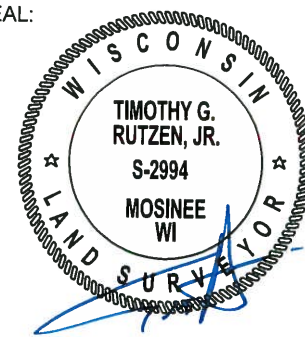
2018 - PLS 2994 FOUND A HARRISON MONUMENT 2" ABOVE THE GROUND SURFACE. FOUND NO EVIDENCE OF ANY OF THE TIES OR WITNESSES. ACCEPTED THE HARRISON MONUMENT AS THE BEST EVIDENCE OF THE CORNER LOCATION. SET 4 NEW TIES AND MEASURED TO THE TIES.



LOCATION

(INDICATE CORNER BY "X")

SEAL:

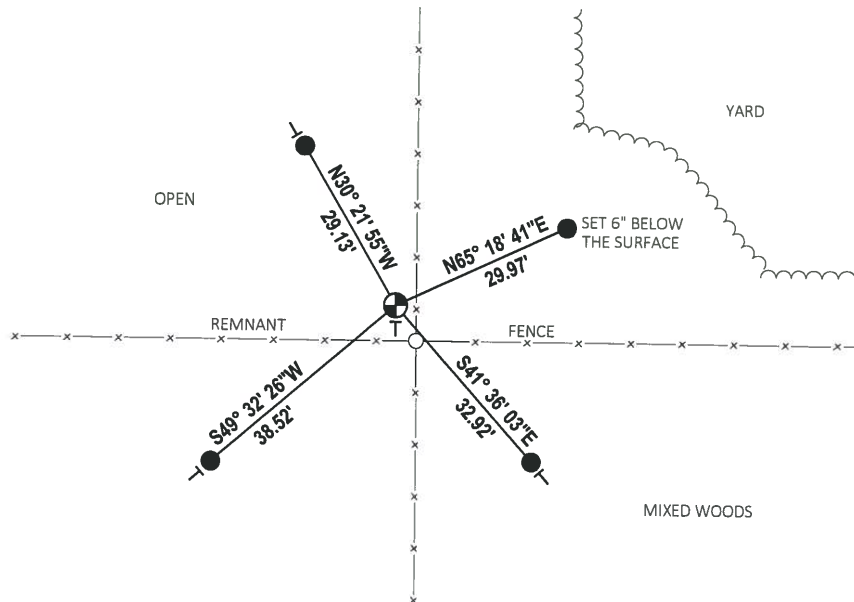


DATA SHOWN HERE ON THIS TIE SHEET IS CORRECT AND COMPLETE TO THE BEST OF MY KNOWLEDGE AND BELIEF.

PROFESSIONAL LAND SURVEYOR

DATE 8-10-18

TIE SKETCH



- SET 3/4" x 18" IRON REBAR, 1.50#/FT
- ⊕ FOUND HARRISON MONUMENT
- 12" WOODEN FENCE POST W/DND SIGN
- ⊥ VINYL "T" POST

ADAMS COUNTY

Survey Monument Record

TYPE OF MONUMENT: Standard Harrison Monument

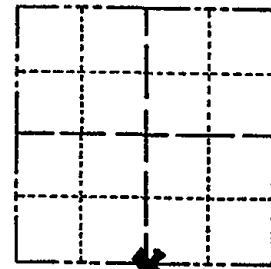
STATE PLANE COORDINATES: N _____
E _____

ELEVATION — M.S.L. DATUM: _____

THETA ANGLE: _____

FIELD BOOK: _____ PAGE _____

CORNER NO. 619
SECTION 20
TOWN 15
RANGE 6



LOCATION
(Indicated by 'X')

SEAL:

BASIS FOR MONUMENT LOCATION

(Use reverse side if necessary)

Show info such as: History of corner, with reference to Vol. and pg. dates, surveyor; exact description of monument replaced; if location computed, by taped or EDM traverse; landowner remarks, etc.

Ran EDM/transit traverse around Sections 20 and 29 to determine search areas for the corners.

Found ancient 1" by 30" iron pipe within search area at fence intersection.

Accepted same as corner and remonumented with Standard Harrison Monument.

MAINTENANCE RECORD

Date	Init.	Remarks
11-10-81	TH-DW	MON & TIES O.K.
3-4-86	SS	" " O.K.
4-30-90	KEN CARLSON	OK
2-12-91	SS-JG	ALL OK
1-17-96	JG-SS	OK
2-12-01	JG-MH	1-GONE, 1-NEW 5-26-06 OK SJS



CERTIFIED CORRECT:

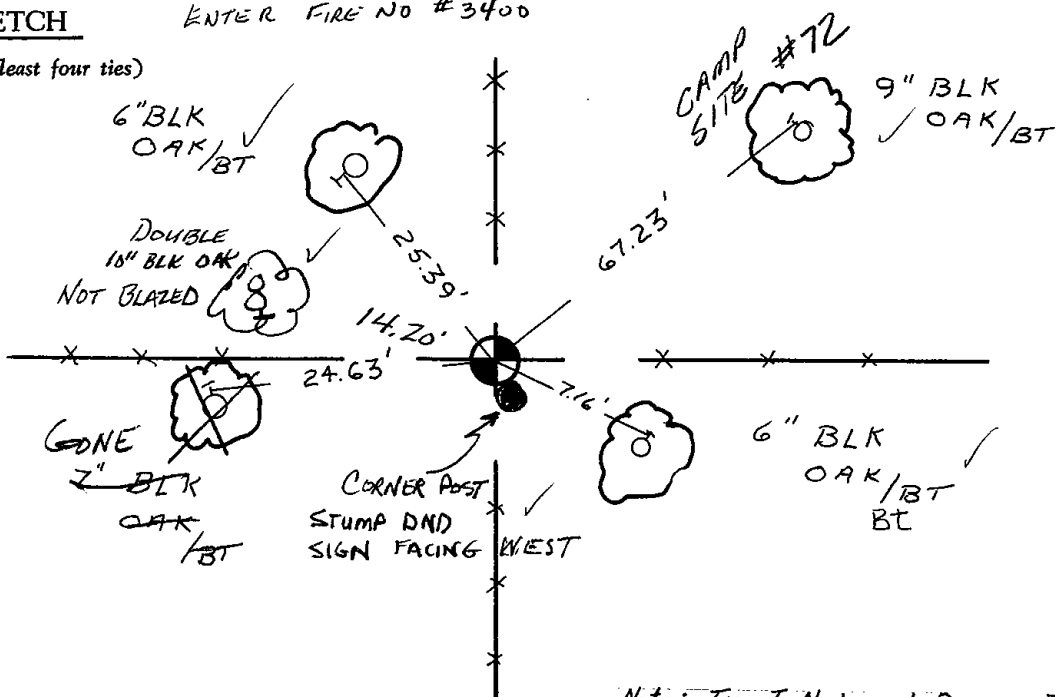
Dale C. Hagen
Registered Land Surveyor

DATE: 12-30-74

TIE SKETCH

ENTER FIRE NO #3400

(Show at least four ties)



Note: Ties To Nail and Disc in Trees