

PUBLIC LAND SURVEY MONUMENT RECORD

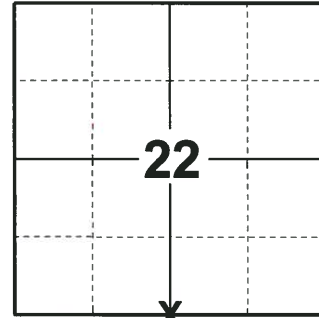
TYPE OF MONUMENT: HARRISON
 ADAMS COUNTY COORDINATES, NAD 83 (2007)

N. 143517.406

E. 544420.000

ELEVATION- DATUM

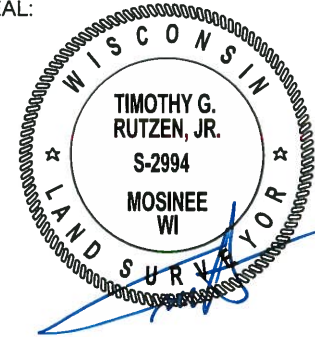
FIELD WORK DATE: 07/03/2018



LOCATION

(INDICATE CORNER BY "X")

SEAL:



DATA SHOWN HERE ON THIS TIE SHEET IS CORRECT AND COMPLETE TO THE BEST OF MY KNOWLEDGE AND BELIEF.

PROFESSIONAL LAND SURVEYOR

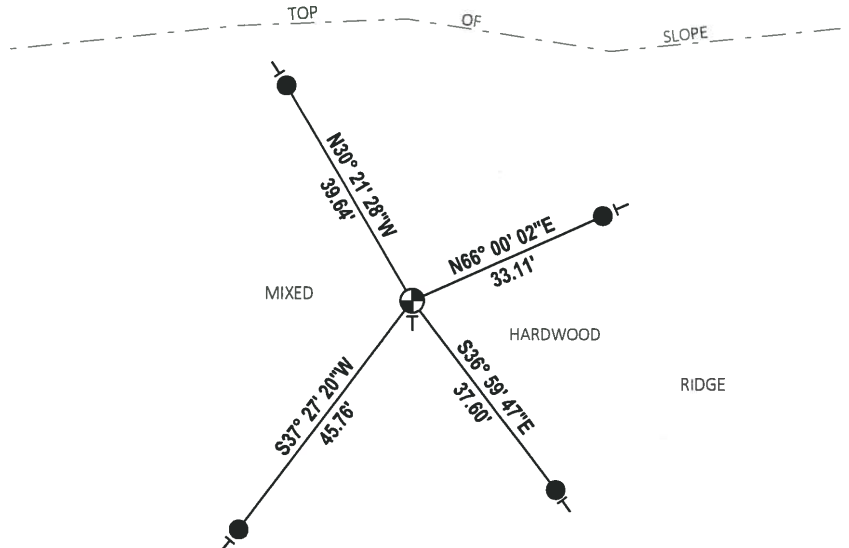
DATE 8-10-18

BASIS FOR MONUMENT LOCATION

1980 - PLS 878 NO RECORD OF ANY RESURVEYS. CORNER WAS CALCULATED ON LINE AND EQUIDISTANT BETWEEN SECTION CORNERS. COULD NOT SET HARRISON MONUMENT AT THIS TIME AS THE CORNER FALLS ON A LARGE STUMP. SET A RAILROAD SPIKE AND TIED OUT.

2018 - PLS 2994 FOUND A HARRISON MONUMENT 6" ABOVE THE GROUND SURFACE. HARRISON WAS SET TO REPLACE RR SPIKE BETWEEN 2006 - 2011 AS NOTED IN PRIOR TIE SHEET. FOUND NO EVIDENCE OF ANY OF THE EXISTING TIES OR WITNESSES. VERIFIED THE CORNER TO BE ON LINE AND EQUIDISTANT WITH THE SE AND SW CORNERS. ACCEPTED THE HARRISON MONUMENT AS THE BEST EVIDENCE OF THE CORNER LOCATION. SET 4 NEW TIES AND MEASURED TO THE TIES.

TIE SKETCH

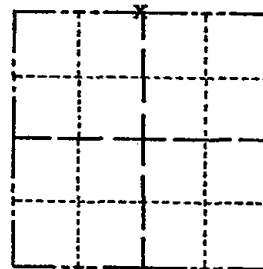


- SET 3/4" x 18" IRON REBAR, 1.50#/FT
- ⊕ FOUND HARRISON MONUMENT
- ┆ VINYL "T" POST

Government Land Corner Certificate

Adams County
 TYPE OF MONUMENT: ~~Railroad Spike in Stump~~ *Harrison Mon.*
 STATE PLANE COORDINATES: N _____
 E _____
 ELEVATION — M.S.L. DATUM: _____
 THETA ANGLE: _____
 FIELD BOOK: None PAGE None
 DRAWN BY: L.W.Scott

CORNER NO. 88
 SECTION 27
 TOWN 15
 RANGE 6



LOCATION
(Indicated by 'X')

SEAL:



DATA SHOWN HERE ON
CERTIFIED CORRECT:

Anthony B. Kiedrowski
Registered Land Surveyor

DATE: 8/5/80

BASIS FOR MONUMENT LOCATION

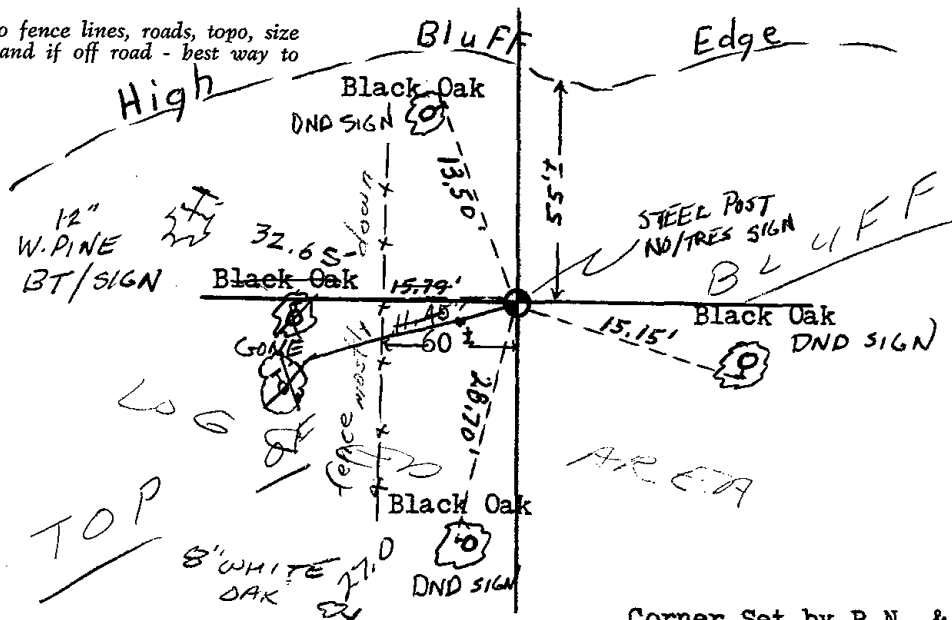
Show info such as: History of corner, with reference to Vol. and pg., dates, surveyor; exact description of monument replaced; if location computed, by taped or EDM traverse; landowner remarks, etc. (Use reverse side if necessary)

No record of any resurveys. Corner is set on line equidistant between section corners.

Could not set a Harrison monument at this time as corner falls on large stump. Set railroad spike.

TIE SKETCH

Show at least four ties, also fence lines, roads, topo, size and type of witness trees' and if off road - best way to arrive at corner.



Nail in witnessed trees

Corner Set by R.N. & S.K.
7/11/80

