

## PUBLIC LAND SURVEY MONUMENT RECORD

TYPE OF MONUMENT: HARRISON (BROKEN-TOP)  
 ADAMS COUNTY COORDINATES, NAD 83 (2007)

N. 143592.138

E. 547046.302

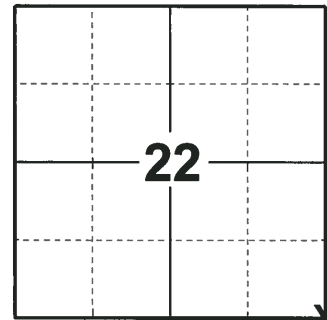
ELEVATION- - - - DATUM - - - -

FIELD WORK DATE: 07/03/2018

### BASIS FOR MONUMENT LOCATION

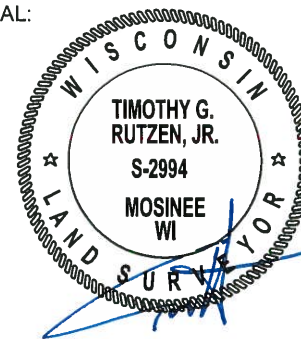
2014 - PLS 2443 THE LAST TIE SHEET ON FILE FOR THIS CORNER IS DATED DECEMBER 27, 1973 BY ANTHONY B. KIEDROWSKI, R.L.S. 878. HE STATES THAT HE PLACED A 30" HARRISON MONUMENT AT THE CORNER AT A LOCATION THAT DIFFERED FROM THE CORNER PLACED IN 1971 BY THE COUNTY SURVEYOR. NUMEROUS NOTATIONS BY OTHER SURVEYORS ALSO APPEAR ON THE TIE SHEET. FOUND THE STANDARD HARRISON CAST IRON MONUMENT AS STATED BY KIEDROWSKI AND ESTABLISHED REFERENCE TIES TO PERPETUATE THE CORNER LOCATION.

2018 - PLS 2994 FOUND A HARRISON MONUMENT WITH A BROKEN-TOP 12" BELOW THE GROUND SURFACE AND 3 TIES. THE MONUMENT AGREES WITH THE EXISTING TIES. ACCEPTED THE HARRISON MONUMENT WITH A BROKEN-TOP AS THE CORNER LOCATION. SET 1 NEW TIE AND MEASURED TO THE TIES.



**LOCATION**  
 (INDICATE CORNER BY "X")

SEAL:



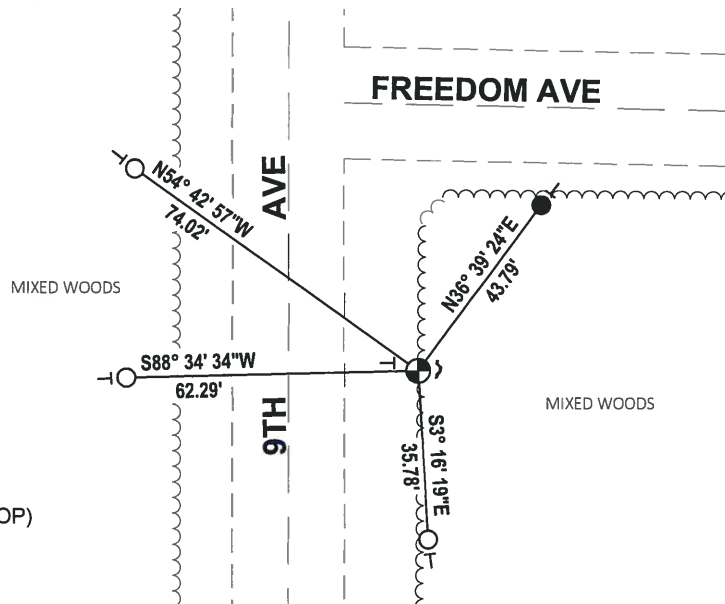
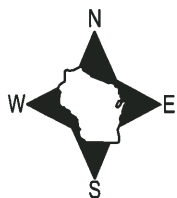
DATA SHOWN HERE ON THIS TIE SHEET IS CORRECT AND COMPLETE TO THE BEST OF MY KNOWLEDGE AND BELIEF.

PROFESSIONAL LAND SURVEYOR

DATE 8-10-18

### TIE SKETCH

NOTE: THE CORNER FALLS 28± EAST OF THE CENTERLINE OF 9TH AVE AND 56± SOUTH OF THE CENTERLINE OF FREEDOM AVE.



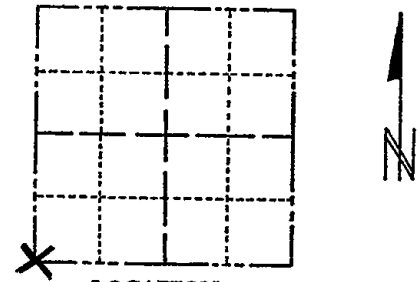
- SET 3/4" x 18" IRON REBAR, 1.50#/FT
- FOUND 3/4" IRON ROD
- ⊕ FOUND HARRISON MONUMENT (BROKEN-TOP)
- ↗ STEEL FENCE POST
- ⊥ VINYL "T" POST

ADAMS COUNTY

Survey Monument Record

TYPE OF MONUMENT: FO HARRISON  
STATE PLANE COORDINATES: N \_\_\_\_\_  
E \_\_\_\_\_  
ELEVATION — M.S.L. DATUM: \_\_\_\_\_  
THETA ANGLE: \_\_\_\_\_  
FIELD BOOK: 109 PAGE 52

CORNER NO. 85  
SECTION 23  
TOWN 15  
RANGE 6



LOCATION  
(Indicated by 'X')

SEAL:

BASIS FOR MONUMENT LOCATION

(Use reverse side if necessary)

Show info such as: History of corner, with reference to Vol. and pg, dates, surveyor; exact description of monument replaced; if location computed, by taped or EDM traverse; landowner remarks, etc.

This corner monumented by Co. Surveyor Mullen in 1971 but was disputed. The road intersection was entirely excavated with a backhoe but nothing was found. This area was in a road cut, so if anything was there, it was probably destroyed. However, analyzing an extensive traverse of all four sections around this corner, and using a record dimension by Barrett in Vol. 2, page 195 of old field notes, put this corner somewhat southeast of the road intersection. Harrison set by Mullen removed and replaced by a 2" pipe.



CERTIFIED CORRECT:

*Anthony B. Kiedrowski*

Registered Land Surveyor

DATE: 12/27/13

CORNER O.K. 10-13-76 JS-SS  
A.L.H. OK 1-31-91 KZ-JG  
OK 1-16-96 JG-SS

TIE SKETCH

(Show at least four ties)

