

## PUBLIC LAND SURVEY MONUMENT RECORD

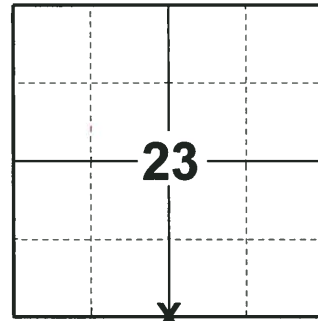
TYPE OF MONUMENT: HARRISON  
ADAMS COUNTY COORDINATES, NAD 83 (2007)

N. 143568.252

E. 549688.313

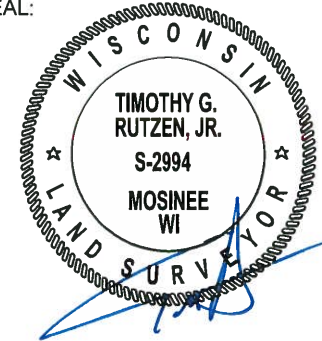
ELEVATION-        DATUM       

FIELD WORK DATE: 07/02/2018



**LOCATION**  
(INDICATE CORNER BY "X")

SEAL:



DATA SHOWN HERE ON THIS TIE SHEET IS CORRECT AND COMPLETE TO THE BEST OF MY KNOWLEDGE AND BELIEF.

PROFESSIONAL LAND SURVEYOR

DATE 8-10-18

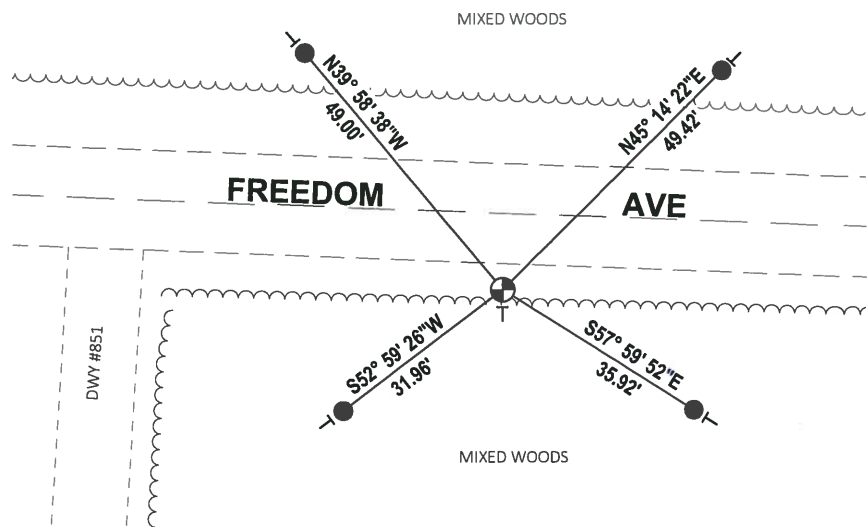
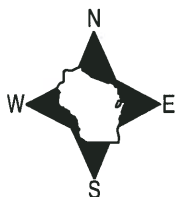
### BASIS FOR MONUMENT LOCATION

1973 - PLS 878 THIS CORNER WAS MONUMENTED BY CO. SURVEYOR MULLEN IN 1971, BUT WAS DISPUTED. AFTER AN EXTENSIVE TRAVERSE INCLUDING SECTIONS NORTH AND SOUTH OF HERE, IT WAS CONCLUDED TO PUT THIS CORNER ON A STRAIGHT LINE AND EQUIDISTANT BETWEEN THE STONE FOUND AT THE SE CORNER AND THE PREVIOUSLY RE-ESTABLISHED SW CORNER OF SECTION 23. AFTER SETTING THE CORNER WE DISCOVERED REMNANTS OF AN OLD FENCE TO THE SOUTH, THIS ADDING CREDENCE TO THIS LOCATION. WE LATER RAN THE WEST LINE OF THE SOUTHEAST QUARTER OF THIS SECTION AND AGAIN FOUND REMNANTS OF A FENCE ON LINE. THE ROADWAY OF FREEDOM LN. WAS EXCAVATED BY BACKHOE, NOTHING WAS FOUND. THE HARRISON THAT WAS SET BY MULLEN WAS REMOVED AND REPLACED WITH A 2" PIPE. SET NEW HARRISON AND TIED OUT.

2018 - PLS 2994 FOUND A HARRISON MONUMENT FLUSH WITH THE GROUND SURFACE. FOUND NO EVIDENCE OF ANY OF THE TIES OR WITNESSES. VERIFIED THE CORNER TO BE ON LINE AND EQUIDISTANT WITH THE SE AND SW CORNERS. ACCEPTED THE HARRISON MONUMENT AS THE BEST EVIDENCE OF THE CORNER LOCATION. SET 4 NEW TIES AND MEASURED TO THE TIES.

### TIE SKETCH

NOTE: THE CORNER FALLS 12'± SOUTH OF THE CENTERLINE OF FREEDOM AVE AND 64'± EAST OF THE CENTERLINE OF DWY #851.



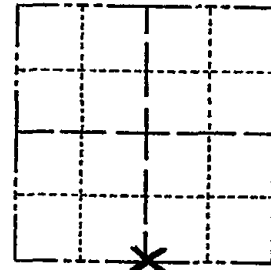
- SET 3/4" x 18" IRON REBAR, 1.50#/FT
- ⊕ FOUND HARRISON MONUMENT
- VINYL "T" POST

ADAMS COUNTY

Survey Monument Record

TYPE OF MONUMENT: 30" HARRISON
STATE PLANE COORDINATES: N
E
ELEVATION - M.S.L. DATUM:
THETA ANGLE:
FIELD BOOK: 109 PAGE 51

CORNER NO. 89
SECTION 23
TOWN 15
RANGE 6



LOCATION (Indicated by 'X')

SEAL:

BASIS FOR MONUMENT LOCATION

(Use reverse side if necessary)

Show info such as: History of corner, with reference to Vol. and pg, dates, surveyor; exact description of monument replaced; if location computed, by taped or EDM traverse; landowner remarks, etc.

This corner monumented by Co. Surveyor Mullen in 1971., but was disputed. After an extensive traverse including sections north and south of here, it was concluded to put this corner on a straight line equidistant between the stone found at the SE corner and the previously re-established SW corner of section 23. After setting the corner we discovered remnants of an old fence to the south, adding credence to this location. We later ran the west line of the southeast quarter of this section and again found remnants of a fence on line. The roadway area of Freedom Ln. was excavated by backhoe, nothing found. Harrison by Mullen removed and replaced with a 2" pipe.



CERTIFIED CORRECT:

Handwritten signature of Anthony B. Kiedrowski, Registered Land Surveyor.

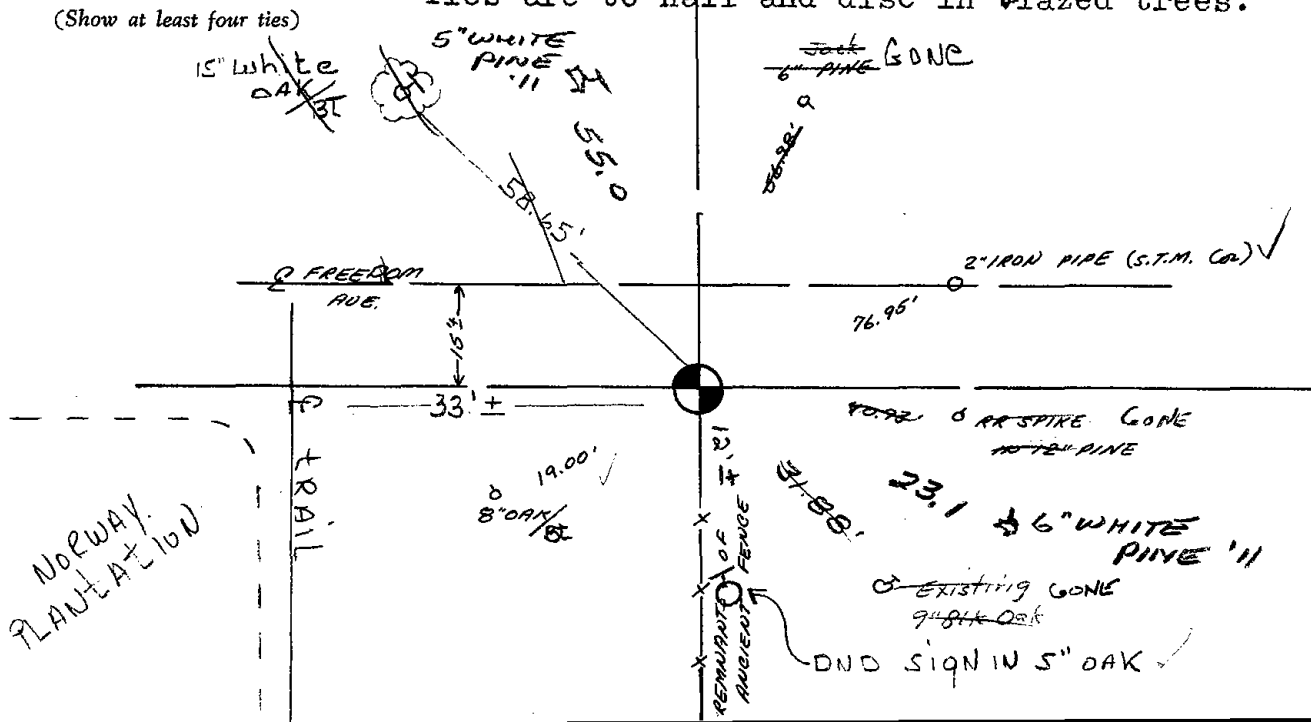
DATE: 12/27/73

CORNER O.K. 10-13-76 JS-SL

TIE SKETCH

(Show at least four ties)

Ties are to nail and disc in blazed trees.



4-15-11 MON OK 2 NEW TIES SS

MAINTENANCE RECORD

Date	Init.	Remarks
11-10-81	TH-DW	MON. O.K.
1-16-86	GR-SS	" "
1-31-91	KZ-JG	ALL OK
1-16-96	JG-SS	OK
2-1-01	MS-MH	ALL OK
4-28-06	JG	2-GONE, 4-LEFT