

PUBLIC LAND SURVEY MONUMENT RECORD

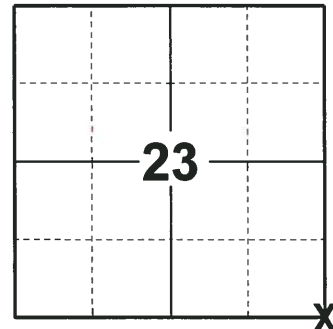
TYPE OF MONUMENT: HARRISON
 ADAMS COUNTY COORDINATES, NAD 83 (2007)

N. 143542.238

E. 552331.225

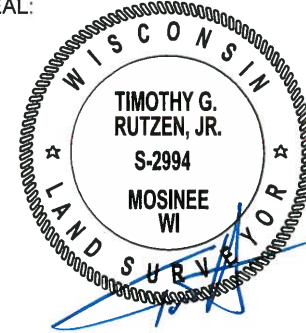
ELEVATION- DATUM

FIELD WORK DATE: 07/02/2018



LOCATION
 (INDICATE CORNER BY "X")

SEAL:



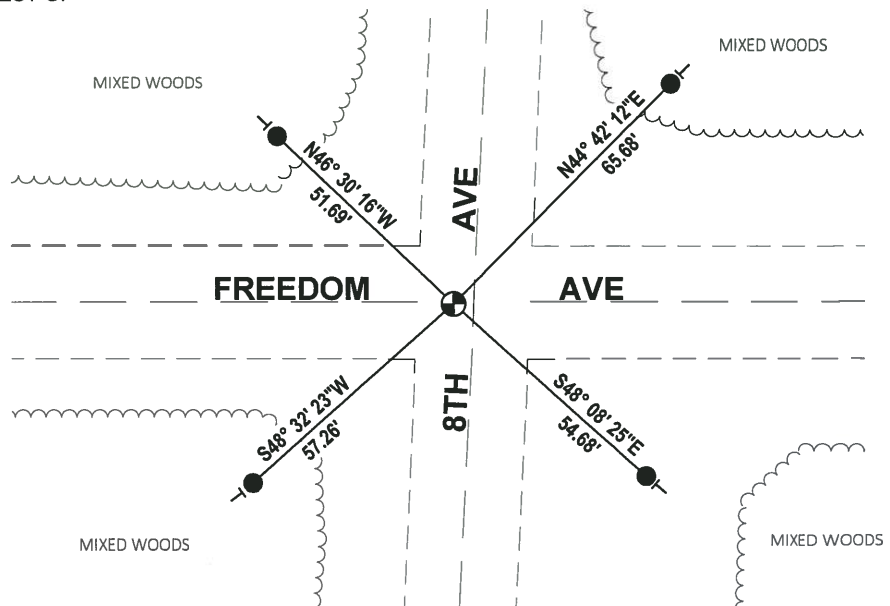
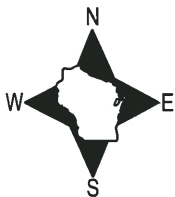
DATA SHOWN HERE ON THIS TIE SHEET IS CORRECT AND COMPLETE TO THE BEST OF MY KNOWLEDGE AND BELIEF.

PROFESSIONAL LAND SURVEYOR

DATE 8-10-18

- TIE SKETCH

NOTE: THE CORNER FALLS 0.5± SOUTH OF THE CENTERLINE OF FREEDOM AVE AND 4± WEST OF THE CENTERLINE OF 8TH AVE.



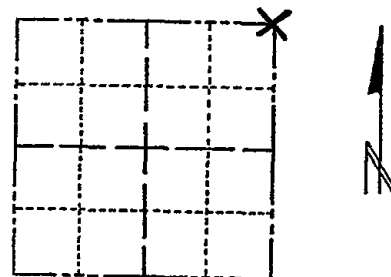
- SET 3/4" x 18" IRON REBAR, 1.50#/FT
- ⊕ FOUND HARRISON MONUMENT
- VINYL "T" POST

ADAMS COUNTY

Survey Monument Record

TYPE OF MONUMENT: 30" HARRISON
STATE PLANE COORDINATES: N
E
ELEVATION - M.S.L. DATUM:
THETA ANGLE:
FIELD BOOK: PAGE

CORNER NO. 55
SECTION 26
TOWN 15
RANGE 6



LOCATION (Indicated by 'X')

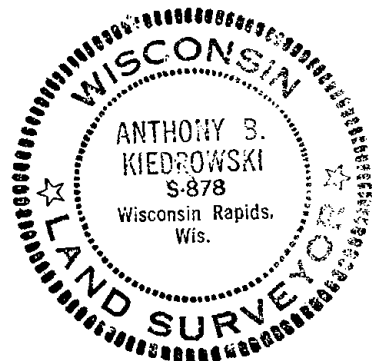


BASIS FOR MONUMENT LOCATION

(Use reverse side if necessary)

Show info such as: History of corner, with reference to Vol. and pg, dates, surveyor; exact description of monument replaced; if location computed, by taped or EDM traverse; landowner remarks, etc.

SEAL:



This corner monumented by Co. Surveyor Mullen in 1971, but was disputed. We excavated intersection with a backhoe and found an 8"x8"x12" square sandstone. This was accepted as correct after a EDM traverse of the four sections around this corner. Excavation was witnessed by Town of Springville Board. Harrison by Mullen removed and replaced with a 2" pipe.

CORNER O.K. 10-13-76 JS-SS
ALL OK 1-31-91 KZ-JG
OK 1-16-96 JG-SS
ALL OK 2-1-01 JG-MH
ALL OK 4-28-06-JG
1 NEW TIE 01-10-11 GR-SS

CERTIFIED CORRECT:

Anthony B. Kiedrowski
Registered Land Surveyor

DATE: 12/27/73

TIE SKETCH

(Show at least four ties)

