

PUBLIC LAND SURVEY MONUMENT RECORD

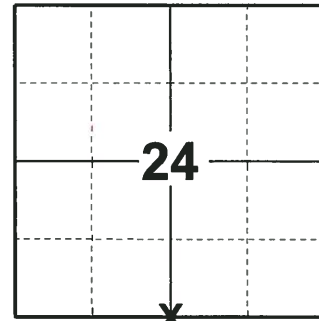
TYPE OF MONUMENT: HARRISON
 ADAMS COUNTY COORDINATES, NAD 83 (2007)

N. 143511.807

E. 555022.256

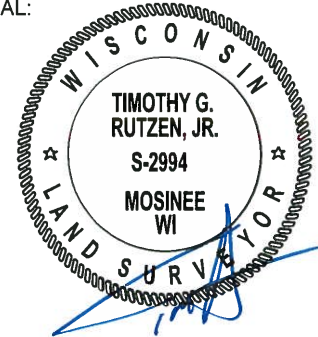
ELEVATION- _____ DATUM _____

FIELD WORK DATE: 07/02/2018



LOCATION
 (INDICATE CORNER BY "X")

SEAL:



DATA SHOWN HERE ON THIS TIE SHEET IS CORRECT AND COMPLETE TO THE BEST OF MY KNOWLEDGE AND BELIEF.

PROFESSIONAL LAND SURVEYOR

DATE 8-10-18

BASIS FOR MONUMENT LOCATION

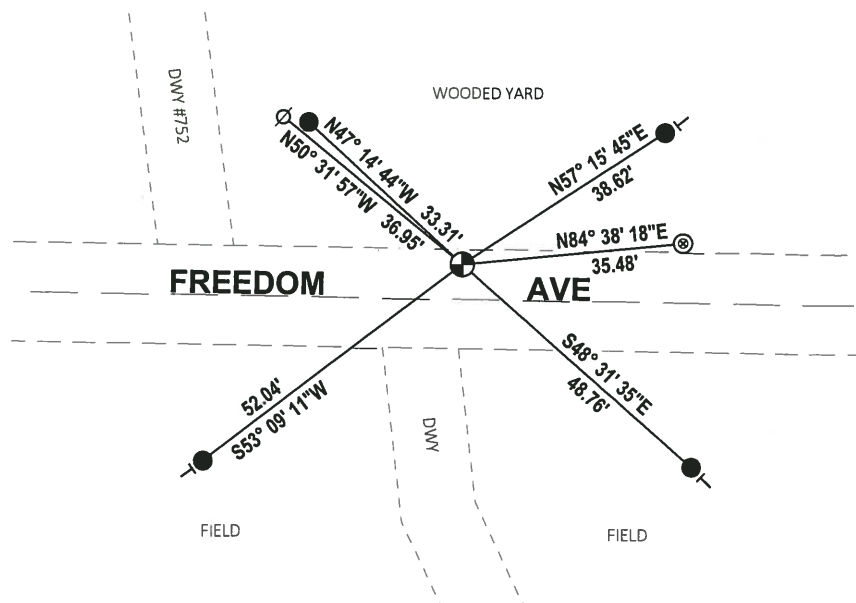
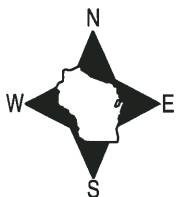
1971 - PLS 981 SET HARRISON MONUMENT AND TIED OUT.

1980 - PLS 878 EXCAVATED A LARGE AREA WITH A BACKHOE AND FOUND NOTHING. THIS CORNER WAS ORIGINALLY SET BY PREVIOUS COUNTY SURVEYOR ERRONEOUSLY 40 FEET TO THE WEST. AFTER FINDING A STONE AT THE CORNER 1/2 MILE WEST OF HERE, THIS CORNER IS NOW ESTABLISHED ON LINE AND EQUIDISTANT BETWEEN SECTION CORNERS. NO RESURVEYS ON RECORD SET A HARRISON MONUMENT AND TIED OUT.

2018 - PLS 2994 FOUND A HARRISON MONUMENT IN THE ROAD SURFACE, 1 TIE AND 1 WITNESS. THE MONUMENT AGREES WITH THE EXISTING TIE AND WITNESS. ACCEPTED THE HARRISON MONUMENT AS THE CORNER LOCATION. SET 4 NEW TIES AND MEASURED TO THE TIES AND WITNESS.

TIE SKETCH

NOTE: THE CORNER FALLS 6'± NORTH OF THE CENTERLINE OF FREEDOM AVE AND 42'± EAST OF THE CENTERLINE OF DWY #752.

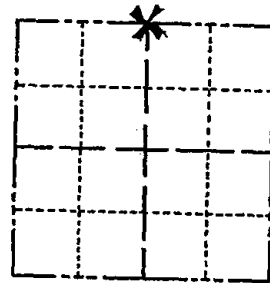


- SET 3/4" x 18" IRON REBAR, 1.50#/FT
- ⊙ FOUND 2" O.D. IRON PIPE
- ⊕ FOUND HARRISON MONUMENT
- ∅ WITNESS POWER POLE
- | VINYL "T" POST

Government Land Corner Certificate

Adams County
 TYPE OF MONUMENT: Harrison Monument
 STATE PLANE COORDINATES: N _____
 E _____
 ELEVATION — M.S.L. DATUM: _____
 THETA ANGLE: _____
 FIELD BOOK: 83 PAGE 70
 DRAWN BY: G. Rhinehart

CORNER NO. 92
 SECTION 25
 TOWN 15
 RANGE 6



LOCATION
(Indicated by 'X')

BASIS FOR MONUMENT LOCATION

Show info such as: History of corner, with reference to Vol. and pg., dates, surveyor; exact description of monument replaced; if location computed, by taped or EDM traverse; landowner remarks, etc. (Use reverse side if necessary)

Excavated large area with backhoe, found nothing. This corner was originally set by previous county surveyor erroneously 40 feet west of here. After finding stone at the corner 1/2 mile west of here, this corner is now set on line and equidistant between section corners. No resurveys on record.

MAINTENANCE RECORD

Date	Init.	Remarks
11-10-81	JH-DW	Mon. & Tie OK
1-16-86	GR-SS	" 1 TIE GONE
1-31-91	KE-JB	ALL OK
21-01	MH-JG	4 TIES LEFT 1 GONE
5-11-06	JG	ALL OK
01-10-11	GR-SS	OK

SEAL:



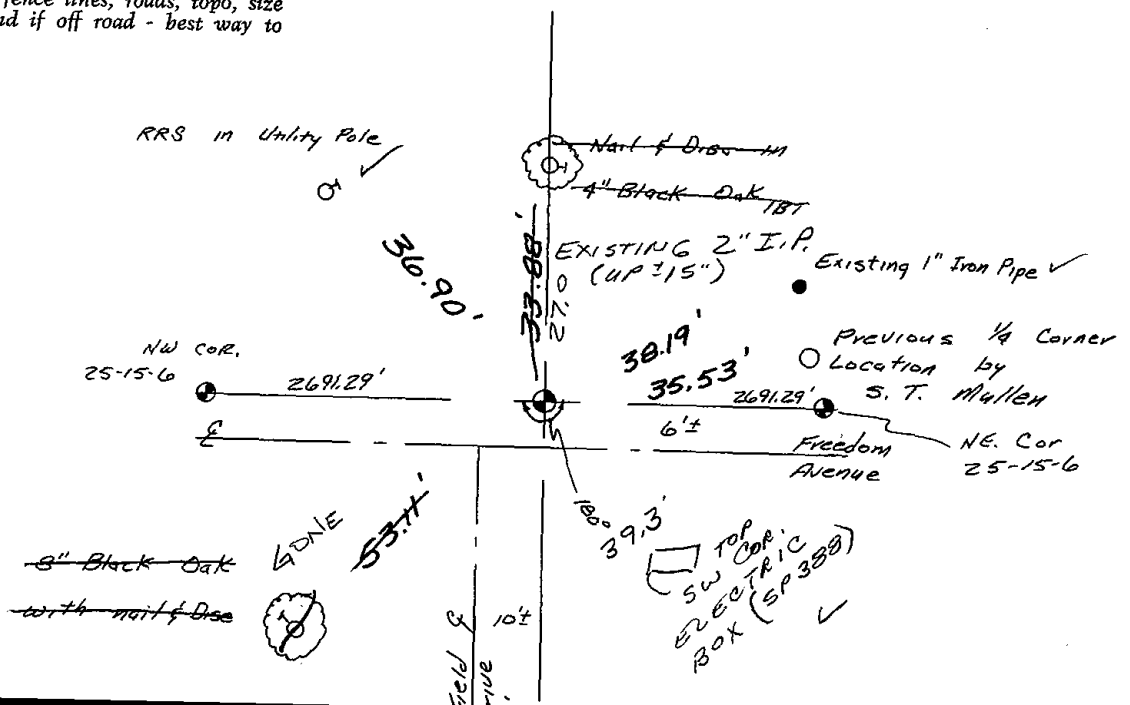
DATA SHOWN HERE ON
CERTIFIED CORRECT:

Anthony B. Kiedrowski
Registered Land Surveyor

DATE: 2/28/80

TIE SKETCH

Show at least four ties, also fence lines, roads, topo, size and type of witness trees and if off road - best way to arrive at corner.

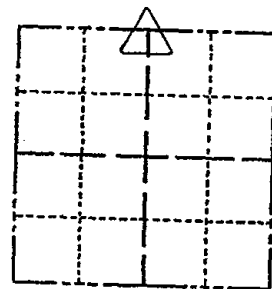


ADAMS COUNTY

Survey Monument Record

TYPE OF MONUMENT: 30" HARRISON
STATE PLANE COORDINATES: N _____
E _____
ELEVATION — M.S.L. DATUM: _____
THETA ANGLE: _____
FIELD BOOK: 104 PAGE 116

CORNER NO. 87
SECTION 25
TOWN 15
RANGE 6



LOCATION
(Indicated by 'X')

SEAL:

BASIS FOR MONUMENT LOCATION

(Use reverse side if necessary)

Show info such as: History of corner, with reference to Vol. and pg, dates, surveyor; exact description of monument replaced; if location computed, by taped or EDM traverse; landowner remarks, etc.

Set monument

December 13, 1971

Sam T. Mullen R.L.S. S-981

CORNER O.K. 10-13-76 JS-SS

** Note to
the R.M.
line*

CERTIFIED CORRECT:

Registered Land Surveyor

DATE: _____

TIE SKETCH

(Show at least four ties)

