

30
SECTION

15
TOWN

06
RANGE

ADAMS COUNTY

COUNTY CORNER NO.: 95

ROMPORTOL ID: 41506302000

PUBLIC LAND SURVEY MONUMENT RECORD

TYPE OF MONUMENT: HARRISON
ADAMS COUNTY COORDINATES, NAD 83 (2007)

N. 140853.952

E. 531254.008

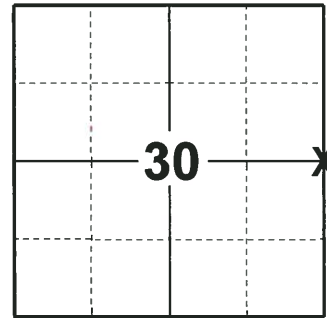
ELEVATION- DATUM

FIELD WORK DATE: 07/11/2018

BASIS FOR MONUMENT LOCATION

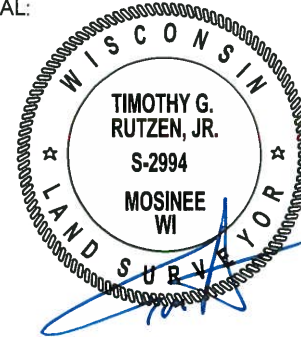
1974 - PLS 1103 RAN EDM/TRANSIT TRAVERSE OF SECTIONS 20 AND 29-15-6E TO DETERMINE SEARCH AREAS FOR CORNERS. CALCULATED THE POSITION EQUIDISTANT AND ON LINE BETWEEN ADJACENT SECTION CORNERS. THE CORNER MATCHED EXISTING EVIDENCE. SET A HARRISON MONUMENT AT THE AND TIED OUT.

2018 - PLS 2994 FOUND A HARRISON MONUMENT 2" BELOW THE GROUND SURFACE, 1 TIE AND 1 PROPERTY IRON. THE MONUMENT AGREES WITH THE EXISTING TIE. ACCEPTED THE HARRISON MONUMENT AS THE CORNER LOCATION. SET 2 NEW TIES AND MEASURED TO THE TIES AND PROPERTY IRON.



LOCATION
(INDICATE CORNER BY "X")

SEAL:



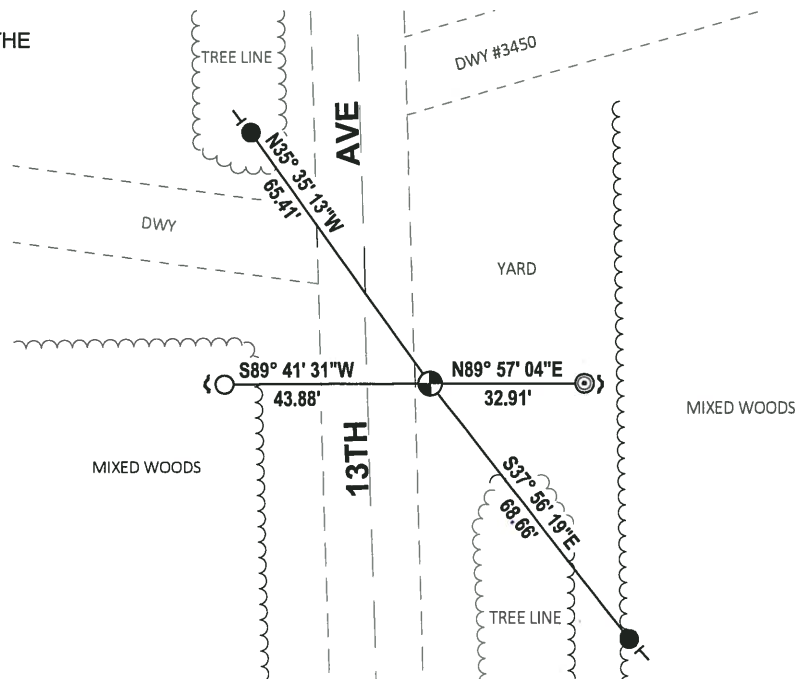
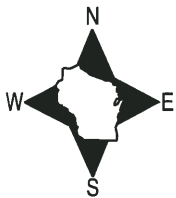
DATA SHOWN HERE ON THIS TIE SHEET IS CORRECT AND COMPLETE TO THE BEST OF MY KNOWLEDGE AND BELIEF.

PROFESSIONAL LAND SURVEYOR

DATE 8-10-18

- TIE SKETCH

NOTE: THE CORNER FALLS 13'± EAST OF THE CENTERLINE OF 13TH AVE.



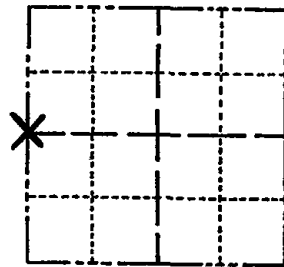
- SET 3/4" x 18" IRON REBAR, 1.50#/FT
- FOUND 3/4" IRON ROD
- ◎ FOUND 2-3/8" O.D. IRON PIPE
- ⊕ FOUND HARRISON MONUMENT
- ~ STEEL FENCE POST
- VINYL "T" POST

ADAMS COUNTY

Survey Monument Record

TYPE OF MONUMENT: 30" Harrison standard
 STATE PLANE COORDINATES: N _____
 E _____
 ELEVATION — M.S.L. DATUM: _____
 THETA ANGLE: _____
 FIELD BOOK: _____ PAGE _____

CORNER NO. 627
 SECTION 29
 TOWN 15
 RANGE 6



LOCATION
(Indicated by 'X')

SEAL:

BASIS FOR MONUMENT LOCATION

(Use reverse side if necessary)

Show info such as: History of corner, with reference to Vol. and pg. dates, surveyor; exact description of monument replaced; if location computed, by taped or EDM traverse; landowner remarks, etc.

Ran EDM/transit traverse of sections 20 and 29-15-6E to determine search area for corners in this area. this corner was set equidistant and on line between adjacent Section corners. Corner matched existing evidence.

CORNER O.K. 10-14-76 JS-SS

MAINTENANCE RECORD

Date	Ini	Remarks
10-14-81	TH-LC	MON + TIES O.K.
1-21-81	GL-SS	OK
1-31-91	KZ-JG	2-GONE, 2-NEW MON. OK
10-14-93	MC	SEE ATTACHED SHEET
1-17-96	JG-SS	2 NEW TIES
2-5-01	DA-MH	ALL OK



CERTIFIED CORRECT:

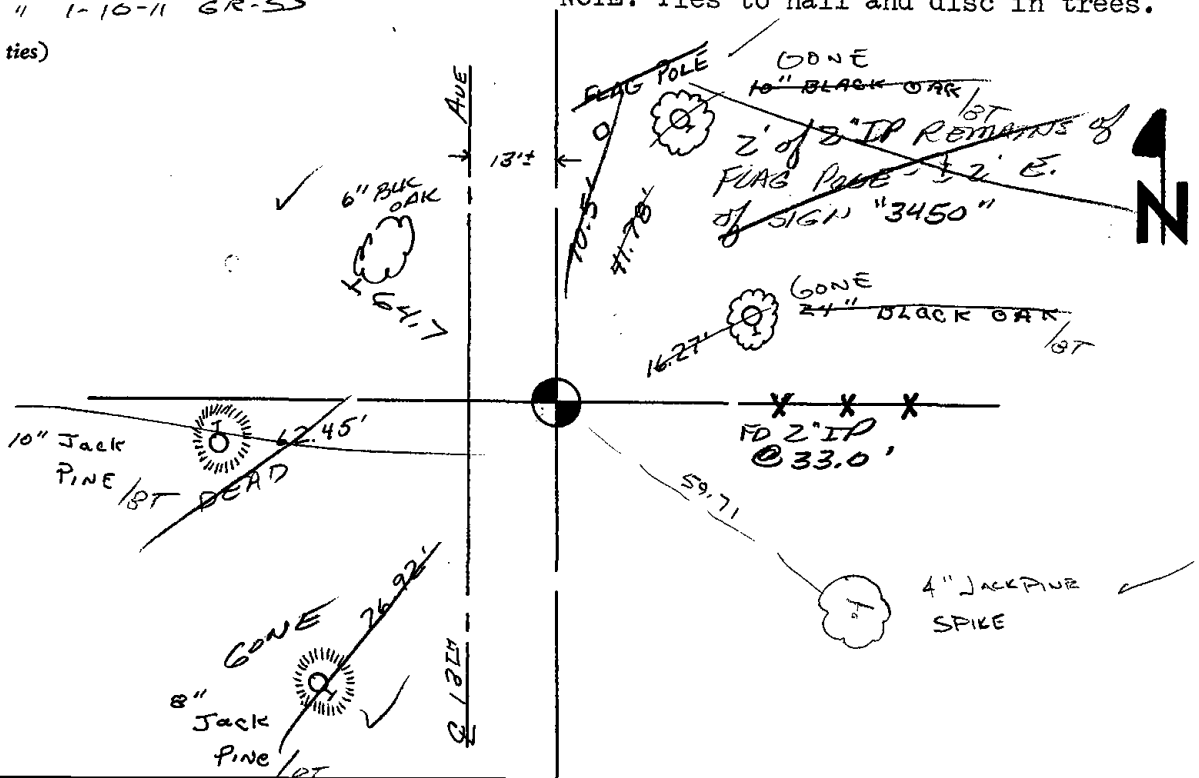
Dale C. Hagen
 Registered Land Surveyor

DATE: 12/30/74

TIE SKETCH

OK - 5-26-06 SPS
 " 1-10-11 GR-SS

(Show at least four ties)

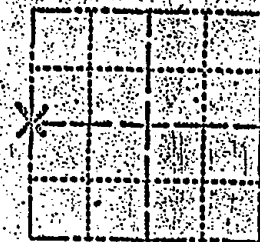


NOTE: Ties to nail and disc in trees.

Survey Monument Record

TYPE OF MONUMENT: 50" Harrison standard
 STATE PLANE COORDINATES: N _____
 ELEVATION - M.S.L. DATUM: _____
 THETA ANGLE: _____
 FIELD BOOK: _____ PAGE _____

SECTION 29
 TOWN 15
 RANGE 6



LOCATION
 (Indicated by 'X')

SEAL:



BASIS FOR MONUMENT LOCATION

(Use reverse side if necessary)
 Show info such as: History of corner, with reference to Vol. and pg. dates, surveyor; exact description of monument replaced; if location computed, by taped or EDM traverse; landowner remarks, etc.

Ran EDM/transit traverse of sections 20 and 29-15-68 to determine search area for corners in this area. this corner was set equidistant and on line between adjacent section corners. Corner matched existing evidence.

Corner set 0.1. 10-14-93 35-55

REFERENCE RECORD

12-14-93	MC	New tie

CERTIFIED CORRECT

Dale C. Hagen
 Registered Land Surveyor

DATE: 12/30/79

THE SKETCH

(Show at least four ties)

NOTE: Ties to nail and disc in trees.

