

25 SECTION 15 TOWN 06 RANGE

# ADAMS COUNTY

COUNTY CORNER NO: 100  
ROMPORTOL ID: 41506252000

## PUBLIC LAND SURVEY MONUMENT RECORD

TYPE OF MONUMENT: HARRISON  
ADAMS COUNTY COORDINATES, NAD 83 (2007)

N. 140838.789

E. 557708.688

ELEVATION-      DATUM     

FIELD WORK DATE: 09/18/2017

### BASIS FOR MONUMENT LOCATION

1972 - PLS 981 FOUND RR SPIKE AT THE CORNER LOCATION. REPLACED THE RR SPIKE WITH A 30" HARRISON MONUMENT AND RE-TIED.

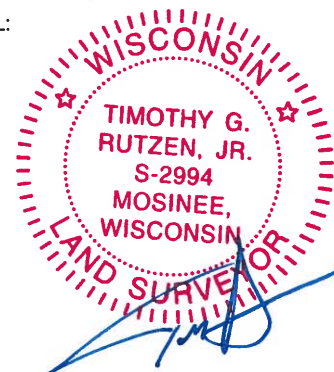
1999 - PLS 1397 EXISTING MONUMENT WAS FOUND AT THE CORNER LOCATION. MONUMENT WAS REMOVED AND RAISED DUE TO RECONSTRUCTION OF C.T.H. B. CORNER WAS RE-TIED.

2017 - PLS 2994 FOUND A HARRISON MONUMENT 6" BELOW THE ROAD SURFACE AND 1 WITNESS TREE. THE MONUMENT AGREES WITH THE EXISTING WITNESS TREE. ACCEPTED THE HARRISON MONUMENT AS THE CORNER LOCATION. SET 4 NEW TIES AND MEASURED THE TIES AND WITNESS TREE.



**LOCATION**  
(INDICATE CORNER BY "X")

SEAL:



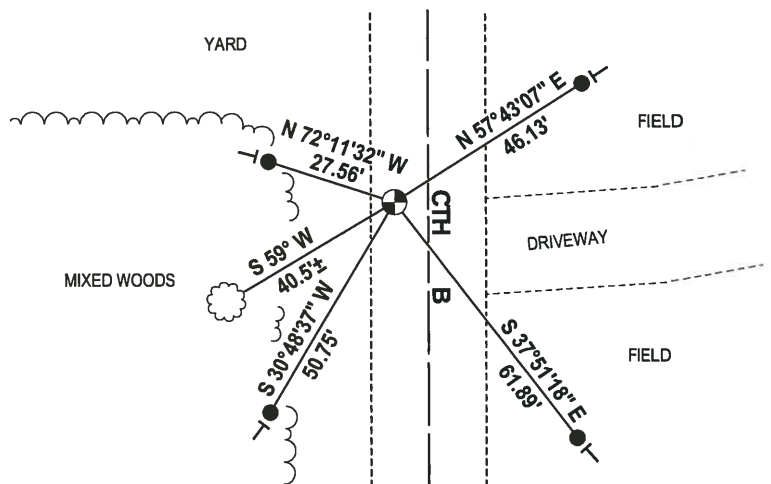
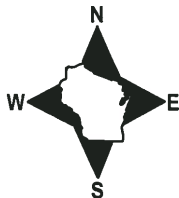
DATA SHOWN HERE ON THIS TIE SHEET IS CORRECT AND COMPLETE TO THE BEST OF MY KNOWLEDGE AND BELIEF.

PROFESSIONAL LAND SURVEYOR

DATE 11-15-17

### - TIE SKETCH -

NOTE: THE CORNER FALLS 7± WEST OF THE CENTERLINE OF CTH B.



- 3/4" x 18" IRON REBAR SET, 1.50#/FT
- ⊕ HARRISON FOUND
- └ VINYL "T" POST
- ☁ WITNESS TREE FOUND

# ADAMS COUNTY

## Survey Monument Record

TYPE OF MONUMENT: 30" HARRISON MARKER

STATE PLANE COORDINATES: N. \_\_\_\_\_

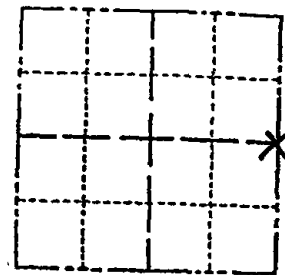
E \_\_\_\_\_

ELEVATION — M.S.L. DATUM: \_\_\_\_\_

THETA ANGLE: \_\_\_\_\_

FIELD BOOK: \_\_\_\_\_ PAGE \_\_\_\_\_

CORNER NO.	<u>112</u>
SECTION	<u>25</u>
TOWN	<u>15N</u>
RANGE	<u>6E</u>



LOCATION  
(Indicated by 'X')

SEAL:

### BASIS FOR MONUMENT LOCATION

(Use reverse side if necessary)

Show info such as: History of corner, with reference to Vol. and pg, dates, surveyor; exact description of monument replaced; if location computed, by taped or EDM traverse; landowner remarks, etc.

Existing Monument was found in place. Monument was removed and raised due to reconstruction of C.T.H. "B". All tie measurements are horizontal measurements unless noted otherwise.

2-6-01, JG - OK  
 3-13-06 JG-SS OK  
 OK 1-10-11 GR-SS



CERTIFIED CORRECT:

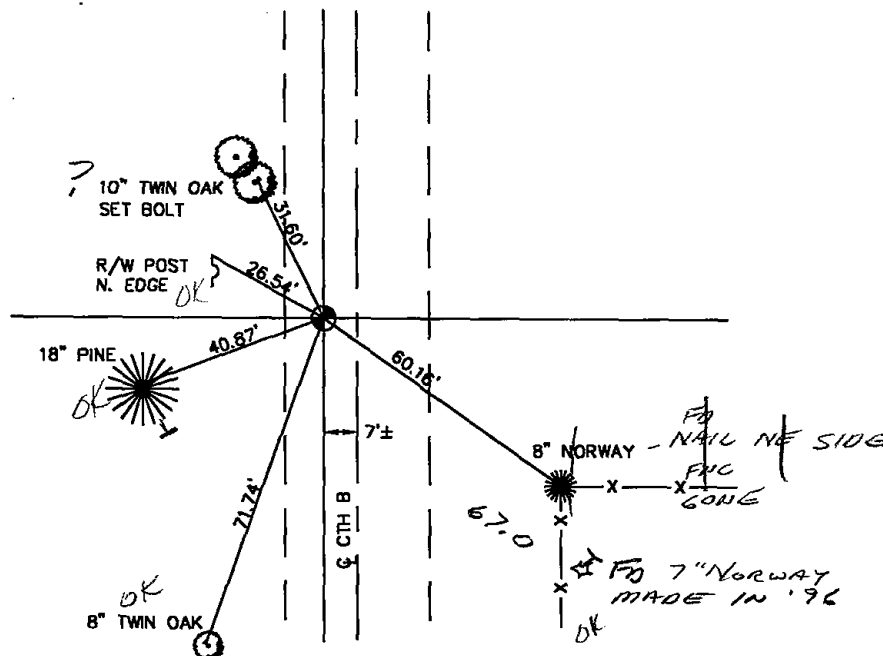
*Dennis J. Russell*  
 Registered Land Surveyor

DATE: July 26, 1999

### TIE SKETCH

(Show at least four ties)

ALL MEASUREMENTS ARE HORIZONTAL.

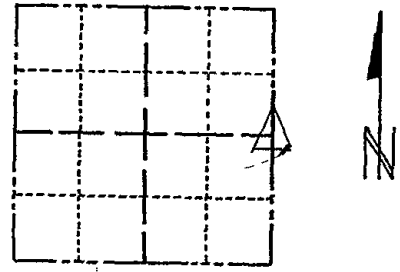


ADAMS COUNTY

Survey Monument Record

TYPE OF MONUMENT: "30" HARRISON  
STATE PLANE COORDINATES: N \_\_\_\_\_  
E \_\_\_\_\_  
ELEVATION - M.S.L. DATUM: \_\_\_\_\_  
THETA ANGLE: \_\_\_\_\_  
FIELD BOOK: 106 PAGE \_\_\_\_\_

CORNER NO. 112  
SECTION 25  
TOWN 15  
RANGE 6



LOCATION  
(Indicated by 'X')

SEAL:

BASIS FOR MONUMENT LOCATION

(Use reverse side if necessary)

Show info such as: History of corner, with reference to Vol. and pg, dates, surveyor; exact description of monument replaced; if location computed, by taped or EDM traverse; landowner remarks, etc.

Found RR spike and set monument

May 4, 1972

Sam T. Mullen R.L.S. S-981

Re Set Harrison 5-20-76 GR-55

10-22-85 K. CARLSON OK  
SEE MARK CARLSON 4-11-90 NEXT PAGE  
ALL OK 1-31-91 KE-JG  
1 GONE - IN NEW 1-16-96 JG-55

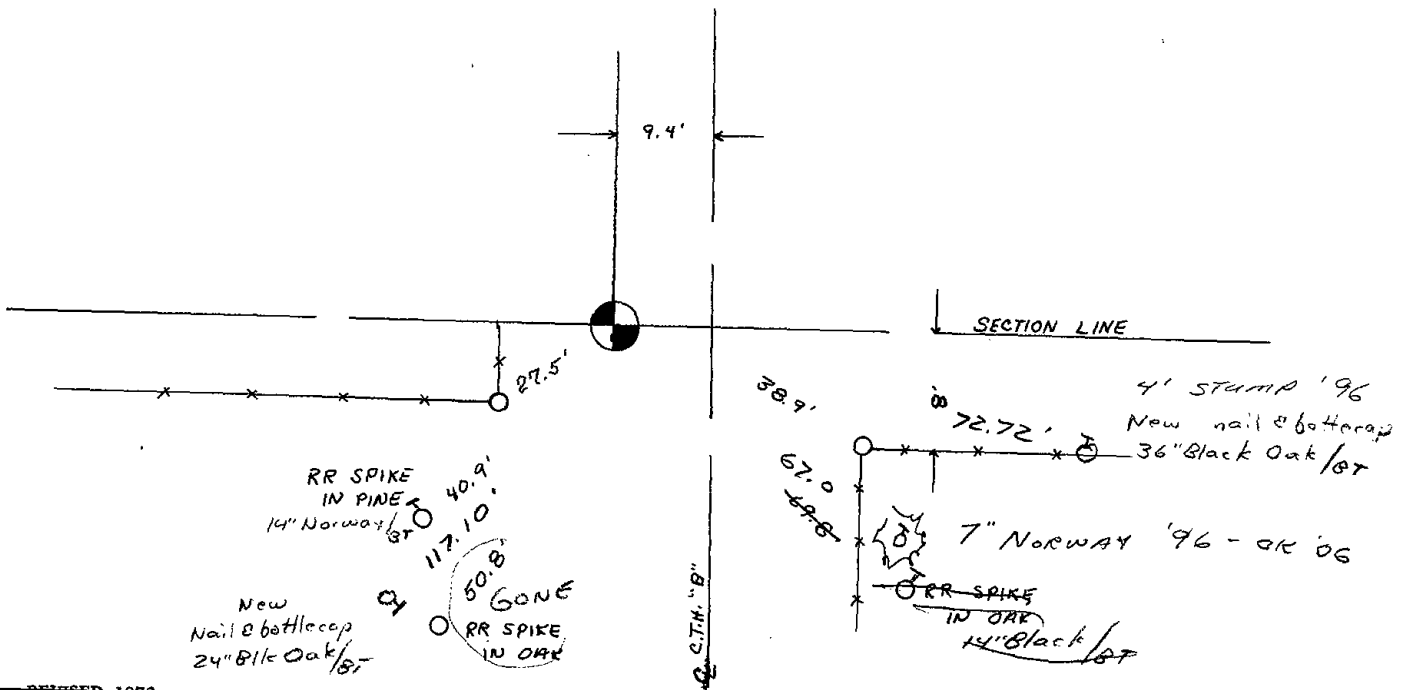
CERTIFIED CORRECT:

Registered Land Surveyor

DATE: \_\_\_\_\_

TIE SKETCH

(Show at least four ties)



# Survey Monument Record

TYPE OF MONUMENT: "30" HARRISON

STATE PLANE COORDINATES: N \_\_\_\_\_

E \_\_\_\_\_

ELEVATION — M.S.L. DATUM: \_\_\_\_\_

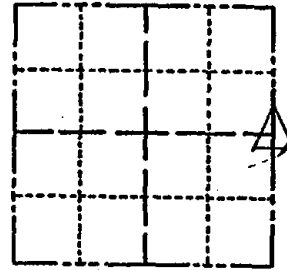
THETA ANGLE: \_\_\_\_\_

FIELD BOOK: 106 PAGE \_\_\_\_\_

SECTION 25

TOWN 15

RANGE 6



LOCATION (Indicated by 'X')

SEAL:

## BASIS FOR MONUMENT LOCATION

(Use reverse side if necessary)

Show info such as: History of corner, with reference to Vol. and pg, dates, surveyor; exact description of monument replaced; if location computed, by taped or EDM traverse; landowner remarks, etc.

Found RR spike and set monument

May 4, 1972

Sam T. Mullen R.L.S. S-981

*Re Set Harrison 5-20-76 6R-SS*

CERTIFIED CORRECT:

Registered Land Surveyor

DATE: \_\_\_\_\_

*APR 11 '90 Mark Carlen  
OCT 22 '85 Ken Carlson*

## TIE SKETCH

(Show at least four ties)

