

30
SECTION

15
TOWN

06
RANGE

ADAMS COUNTY

COUNTY CORNER NO: 102

ROMPORTOL ID: 41506300020

PUBLIC LAND SURVEY MONUMENT RECORD

TYPE OF MONUMENT: HARRISON
ADAMS COUNTY COORDINATES, NAD 83 (2007)

N. 138201.528

E. 528634.632

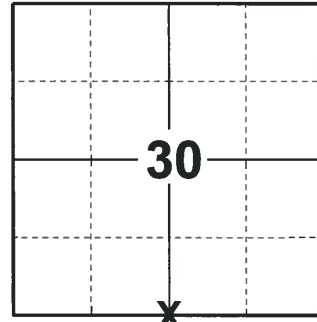
ELEVATION- - - DATUM - -

FIELD WORK DATE: 07/17/2018

BASIS FOR MONUMENT LOCATION

1975 - PLS 1103 RAN EDM/TRANSIT TRAVERSE AROUND SECTIONS 19 AND 30 TO DETERMINE SEARCH AREAS FOR INVESTIGATION. FOUND NO EVIDENCE OF THE ORIGINAL CORNER OR ANY SUBSEQUENT REMONUMENTATION. CALCULATED THE POSITION ON LINE AND AT PROPORTIONAL DISTANCE BETWEEN ADJACENT SECTION CORNERS. SET HARRISON AT CALCULATED POSITION AND TIED OUT.

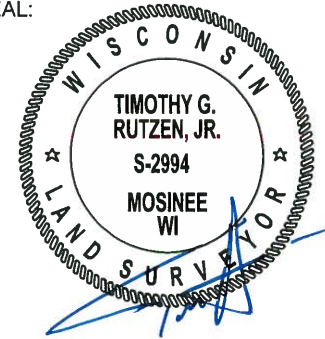
2018 - PLS 2994 FOUND A HARRISON MONUMENT 4" ABOVE THE GROUND SURFACE. FOUND NO EVIDENCE OF ANY OF THE TIES OR WITNESSES. HOWEVER, THE LOCATION FIT THE DISTANCE CALL TO THE EDGE OF THE FIELD. AFTER FURTHER REVIEW, THE CORNER FALLS ON LINE, BUT 66'± EAST FROM BEING EQUIDISTANT. ACCEPTED THE HARRISON MONUMENT AS THE BEST EVIDENCE OF THE CORNER LOCATION. SET 4 NEW TIES AND MEASURED TO THE TIES.



LOCATION

(INDICATE CORNER BY "X")

SEAL:



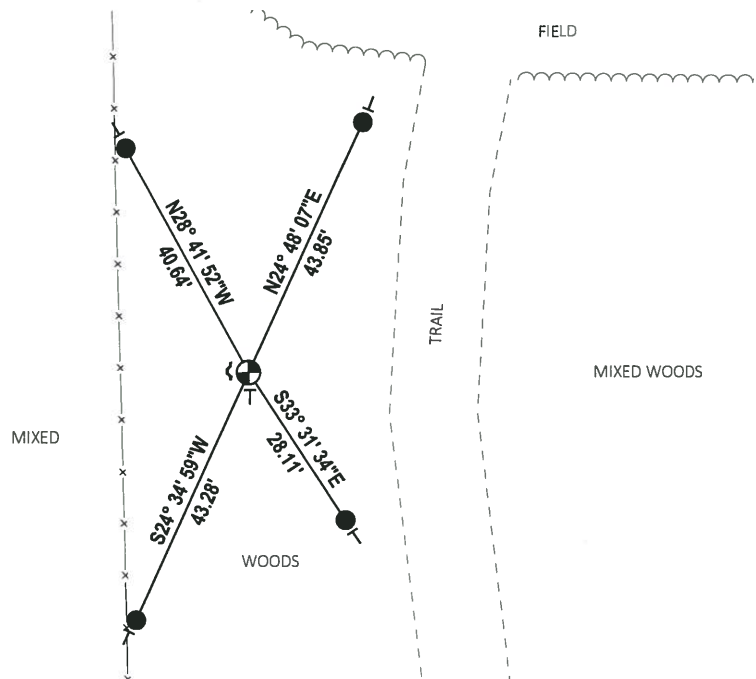
DATA SHOWN HERE ON THIS TIE SHEET IS CORRECT AND COMPLETE TO THE BEST OF MY KNOWLEDGE AND BELIEF.

PROFESSIONAL LAND SURVEYOR

DATE 8-10-18

- TIE SKETCH

NOTE: THE CORNER FALLS 30'± WEST OF THE CENTERLINE OF THE TRAIL.

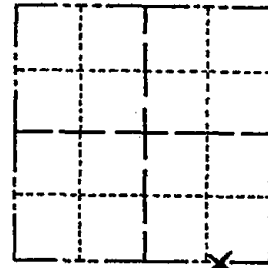


- SET 3/4" x 18" IRON REBAR, 1.50#/FT
- ⊕ FOUND HARRISON MONUMENT
- ↘ STEEL FENCE POST
- ⊥ VINYL "T" POST

Government Land Corner Certificate

ADAMS County
 TYPE OF MONUMENT: 2"x30" IRON PIPE/ALUM. CAP
 STATE PLANE COORDINATES: N _____
 E _____
 ELEVATION — M.S.L. DATUM: _____
 THETA ANGLE: _____
 FIELD BOOK: 91 PAGE 37
 DRAWN BY: LANCE HABECK

CORNER NO. 102
 SECTION 30
 TOWN 17
 RANGE 5



LOCATION
(Indicated by 'X')

BASIS FOR MONUMENT LOCATION

Show info such as: History of corner, with reference to Vol. and pg., dates, surveyor; exact description of monument replaced; if location computed, by taped or EDM traverse; landowner remarks, etc. (Use reverse side if necessary)

This corner was set at the end of a long row of large oak trees that appear to be an ancient possession line. No other evidence is available for setting this corner.

OK 1-30-90 KZ-SS

2 GONE 2 NEW 3/28/00 MT JG
 ALL OK, 2-14-05 JG-DA
 " 12-16-10 SS

SEAL:



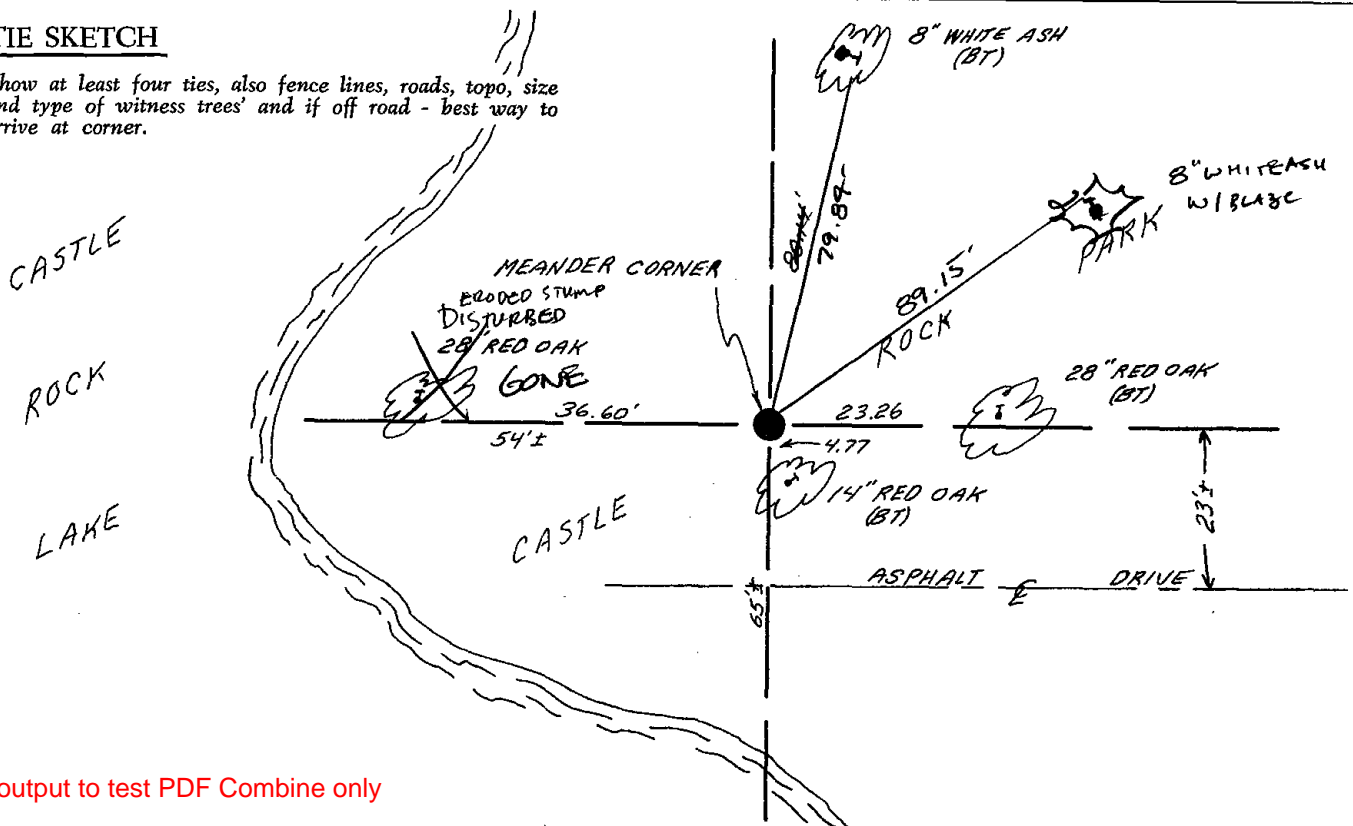
DATA SHOWN HERE ON
CERTIFIED CORRECT:

Lance J. Habeck
Registered Land Surveyor

DATE: February 17, 1982

TIE SKETCH

Show at least four ties, also fence lines, roads, topo, size and type of witness trees and if off road - best way to arrive at corner.



30
SECTION

17
TOWN

05
RANGE

ADAMS COUNTY

COUNTY CORNER NO: 102A
ROMPORTOL ID: 41705300020A

PUBLIC LAND SURVEY MONUMENT RECORD

TYPE OF MONUMENT: 2-3/8" O.D. IRON PIPE W/ALUMINUM CAP
ADAMS COUNTY COORDINATES, NAD 83 (2007)

N. 197267.248

E. 498633.562

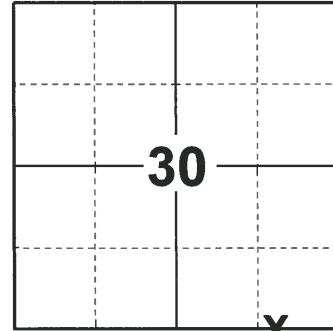
ELEVATION- DATUM

FIELD WORK DATE: 02/20/2019

BASIS FOR MONUMENT LOCATION

1982 - PLS-1444 THIS CORNER WAS SET AT THE END OF A LONG ROW OF LARGE OAK TREES THAT APPEAR TO BE AN ANCIENT POSSESSION LINE. NO OTHER EVIDENCE IS AVAILABLE FOR SETTING THIS CORNER.

2019 - PLS-2675 FOUND 2-3/8" O.D. IRON PIPE W/ALUMINUM CAP 2" BELOW THE GROUND AND 3 WITNESS TREES. THE MONUMENT AGREES WITH ALL 3 WITNESS TREES. ACCEPTED THE 2-3/8" O.D. IRON PIPE W/ALUMINUM CAP AS THE CORNER. SET 4 NEW TIES AND MEASURED TO THE EXISTING WITNESS TREES.



LOCATION **X**

(INDICATE CORNER BY "X")

SEAL:



DATA SHOWN HERE ON THIS TIE SHEET IS CORRECT AND COMPLETE TO THE BEST OF MY KNOWLEDGE AND BELIEF.

PROFESSIONAL LAND SURVEYOR

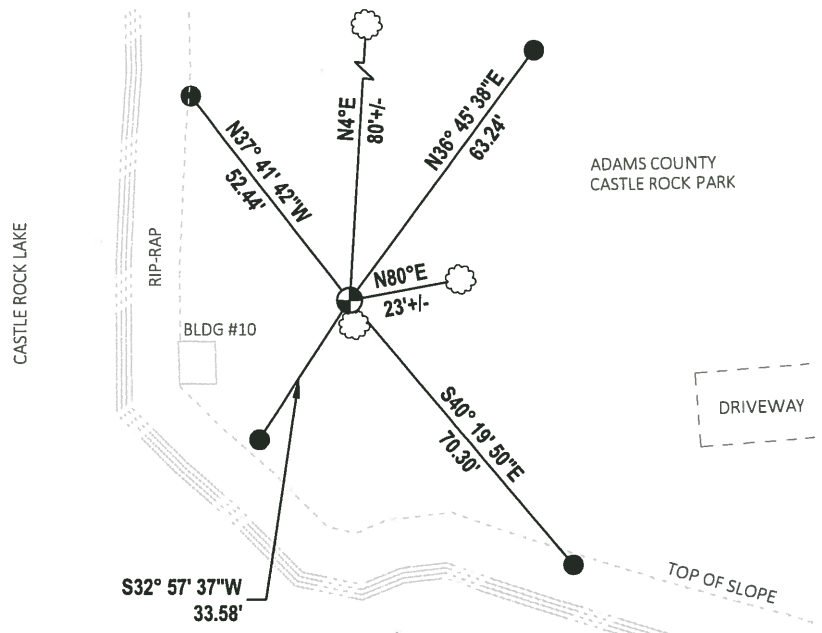
DATE 3/12/19

- TIE SKETCH

NOTE: THE CORNER LANDS 4'± NORTH OF LARGE WITNESS TREE.



- SET 3/4" x 18" IRON REBAR, 1.50#/FT
- ⊕ FOUND 2-3/8" O.D. IRON PIPE W/ALUMINUM CAP
- ☁ WITNESS TREE

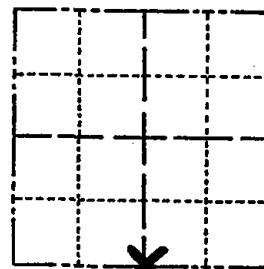


ADAMS COUNTY

Survey Monument Record

TYPE OF MONUMENT: Standard Harrison
 STATE PLANE COORDINATES: N _____
 E _____
 ELEVATION — M.S.L. DATUM: _____
 THETA ANGLE: _____
 FIELD BOOK: _____ PAGE _____

CORNER NO. 842
 SECTION 30
 TOWN 15
 RANGE 6



LOCATION
(Indicated by 'X')

SEAL:

BASIS FOR MONUMENT LOCATION

(Use reverse side if necessary)

Show info such as: History of corner, with reference to Vol. and pg, dates, surveyor; exact description of monument replaced; if location computed, by taped or EDM traverse; landowner remarks, etc.

Ran EDM/transit traverse around Sections 19 and 30 to determine search areas for investigation.

Could find no evidence of the original corner or any subsequent remonumentation.

Set corner on line and at proportional distance between adjacent section corners.

CORNER OK 10-11-96 JS-SS

MAINTENANCE RECORD

Date	amt.	Remarks
12-28-81	RW-SK	MON + TIES O.K.
3-5-86	GR-SS	" " "
3-13-91	JG	ALL OK
2/20/96	JG-CR	ALL OK
5-26-06	STS	" "
12-21-11	ML	2 NEW, 2 GONE



CERTIFIED CORRECT:

Dale C. Hagen

Registered Land Surveyor

DATE: December 2, 1975

TIE SKETCH

(Show at least four ties)

NOTE:

Ties in trees to nail in disc.

