

PUBLIC LAND SURVEY MONUMENT RECORD

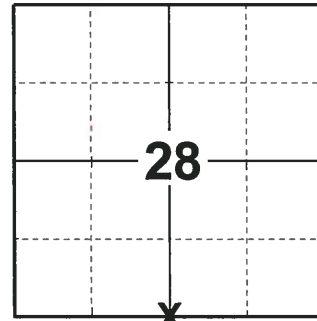
TYPE OF MONUMENT: HARRISON
ADAMS COUNTY COORDINATES, NAD 83 (2007)

N. 138192.830

E. 539142.674

ELEVATION- DATUM

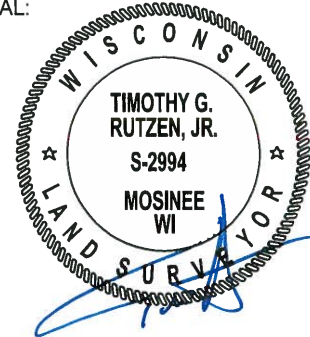
FIELD WORK DATE: 07/09/2018



LOCATION

(INDICATE CORNER BY "X")

SEAL:



DATA SHOWN HERE ON THIS TIE SHEET IS CORRECT AND COMPLETE TO THE BEST OF MY KNOWLEDGE AND BELIEF.

PROFESSIONAL LAND SURVEYOR

DATE 8-10-18

BASIS FOR MONUMENT LOCATION

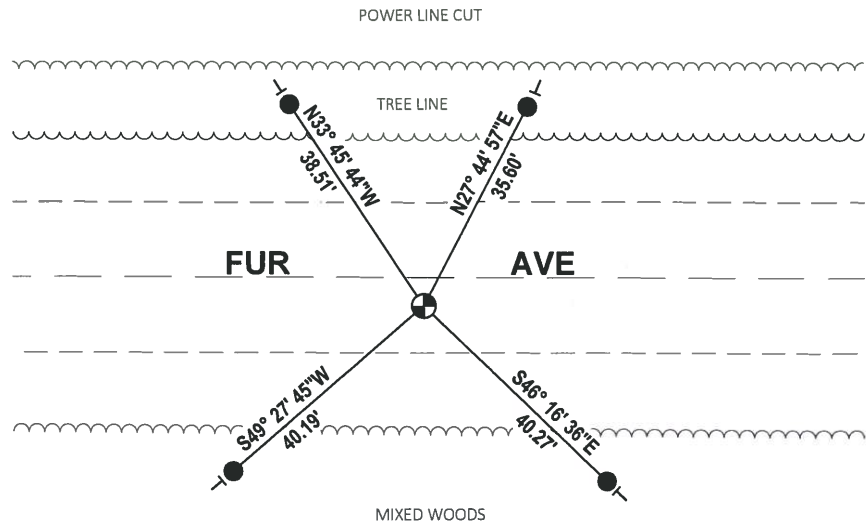
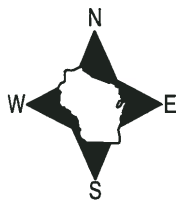
1980 - PLS 1478 CALCULATED POSITION EQUIDISTANT AND ON LINE BETWEEN ADJACENT SECTION CORNERS. THIS LOCATION FITS ORIGINAL DISTANCE NOTES VERY WELL. NO EVIDENCE OF ANY PREVIOUS MONUMENTATION WAS FOUND. NO RECORD OF ANY MONUMENTATION SUBSEQUENT TO THE ORIGINAL WAS FOUND. SET HARRISON AT THE CALCULATED POSITION AND TIED OUT.

1999 - PLS 1274 FOUND THE HARRISON MONUMENT AND ALL OF TIES.

2018 - PLS 2994 FOUND A HARRISON MONUMENT 3" BELOW THE ROAD SURFACE. FOUND NO EVIDENCE OF ANY OF THE TIES OR WITNESSES. HOWEVER, THE LOCATION FIT THE DISTANCE TO THE CENTERLINE OF FUR AVE. AFTER REVIEW OF CORNER LOCATION, THE CORNER FALLS 14'± NORTH FROM BEING ON LINE AND 9'± WEST FROM BEING EQUIDISTANT BETWEEN SECTION CORNERS. ACCEPTED THE HARRISON MONUMENT AS THE BEST EVIDENCE OF THE CORNER LOCATION. SET 4 NEW TIES AND MEASURED TO THE TIES.

TIE SKETCH

NOTE: THE CORNER FALLS 4'± SOUTH OF THE CENTERLINE OF FUR AVE.

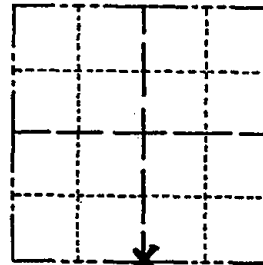


- SET 3/4" x 18" IRON REBAR, 1.50#/FT
- ⊕ FOUND HARRISON MONUMENT
- | VINYL "T" POST

Government Land Corner Certificate

Adams County
 TYPE OF MONUMENT: Harrison
 STATE PLANE COORDINATES: N _____
 E _____
 ELEVATION — M.S.L. DATUM: _____
 THETA ANGLE: _____
 FIELD BOOK: 83 PAGE 82
 DRAWN BY: G. Rhinehart

CORNER NO. 106
 SECTION 28
 TOWN 15
 RANGE 6



LOCATION
 (Indicated by 'X')

BASIS FOR MONUMENT LOCATION

Show info such as: History of corner, with reference to Vol. and pg., dates, surveyor; exact description of monument replaced; if location computed, by taped or EDM traverse; landowner remarks, etc. (Use reverse side if necessary)

Set corner equidistant and on line between adjacent section corners. This location fits original distance notes very well. No evidence of any previous monumentation was found. No record of any monumentation subsequent to the original was found.

SEAL:



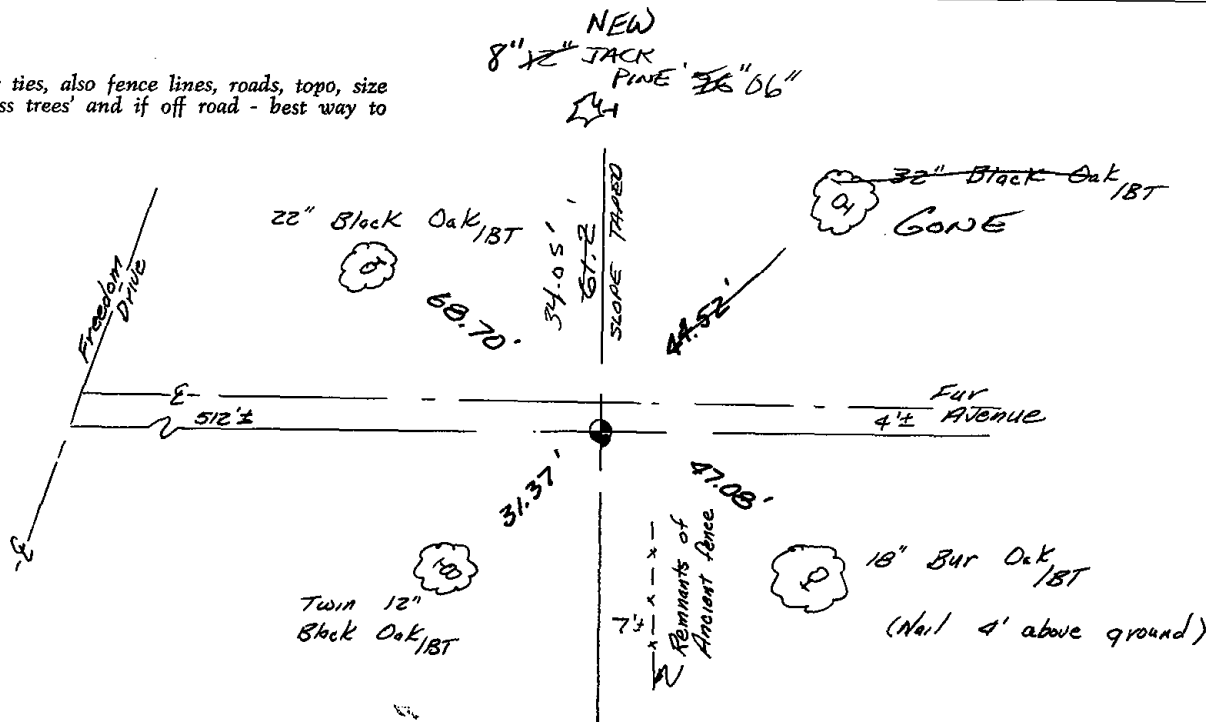
DATA SHOWN HERE ON
 CERTIFIED CORRECT:

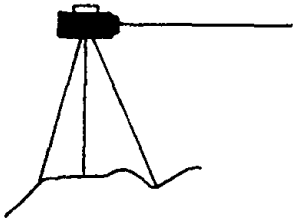
Gregory P. Rhinehart
 Registered Land Surveyor

DATE: 4/18/80

TIE SKETCH

Show at least four ties, also fence lines, roads, topo, size and type of witness trees and if off road - best way to arrive at corner.





BRENEMAN'S BLUFFVIEW LAND SURVEYING SERVICES



E 12865 C. T. H. W
BARABOO, WISCONSIN, 53913
PHONE 608-356-8780

I hereby certify that I have found the cast iron Harrison monument, and ties, representing the N. $\frac{1}{4}$ corner, of Section 33, Township 15 North, Range 6 East, Town of Springville, County of Adams, State of Wisconsin, as established by Gregory P. Rhinehart, dated 4-18-1980, and all points are still intact.


JOHN A. BRENEMAN - R.L.S #1274

08-26-1989
Date

