

## PUBLIC LAND SURVEY MONUMENT RECORD

TYPE OF MONUMENT: HARRISON  
 ADAMS COUNTY COORDINATES, NAD 83 (2007)

N. 138198.523

E. 544423.892

ELEVATION- - - - DATUM - - - -

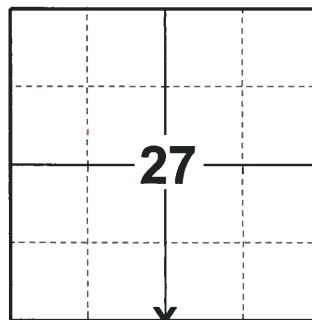
FIELD WORK DATE: 07/09/2018

### BASIS FOR MONUMENT LOCATION

1980 - PLS 1478 CALCULATED CORNER EQUIDISTANT AND ON LINE BETWEEN ADJACENT SECTION CORNERS. THIS LOCATION FITS ORIGINAL NOTES AND OTHER CORNERS IN THE AREA WELL. A.B.K. EXCAVATED ON THE CENTERLINE AT THIS LOCATION AND FOUND NO EVIDENCE OF MONUMENTATION AT THAT POINT. NO RECORD OF MONUMENTATION SUBSEQUENT TO THE ORIGINAL WAS FOUND. SET A HARRISON MONUMENT AND TIED OUT.

NOTE BY A.KIEDROWSKI: ROUGH CHAINED TO THE SOUTH OF HERE TO CHECK POSSESSION LINES BUT FOUND NOTHING CONCLUSIVE.

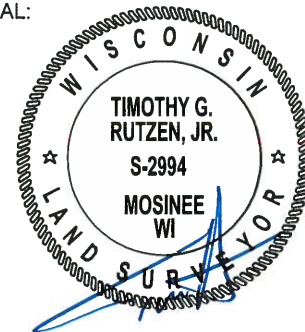
2018 - PLS 2994 FOUND A HARRISON MONUMENT FLUSH WITH THE GROUND SURFACE AND 1 PROPERTY IRON. THE MONUMENT AGREES WITH THE EXISTING DISTANCE TIE TO THE C/L OF FUR AVE. ACCEPTED THE HARRISON MONUMENT AS THE BEST EVIDENCE OF THE CORNER LOCATION. SET 3 NEW TIES AND MEASURED TO THE TIES.



**LOCATION**

(INDICATE CORNER BY "X")

SEAL:



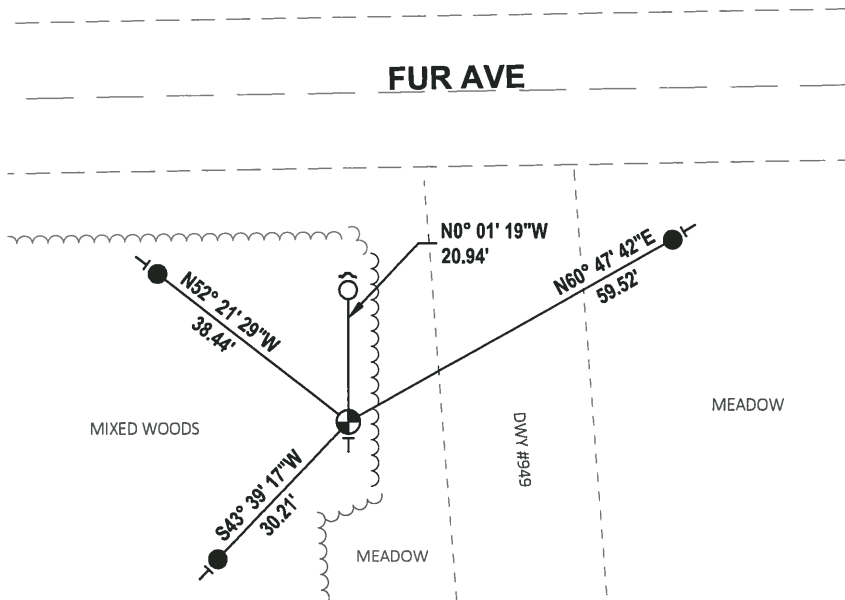
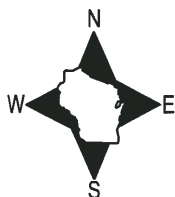
DATA SHOWN HERE ON THIS TIE SHEET IS CORRECT AND COMPLETE TO THE BEST OF MY KNOWLEDGE AND BELIEF.

PROFESSIONAL LAND SURVEYOR

DATE 8-10-18

### - TIE SKETCH

NOTE: THE CORNER FALLS 52'± SOUTH OF THE CENTERLINE OF FUR AVE AND 27'± WEST OF THE CENTERLINE OF DWY #949.

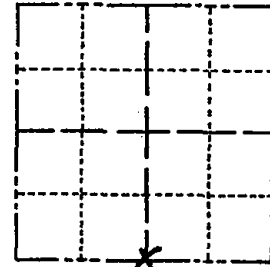


- SET 3/4" x 18" IRON REBAR, 1.50#/FT
- FOUND 3/4" IRON ROD
- ⊕ FOUND HARRISON MONUMENT
- ↗ STEEL FENCE POST
- ┌ VINYL "T" POST

# Government Land Corner Certificate

Adams County  
 TYPE OF MONUMENT: Harrison  
 STATE PLANE COORDINATES: N \_\_\_\_\_  
 E \_\_\_\_\_  
 ELEVATION — M.S.L. DATUM: \_\_\_\_\_  
 THETA ANGLE: \_\_\_\_\_  
 FIELD BOOK: 83 PAGE 84  
 DRAWN BY: G. Rhinehart

CORNER NO. 108  
 SECTION 27  
 TOWN 16 15  
 RANGE 5 6



LOCATION  
(Indicated by 'X')

## BASIS FOR MONUMENT LOCATION

Show info such as: History of corner, with reference to Vol. and pg., dates, surveyor; exact description of monument replaced; if location computed, by taped or EDM traverse; landowner remarks, etc. (Use reverse side if necessary)

Set corner equidistant and on line between adjacent section corners. This location fits original notes and other corners in the area well. A.B.K. excavated on the centerline at this location and found no evidence of monumentation at that point. No record of monumentation subsequent to the original was found.

Note by A.Kiedrowski: Rough chained to the south of here to check possession lines but found nothing conclusive.

SEAL:



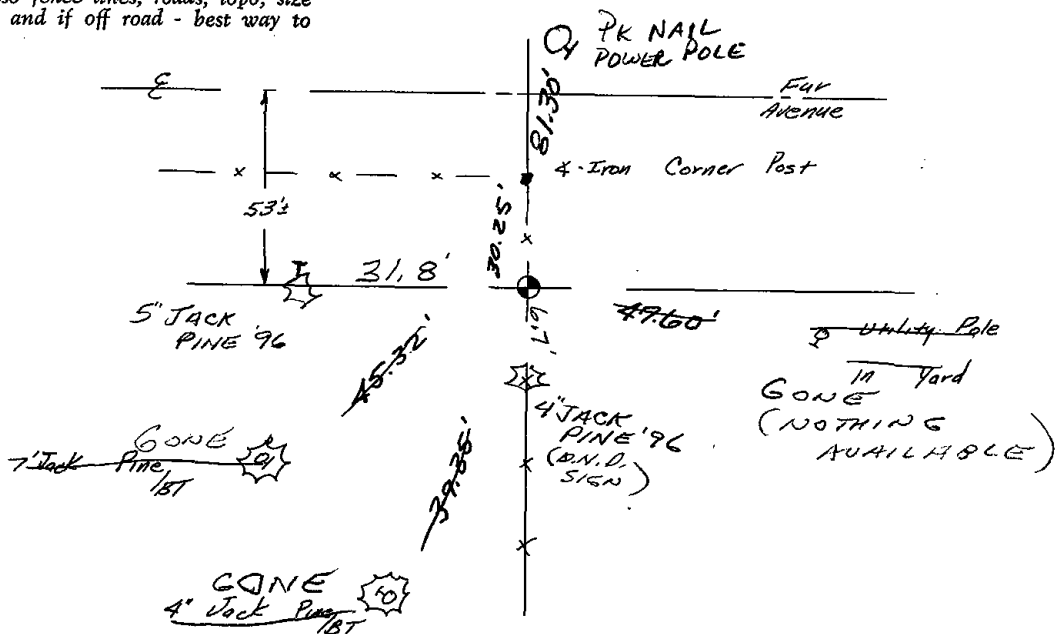
DATA SHOWN HERE ON  
CERTIFIED CORRECT:

Gregory P Rhinehart  
Registered Land Surveyor

DATE: 4/18/80

## TIE SKETCH

Show at least four ties, also fence lines, roads, topo, size and type of witness trees and if off road - best way to arrive at corner.





Adams County

TYPE OF MONUMENT: Harrison

STATE PLANE COORDINATES: N \_\_\_\_\_  
E \_\_\_\_\_

ELEVATION — M.S.L. DATUM: \_\_\_\_\_

THETA ANGLE: \_\_\_\_\_

FIELD BOOK: B3 PAGE B4

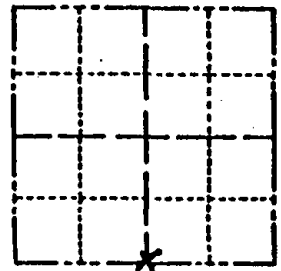
DRAWN BY: G. Rhinehart

CORNER NO. 108

SECTION 27

TOWN 16 15

RANGE 5 6



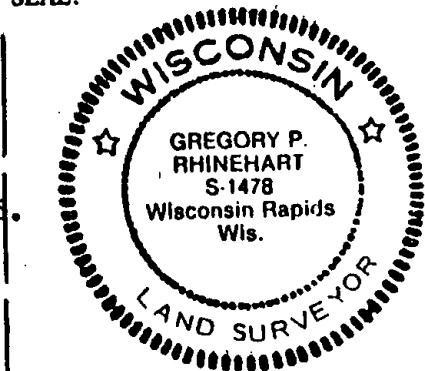
LOCATION  
(Indicated by 'X')

BASIS FOR MONUMENT LOCATION

Show info such as: History of corner, with reference to Vol. and pg., dates, surveyor; exact description of monument replaced; if location computed, by taped or EDM traverse; landowner remarks, etc. (Use reverse side if necessary)

Set corner equidistant and on line between adjacent section corners: This location fits original notes and other corners in the area well. A.B.K. excavated on the centerline at this location and found no evidence of monumentation at that point. No record of monumentation subsequent to the original was found.

Note by A. Kiedrowski: Rough chained to the south of here to check possession lines but found nothing conclusive.



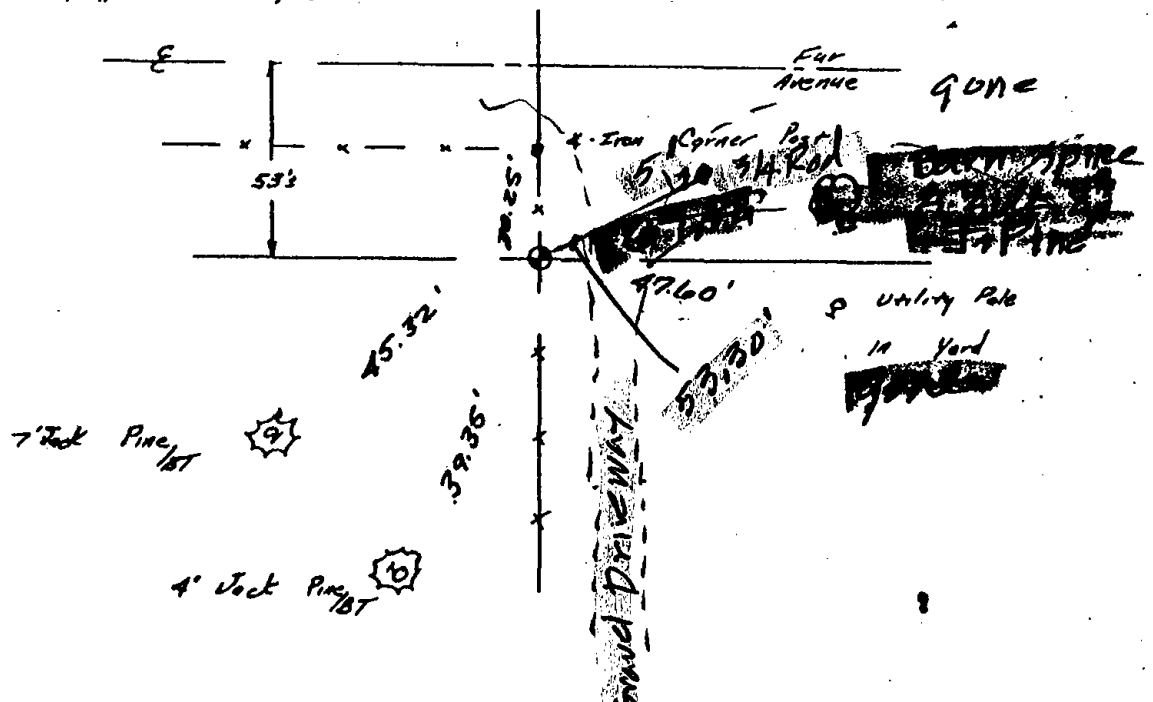
DATA SHOWN HERE ON  
CERTIFIED CORRECT:

Gregory P Rhinehart  
Registered Land Surveyor

DATE: 4/18/80

TIE SKETCH

Show at least four ties, also fence lines, roads, topo, size and type of witness trees and if off road - best way to arrive at corner.

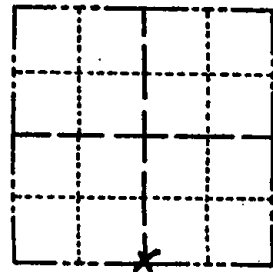


JUNE 21 1980  
KRM  
CRL/KRM

Adams County

CORNER NO. 108  
SECTION 27  
TOWN 16 15  
RANGE 5 6

TYPE OF MONUMENT: Harrison  
STATE PLANE COORDINATES: N \_\_\_\_\_  
E \_\_\_\_\_  
ELEVATION — M.S.L. DATUM: \_\_\_\_\_  
THETA ANGLE: \_\_\_\_\_  
FIELD BOOK: B3 PAGE B4  
DRAWN BY: G. Rhinehart



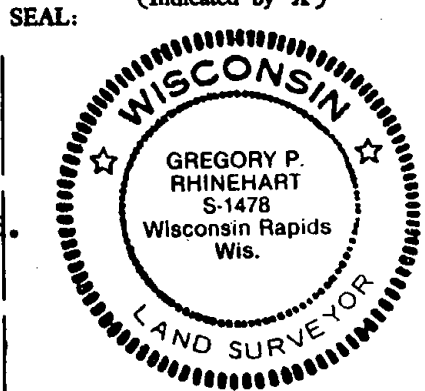
LOCATION  
(Indicated by 'X')

BASIS FOR MONUMENT LOCATION

Show info such as: History of corner, with reference to Vol. and pg., dates, surveyor; exact description of monument replaced; if location computed, by taped or EDM traverse; landowner remarks, etc. (Use reverse side if necessary)

Set corner equidistant and on line between adjacent section corners. This location fits original notes and other corners in the area well. A.B.K. excavated on the centerline at this location and found no evidence of monumentation at that point. No record of monumentation subsequent to the original was found.

Note by A.Kiedrowski: Rough chained to the south of here to check possession lines but found nothing conclusive.



DATA SHOWN HERE ON CERTIFIED CORRECT:

Gregory P Rhinehart  
Registered Land Surveyor

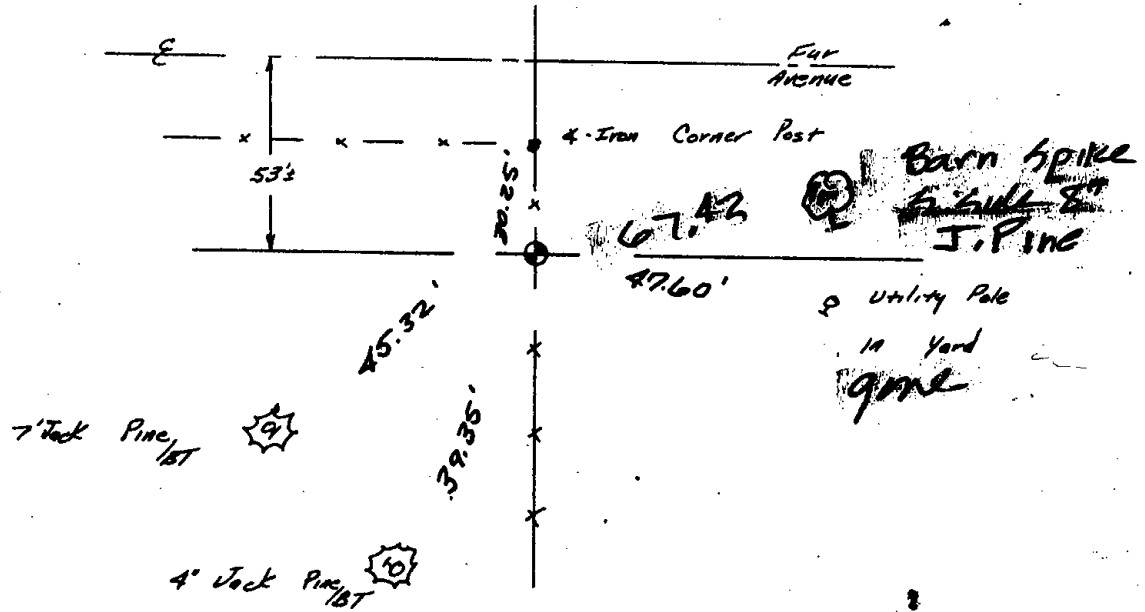
DATE: 4/18/80

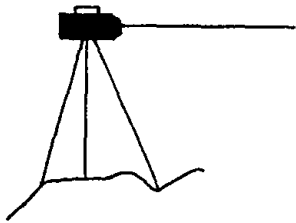
July 12 1981 Ken Cookman

TIE SKETCH

Show at least four ties, also fence lines, roads, topo, size and type of witness trees and if off road - best way to arrive at corner.

2687  
1323  
1154  
169





# BRENEMAN'S BLUFFVIEW LAND SURVEYING SERVICES



E 12865 C. T. H. W  
BARABOO, WISCONSIN, 53913  
PHONE 608-356-8780

I hereby certify that I have found the cast iron Harrison monument, and  
ties, representing the N.E. corner, of Section 33,  
Township 15 North, Range 6 East, Town of Springville,  
County of Adams, State of Wisconsin, as established  
by Gregory P. Rhinehart dated 4-18-82(?), and all  
points are still intact.

John A. Breneman  
JOHN A. BRENEMAN - R.L.S #1274

08-26-1999  
Date

