

26  
SECTION

15  
TOWN

06  
RANGE

# ADAMS COUNTY

COUNTY CORNER NO: 110

ROMPORTOL ID: 41506260020

## PUBLIC LAND SURVEY MONUMENT RECORD

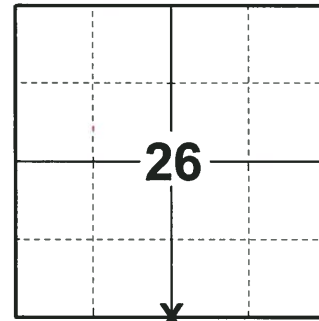
TYPE OF MONUMENT: HARRISON  
ADAMS COUNTY COORDINATES, NAD 83 (2007)

N. 138215.583

E. 549670.379

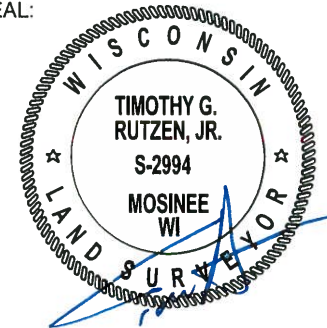
ELEVATION-        DATUM       

FIELD WORK DATE: 07/05/2018



**LOCATION**  
(INDICATE CORNER BY "X")

SEAL:



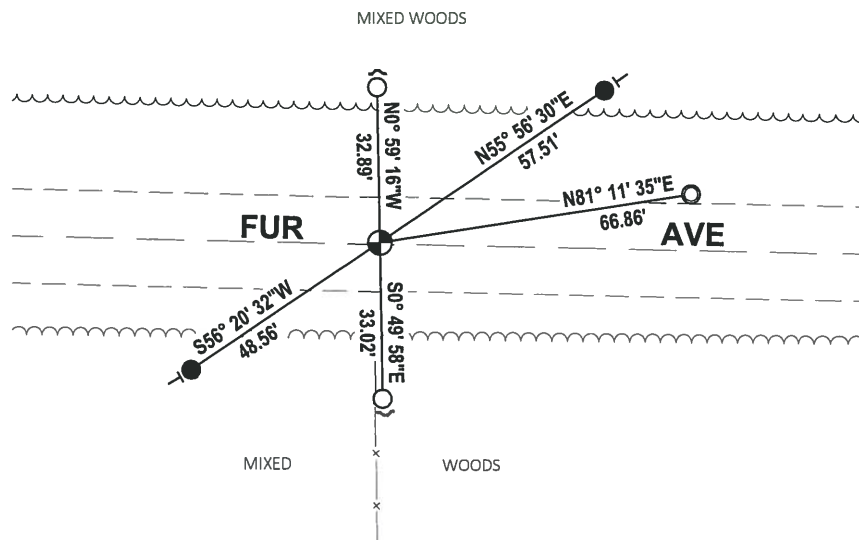
DATA SHOWN HERE ON THIS TIE SHEET IS CORRECT AND COMPLETE TO THE BEST OF MY KNOWLEDGE AND BELIEF.

PROFESSIONAL LAND SURVEYOR

DATE 8-10-18

### - TIE SKETCH

NOTE: THE CORNER FALLS 0.5'± NORTH OF THE CENTERLINE OF FUR AVE.



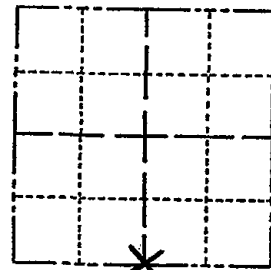
- SET 3/4" x 18" IRON REBAR, 1.50#/FT
- FOUND 3/4" IRON ROD
- FOUND 1-1/4" O.D. IRON PIPE
- ⊕ FOUND HARRISON MONUMENT
- ↙ STEEL FENCE POST
- ⊥ VINYL "T" POST

ADAMS COUNTY

Survey Monument Record

TYPE OF MONUMENT: 30" HARRISON
STATE PLANE COORDINATES: N
E
ELEVATION - M.S.L. DATUM:
THETA ANGLE:
FIELD BOOK: 110 PAGE 10

CORNER NO. 83
SECTION 26
TOWN 15
RANGE 6



LOCATION (Indicated by 'X')

BASIS FOR MONUMENT LOCATION

(Use reverse side if necessary)

Show info such as: History of corner, with reference to Vol. and pg, dates, surveyor; exact description of monument replaced; if location computed, by taped or EDM traverse; landowner remarks, etc.

This corner monumented by Co. Surveyor Mullen in 1971, but was disputed. A railroad spike set here by Midstates for surveys to the west of here accepted as correct after an extensive EDM traverse was analyzed taking into account all possession lines and the stone found 1/2 mile east of here. No excavation was attempted here since the point falls in a road cut. It should be noted that the distances from here to the corner 1/2 mile east and the corner 1/2 mile west differ by more than 60 feet. This is what probably threw Mullen off when he monumented this area.

SEAL:



CORNER O.K. 10-13-76 JS-SS
ALL OK 1-31-91 KE-SG
1-GONE 4-LEFT 1-16-98 JG-SS
OK 2-6-01 JG

CERTIFIED CORRECT:

Anthony B. Kiedrowski
Registered Land Surveyor

DATE: 12/27/73

TIE SKETCH 1-NEW TIE, 4-28-86 -JG
01-10-11 GR-SS OK

(Show at least four ties)

