

25 SECTION 15 TOWN 06 RANGE

ADAMS COUNTY

COUNTY CORNER NO: 113
ROMPORTOL ID: 41506250000

PUBLIC LAND SURVEY MONUMENT RECORD

TYPE OF MONUMENT: HARRISON MONUMENT
ADAMS COUNTY COORDINATES, NAD 83 (2007)

N. 138198.985
E. 557705.183

ELEVATION- DATUM

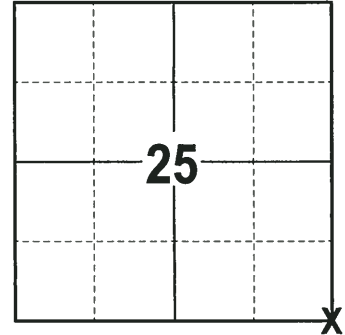
FIELD WORK DATE: 09/18/2017

BASIS FOR MONUMENT LOCATION

1972 - PLS 981 FOUND RR SPIKE AT THE CORNER LOCATION, SET A 30" HARRISON MONUMENT AND RE-TIED.

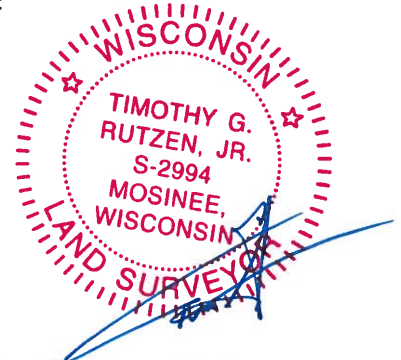
1999 - PLS 1397 EXISTING MONUMENT WAS FOUND AT THE CORNER LOCATION. MONUMENT WAS REMOVED AND RAISED DUE TO RECONSTRUCTION OF C.T.H. B. RE-TIED CORNER.

2017 - PLS 2994 FOUND A HARRISON MONUMENT 6" BELOW THE ROAD SURFACE, 1 PROPERTY IRON USED AS A TIE AND 1 WITNESS. THE MONUMENT AGREES WITH THE EXISTING PROPERTY IRON AND WITNESS. ACCEPTED THE HARRISON MONUMENT AS THE CORNER LOCATION. SET 4 NEW TIES AND MEASURED TO THE TIES, PROPERTY IRON AND WITNESS.



LOCATION
(INDICATE CORNER BY "X")

SEAL:



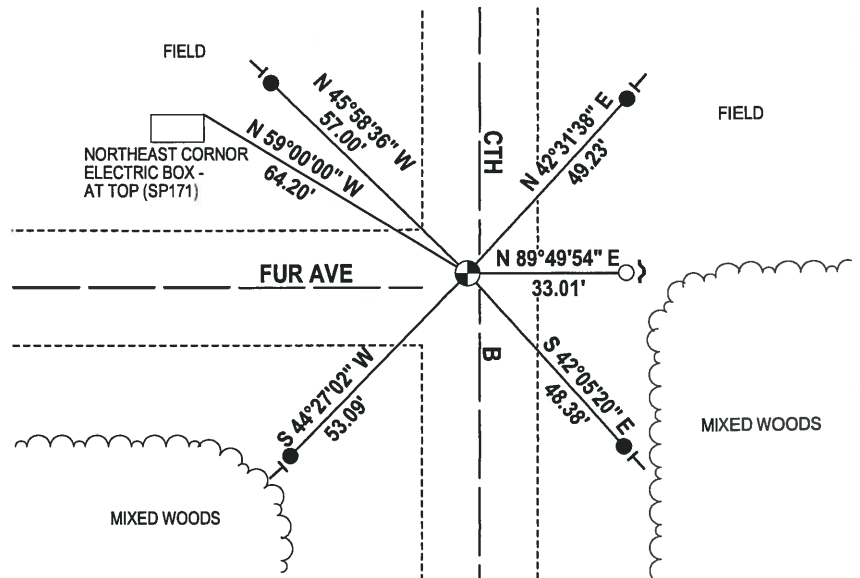
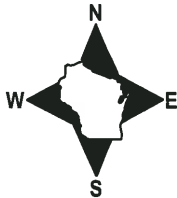
DATA SHOWN HERE ON THIS TIE SHEET IS CORRECT AND COMPLETE TO THE BEST OF MY KNOWLEDGE AND BELIEF.

PROFESSIONAL LAND SURVEYOR

DATE 11-15-17

- TIE SKETCH -

NOTE: THE CORNER FALLS 2± WEST OF THE CENTERLINE OF CTH B AND 3± NORTH OF THE CENTERLINE OF FUR AVE.



- 3/4" x 18" IRON REBAR SET, 1.50#/FT
- 3/4" IRON ROD FOUND
- ⊙ HARRISON FOUND
- ↘ STEEL FENCE POST
- ↙ VINYL "T" POST

ADAMS COUNTY

Survey Monument Record

TYPE OF MONUMENT: 30" HARRISON MARKER

STATE PLANE COORDINATES: N _____

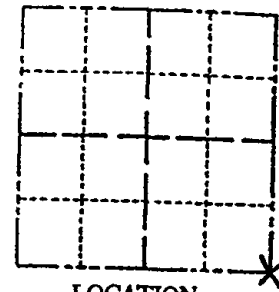
E _____

ELEVATION — M.S.L. DATUM: _____

THETA ANGLE: _____

FIELD BOOK: _____ PAGE _____

CORNER NO.	113
SECTION	25
TOWN	15N
RANGE	6E



LOCATION
(Indicated by 'X')

SEAL:

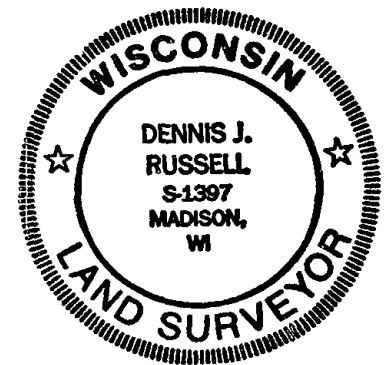
BASIS FOR MONUMENT LOCATION

(Use reverse side if necessary)

Show info such as: History of corner, with reference to Vol. and pg, dates, surveyor; exact description of monument replaced; if location computed, by taped or EDM traverse; landowner remarks, etc.

Existing monument was found in place. Monument was moved and replaced to reconstruction of C.F.T.H. "B" All tie measurements are horizontal unless stated otherwise.

2-6-01, JG - OK
 3-13-06 JG-SS OK
 OK 01-10-11 GR-SS



CERTIFIED CORRECT:

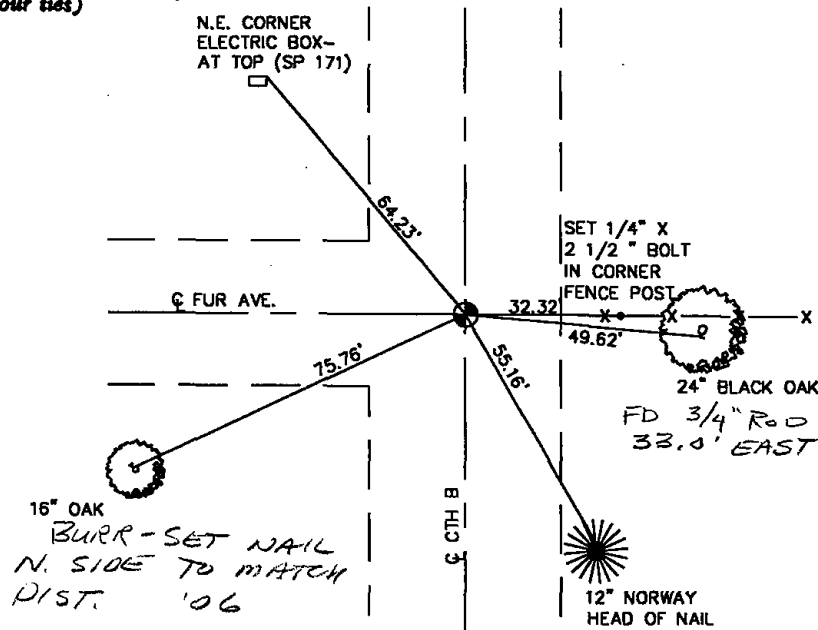
Dennis J. Russell
 Registered Land Surveyor

DATE: July 26, 1999

TIE SKETCH

(Show at least four ties)

ALL MEASUREMENTS ARE HORIZONTAL.

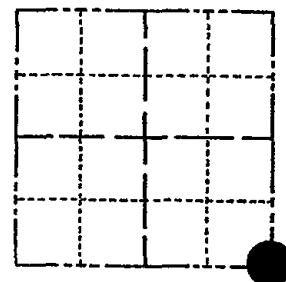


ADAMS COUNTY

Survey Monument Record

TYPE OF MONUMENT: "30" HARRISON
 STATE PLANE COORDINATES: N _____
 E _____
 ELEVATION — M.S.L. DATUM: _____
 THETA ANGLE: _____
 FIELD BOOK: 106 PAGE _____

CORNER NO. 113
 SECTION 25
 TOWN 15
 RANGE 6



LOCATION
(Indicated by 'X')

SEAL: _____

BASIS FOR MONUMENT LOCATION

(Use reverse side if necessary)

Show info such as: History of corner, with reference to Vol. and pg, dates, surveyor; exact description of monument replaced; if location computed, by taped or EDM traverse; landowner remarks, etc.

Found RR spike and set monument

May 4, 1972

Sam T. Mullen R.L.S. S-981

CORNER O.K. 5-20-76 GR-SS
 MAINTENANCE RECORD

Date	Init.	Remarks
12-12-81	74-WL	MON of TIES O.K.
1-16-86	GR-SS	"
1-31-91	KE-JG	ALL OK
1-16-96	JG-SS	3 NEW TIES
SEE ATTACHED SHEET, RUSSELL, 7/26/99		

CERTIFIED CORRECT:

Registered Land Surveyor

DATE: _____

TIE SKETCH

(Show at least four ties)

