

PUBLIC LAND SURVEY MONUMENT RECORD

TYPE OF MONUMENT: HARRISON
ADAMS COUNTY COORDINATES, NAD 83 (2007)

N. 135543.244

E. 525856.605

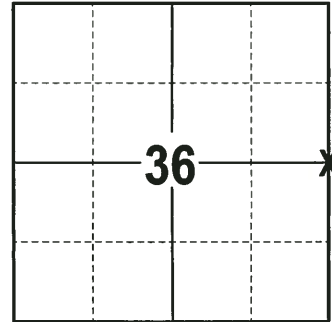
ELEVATION- DATUM

FIELD WORK DATE: 10/10/2017

BASIS FOR MONUMENT LOCATION

1977 - PLS 742 NO HISTORY WAS FOUND ON THE CORNER, BUT IT WAS SHOWN APPROXIMATELY ON CSM NO. 97. EXTENDED THE RANGE LINE SOUTHERLY FROM THAT ESTABLISHED BY HAGEN IN JUNE, 1977. SET A HARRISON MONUMENT AT THE CALCULATED LOCATION AND TIED OUT.

2017 - PLS 2994 FOUND A HARRISON MONUMENT 2" ABOVE THE GROUND SURFACE AND 2 WITNESS TREES. THE MONUMENT AGREES WITH THE EXISTING WITNESS TREES. ACCEPTED THE HARRISON MONUMENT AS THE CORNER LOCATION. SET 4 NEW TIES AND MEASURED TO THE TIES AND WITNESS TREES.



LOCATION
(INDICATE CORNER BY "X")

SEAL:

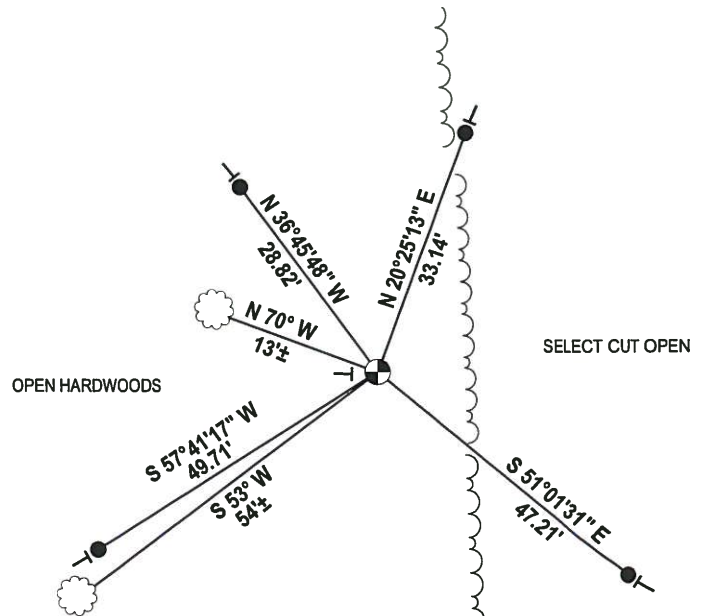
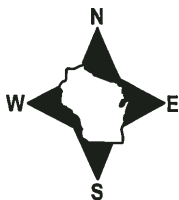


DATA SHOWN HERE ON THIS TIE SHEET IS CORRECT AND COMPLETE TO THE BEST OF MY KNOWLEDGE AND BELIEF.

PROFESSIONAL LAND SURVEYOR

DATE 12-4-17

- TIE SKETCH



- 3/4" x 18" IRON REBAR SET, 1.50#/FT
- ⊙ HARRISON FOUND
- VINYL "T" POST
- ☁ WITNESS TREE FOUND

ADAMS COUNTY

Survey Monument Record

TYPE OF MONUMENT: Harrison

STATE PLANE COORDINATES: N _____

E _____

ELEVATION — M.S.L. DATUM: _____

THETA ANGLE: _____

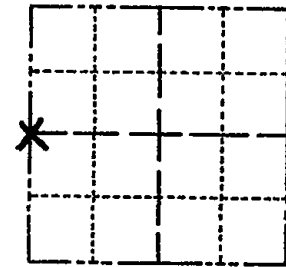
FIELD BOOK: _____ PAGE _____

CORNER NO. 114

SECTION 31

TOWN 15

RANGE 6



LOCATION
(Indicated by 'X')

SEAL:



BASIS FOR MONUMENT LOCATION

(Use reverse side if necessary)

Show info such as: History of corner, with reference to Vol. and pg. dates, surveyor; exact description of monument replaced; if location computed, by taped or EDM traverse; landowner remarks, etc.

No history - It was shown approximately on CSM No. 97.

I extended the Range Line southerly from that established by Hagen in June, 1977.

EDM traverse

See section summary

CERTIFIED CORRECT

Kenneth G. Carlson
Registered Land Surveyor

DATE: Nov 5, 1977

TIE SKETCH

(Show at least four ties)

