

32  
SECTION

15  
TOWN

06  
RANGE

# ADAMS COUNTY

COUNTY CORNER NO: 116

ROMPORTOL ID: 41506322000

## PUBLIC LAND SURVEY MONUMENT RECORD

TYPE OF MONUMENT: HARRISON (BROKEN-TOP)  
ADAMS COUNTY COORDINATES, NAD 83 (2007)

N. 135559.006

E. 536579.294

ELEVATION-      DATUM     

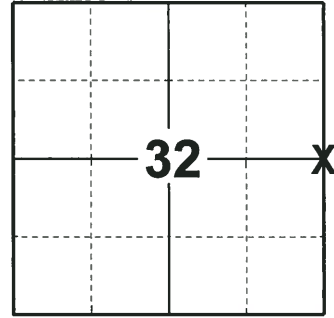
FIELD WORK DATE: 07/17/2018

### BASIS FOR MONUMENT LOCATION

1978 - PLS 1478 CALCULATED POSITION EQUIDISTANT AND ON LINE BETWEEN ADJACENT SECTION CORNERS. NO PREVIOUS MONUMENTATION WAS FOUND. SET HARRISON AT CALCULATED POSITION AND TIED OUT.

1999 - PLS 1274 FOUND HARRISON MONUMENT AND ALL TIES.

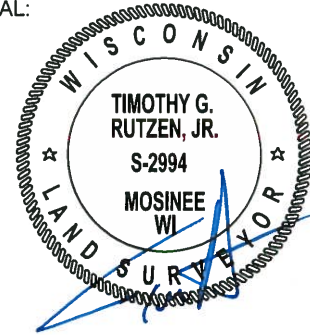
2018 - PLS 2994 FOUND A HARRISON MONUMENT WITH A BROKEN-TOP FLUSH WITH THE GROUND SURFACE. FOUND NO EVIDENCE OF ANY OF THE TIES OR WITNESSES. ACCEPTED THE HARRISON MONUMENT WITH A BROKEN-TOP AS THE BEST EVIDENCE OF THE CORNER LOCATION. SET 4 NEW TIES AND MEASURED TO THE TIES.



### LOCATION

(INDICATE CORNER BY "X")

SEAL:



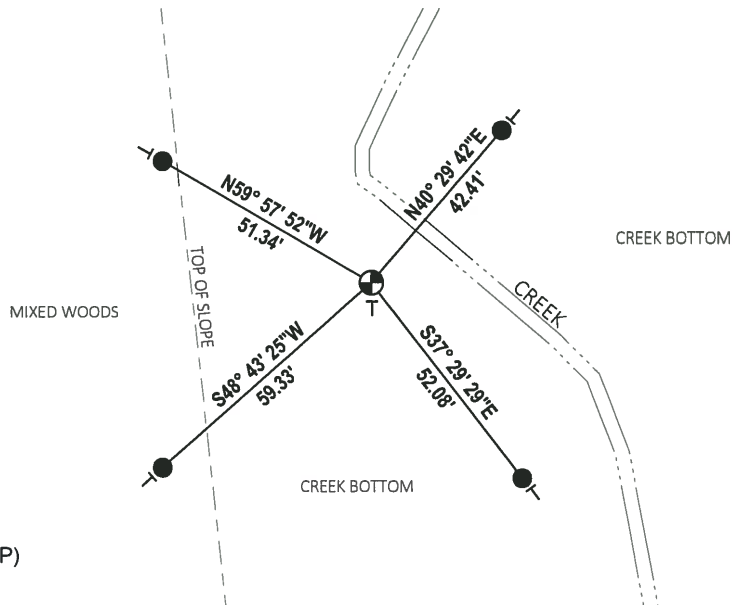
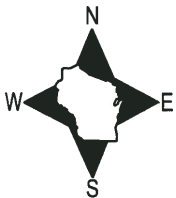
DATA SHOWN HERE ON THIS TIE SHEET IS CORRECT AND COMPLETE TO THE BEST OF MY KNOWLEDGE AND BELIEF.

PROFESSIONAL LAND SURVEYOR

DATE 8-10-18

### - TIE SKETCH

NOTE: THE CORNER FALLS 38± EAST OF THE TOP OF SLOPE.



- SET 3/4" x 18" IRON REBAR, 1.50#/FT
- ⊕ FOUND HARRISON MONUMENT (BROKEN-TOP)
- ⊥ VINYL "T" POST

**Government Land Corner Certificate**

ADAMS County

TYPE OF MONUMENT: HARRISON

STATE PLANE COORDINATES: N \_\_\_\_\_  
E \_\_\_\_\_

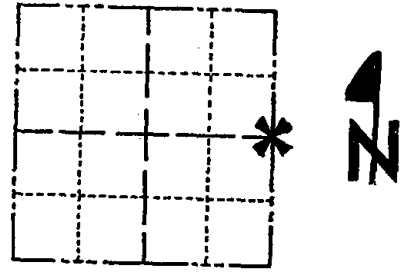
ELEVATION — M.S.L. DATUM: \_\_\_\_\_

THETA ANGLE: \_\_\_\_\_

FIELD BOOK: 57 PAGE 80

DRAWN BY: S. SORENSEN

CORNER NO. 116  
SECTION 32  
TOWN 15  
RANGE 6



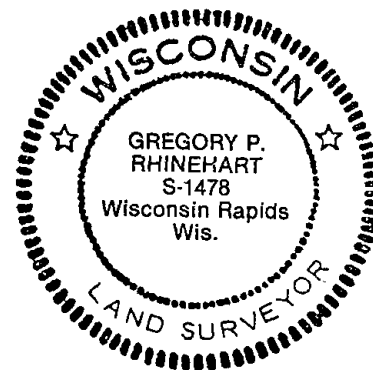
LOCATION  
(Indicated by 'X')

**BASIS FOR MONUMENT LOCATION**

Show info such as: History of corner, with reference to Vol. and pg., dates, surveyor; exact description of monument replaced; if location computed, by taped or EDM traverse; landowner remarks, etc. (Use reverse side if necessary)

Set corner equidistant and on line between adjacent Section corners. No previous monumentation was found.

SEAL:



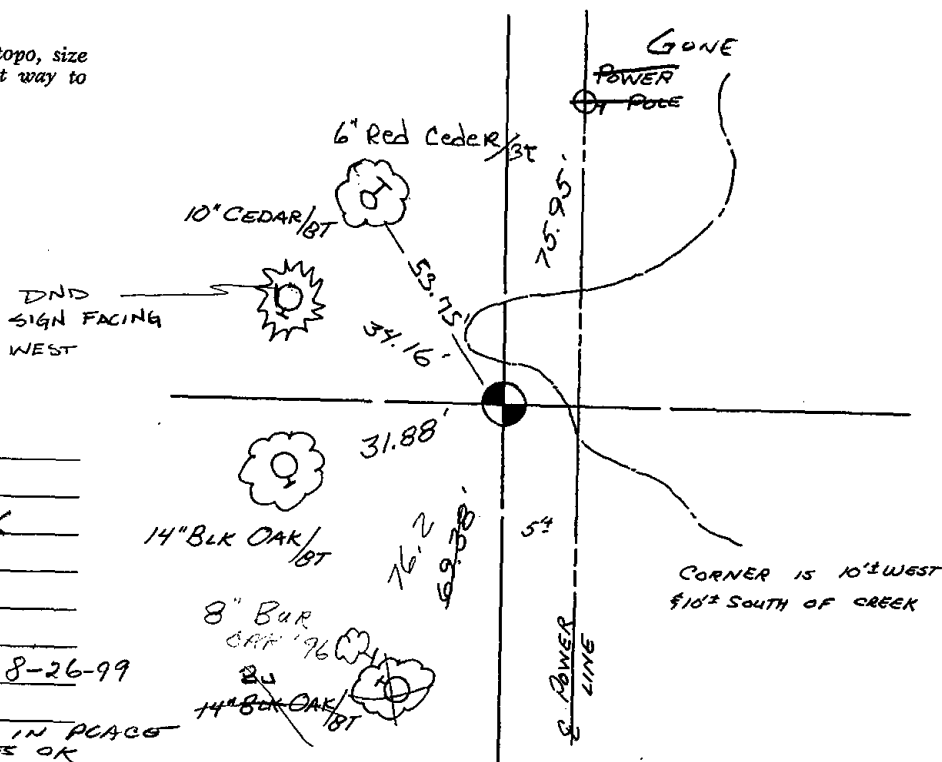
DATA SHOWN HERE ON  
CERTIFIED CORRECT:

*Gregory P Rhinehart*  
Registered Land Surveyor

DATE: 12-22-78

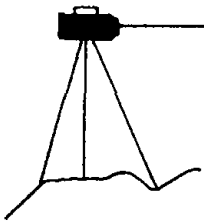
**TIE SKETCH**

Show at least four ties, also fence lines, roads, topo, size and type of witness trees' and if off road - best way to arrive at corner.



**MAINTENANCE RECORD**

Date	Init.	Remarks
12-28-81	RW-SK	MON + TIES O.K
2-3-86	GL-SS	OK
2-12-91	SS-JG	ALL OK
1-17-96	JG-SS	1 GONE / NEW
SEE ATTACHED SHEET, BRENNEMAN, 8-26-99		
2-15-01	MA-JG	ALL OK
5-26-06	SJS	TOP BROKEN - BOTTOM IN PLACE
REVISED 1977 4-15-11	OK	TIES OK



# BRENEMAN'S BLUFFVIEW LAND SURVEYING SERVICES



E 12865 C. T. H. W  
BARABOO, WISCONSIN, 53913  
PHONE 608-356-8780

I hereby certify that I have found the cast iron Harrison monument, and ties, representing the E.  $\frac{1}{4}$  corner, of Section 32, Township 15 North, Range 6 East, Town of Springville, County of Adams, State of Wisconsin, as established by Gregory P. Rhinehart, dated 12-22-1978, and all points are still intact.

John A. Breneman  
JOHN A. BRENEMAN - R.L.S #1274

08-26-1999  
Date

