

## PUBLIC LAND SURVEY MONUMENT RECORD

TYPE OF MONUMENT: HARRISON  
ADAMS COUNTY COORDINATES, NAD 83 (2007)

N. 135581.306

E. 547109.650

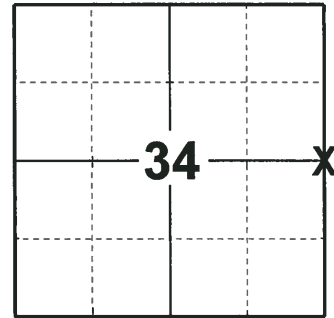
ELEVATION-      DATUM     

FIELD WORK DATE: 07/17/2018

### BASIS FOR MONUMENT LOCATION

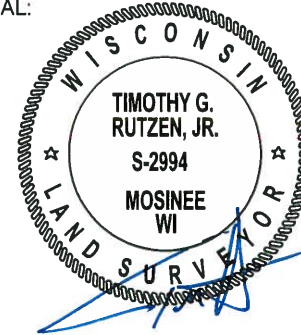
1976 - PLS 922 CHECKED THE ADAMS COUNTY SURVEY RECORDS, THE MOST RECENT RESURVEY WAS DONE BY BARRETT IN 1897. EXCAVATED AND COULD NOT FIND THE CORNER. CALCULATED THE POSITION ON LINE AND EQUIDISTANT BETWEEN THE NW & SW CORNERS PRORATING BARRETT'S DISTANCES. FIT OCCUPATION WITHIN REASON. SET HARRISON AT CALCULATED POSITION AND TIED OUT.

2018 - PLS 2994 FOUND A HARRISON MONUMENT 12" BELOW THE GROUND SURFACE, 1 TIE AND 1 WITNESS. THE MONUMENT AGREES WITH THE EXISTING TIE AND WITNESS. ACCEPTED THE HARRISON MONUMENT AS THE CORNER LOCATION. SET 3 NEW TIES AND MEASURED TO THE TIES AND WITNESS.



LOCATION  
(INDICATE CORNER BY "X")

SEAL:



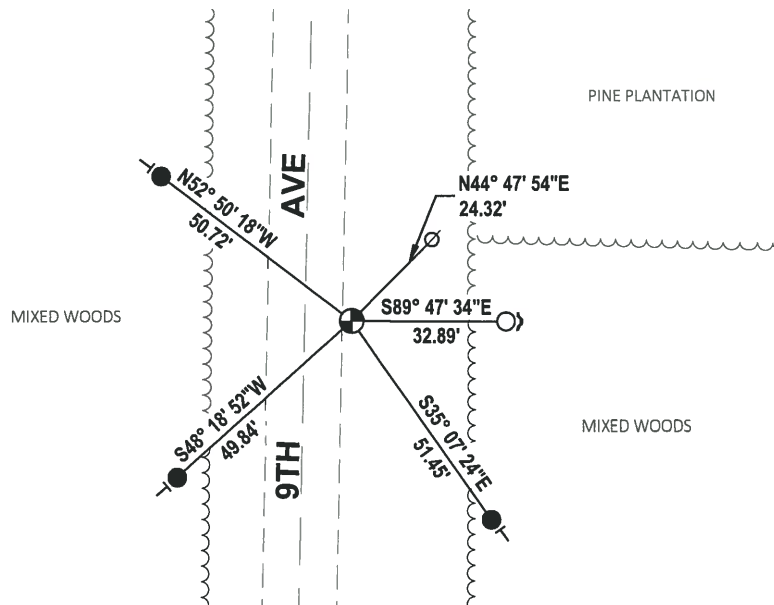
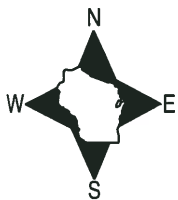
DATA SHOWN HERE ON THIS TIE SHEET IS CORRECT AND COMPLETE TO THE BEST OF MY KNOWLEDGE AND BELIEF.

PROFESSIONAL LAND SURVEYOR

DATE 8-10-18

### - TIE SKETCH

NOTE: THE CORNER FALLS 10'± EAST OF THE CENTERLINE OF 9TH AVE.



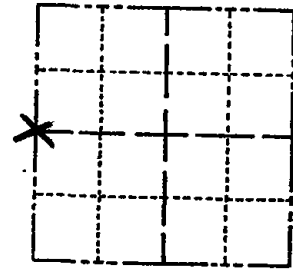
- SET 3/4" x 18" IRON REBAR, 1.50#/FT
- FOUND 3/4" IRON ROD
- ⊙ FOUND HARRISON MONUMENT
- ∅ WITNESS POWER POLE
- ↵ STEEL FENCE POST
- ┌ VINYL "T" POST

# ADAMS COUNTY

## Survey Monument Record

TYPE OF MONUMENT: 30" HARRISON  
 STATE PLANE COORDINATES: N \_\_\_\_\_  
 E \_\_\_\_\_  
 ELEVATION — M.S.L. DATUM: \_\_\_\_\_  
 THETA ANGLE: \_\_\_\_\_  
 FIELD BOOK: \_\_\_\_\_ PAGE \_\_\_\_\_

CORNER NO. 987 (18)  
 SECTION 35  
 TOWN 15N  
 RANGE 6E



LOCATION  
(Indicated by 'X')

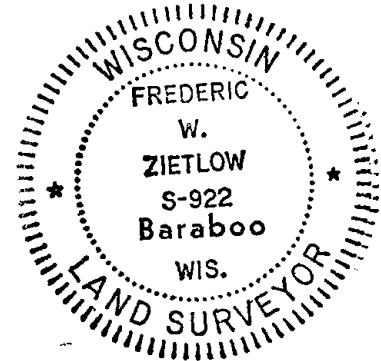
SEAL:

### BASIS FOR MONUMENT LOCATION

(Use reverse side if necessary)

Show info such as: History of corner, with reference to Vol. and pg, dates, surveyor; exact description of monument replaced; if location computed, by taped or EDM traverse; landowner remarks, etc.

CHECKED ADAMS COUNTY SURVEY RECORDS, THE MOST RECENT RESURVEY WAS DONE BY BARRETT IN 1897. WE EXCAVATED AND COULD NOT FIND THE CORNER. WE SET THIS CORNER ON LINE BETWEEN THE NW & SW CORNERS PRORATING BARRETT'S DISTANCES. (SEE SECTION COMPOSITE). FIT OCCUPATION WITHIN REASON. EDM. TRAVERSE.



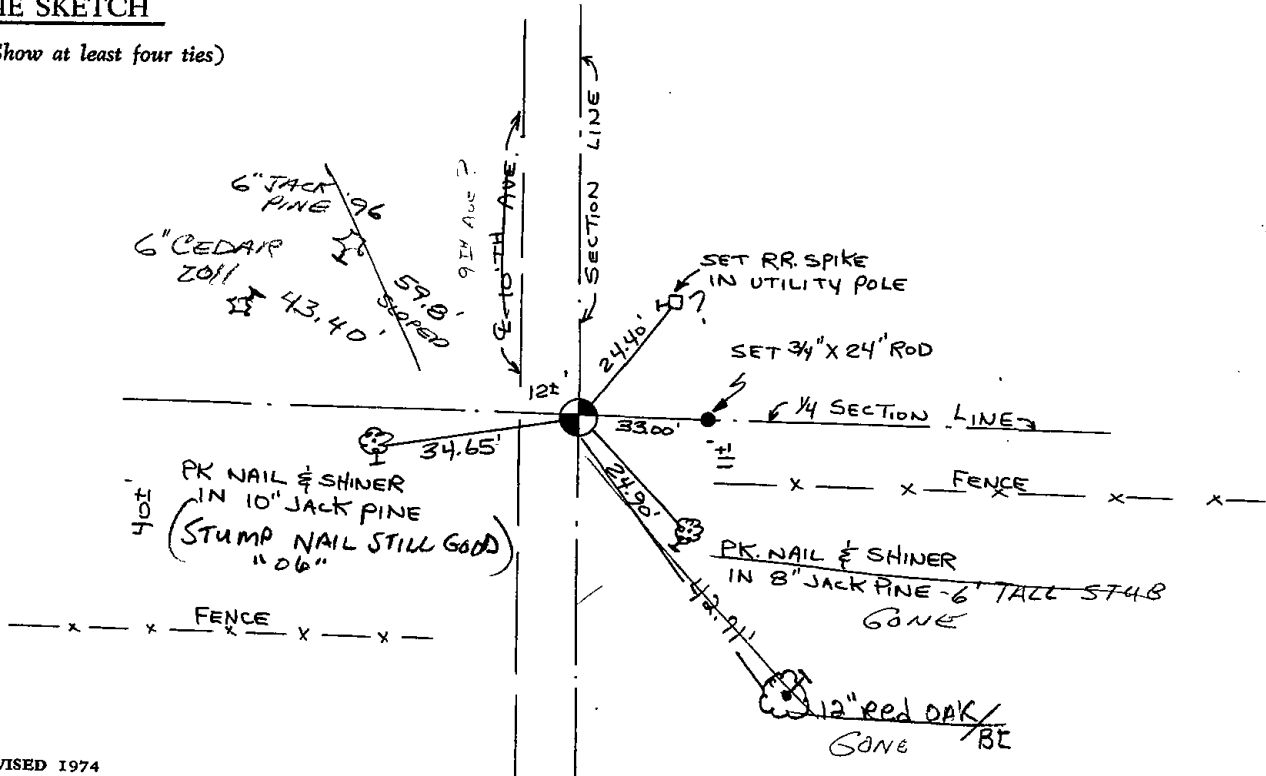
CERTIFIED CORRECT:

*Frederic W. Zietlow*  
 Registered Land Surveyor

DATE: 5-26-76

### TIE SKETCH

(Show at least four ties)



MAINTENANCE RECORD

Date	I.	Remarks
12-28-81	SK-BW	CORNERS O.K.
1-16-86	GR-SS	" "
2-12-91	SS-JG	ALL OK
1-16-96	JG-SS	2-GONE, 1-NEW
2-6-01	JG	OK
5-12-06	JG	OK
01-10-11	GR-SS	1 NEW TILE