

32
SECTION

16
TOWN

07
RANGE

ADAMS COUNTY

COUNTY CORNER NO: 125

ROMPORTOL ID: 41607320000

PUBLIC LAND SURVEY MONUMENT RECORD

TYPE OF MONUMENT: HARRISON
ADAMS COUNTY COORDINATES, NAD 83 (2007)

N. 164712.161

E. 568006.821

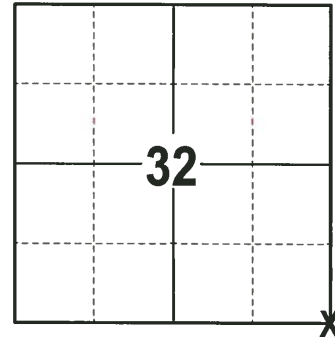
ELEVATION- - - DATUM - -

FIELD WORK DATE: 12/12/2017

BASIS FOR MONUMENT LOCATION

1976 - PLS 1103 RAN EDM/T2 TRAVERSE AROUND SECTION 5 AND PARTS OF ADJOINING SECTIONS TO DETERMINE THE SEARCH AREAS FOR INVESTIGATION. FOUND NO EVIDENCE OF THE ORIGINAL CORNER OR ANY SUBSEQUENT REMONUMENTATION. SET THE CORNER ON A LINE BETWEEN THE NORTH QUARTER CORNER OF SECTION 5 AND THE NORTHEAST CORNER OF SECTION 4, PROPORTIONAL TO THE ORIGINAL DISTANCES ON THE GOVERNMENT NOTES. SET A HARRISON MONUMENT AT THE CORNER LOCATION AND TIED OUT.

2017 - PLS 2994 FOUND A HARRISON MONUMENT FLUSH WITH THE SURFACE AND 2 WITNESS TREES. THE MONUMENT AGREES WITH THE EXISTING WITNESS TREES. ACCEPTED THE HARRISON MONUMENT AS THE CORNER LOCATION. SET 4 NEW TIES AND MEASURED TO THE TIES AND WITNESS TREES.



LOCATION
(INDICATE CORNER BY "X")

SEAL:

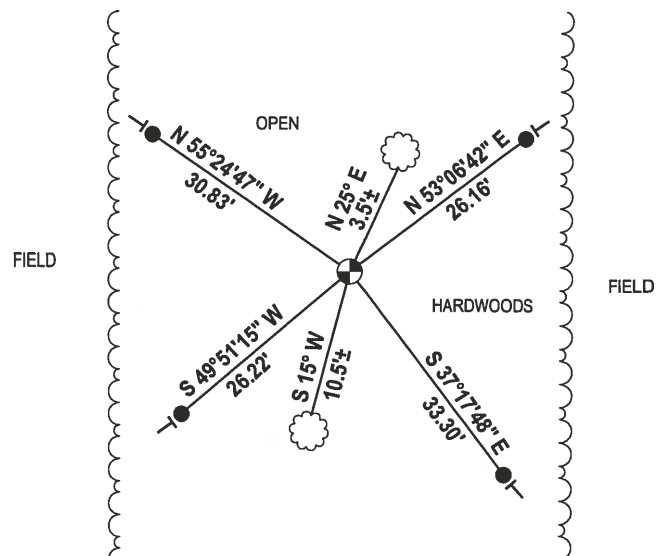
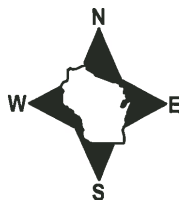


DATA SHOWN HERE ON THIS TIE SHEET IS CORRECT AND COMPLETE TO THE BEST OF MY KNOWLEDGE AND BELIEF.

PROFESSIONAL LAND SURVEYOR

DATE 1-4-18

TIE SKETCH



- 3/4" x 18" IRON REBAR SET, 1.50#/FT
- ⊙ HARRISON FOUND
- VINYL "T" POST
- ☁ WITNESS TREE FOUND

ADAMS COUNTY

Survey Monument Record

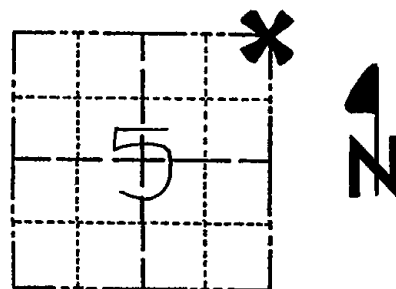
TYPE OF MONUMENT: Standard Harrison
STATE PLANE COORDINATES: N _____
E _____

ELEVATION — M.S.L. DATUM: _____

THETA ANGLE: _____

FIELD BOOK: 38 PAGE 19

CORNER NO. 5
SECTION 5
TOWN 15
RANGE 7



LOCATION
(Indicated by 'X')

SEAL:



BASIS FOR MONUMENT LOCATION

(Use reverse side if necessary)

Show info such as: History of corner, with reference to Vol. and pg, dates, surveyor; exact description of monument replaced; if location computed, by taped or EDM traverse; landowner remarks, etc.

Ran EDM/T2 traverse around section 5 and parts of adjoining sections to determine search area for investigation.

Could find no evidence of the original corner or any subsequent remonumentation.

Set corner on line between the North Quarter corner of Section 5 and the Northeast corner of Section 4 and proportional to the original distances on the government notes.

Harrison set 10-19-76.

CORNER OK 4-1-91 GR-JG

TIES OK 3-7-96 JG-SS

2-21-01 JG-MH-OK

ALL OK, 6-8-06-JG

CERTIFIED CORRECT:

Dale C Hagen
Registered Land Surveyor
DATE: 11-30-76

TIE SKETCH

(Show at least four ties)

NOTE:

Ties in trees to nail in disc.

