

PUBLIC LAND SURVEY MONUMENT RECORD

TYPE OF MONUMENT: HARRISON
 ADAMS COUNTY COORDINATES, NAD 83 (2007)

N. 159334.468

E. 560010.715

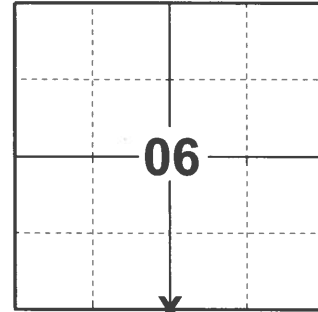
ELEVATION- _____ DATUM _____

FIELD WORK DATE: 03/04/2021

BASIS FOR MONUMENT LOCATION

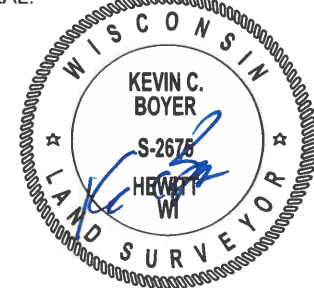
1974 - PLS 922 FOUND A EXISTING P.K. NAIL CENTERLINE OF FERN AVENUE, FIT EDM TRAVERSE.

2021 - PLS 2675 FOUND A HARRISON MONUMENT 3"± BELOW THE SURFACE AND DID NOT RECOVER ANY EXISTING TIES OR WITNESSES. ACCEPTED THE HARRISON AS THE CORNER LOCATION AND SET 4 NEW TIES.



LOCATION
 (INDICATE CORNER BY "X")

SEAL:



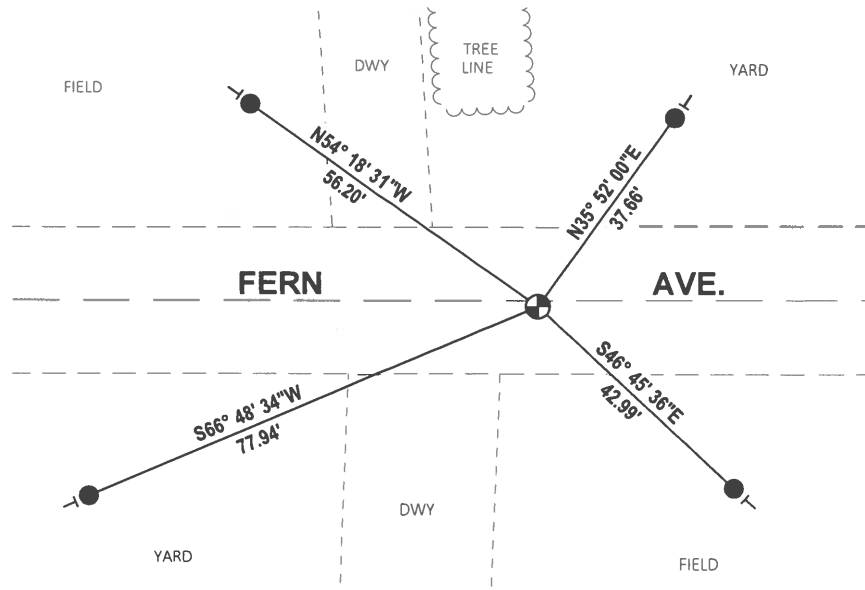
DATA SHOWN HERE ON THIS TIE SHEET IS CORRECT AND COMPLETE TO THE BEST OF MY KNOWLEDGE AND BELIEF.

PROFESSIONAL LAND SURVEYOR

DATE 5/20/21

TIE SKETCH

NOTE: THE CORNER LANDS 1"± SOUTH OF CENTERLINE OF FERN AVE.



- SET 3/4" x 18" IRON REBAR, 1.50#/FT
- ⊙ FOUND HARRISON MONUMENT
- VINYL "T" POST

33 SECTION 16 TOWN 07 RANGE

ADAMS COUNTY

COUNTY CORNER NO: 126
ROMPORTOL ID: 41607330020

PUBLIC LAND SURVEY MONUMENT RECORD

TYPE OF MONUMENT: HARRISON
ADAMS COUNTY COORDINATES, NAD 83 (2007)

N. 164730.644

E. 570631.917

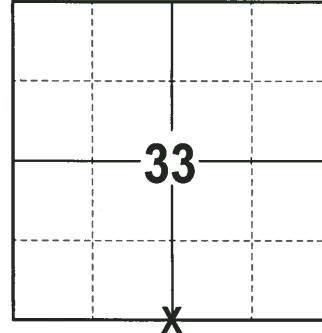
ELEVATION- --- DATUM ---

FIELD WORK DATE: 12/12/2017

BASIS FOR MONUMENT LOCATION

1980 - PLS 878 CORNER SET ON A LINE HALF WAY BETWEEN SECTION CORNERS. NO OTHER EVIDENCE WAS AVAILABLE. THE FENCE LINE EAST AND WEST ARE IN LINE BUT THE FENCE LINE TO THE SOUTH IS ABOUT 12' TO THE WEST. SET HARRISON MONUMENT AT THE CALCULATED LOCATION AND TIED OUT.

2017 - PLS 2994 FOUND A HARRISON MONUMENT FLUSH WITH THE GROUND SURFACE AND 1 WITNESS TREE. THE MONUMENT AGREES WITH THE EXISTING WITNESS TREE. ACCEPTED THE HARRISON MONUMENT AS THE CORNER LOCATION. SET 4 NEW TIES AND MEASURED TO THE TIES AND WITNESS TREE.



LOCATION
(INDICATE CORNER BY "X")

SEAL:

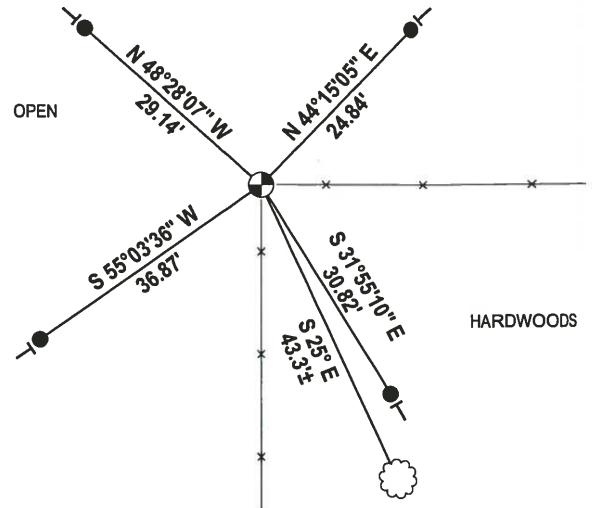
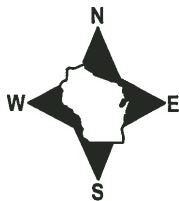


DATA SHOWN HERE ON THIS TIE SHEET IS CORRECT AND COMPLETE TO THE BEST OF MY KNOWLEDGE AND BELIEF.

PROFESSIONAL LAND SURVEYOR

DATE 1-4-18

- TIE SKETCH

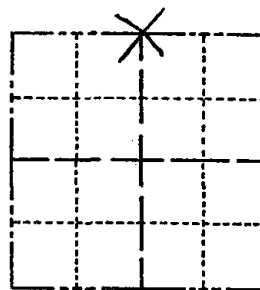


- 3/4" x 18" IRON REBAR SET, 1.50#/FT
- ⊕ HARRISON FOUND
- VINYL "T" POST
- ☼ WITNESS TREE FOUND

Government Land Corner Certificate

Adams County
 TYPE OF MONUMENT: Harrison
 STATE PLANE COORDINATES: N _____
 E _____
 ELEVATION — M.S.L. DATUM: _____
 THETA ANGLE: _____
 FIELD BOOK: 57 PAGE 117
 DRAWN BY: R. NUBER

CORNER NO. 6
 SECTION 4
 TOWN 15
 RANGE 7



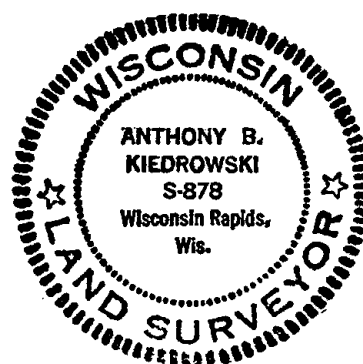
LOCATION
(Indicated by 'X')

BASIS FOR MONUMENT LOCATION

Show info such as: History of corner, with reference to Vol. and pg., dates, surveyor; exact description of monument replaced; if location computed, by taped or EDM traverse; landowner remarks, etc. (Use reverse side if necessary)

1/2 way
 Corner set on line between Section corners because no evidence available, fence line East and West in line, but fence South about 12 feet West. Witnessed new corner, EDM equipment.

SEAL:



DATA SHOWN HERE ON
 CERTIFIED CORRECT:

Anthony B. Kiedrowski
 Registered Land Surveyor

DATE: 8/5/80

4400 S.

TIE SKETCH

Show at least four ties, also fence lines, roads, topo, size and type of witness trees' and if off road - best way to arrive at corner.

