

PUBLIC LAND SURVEY MONUMENT RECORD

TYPE OF MONUMENT: HARRISON
 ADAMS COUNTY COORDINATES, NAD 83 (2007)

N. 164755.640

E. 586459.533

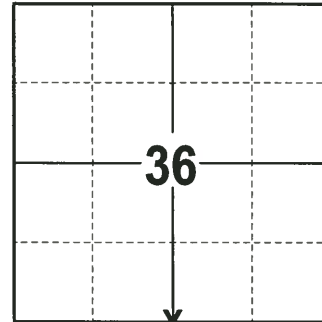
ELEVATION- - - DATUM - -

FIELD WORK DATE: 12/13/2017

BASIS FOR MONUMENT LOCATION

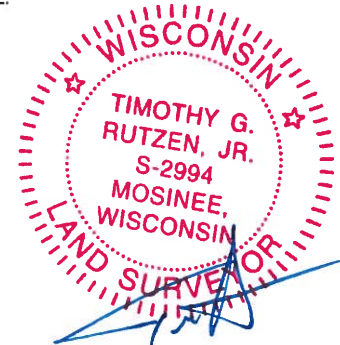
1974 - PLS 970 CORNER SET AT THE INTERSECTION OF A NORTH-SOUTH AND EAST-WEST FENCE LINES. THIS CORNER WAS INCLUDED IN AN EXTENSIVE E.D.M. TRAVERSE. NO OTHER EVIDENCE COULD BE FOUND. A HARRISON MONUMENT WAS SET AT THE BASE OF AN OLD FENCE CORNER POST AND TIED OUT.

2017 - PLS 2994 FOUND A HARRISON MONUMENT FLUSH WITH THE GROUND SURFACE AND 2 WITNESS TREES. THE MONUMENT AGREES WITH THE EXISTING WITNESS TREES. ACCEPTED THE HARRISON MONUMENT AS THE CORNER LOCATION. SET 4 NEW TIES AND MEASURED TO THE TIES AND WITNESSES.



LOCATION
 (INDICATE CORNER BY "X")

SEAL:



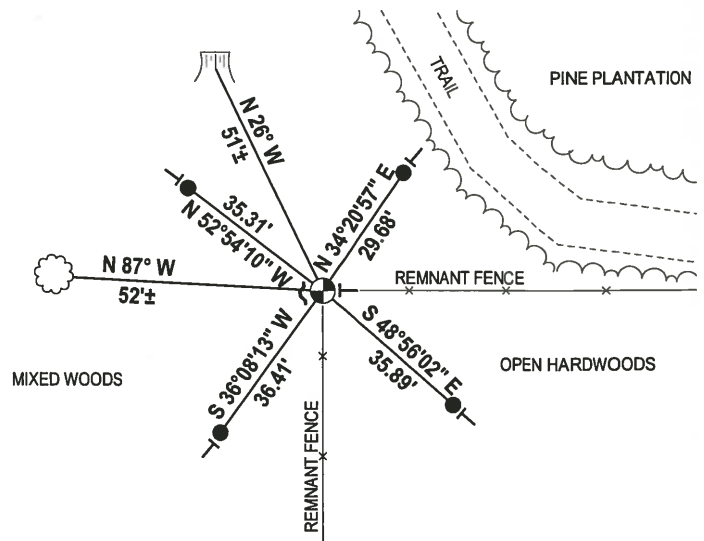
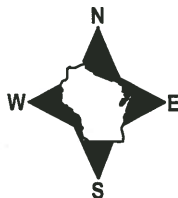
DATA SHOWN HERE ON THIS TIE SHEET IS CORRECT AND COMPLETE TO THE BEST OF MY KNOWLEDGE AND BELIEF.

PROFESSIONAL LAND SURVEYOR

DATE 1-4-18

- TIE SKETCH

NOTE: THE CORNER FALLS 45± SOUTH WEST OF THE CENTERLINE OF THE TRAIL.



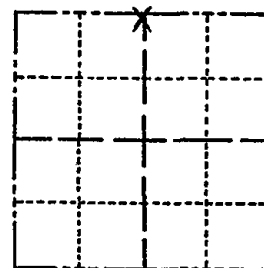
- 3/4" x 18" IRON REBAR SET, 1.50#/FT
- ⊙ HARRISON FOUND
- ~ STEEL FENCE POST
- ┆ VINYL "T" POST
- ☼ WITNESS TREE STUMP FOUND
- ☼ WITNESS TREE FOUND

ADAMS COUNTY

Survey Monument Record

TYPE OF MONUMENT: Harrison
STATE PLANE COORDINATES: N _____
E _____
ELEVATION — M.S.L. DATUM: _____
THETA ANGLE: _____
FIELD BOOK: S-1063 PAGE _____

CORNER NO. 512
SECTION 1
TOWN 15
RANGE 7



LOCATION
(Indicated by 'X')

SEAL:



BASIS FOR MONUMENT LOCATION

(Use reverse side if necessary)

Show info such as: History of corner, with reference to Vol. and pg, dates, surveyor; exact description of monument replaced; if location computed, by taped or EDM traverse; landowner remarks, etc.

CORNER SET AT INTERSECTIONS OF NORTH-SOUTH AND EAST-WEST FENCE LINES.

THIS CORNER WAS INCLUDED IN AN EXTENSIVE E.D.M. TRAVERSE.

NO OTHER EVIDENCE COULD BE FOUND.

MONUMENT SET AT BASE OF OLD FENCE CORNER POST.

Gone '96
Corner ties o.k. ~~have angle~~ *run in* by monument
Enter by trail from 1st Ave. - East - 4-1-76 GRSS
OK 3-27-86 GRSS

CORNER OK, 1-GONE NO SUITABLE TIES DUE TO
OAK WILT 4-1-91 GR-JG
1 NEW TIE 3-11-96 S.S.

2-28-01 JG-OK OK, 3-8-06-JG

CERTIFIED CORRECT:

Dale D. Rice

Registered Land Surveyor

DATE: 12/18/74

TIE SKETCH

3-15-11 SS OK

(Show at least four ties)

