

36 SECTION 16 TOWN 07 RANGE

ADAMS COUNTY

COUNTY CORNER NO: 133
ROMPORTOL ID: 41607360000

PUBLIC LAND SURVEY MONUMENT RECORD

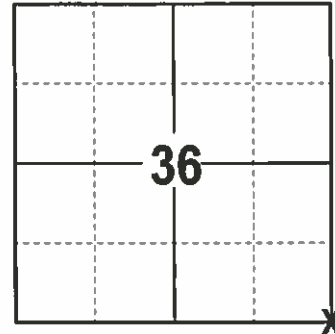
TYPE OF MONUMENT: HARRISON
ADAMS COUNTY COORDINATES, NAD 83 (2007)

N. 164754.633

E. 589113.328

ELEVATION- - - DATUM - -

FIELD WORK DATE: 1/30/2017



LOCATION
(INDICATE CORNER BY "X")

BASIS FOR MONUMENT LOCATION

1974 - PLS 970 SET A HARRISON ON AN EAST-WEST FENCE LINE AT THE APPROXIMATE CENTER OF A NORTH-SOUTH ROAD AND BEING THE SAME DISTANCE FROM THE N1/4 CORNER AS IS THE DISTANCE BETWEEN THE NW CORNER AND THE N1/4 CORNER. LOCATION DETERMINED BY EXTENSIVE TRAVERSE WHICH INCLUDED ALL OTHER CORNERS INVOLVED. NO OTHER EVIDENCE WAS FOUND. MONUMENT WAS SET 6 INCHES BELOW THE ROAD BED.

2017 - PLS 2994 FOUND EXISTING HARRISON 18 INCHES BELOW THE ROAD SURFACE 1 EXISTING TIE. THE HARRISON AGREES WITH THE EXISTING. ACCEPTED THE HARRISON, SET 2 NEW TIES AND REMEASURED TO THE 2 EXISTING TIES.

SEAL:



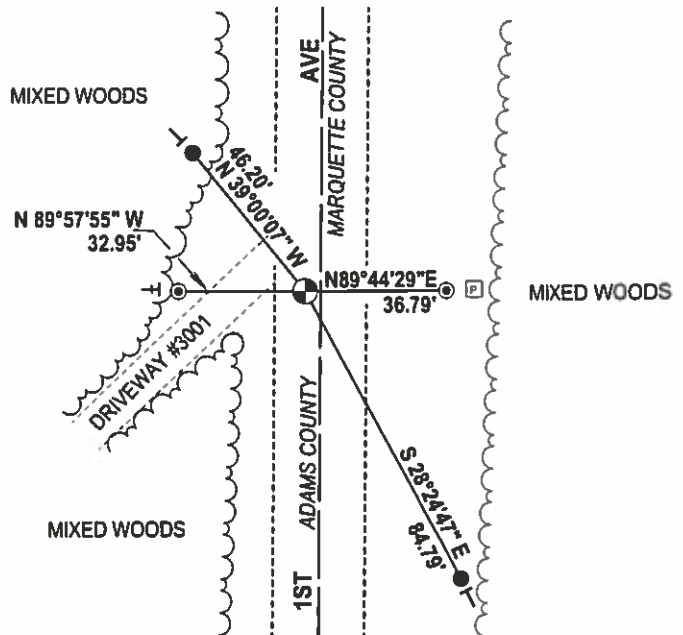
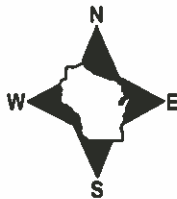
DATA SHOWN HERE ON THIS TIE SHEET IS CORRECT AND COMPLETE TO THE BEST OF MY KNOWLEDGE AND BELIEF.

PROFESSIONAL LAND SURVEYOR

DATE 3/7/17

- TIE SKETCH -

NOTE: THE CORNER FALLS 4' WEST OF THE CENTERLINE OF 1ST AVE.



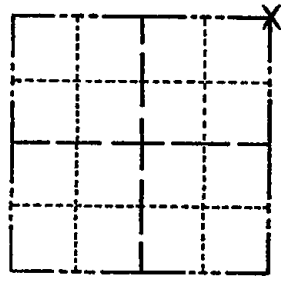
- 3/4" x 18" IRON REBAR SET, 1.50#/FT
- ⊙ FOUND 3/4" IRON REBAR
- ⊕ FOUND HARRISON
- ⊠ 4"x4" POST WITH DND SIGN
- | VINYL "T" POST
- | STEEL "T" POST

ADAMS COUNTY

Survey Monument Record

TYPE OF MONUMENT: Harrison
 STATE PLANE COORDINATES: N _____
 E _____
 ELEVATION — M.S.L. DATUM: _____
 THETA ANGLE: _____
 FIELD BOOK: S-1063 PAGE _____

CORNER NO. 511
 SECTION 1
 TOWN 15
 RANGE 7



LOCATION
(Indicated by 'X')

SEAL:



BASIS FOR MONUMENT LOCATION

(Use reverse side if necessary)

Show info such as: History of corner, with reference to Vol. and pg, dates, surveyor; exact description of monument replaced; if location computed, by taped or EDM traverse; landowner remarks, etc.

CORNER SET ON EAST-WEST FENCE LINE AT APPROXIMATE CENTER OF NORTH-SOUTH ROAD AND BEING THE SAME DISTANCE FROM THE N $\frac{1}{4}$ CORNER AS IS THE DISTANCE BETWEEN THE NW CORNER AND THE N $\frac{1}{4}$ CORNER.

LOCATION DETERMINED BY AN EXTENSIVE E.D.M. TRAVERSE WHICH INCLUDED ALL OTHER CORNERS INVOLVED.

NO OTHER EVIDENCE COULD BE FOUND.

MONUMENT SET AT APPROXIMATELY 6" BELOW SURFACE OF ROAD BED.

Corner 8 ties o.k. times scribbled RT 4-1-76 GR-55
 " " " 2-19-86 GR-55
 1-GONE, 1-NEW CORNER OK 4-1-91 GR-36
 OK 3-11-96 55 OVER →

CERTIFIED CORRECT:

Dale D. Rice

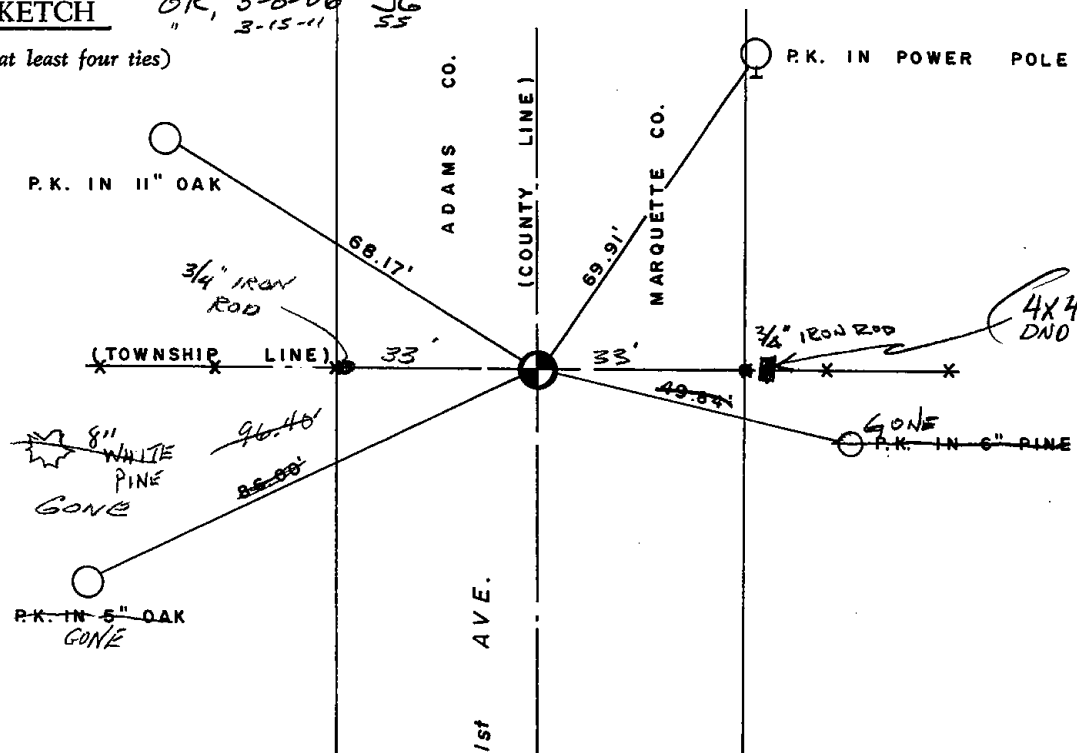
Registered Land Surveyor

DATE: 12/13/74

TIE SKETCH

OK, 3-8-06 - JG
 " 3-15-11 55

(Show at least four ties)



2-21-01 MH 24 16015

10-12-2