

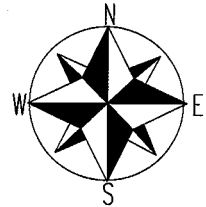
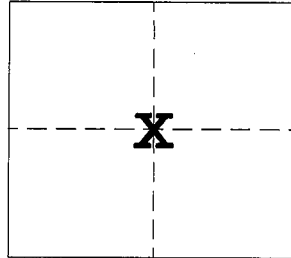
**ADAMS COUNTY
GOVERNMENT LAND CORNER CERTIFICATE**

TYPE OF MONUMENT: 3/4"X18" REBAR
A.C.C.S COORDINATES N: 161948.45
E: 581118.90

ELEV. M.S.L. DATUM:
THETA ANGLE:
FIELD BOOK: PAGE:
DRAWN BY: KELLY D. CALLAWAY

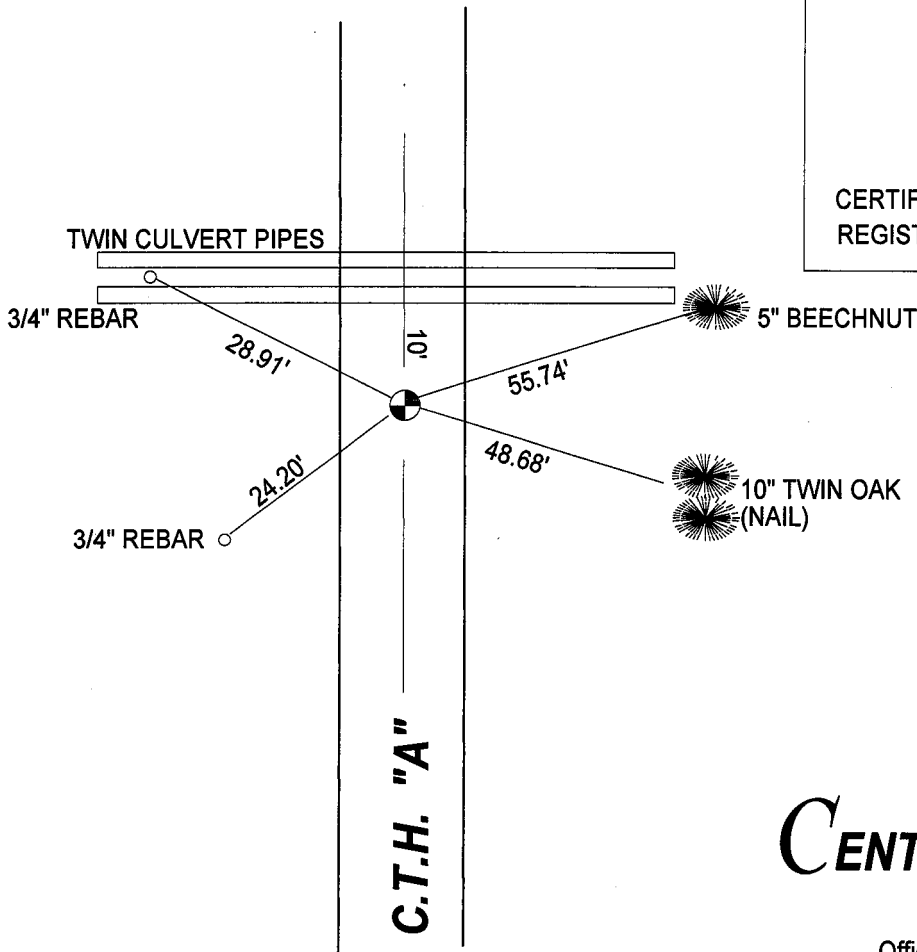
CORNER NO. **18A**

SECTION 2
TOWN 15 NORTH
RANGE 7 EAST



BASIS FOR CORNER LOCATION

July of 2006 I located and tied to this corner which was then taken out due to road construction. I then replaced corner with a 3/4"x18" rebar after completion of road and set new ties as shown.



CENTRAL STAKING INC

2523 Post Road
Stevens Point, WI 54481
Office: 715-345-6904 Fax: 715-345-7728