

02
SECTION

15
TOWN

07
RANGE

ADAMS COUNTY

COUNTY CORNER NO.: 19

ROMPORTOL ID: 41507022000

PUBLIC LAND SURVEY MONUMENT RECORD

TYPE OF MONUMENT: HARRISON (BROKEN-TOP)
ADAMS COUNTY COORDINATES, NAD 83 (2007)

N. 161949.117

E. 583751.122

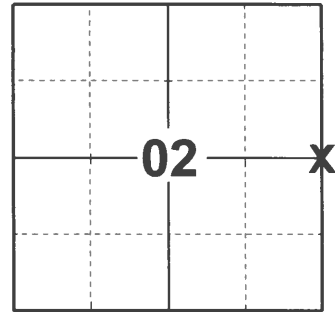
ELEVATION- DATUM

FIELD WORK DATE: 03/01/2021

BASIS FOR MONUMENT LOCATION

1974 - PLS 970 SET CORNER AT THE INTERSECTION OF A STRAIGHT LINE BETWEEN NORTHWEST AND SOUTHWEST SECTION CORNERS AND AN EAST-WEST FENCE LINE. CORNER SET FROM COMPUTED COORINATES THROUGH AN EXTENSIVE E.D.M. TRAVERSE. NO OTHER EVIDENCE COULD BE FOUND.

2021 - PLS 2675 FOUND A HARRISON (BROKEN-TOP) MONUMENT 6" BELOW THE GROUND AND DID NOT RECOVER ANY EXISTING TIES OR WITNESSES. ACCEPTED THE HARRISON (BROKEN-TOP) AS THE CORNER LOCATION AND SET 4 NEW TIES.



LOCATION

(INDICATE CORNER BY "X")

SEAL:

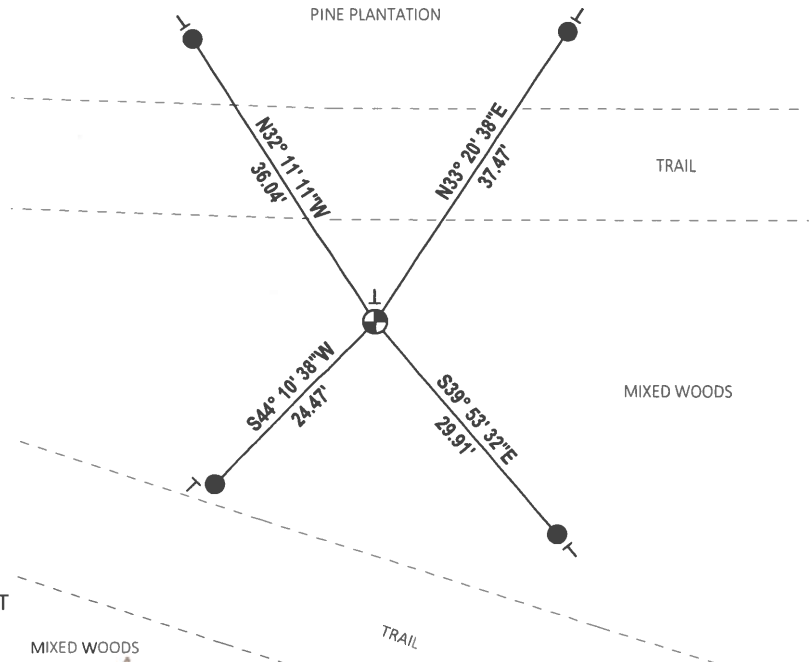


DATA SHOWN HERE ON THIS TIE SHEET IS CORRECT AND COMPLETE TO THE BEST OF MY KNOWLEDGE AND BELIEF.

PROFESSIONAL LAND SURVEYOR

DATE 5/20/21

- TIE SKETCH -



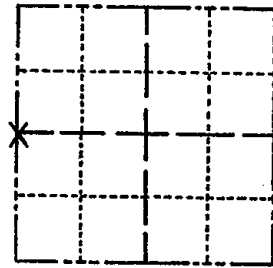
- SET 3/4" x 18" IRON REBAR, 1.50#/FT
- ⊕ FOUND HARRISON (BROKEN-TOP) MONUMENT
- ┌ VINYL "T" POST

ADAMS COUNTY

Survey Monument Record

TYPE OF MONUMENT: Harrison
 STATE PLANE COORDINATES: N _____
 E _____
 ELEVATION — M.S.L. DATUM: _____
 THETA ANGLE: _____
 FIELD BOOK: S-1063 PAGE _____

CORNER NO. 514
 SECTION 1
 TOWN 15
 RANGE 7



LOCATION
(Indicated by 'X')

SEAL:



BASIS FOR MONUMENT LOCATION

(Use reverse side if necessary)

Show info such as: History of corner, with reference to Vol. and pg, dates, surveyor; exact description of monument replaced; if location computed, by taped or EDM traverse; landowner remarks, etc.

CORNER SET AT THE INTERSECTION OF A STRAIGHT LINE BETWEEN NW & SW SECTION CORNERS AND AN EAST-WEST FENCE LINE.

CORNER SET FROM COMPUTED COORDINATES THROUGH AN EXTENSIVE E.D.M. TRAVERSE.

NO OTHER EVIDENCE COULD BE FOUND.

Corner & ties o.k. trees scribed ST 4-1-76 GR-SS
 TOP GONE TIES o.k. 7-16-85 KEN CARLSON
 ALL OK 4-1-91 GR-JG
 O.K. 3-11-96 SS.
 " 2-28-07 SS
 OK 3-8-06-JG
 3-15-11 SS 3 NEW TIES

CERTIFIED CORRECT:

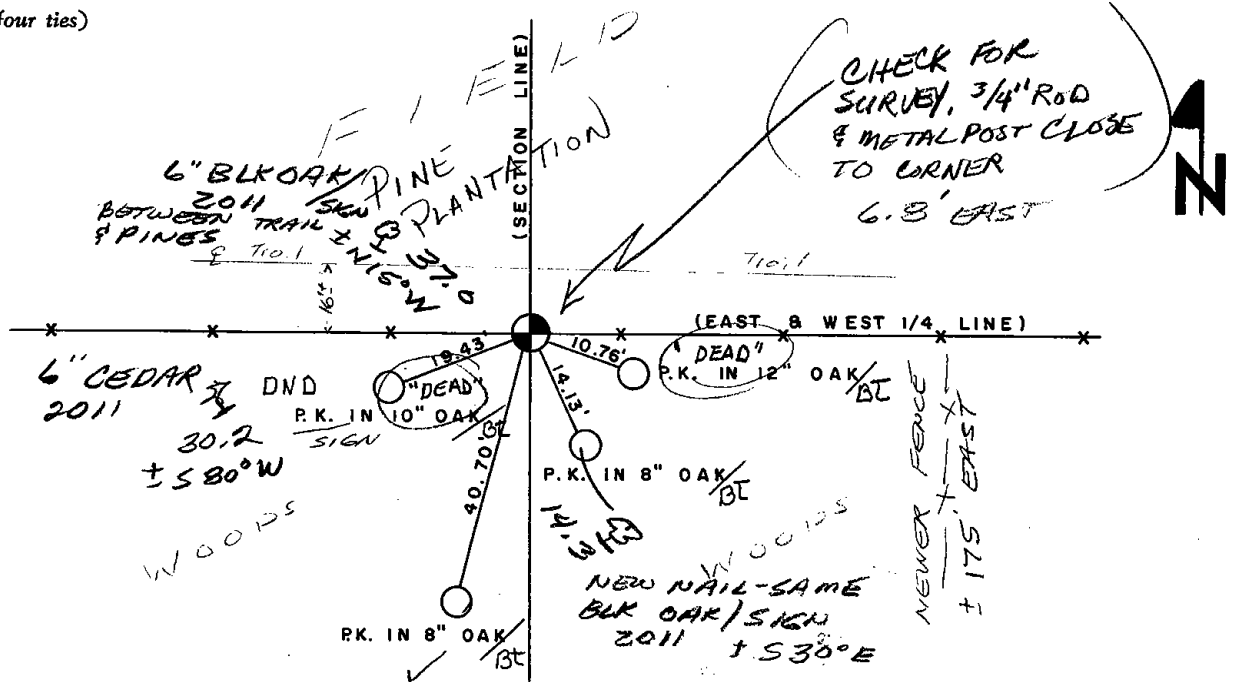
Dale D. Rice

Registered Land Surveyor

DATE: 12/13/74

TIE SKETCH

(Show at least four ties)



MAINTENANCE RECORD

| Date | Init. | Remarks |
|---------|-------|-----------------|
| 9-15-81 | LC-NJ | TIES + MON. OK. |
| | | |
| | | |
| | | |