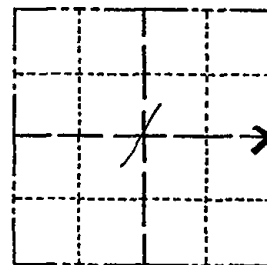


Government Land Corner Certificate

ADAMS County
 TYPE OF MONUMENT: HARRISON
 STATE PLANE COORDINATES: N _____
 E _____
 ELEVATION — M.S.L. DATUM: _____
 THETA ANGLE: _____
 FIELD BOOK: 66 PAGE 59
 DRAWN BY: JOHN S. KEDROWSKI

CORNER NO. 20
 SECTION 1
 TOWN 15 N.
 RANGE 7 E.



LOCATION
 (Indicated by 'X')

BASIS FOR MONUMENT LOCATION

Show info such as: History of corner, with reference to Vol. and pg., dates, surveyor; exact description of monument replaced; if location computed, by taped or EDM traverse; landowner remarks, etc. (Use reverse side if necessary)

Found existing Harrison Monument, with top broken off, 12.05 feet east of a Harrison Monument set by Dale Rice, S-970. The monument found matches center-lines of the traveled ways and dimensions recorded in Adams County Surveyor Records, Vol. 1, pg. 2, by A. J. Barrett on June 6, 1901, and is more nearly on a straight line between adjacent section corners.

SEAL:



DATA SHOWN HERE ON
 CERTIFIED CORRECT:

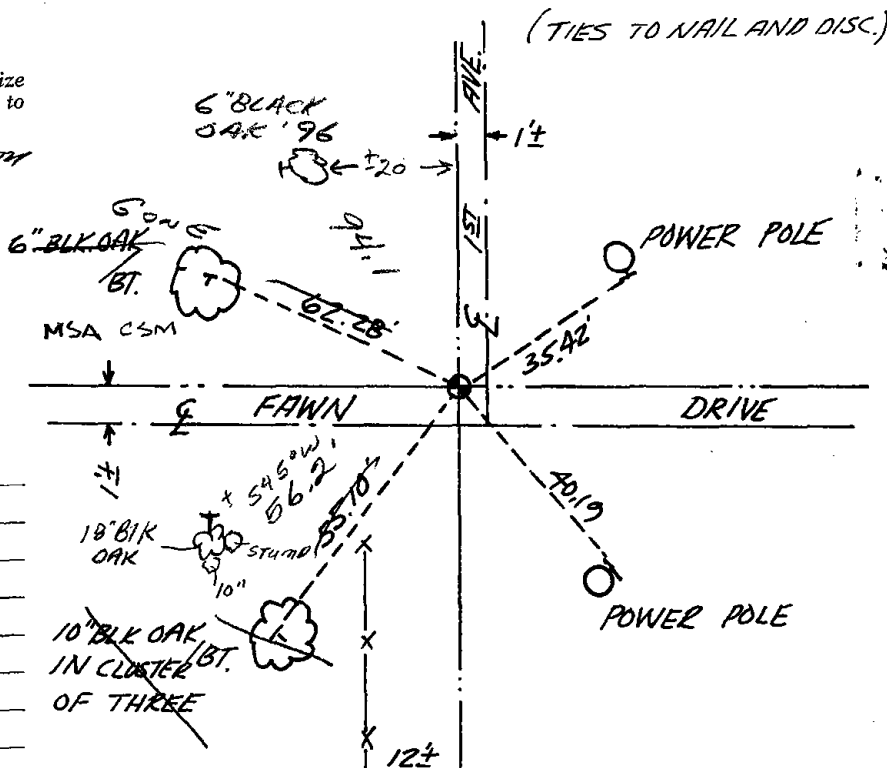
Gregory P Rhinehart
 Registered Land Surveyor

DATE: Nov 17, 1978
for 21, 79

TIE SKETCH

Show at least four ties, also fence lines, roads, topo, size and type of witness trees' and if off road - best way to arrive at corner.

FOUND R.R. SPIKE FLUSH WITH
 ROAD SURFACE - MATCHES
 EXISTING TIES. 196



MAINTENANCE RECORD

Date	Init.	Remarks
9-15-81	NJ-LC	MON & TIES O.K
2-19-86	GR-SS	OK
4-1-91	GR-JG	ALL OK
3-11-96	SS	1 NEW TIE
2-21-01	MH-JG	ALL OK
3-8-06	JG	OK
3-15-11	SS	1 NEW TIE