

05
SECTION

15
TOWN

07
RANGE

ADAMS COUNTY

COUNTY CORNER NO: 24

ROMPORTOL ID: 41705050020

PUBLIC LAND SURVEY MONUMENT RECORD

TYPE OF MONUMENT: HARRISON

ADAMS COUNTY COORDINATES, NAD 83 (2007)

N. 159324.071

E. 565277.205

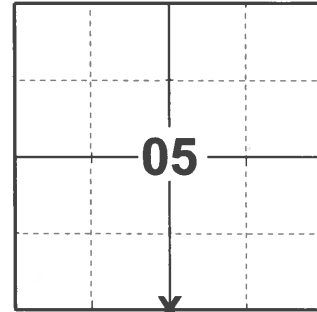
ELEVATION- DATUM

FIELD WORK DATE: 03/03/2021

BASIS FOR MONUMENT LOCATION

1976 - PLS 1103 RAN EDM/T2 AROUND SECTION 8 AND PARTS OF ADJOINING SECTIONS TO DETERMINE SEARCH AREAS FOR INVESTIGATION. EXCAVATION YIELDED NO EVIDENCE OF THE ORIGINAL CORNER OR ANY SUBSEQUENT REMONUMENTATION. RELOCATED CORNER ON LINE AND EQUIDISTANT BETWEEN THE NORTHEAST AND NORTHWEST CORNERS OF SECTION 8. SET HARRISON 07/09/1976.

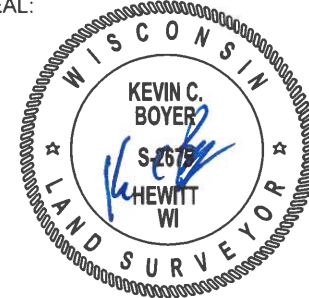
2021 - PLS 2675 FOUND A HARRISON MONUMENT 3"± BELOW THE ROAD SURFACE AND 1 WITNESS. THE MONUMENT AGREES WITH THE WITNESS. ACCEPTED THE HARRISON AS THE CORNER LOCATION. SET 4 NEW TIES AND MEASURED TO THE EXISTING WITNESS.



LOCATION

(INDICATE CORNER BY "X")

SEAL:



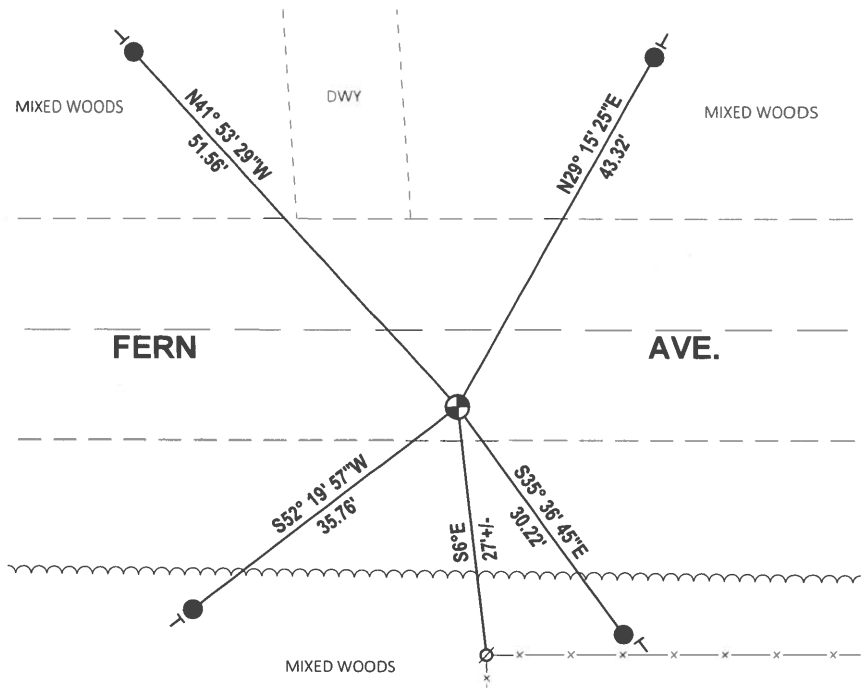
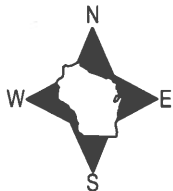
DATA SHOWN HERE ON THIS TIE SHEET IS CORRECT AND COMPLETE TO THE BEST OF MY KNOWLEDGE AND BELIEF.

PROFESSIONAL LAND SURVEYOR

DATE 5/20/21

- TIE SKETCH

NOTE: THE CORNER LANDS 8'± SOUTH OF CENTERLINE OF FERN AVE.



- SET 3/4" x 18" IRON REBAR, 1.50#/FT
- ⊕ FOUND HARRISON MONUMENT
- ⊙ WITNESS POWER POLE CORNER POST
- ┆ VINYL "T" POST

ADAMS COUNTY

Survey Monument Record

TYPE OF MONUMENT: Standard Harrison

STATE PLANE COORDINATES: N _____

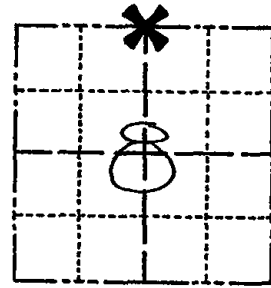
E _____

ELEVATION — M.S.L. DATUM: _____

THETA ANGLE: _____

FIELD BOOK: 37 PAGE 61

CORNER NO. 24 (24)
SECTION 8
TOWN 15
RANGE 7



LOCATION
(Indicated by 'X')

SEAL:

BASIS FOR MONUMENT LOCATION

(Use reverse side if necessary)

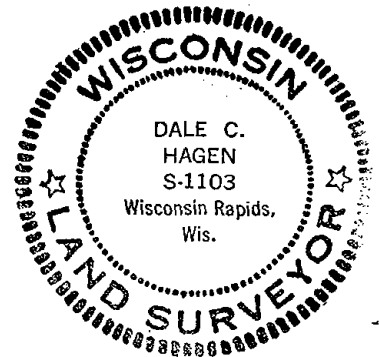
Show info such as: History of corner, with reference to Vol. and pg, dates, surveyor; exact description of monument replaced; if location computed, by taped or EDM traverse; landowner remarks, etc.

Ran EDM/T2 around Section 8 and parts of adjoining sections to determine search areas for investigation.

Excavation yielded no evidence of the original corner or any subsequent remonumentation.

Relocated corner on line and equidistant between the Northeast and Northwest corners of Section 8.

Set Harrison 7-9-76.



CERTIFIED CORRECT:

Dale C. Hagen

Registered Land Surveyor

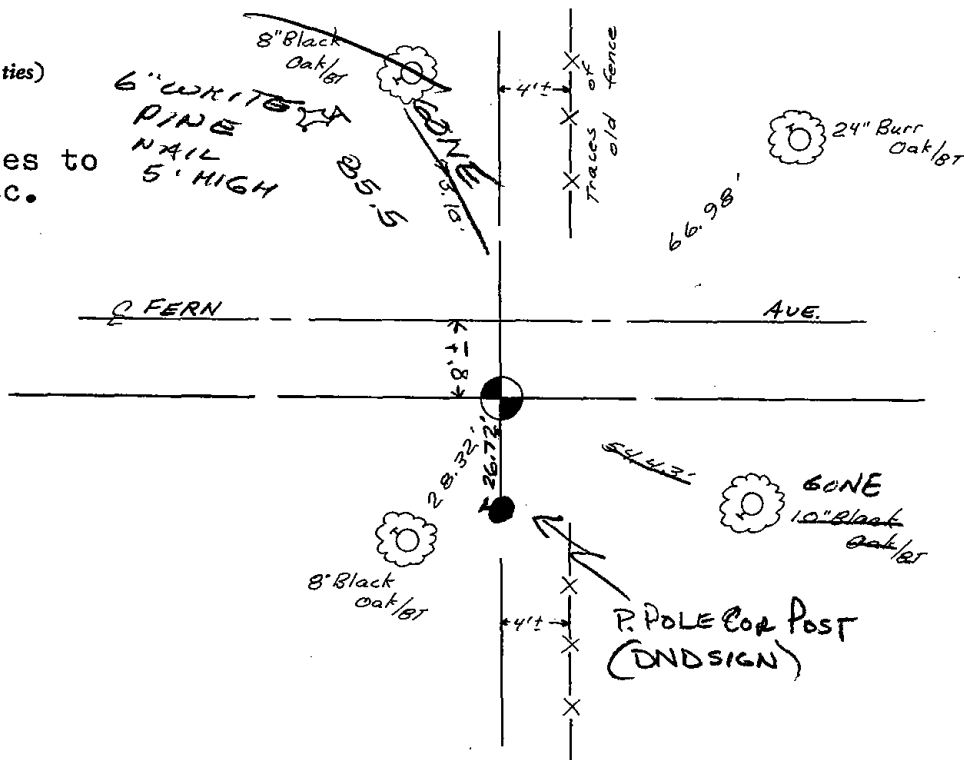
DATE: 11-30-76

TIE SKETCH

(Show at least four ties)

NOTE:

Ties in trees to nail in disc.



MAINTENANCE RECORD

Date	By	Remarks
12-21-81	TH-NJ	TIES O.K
2-3-86	GR-SS	" "
3-26-91	JG	ALL OK
3-7-96	JG-SS	OK
2-16-01	JG	OK
6-8-06	JG	1-GONE, 1-NEW