

05  
SECTION

15  
TOWN

07  
RANGE

# ADAMS COUNTY

COUNTY CORNER NO: 25

ROMPORTOL ID: 41507050000

## PUBLIC LAND SURVEY MONUMENT RECORD

TYPE OF MONUMENT: HARRISON  
ADAMS COUNTY COORDINATES, NAD 83 (2007)

N. 159311.762

E. 567912.568

ELEVATION-          DATUM         

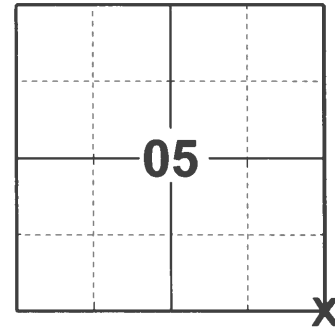
FIELD WORK DATE: 03/03/2021

### BASIS FOR MONUMENT LOCATION

1976 - PLS 1103 RAN EDM/T2 TRAVERSE AROUND SECTIONS 8 AND PARTS OF ADJOINING SECTIONS TO DETERMINE SEARCH AREAS FOR INVESTIGATION. FOUND STUMP HOLE FROM ORIGINAL BEARING TREE (19", W OAK, N 63-1/2 W, 150 LINKS) AND RELOCATED SECTION CORNER FROM STUMP HOLE.

2004 - PLS 1250 FOUND AND ACCEPTED HARRISON MONUMENT SET BY DALE HAGEN, SEPTEMBER 21, 1976.

2021 - PLS 2675 FOUND A HARRISON MONUMENT IN THE ROAD SURFACE AND 3 TIES. THE MONUMENT AGREES WITH ALL 3 TIES. ACCEPTED THE HARRISON AS THE CORNER LOCATION. MEASURED TO A FOUND PROPERTY IRON AND THE EXISTING TIES.



LOCATION

(INDICATE CORNER BY "X")

SEAL:



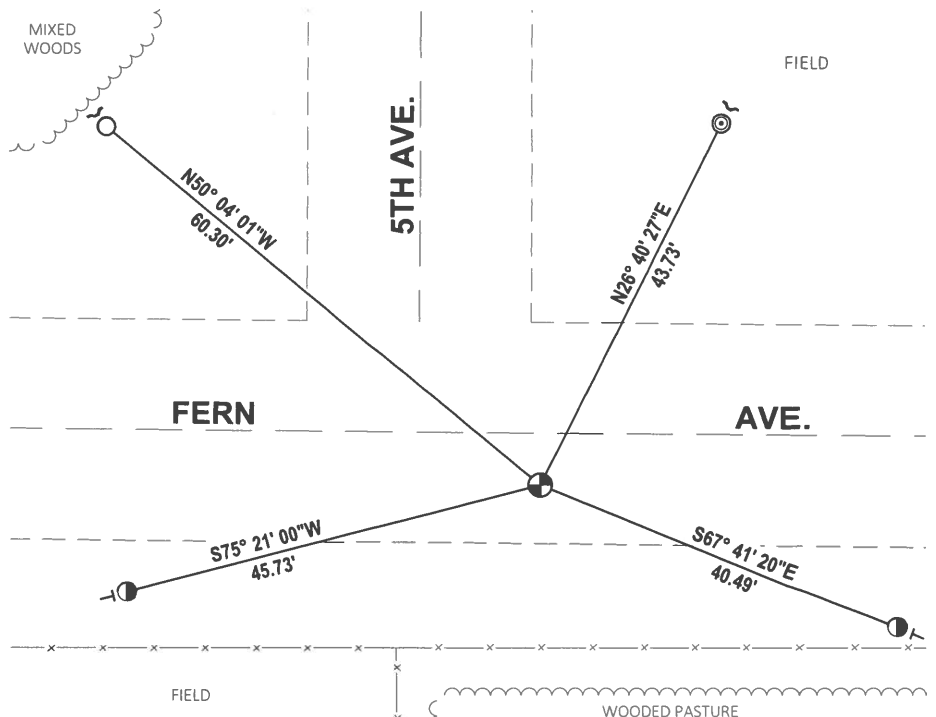
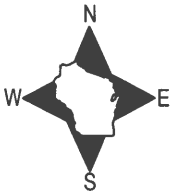
DATA SHOWN HERE ON THIS TIE SHEET IS CORRECT AND COMPLETE TO THE BEST OF MY KNOWLEDGE AND BELIEF.

PROFESSIONAL LAND SURVEYOR

DATE 5/20/21

### - TIE SKETCH

NOTE: THE CORNER LANDS 6'± SOUTH OF CENTERLINE OF FERN AVE.



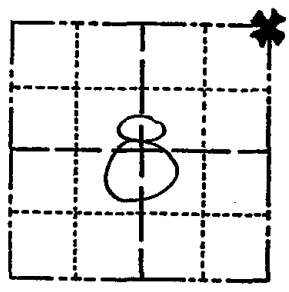
- FOUND 5/8" IRON ROD
- FOUND 3/4" IRON ROD
- ⊙ FOUND 2-3/8" O.D. IRON PIPE
- ⊕ FOUND HARRISON MONUMENT
- ┌ STEEL FENCE POST
- └ VINYL "T" POST

# ADAMS COUNTY

## Survey Monument Record

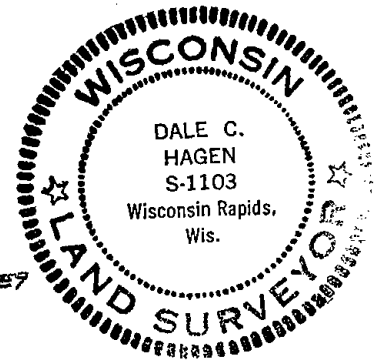
TYPE OF MONUMENT: Harrison  
 STATE PLANE COORDINATES: N \_\_\_\_\_  
 E \_\_\_\_\_  
 ELEVATION — M.S.L. DATUM: \_\_\_\_\_  
 THETA ANGLE: \_\_\_\_\_  
 FIELD BOOK: 37 PAGE 36

CORNER NO. 1048  
 SECTION 8  
 TOWN 15  
 RANGE 7



LOCATION  
(Indicated by 'X')

SEAL:



### BASIS FOR MONUMENT LOCATION

(Use reverse side if necessary)

Show info such as: History of corner, with reference to Vol. and pg, dates, surveyor; exact description of monument replaced; if location computed, by taped or EDM traverse; landowner remarks, etc.

Ran EDM/T2 traverse around Sections 8 and parts of adjoining sections to determine search areas for investigation.

Found stump hole from original bearing tree (19", W Oak, N 63 1/2 W, 150 Links) and relocated section corner from stump hole.

Set 5-27-76.

#### MAINTENANCE RECORD

2-15-11 SS 1 NEW TIE  
 ALSO SEE BOWDEN TIE SHEET  
 DATED 11-18-2004

Date	Surveyor	Remarks
12-21-81	TH-NJ	MON. O.K
2-3-65	GR-SS	2 NEW TIES
3-26-91	JG	ALL OK
11-21-95	SS	OK
2-16-01	JG	OK
11-18-04		SEE ATTACHED - BRUCE BOWDEN

CERTIFIED CORRECT:

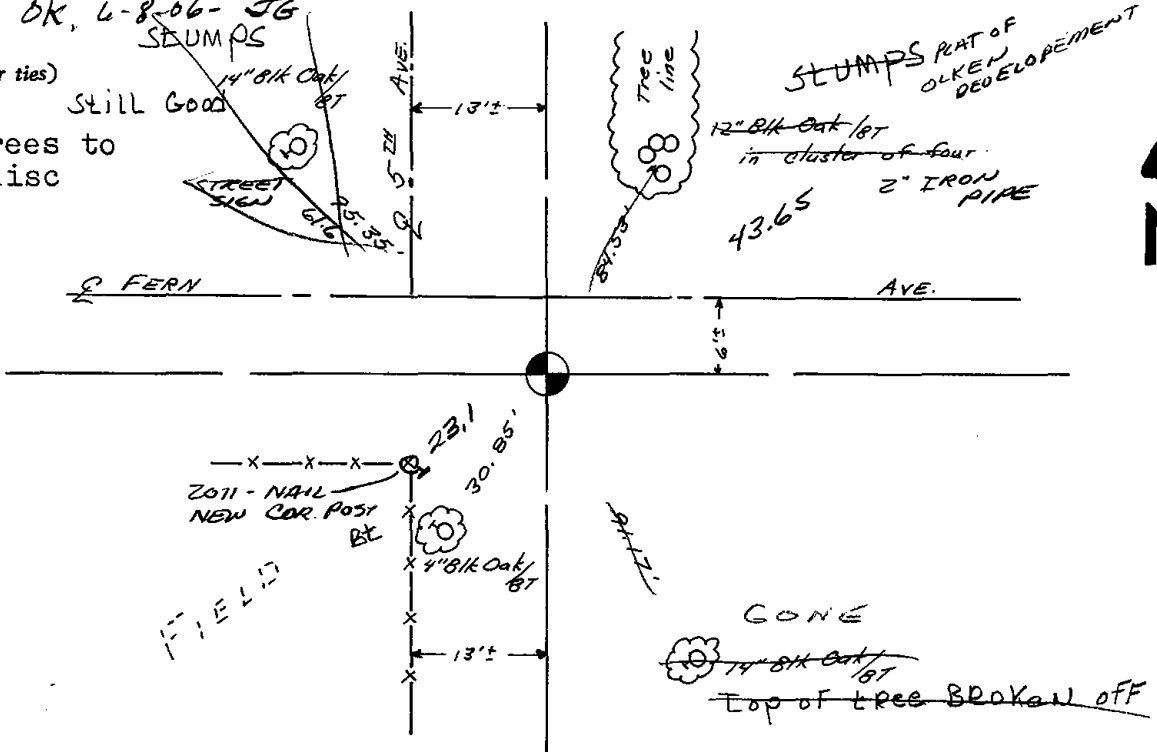
*Dale C. Hagen*  
 Registered Land Surveyor  
 DATE: 9-21-76

### TIE SKETCH

OK, 6-8-06 - JG STUMPS

(Show at least four ties)  
 NOTE:

Ties in trees to nail and disc in blaze.



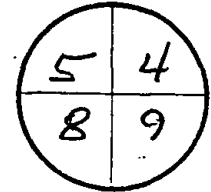
# U.S. PUBLIC LAND SURVEY MONUMENT RECORD

Wisconsin Department of Transportation

DT1291 96 (Replaces ED716)

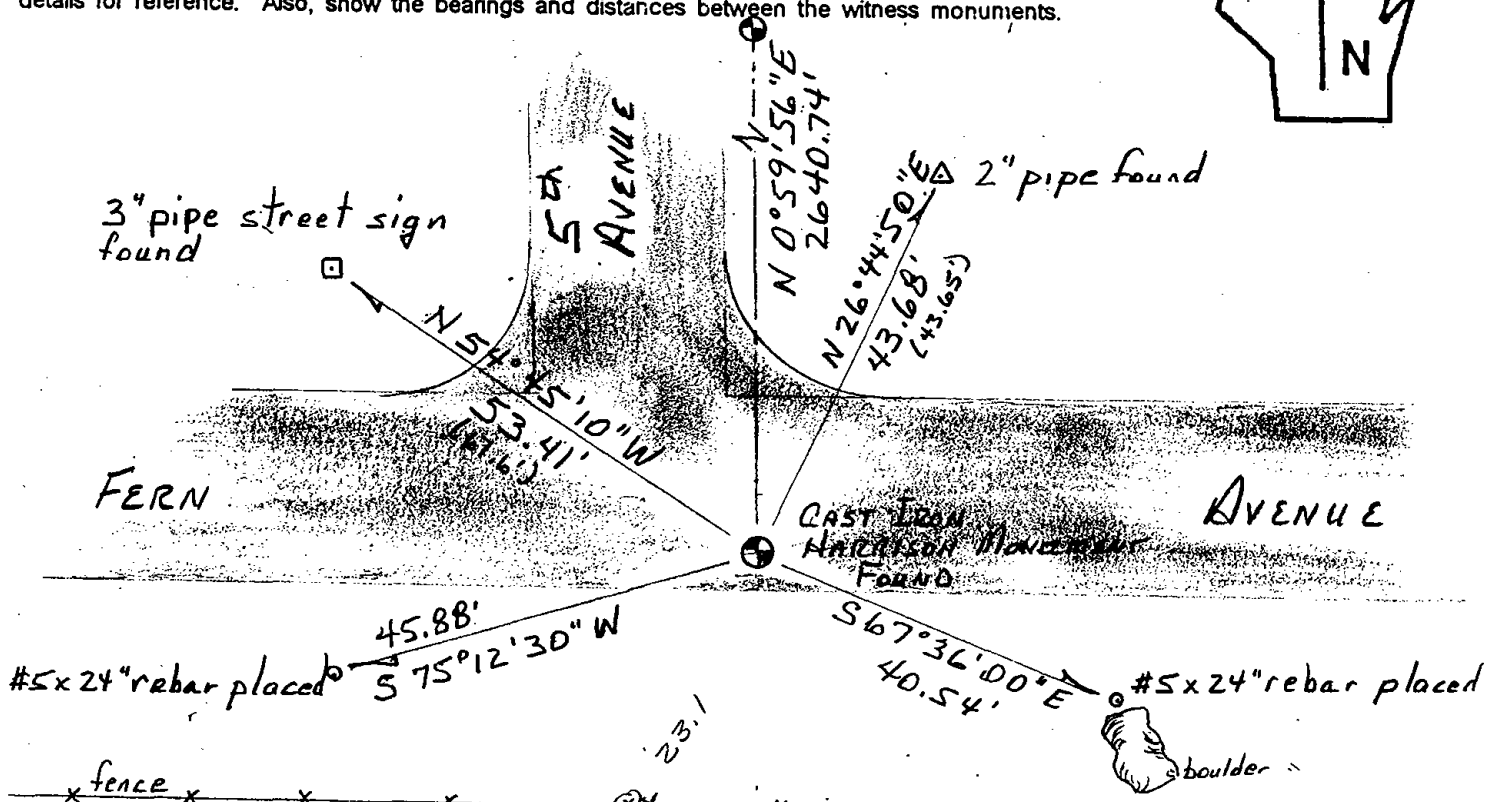
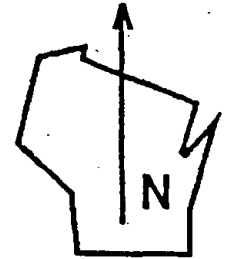
T. 15 N.-R. 7 E.  
4th Principal Meridian  
Corner 25

County Name <b>ADAMS COUNTY</b>		Name of Township / City / Village (Circle One) <b>JACKSON</b>	
Surveyor Name <b>BOWDEN SURVEYING, LTD.</b>			
Address, City, State, Zip Code <b>619 W. MERIZIMAC ST., DODGEVILLE, WI 53533</b>			
X (Easting)	Y (Northing)	Latitude <b>43°48'11.8"</b>	Longitude <b>89°40'42.2"</b>
Project ID		Coordinate ID	



HORIZONTAL DATUM		UNITS		COORDINATE SYSTEM	
<input type="checkbox"/> NAD 27	<input type="checkbox"/> English	<input checked="" type="checkbox"/> Geodetic	<input type="checkbox"/> State Plane	_____ Zone	
<input checked="" type="checkbox"/> NAD 83 (91)	<input type="checkbox"/> Metric	<input type="checkbox"/> County	_____		

Location Diagram, showing corner identification name, bearing and distance references to at least four witness monuments, fence or occupational lines, centerlines of roads, and other site details for reference. Also, show the bearings and distances between the witness monuments.



Indicate fd. = found or pl. = placed in the diagram above  
Bearings used in the location sketch and basis for monument location are assumed, unless as noted.  
Monumentation Legend / Description of Corner and Witness Monuments:

2011 NAIL  
IN NEW FNC  
COR POST

If applicable, show any discrepancy between the location of the corner as restored or re-established and the location of that corner as previously restored or re-established by bearing and distance. Also, show the bearings and distances between the previous corner and at least two of the witness monuments.  
See reverse.

Basis for Monument Location

1. Describe any record evidence, monument evidence, occupational evidence or any other material evidence including traverse measurements that you considered, and whether the monument was found or placed. Explain below, be specific, and attach a separate sheet if necessary.
2. Was the corner:
  - a) found perpetuated,
  - b) restored through acceptance of obliterated evidence,
  - c) relocated by witness testimony, or
  - d) accepted as a remonumented corner of record and maintained with additional monumentation?
3. Was the corner re-established through lost corner proportionate methods? If so, show the method, including the directions and distances to other public land survey corners used as evidence or used in determining the corner location.

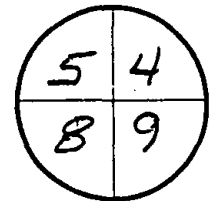
Please Type or Print

1. FOUND AND ACCEPTED HARRISON MONUMENT SET BY DALE HAGEN, SEPT 21, 1976.

2. a) FOUND PERPETUATED

3. No.

T. 15 N.-R. 7 E  
4th Principal Meridian  
Corner 25



Certification BRUCE D. BOWDEN, R.L.S. - 1250

I, (type or print name) certify that the corner location shown on this record was determined by me or under my direction and control and that this U.S. Public Land Survey Monument Record is correct and complete to the best of my knowledge and belief, in accordance with Chapter A-E 7.08 of the Wisconsin Administrative Code.

Section Control Data Sheets have been filed in the County Surveyor's office, showing final measurements by direction and distance between all remonumented corners. Section Control Information is referenced by the following:

Date	Project ID	Sheet(s)

x Bruce D. Bowden  
(Registered Land Surveyor Signature and Number)

Nov 18, 2004  
(Date)

