

04
SECTION

15
TOWN

07
RANGE

ADAMS COUNTY

COUNTY CORNER NO.: 26

ROMPORTOL ID: 41507040020

PUBLIC LAND SURVEY MONUMENT RECORD

TYPE OF MONUMENT: HARRISON
ADAMS COUNTY COORDINATES, NAD 83 (2007)

N. 159319.797

E. 570547.187

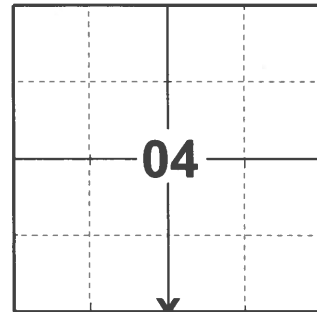
ELEVATION- _____ DATUM _____

FIELD WORK DATE: 03/03/2021

BASIS FOR MONUMENT LOCATION

1977 - PLS 1274 CHECK COUNTY SURVEY RECORDS, FOUND M.C. SMITHS RETRACEMENT NOTES ON SECTION 3 T15N R7E MADE ON OCTOBER 18TH, 1911. RAN EXTENSIVE E.D.M TRAVERSE TO VERIFY LOCATION OF VERY OLD FENCE LINE INTERSECTION FROM NORTH. THIS FENCE LINE FIT 5.22 FEET EAST OF MATCHING SMITHS DISTANCE FROM THE ALREADY FOUND POST AT NORTHEAST CORNER OF THIS SECTION. ASSISTED TONY KIEDROWSKI IN EXCAVATING FOR CORNER. MADE EXCAVATING APPROXIMATELY 6'X10'X3' DEEP. FOUND NO EVIDENCE OF M.C. SMITHS POST. CONTINUED RUNNING E.D.M TRAVERSE WEST TO ESTABLISHED NORTHWEST CORNER SECTION 9. I PLACED THE HARRISON MONUMENT ON A LINE CONNECTING THE ESTABLISHED CORNERS AT THE NORTHWEST AND NORTHEAST OF THIS SECTION WITH THE INTERSECTION OF THE VERY OLD FENCE LINE TO THE NORTH. THE PLACED CORNER FALLS 5± SOUTH OF THE TOWN ROAD.

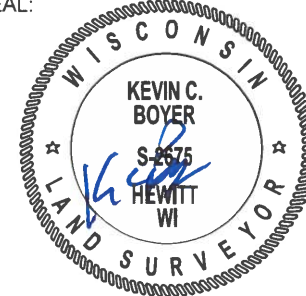
2021 - PLS 2675 FOUND A HARRISON MONUMENT 6± BELOW THE ROAD SURFACE AND 3 TIES. THE MONUMENT AGREES WITH ALL TIES. ACCEPTED THE HARRISON AS THE CORNER LOCATION. SET 2 NEW TIES AND MEASURED TO THE EXISTING TIES.



LOCATION

(INDICATE CORNER BY "X")

SEAL:



DATA SHOWN HERE ON THIS TIE SHEET IS CORRECT AND COMPLETE TO THE BEST OF MY KNOWLEDGE AND BELIEF.

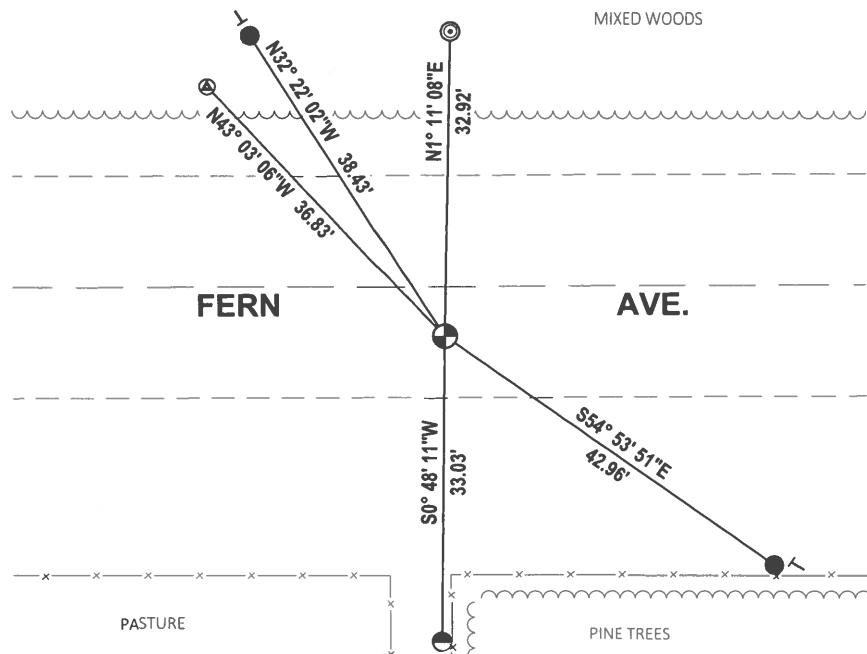
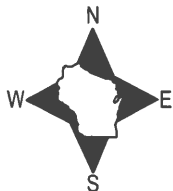
PROFESSIONAL LAND SURVEYOR

DATE 3/20/21

- TIE SKETCH

NOTE1: THE CORNER LANDS 5± SOUTH OF CENTERLINE OF FERN AVE.

NOTE2: 5' TALL 1-1/2" IRON PIPE IN 2-3/8" IRON PIPE



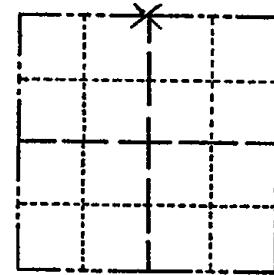
- SET 3/4" x 18" IRON REBAR, 1.50#/FT
- FOUND 7/8" IRON ROD
- ⊙ FOUND 2-3/8" O.D. IRON PIPE
- ⊕ FOUND HARRISON MONUMENT
- ⊗ WITNESS CHISELED "X"
- └ VINYL "T" POST

ADAMS COUNTY

Survey Monument Record

TYPE OF MONUMENT: 30" HARRISON
STATE PLANE COORDINATES: N. _____
E. _____
ELEVATION — M.S.L. DATUM: _____
THETA ANGLE: _____
FIELD BOOK: _____ PAGE _____

CORNER NO. 26
SECTION 9
TOWN 15 N.
RANGE 7 E.



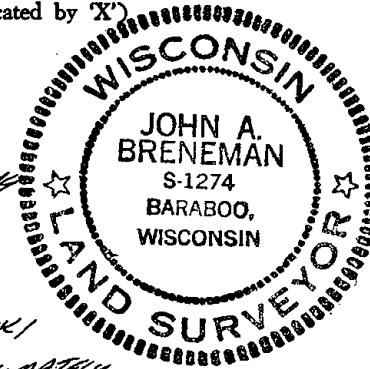
BASIS FOR MONUMENT LOCATION

(Use reverse side if necessary)

Show info such as: History of corner, with reference to Vol. and pg, dates, surveyor; exact description of monument replaced; if location computed, by taped or EDM traverse; landowner remarks, etc.

SEAL:

LOCATION
(Indicated by 'X')



Checked County Survey Records - Found M.C. Smith's
Retractions: Notes on Section 3 T.14N. R.7E Made
18th October 1911. Ran extensive E.O.M. Traverse
to verify location of very old fence line intersecting
from north. This fence line fit 5.22' feet east of
matching Smith's distance from the already found
post at N.E. cor of this section. Assisted Tony Kedrowski
in excavating for corner. Made excavation approximately
6' x 10' x 3' deep found no evidence of M.C. Smith's post.
Continued and ran E.O.M. traverse west to established N.W. cor.
Section 9. I placed the Harrison monument on a line
connecting the established corners at the N.W.
& N.E. of this section with the intersection
of the very old fence line to the north.
The placed corner falls 5'± south of town road.

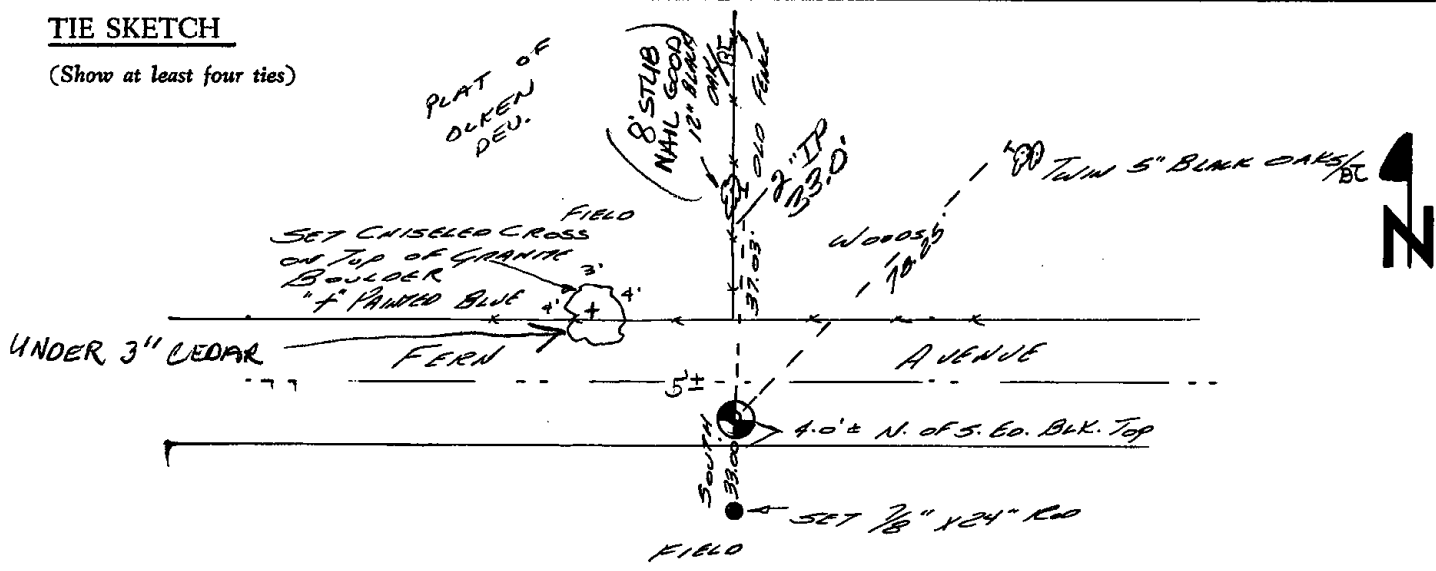
CERTIFIED CORRECT:

John A. Breneman
Registered Land Surveyor

DATE: July 12, 1977

TIE SKETCH

(Show at least four ties)



NOTE:
All TIES TO TREES ARE P. X's
& 5 INCHES IN TREE.

MAINTENANCE RECORD

Date	Name	Remarks
12-21-81	TH-NJ	TIES O.K.
2-3-86	GR-SS	" "
3-26-91	JG	ALL O.K.
11-21-95	SS	OK
2-16-01	JG	OK
		OK