

03
SECTION

15
TOWN

07
RANGE

ADAMS COUNTY

COUNTY CORNER NO: 28

ROMPORTOL ID: 41507030020

PUBLIC LAND SURVEY MONUMENT RECORD

TYPE OF MONUMENT: HARRISON (BROKEN-TOP)

ADAMS COUNTY COORDINATES, NAD 83 (2007)

N. 159323.994

E. 575808.590

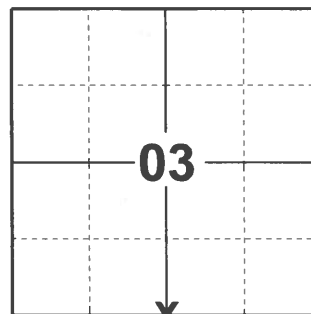
ELEVATION- DATUM

FIELD WORK DATE: 03/02/2021

BASIS FOR MONUMENT LOCATION

1977 - PLS 1274 CHECKED COUNTY SURVEY RECORDS AND NO RESURVEYS WERE ON FILE. FOUND A 1/2" IRON PIPE AT THE CORNER AND MONUMENTED SAME. FIT E.D.M. TRAVERSE OF SECTION GOOD. ADAMS COUNTY SURVEYOR, TONY KIEDROWSKI AGREED WITH THE LOCATION OF THIS MONUMENT.

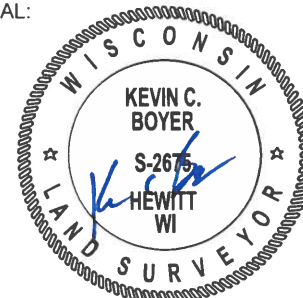
2021 - PLS 2675 FOUND A HARRISON (BROKEN-TOP) 12"± BELOW THE ROAD SURFACE AND DID NOT RECOVER ANY EXISTING TIES OR WITNESSES. ACCEPTED THE HARRISON (BROKEN-TOP) AS THE CORNER LOCATION AND SET 4 NEW TIES.



LOCATION

(INDICATE CORNER BY "X")

SEAL:



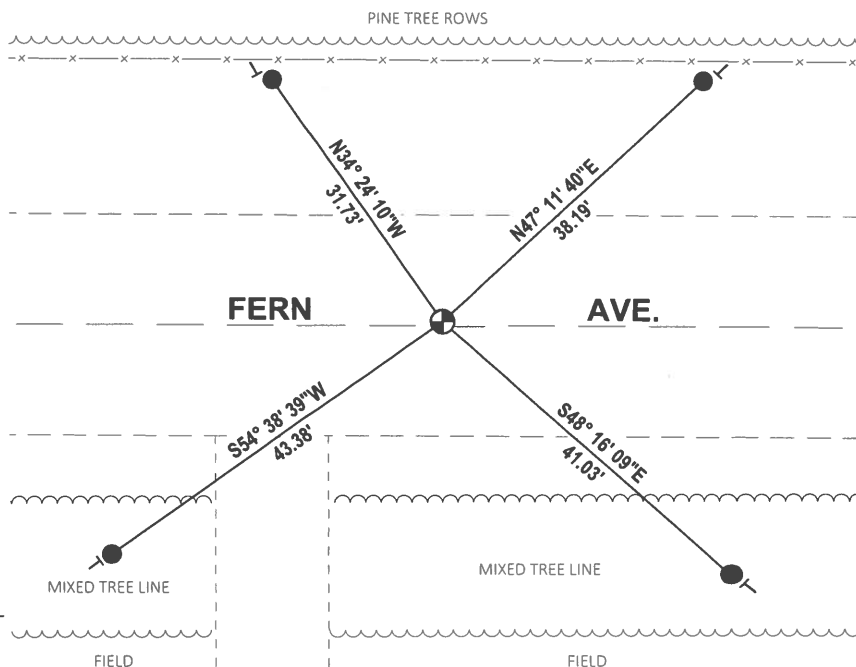
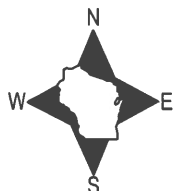
DATA SHOWN HERE ON THIS TIE SHEET IS CORRECT AND COMPLETE TO THE BEST OF MY KNOWLEDGE AND BELIEF.

PROFESSIONAL LAND SURVEYOR

DATE 5/20/21

- TIE SKETCH

NOTE: THE CORNER LANDS 0.5'± NORTH OF CENTERLINE OF FERN AVE.



- SET 3/4" x 18" IRON REBAR, 1.50#/FT
- ⊙ FOUND HARRISON (BROKEN-TOP) MONUMENT
- ⊣ VINYL "T" POST

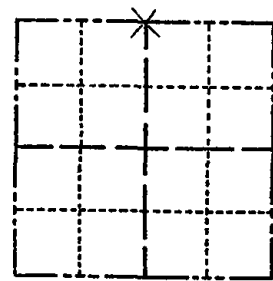
ADAMS COUNTY

Survey Monument Record

TYPE OF MONUMENT: 30" HARRISON Mon.
STATE PLANE COORDINATES: N _____
E _____

ELEVATION — M.S.L. DATUM: _____
THETA ANGLE: _____
FIELD BOOK: _____ PAGE _____

CORNER NO. 28
SECTION 10
TOWN 15 N.
RANGE 7 E.



BASIS FOR MONUMENT LOCATION

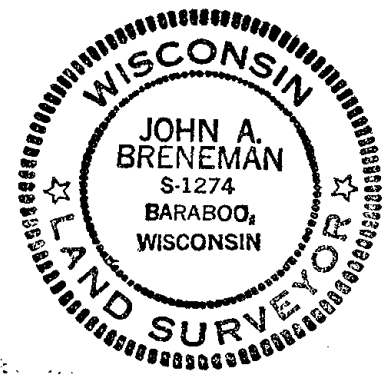
(Use reverse side if necessary)

Show info such as: History of corner, with reference to Vol. and pg, dates, surveyor; exact description of monument replaced; if location computed, by taped or EDM traverse; landowner remarks, etc.

Checked County Survey Records and no Resurveys were on file. Found a 1 1/2" Iron pipe at this corner and monumented same. Fit E.D.M. Traverse of Section 4000. Adams Co. Surveyor, Tony Kiedrowski Agreed with the location of this monument.

LOCATION
(Indicated by 'X')

SEAL:

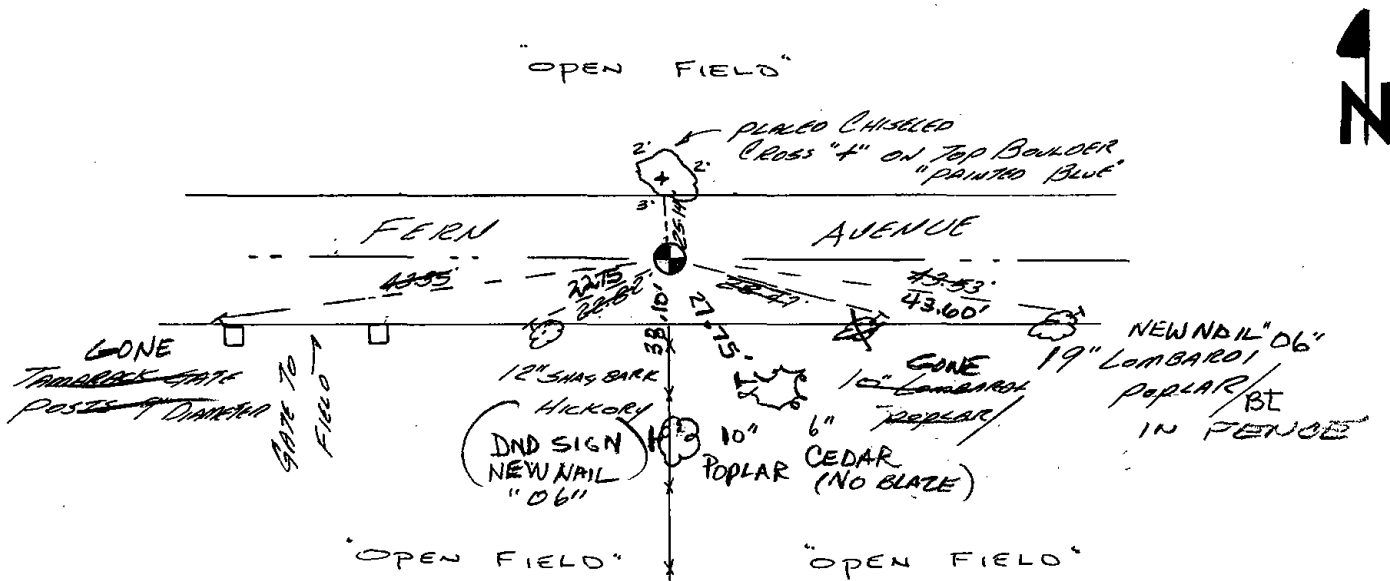


CERTIFIED CORRECT:

John A. Breneman
Registered Land Surveyor
DATE: *July 12, 1977*

TIE SKETCH

(Show at least four ties)



*NOTE ALL TIES IN TREES
EXCEPT PK NAILS AND*

MAINTENANCE RECORD

Date	By	Remarks
12-21-81	THNS	MON. & TIES O.K
2-3-86	GRSS	" OK
3-26-91	JG	ALL OK
11-21-95	SS	OK
2-16-01	JG	OK
6-8-06	JG	2-NEW TIES