

02
SECTION

15
TOWN

07
RANGE

ADAMS COUNTY

COUNTY CORNER NO: 31

ROMPORTOL ID: 41507020000

PUBLIC LAND SURVEY MONUMENT RECORD

TYPE OF MONUMENT: HARRISON
ADAMS COUNTY COORDINATES, NAD 83 (2007)

N. 159329.768

E. 583700.055

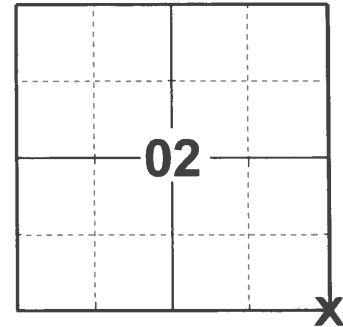
ELEVATION- - - - - DATUM - - - - -

FIELD WORK DATE: 03/01/2021

BASIS FOR MONUMENT LOCATION

1974 - PLS 417 DETERMINED LOCATION BY COMPUTED COORDINATES FROM AN EXTENSIVE TRAVERSE CONNECTING ALL EXISTING MONUMENTS AND EVIDENCE IN ALL OF SECTIONS 12-13. RETRACEMENT OF ORIGINAL SURVEY SHOWS CORNER COMES 165.00 FEET NORTH OF CREEK. CORNER FALLS ON NORTH-SOUTH FENCELINE FROM WEST WOULD INTERSECT. SAID POINT LIES WWEST OF CHICAGO NORTHWEST RAILROAD RIGHT OF WAY.

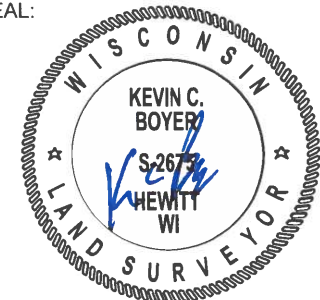
2021 - PLS 2675 FOUND HARRISON MONUMENT FLUSH WITH THE GROUND AND 2 WITNESSES. THE MONUMENT AGREES WITH BOTH WITNESSES. ACCEPTED THE HARRISON AS THE CORNER LOCATION. SET 4 NEW TIES, MEASURED TO A FOUND PROPERTY IRON, AND THE EXISTING WITNESSES.



LOCATION

(INDICATE CORNER BY "X")

SEAL:



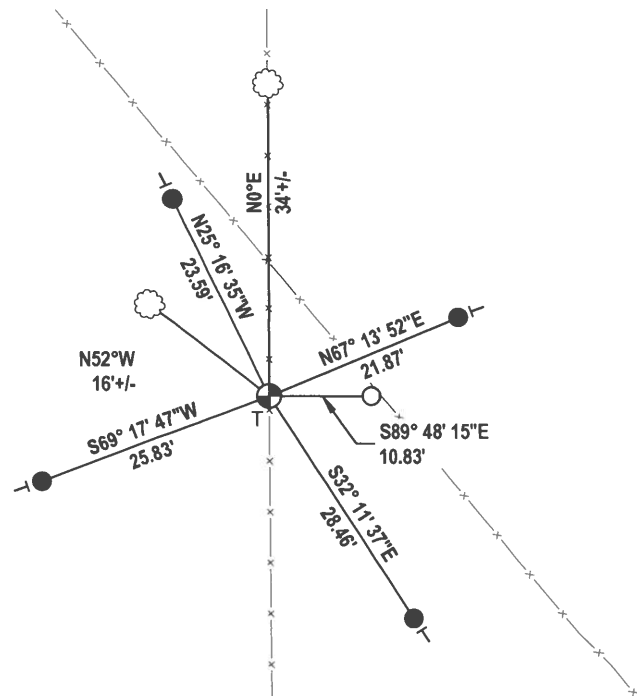
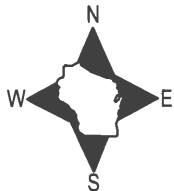
DATA SHOWN HERE ON THIS TIE SHEET IS CORRECT AND COMPLETE TO THE BEST OF MY KNOWLEDGE AND BELIEF.

PROFESSIONAL LAND SURVEYOR

DATE 5/20/21

- TIE SKETCH

NOTE: THE CORNER LANDS 156± SOUTH OF RAILROAD TRACK.



- SET 3/4" x 18" IRON REBAR, 1.50#/FT
- FOUND 3/4" IRON ROD
- ⊕ FOUND HARRISON MONUMENT
- ┌ VINYL "T" POST
- ☁ WITNESS TREE
- x— REMNANT FENCE

ADAMS COUNTY

CORNER NO. 359

Survey Monument Record

SECTION 12

TYPE OF MONUMENT: HARRISON

TOWN 15

STATE PLANE COORDINATES: N _____

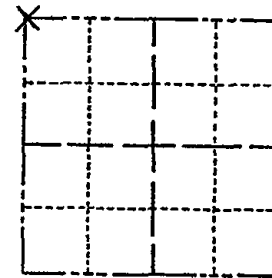
RANGE 7

E _____

ELEVATION — M.S.L. DATUM: _____

THETA ANGLE: _____

FIELD BOOK: 28 PAGE 14-19



LOCATION
(Indicated by 'X')

SEAL:

BASIS FOR MONUMENT LOCATION

(Use reverse side if necessary)

Show info such as: History of corner, with reference to Vol. and pg, dates, surveyor; exact description of monument replaced; if location computed, by taped or EDM traverse; landowner remarks, etc.

Location determined by computed coordinates from an extensive traverse connecting all existing monuments and evidence in all of sections 12-13.

Retracement of original survey shows corner comes 165.00 ft. North of Creek.

Corner falls on N-S fence line at point where fence line from west would intersect.

Said point lies West of Chicago NW R.R. R.O.W.

CORNER O.K. 10-28-76 RN-SS



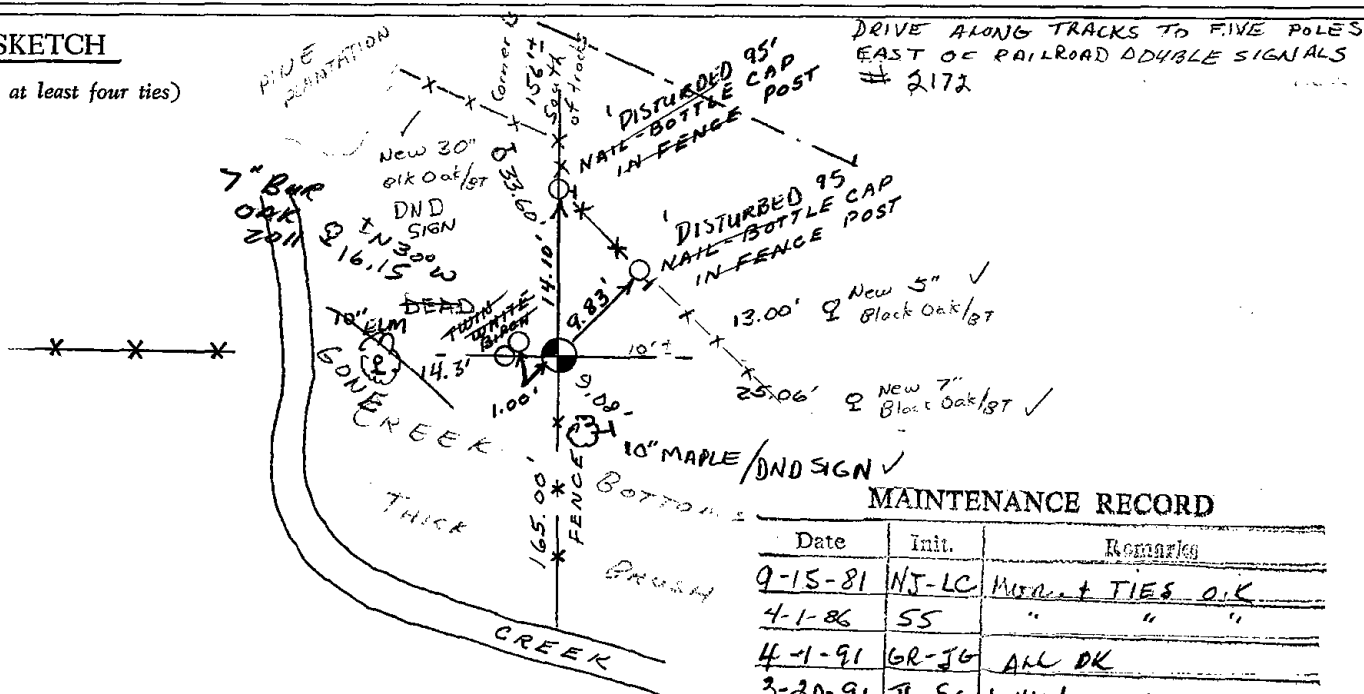
CERTIFIED CORRECT:

R. K. Saylor
Registered Land Surveyor

DATE: 1/15/74

TIE SKETCH

(Show at least four ties)



MAINTENANCE RECORD

Date	Init.	Remarks
9-15-81	NJ-LC	MON. + TIES O.K.
4-1-86	SS	" " "
4-1-91	GR-JG	ALL OK
3-20-96	JG-SS	1-NEW, MON. OK
2-28-01	JG-SS	OK
3-29-06	GPR	1-NEW TIE