

07
SECTION

15
TOWN

07
RANGE

ADAMS COUNTY

COUNTY CORNER NO: 35

ROMPORTOL ID: 41507072000

PUBLIC LAND SURVEY MONUMENT RECORD

TYPE OF MONUMENT: HARRISON
ADAMS COUNTY COORDINATES, NAD 83 (2007)

N. 156701.034

E. 562632.432

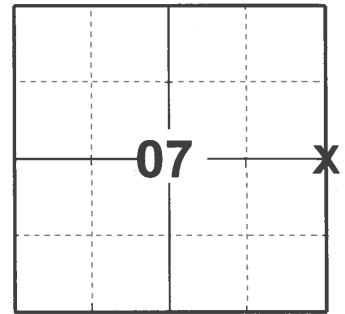
ELEVATION- _____ DATUM _____

FIELD WORK DATE: 03/31/2021

BASIS FOR MONUMENT LOCATION

1976 - PLS 1103 RAN EDM/T2 TRAVERSE AROUND SECTION 8 AND PARTS OF SURROUNDING SECTIONS TO DETERMINE SEARCH AREA. FOUND NO EVIDENCE OF THE ORIGINAL CORNER OR ANY REMONUMENTATION. RELOCATED CORNER ON LINE BETWEEN THE NORTHWEST AND SOUTHWEST CORNERS OF SECTION 8 AND EQUIDISTANT BETWEEN AND TIED OUT.

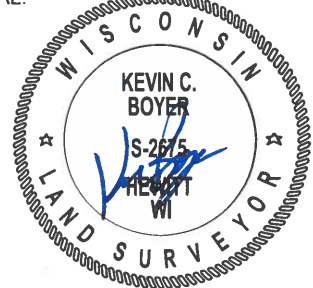
2021 - PLS 2675 FOUND HARRISON MONUMENT 6" BELOW GROUND AND NO EVIDENCE OF EXISTING TIES OR WITNESSES. MONUMENT AGREES WITH BEING ON LINE AND EQUIDISTANT BETWEEN NORTHEAST AND SOUTHEAST CORNERS OF SECTION 7. ACCEPTED HARRISON MONUMENT AS THE CORNER LOCATION. SET 4 NEW TIES AND MEASURED.



LOCATION

(INDICATE CORNER BY "X")

SEAL:



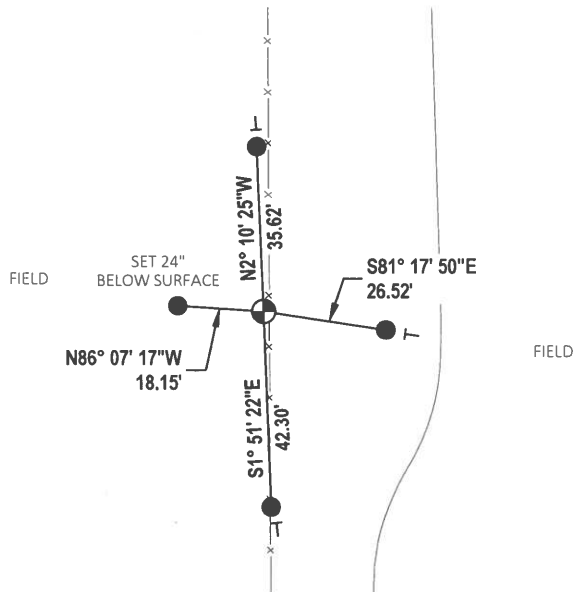
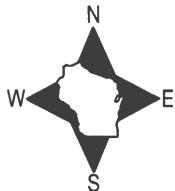
DATA SHOWN HERE ON THIS TIE SHEET IS CORRECT AND COMPLETE TO THE BEST OF MY KNOWLEDGE AND BELIEF.

PROFESSIONAL LAND SURVEYOR

DATE 5/19/21

TIE SKETCH

NOTE: CORNER LANDS 1.2± WEST OF FENCELINE



- SET 3/4" x 18" IRON REBAR, 1.50#/FT
- ⊕ FOUND HARRISON MONUMENT
- VINYL "T" POST

ADAMS COUNTY

Survey Monument Record

TYPE OF MONUMENT: Standard Harrison

STATE PLANE COORDINATES: N _____

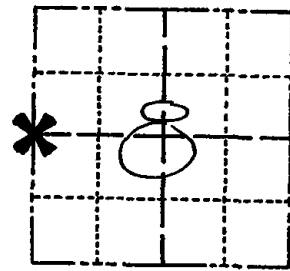
E _____

ELEVATION — M.S.L. DATUM: _____

THETA ANGLE: _____

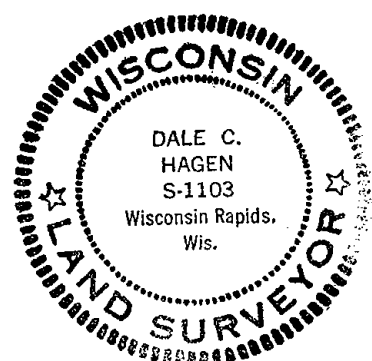
FIELD BOOK: 37 PAGE 60

CORNER NO. 35⁽³⁵⁾
SECTION 8
TOWN 15
RANGE 7



LOCATION
(Indicated by 'X')

SEAL:



BASIS FOR MONUMENT LOCATION

(Use reverse side if necessary)

Show info such as: History of corner, with reference to Vol. and pg, dates, surveyor; exact description of monument replaced; if location computed, by taped or EDM traverse; landowner remarks, etc.

Ran EDM/T² traverse around Section 8 and parts of surrounding sections to determine search areas for investigation.

Could find no evidence of the original corner or any remonumentation. Relocated corner on line between the Northwest and Southwest corners of Section 8 and equidistant between.

Harrison Set 7-9-76.

CERTIFIED CORRECT:

Dale C Hagen
Registered Land Surveyor

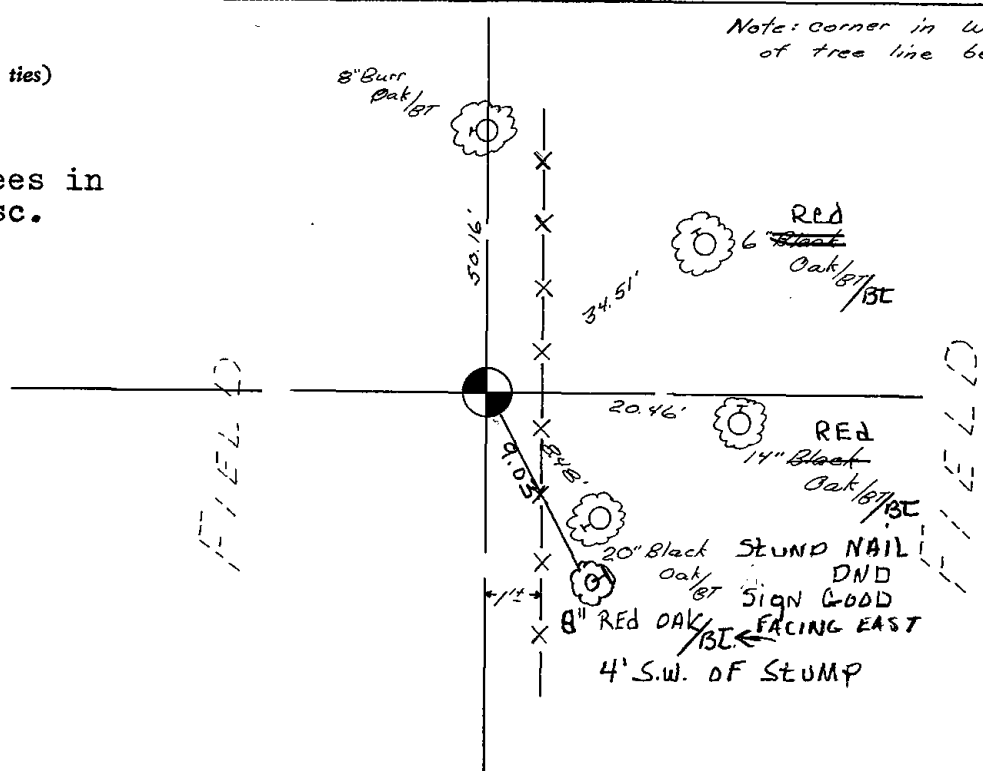
DATE: 11-30-76

TIE SKETCH

(Show at least four ties)

NOTE:

Ties in trees in nail in disc.



Note: corner in West edge of tree line between fields

MAINTENANCE RECORD

Date	Init.	Remarks
12-21-81	TH-NJ	MOW & TIES O.K
3-27-86	GR-SS	" "
6-14-91	JG-CR	" " "
4-19-96	JG-SS	OK
2-21-01	JG-MH	OK
3-27-06	GPR	OK
7-21-11	MS	OK