

PUBLIC LAND SURVEY MONUMENT RECORD

TYPE OF MONUMENT: CALCULATED POSITION
 ADAMS COUNTY COORDINATES, NAD 83 (2007)

N. 156653.587

E. 578391.539

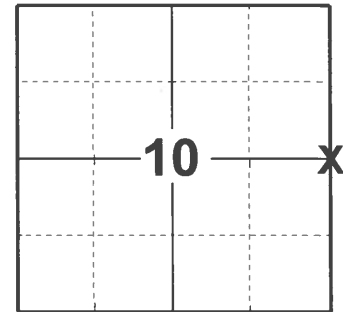
ELEVATION- - - - - DATUM - - - - -

FIELD WORK DATE: 03/08/2021

BASIS FOR MONUMENT LOCATION

1976 - PLS 922 RAN EDM TRAVERSE OF SECTION 11 AND RECOVERED SOME OF M.C. SMITH'S, R. PHILLIP'S, AND H. AMUNDSON'S MONUMENTS ON THE INTERIOR OF SECTION 11. BACKED THOSE CORNERS OUT TO FIT DEED AND OCCUPATION LINES AND MONUMENTED THE SAME TO FIT ALL CONDITIONS THE BEST POSSIBLE WAY.

2021- PLS 2675 FOUND NO EXISTING EVIDENCE OF MEANDER CORNER. CALCULATED POSITION OF CORNER BY HOLDING SECTION SUMMARY DISTANCE OF 1312.38' FROM THE FOUND 16TH CORNER NORTH ON A STRAIGHT LINE BETWEEN THE FOUND 16TH CORNER AND THE SOUTHEAST CORNER OF SECTION 10. CALCULATED POSITION AGREES WITH SECTION SUMMARY DISTANCE BETWEEN THE NORTHEAST AND WEST 1/4 CORNER OF SECTION 10 BY .12'. ACCEPTED CALCULATED POSITION AS CORNER LOCATION. SINCE CORNER LANDS IN GOOSE LAKE NO MEANDER CORNER WAS SET SINCE IT WOULD LAND IN MAINTAINED YARD AND DOES NOT FOLLOW ANY EXISTING PROPERTY LINES.



LOCATION
 (INDICATE CORNER BY "X")

SEAL:



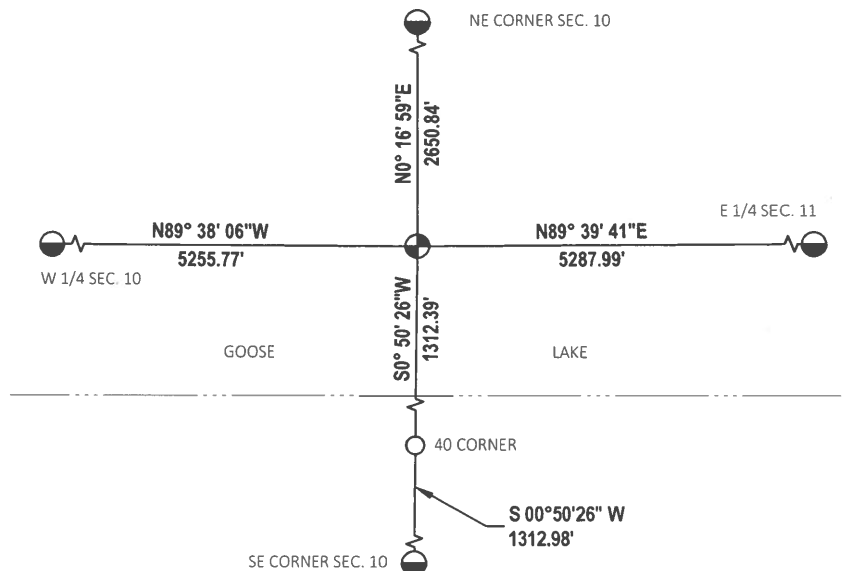
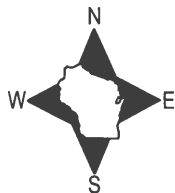
DATA SHOWN HERE ON THIS TIE SHEET IS CORRECT AND COMPLETE TO THE BEST OF MY KNOWLEDGE AND BELIEF.

PROFESSIONAL LAND SURVEYOR

DATE 5/19/21

TIE SKETCH

NOTE: CORNER LANDS IN GOOSE LAKE.



- FOUND 3/4" IRON ROD
- ⊕ CALCULATED POSITION OF CORNER
- FOUND HARRISON MONUMENT

ADAMS COUNTY

Survey Monument Record

TYPE OF MONUMENT: 30" SLIMLINE HARRISON MEANDER CORNER

STATE PLANE COORDINATES: N _____

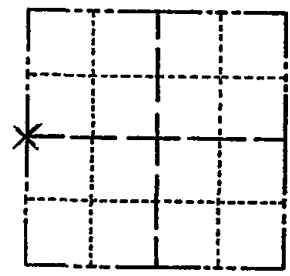
E. _____

ELEVATION — M.S.L. DATUM: _____

THETA ANGLE: _____

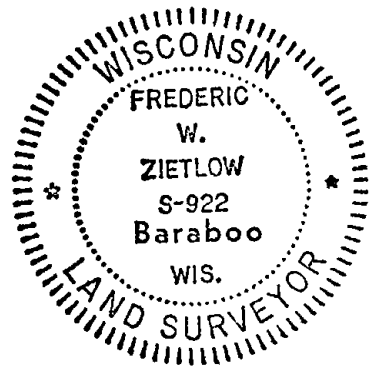
FIELD BOOK: _____ PAGE _____

CORNER NO. 921 (38)
 SECTION 11
 TOWN 15N
 RANGE 7E



LOCATION
(Indicated by 'X')

SEAL:



BASIS FOR MONUMENT LOCATION

(Use reverse side if necessary)

Show info such as: History of corner, with reference to Vol. and pg. dates, surveyor; exact description of monument replaced; if location computed, by taped or EDM traverse; landowner remarks, etc.

CHECKED COUNTY RECORDS FOR RESURVEYS ON FILE & NONE WERE AVAILABLE FOR THE LOCATION OF THIS CORNER. RAN AN EXTENSIVE E.D.M. TRAVERSE OF SECTION 11 & RECOVERED SOME OF M.C. SMITH'S, R. PHILLIPP'S, & H. AMUNDSON'S MONUMENTS ON THE INTERIOR OF THIS SECTION. WE BACKED OUT THESE CORNERS TO FIT DEED & OCCUPATION LINES AND MONUMENTED THE SAME TO FIT ALL CONDITIONS THE BEST POSSIBLE WAY.

CERTIFIED CORRECT:

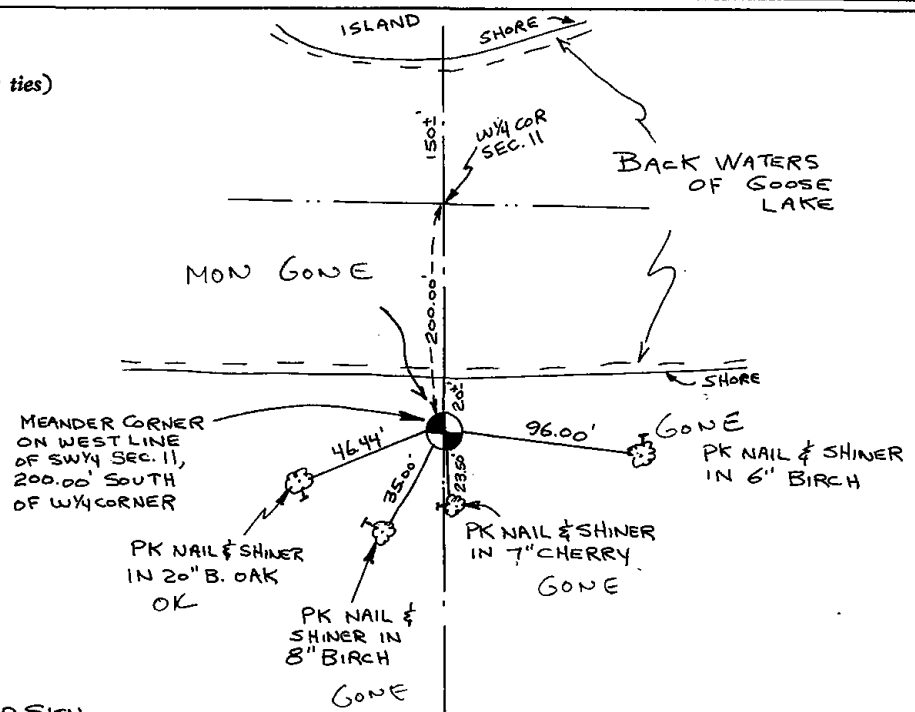
Frederic W. Zietlow

Registered Land Surveyor

DATE: MARCH 16, 1976

TIE SKETCH

(Show at least four ties)



NOTE: SURVEY MARKER SIGN IS NAILED TO 1 1/2" BIRCH S 10° W 4 1/2' FROM M.C.

11-20-91 KZ-JG - ALL TIES BUT 20" BL. OAK GONE
MON IS GONE - CHECK CARLSON SURVEY

8-7-06 - NO CHANGE, NEED TO BE RESURVEYED IN. - JG