

## PUBLIC LAND SURVEY MONUMENT RECORD

TYPE OF MONUMENT: HARRISON  
 ADAMS COUNTY COORDINATES, NAD 83 (2007)

N. 154046.803

E. 573115.130

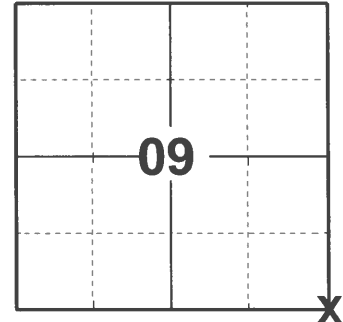
ELEVATION- \_\_\_\_\_ DATUM \_\_\_\_\_

FIELD WORK DATE: 03/08/2021

### BASIS FOR MONUMENT LOCATION

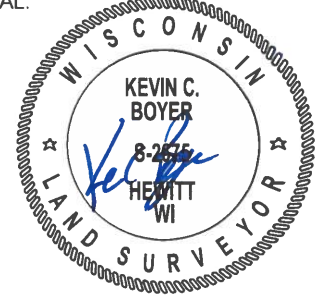
1977 - PLS 1274 RAN EDM TRAVERSE AROUND ALL OF SECTION 10 TO DETERMINE SEARCH AREA FOR CORNER. FOUND NO EVIDENCE OF EXISTING CORNER OR TIES. RAN LINE BETWEEN THE SOUTH 1/4 CORNER OF SECTION 9 AND THE SOUTHEAST CORNER OF SECTION 10 AND A PROPORTIONED DISTANCE ALONG THIS LINE. THE PROPORTIONED DISTANCE PLACED THE CORNER LOCATION AT THE CENTERLINE OF 4TH AVE. BY PLACING THE CORNER AT THIS POINT THE DISTANCE ALONG THE SOUTH LINE OF SECTION 10 FITS WITHIN 2' AND THE DISTANCE ALONG THE WEST LINE OF SECTION 10 WITHIN 0.44'.

2021 - PLS 2675 FOUND HARRISON MONUMENT 4" BELOW ROAD SURFACE AND NO EVIDENCE OF EXISTING TIES OR WITNESSES. ACCEPTED THE HARRISON MONUMENT AS THE CORNER LOCATION. SET 4 NEW TIES AND MEASURED. MEASURED TO AN EXISTING PROPERTY IRON.



**LOCATION**  
 (INDICATE CORNER BY "X")

SEAL:



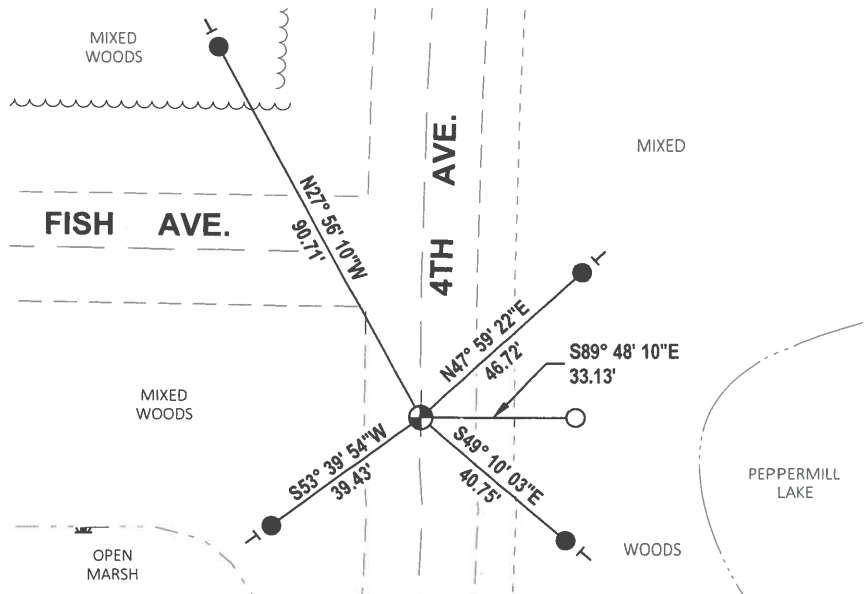
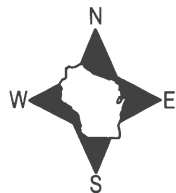
DATA SHOWN HERE ON THIS TIE SHEET IS CORRECT AND COMPLETE TO THE BEST OF MY KNOWLEDGE AND BELIEF.

PROFESSIONAL LAND SURVEYOR

DATE 5/19/21

### TIE SKETCH

NOTE: CORNER LANDS ON THE CENTERLINE OF 4TH AVE.



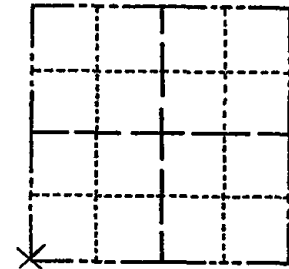
- SET 3/4" x 18" IRON REBAR, 1.50#/FT
- FOUND 3/4" IRON ROD
- ⊕ FOUND HARRISON MONUMENT
- VINYL "T" POST

ADAMS COUNTY

Survey Monument Record

TYPE OF MONUMENT: 30" Harrison Mon.
STATE PLANE COORDINATES: N
E
ELEVATION - M.S.L. DATUM:
THETA ANGLE:
FIELD BOOK: PAGE

CORNER NO. 47
SECTION 10
TOWN 15 N
RANGE 7 E



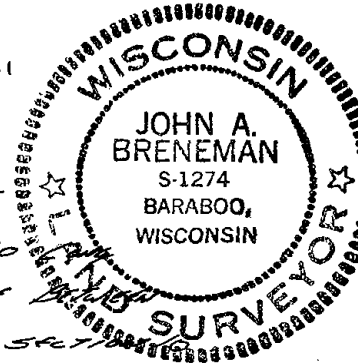
BASIS FOR MONUMENT LOCATION

(Use reverse side if necessary)

Show info such as: History of corner, with reference to Vol. and pg, dates, surveyor; exact description of monument replaced; if location computed, by taped or EDM traverse; landowner remarks, etc.

SEAL:

LOCATION (Indicated by 'X')



Checked County Survey Records - M.C. Smith Notes Jan. 1921 Page 81
Found I identified S.E. 1/4 Cor. Sec. 9. Ran extensive E.D.M.
Traverse of all of section 10 & 1/2 section 9.
Made excavation at intersection of fence line to east
and 1/2 4th Avenue. Excavated approximately 9' wide x 10'
x 4 1/2' deep. Found no evidence of post. By using a line
the established S. 1/4 Cor. Sec. 9 and the southeast corner section
the corner fell 6.5' south of the fence line to east and by
using a proportioned distance along this line the corner
positioned itself on center line of 4th Avenue.
By positioning the corner at this point of intersection the distance along the south
line of section 10 fits within 2' feet and the distance along the west line section 10 by
0.44' feet.

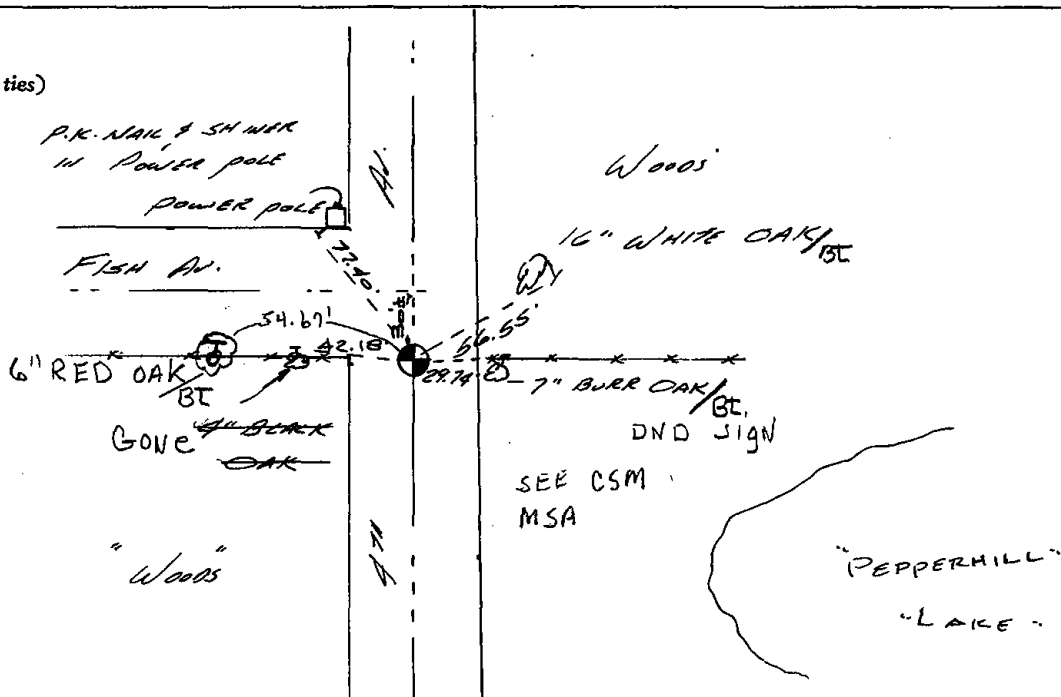
CERTIFIED CORRECT:

John A. Breneman
Registered Land Surveyor

DATE: July 13, 1977

TIE SKETCH

(Show at least four ties)



NOTE: ALL TIES TO TREES TAKEN TO P.K. NAILS AND SH NAILS

MAINTENANCE RECORD

Date	Init	Remarks
12-30-81	TH-VJ	Mon & ties o.k
2-3-86	GR-SJ	" "
3-26-91	JG	ALM OK
11-21-95	SS	OK
2-16-01	JG	OK
10-8-06	JG	OK