

PUBLIC LAND SURVEY MONUMENT RECORD

TYPE OF MONUMENT: SET 3/4" X 18" IRON REBAR, 1.50#/FT
ADAMS COUNTY COORDINATES, NAD 83 (2007)

N. 154050.687

E. 586331.504

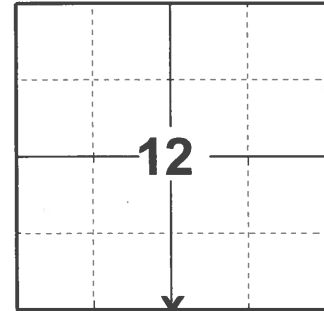
ELEVATION- DATUM

FIELD WORK DATE: 03/04/2021

BASIS FOR MONUMENT LOCATION

1974 - PLS 417 FOUND NO EVIDENCE OF CORNER, TIES OR WITNESSES. SET HARRISON MONUMENT ON A STRAIGHT LINE EQUIDISTANT BETWEEN SECTION CORNERS BASED ON COMPUTED COORDINATES. CORNER LANDS ON NORTH-SOUTH FENCE LINE.

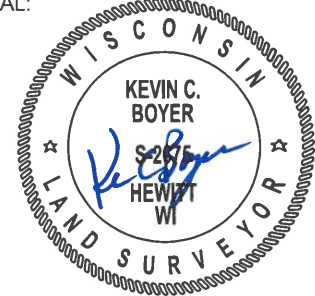
2021 - PLS 2675 FOUND NO EVIDENCE OF CORNER MONUMENT DUE TO RECENT DRIVEWAY CONSTRUCTION. FOUND 2 WITNESS TREES. COMPUTED CORNER LOCATION USING DISTANCE-DISTANCE INTERSECTION FROM 2 WITNESS TREES. THIS LOCATION PUTS THE CORNER ON A NEAR STRAIGHT LINE BETWEEN THE SOUTHEAST AND SOUTHWEST CORNERS OF SECTION 12 AND AGREES WITH SECTION SUMMARY DISTANCES OF SAID SOUTH LINE. LOCATION ALSO AGREES WITH THE SECTION TIE DISTANCE FOR CSM 6319 AND THE DISTANCES TO THE NORTHWEST AND SOUTHWEST CORNERS OF SAID CSM. ACCEPTED THE COMPUTED LOCATION FOR THE CORNER AND SET 3/4" X 18" IRON REBAR, 1.50#/FT AT LOCATION. SET 2 NEW TIES AND MEASURED TO 2 PROPERTY IRONS AND WITNESS TREES.



LOCATION

(INDICATE CORNER BY "X")

SEAL:



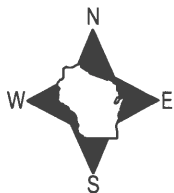
DATA SHOWN HERE ON THIS TIE SHEET IS CORRECT AND COMPLETE TO THE BEST OF MY KNOWLEDGE AND BELIEF.

PROFESSIONAL LAND SURVEYOR

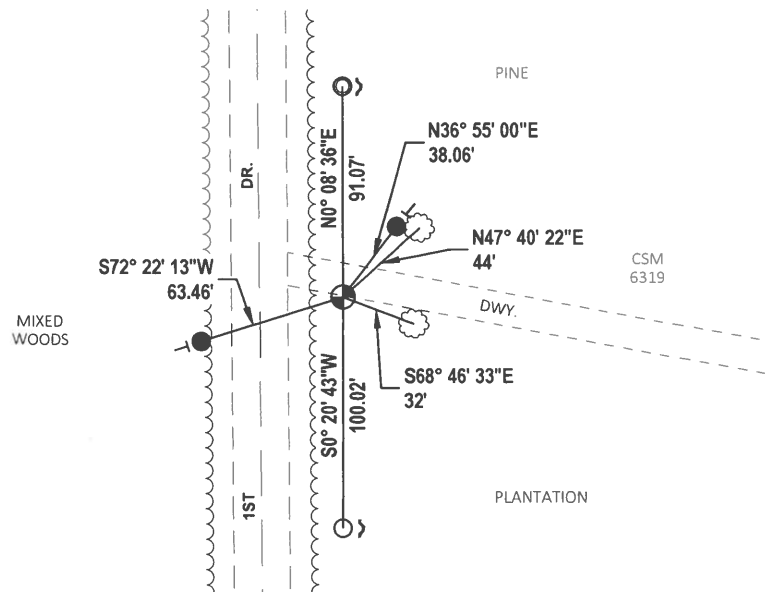
DATE 5/19/21

TIE SKETCH

NOTE: CORNER LANDS 7.5± SOUTH OF THE CENTERLINE OF DRIVEWAY.



- SET 3/4" x 18" IRON REBAR, 1.50#/FT
- FOUND 3/4" IRON ROD
- FOUND 1-1/4" O.D. IRON PIPE
- ⊕ SET 3/4" X 18" IRON REBAR, 1.50#/FT
- ~ STEEL FENCE POST
- ├ VINYL "T" POST
- ⊗ WITNESS TREE



ADAMS COUNTY

Survey Monument Record

TYPE OF MONUMENT: HARRISON

STATE PLANE COORDINATES: N _____

E _____

ELEVATION — M.S.L. DATUM: _____

THETA ANGLE: _____

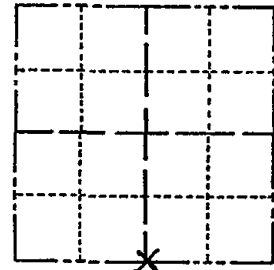
FIELD BOOK: 28 PAGE 14-20

CORNER NO. 360 (52)

SECTION 12

TOWN 15

RANGE 7



LOCATION (Indicated by 'X')

SEAL:

BASIS FOR MONUMENT LOCATION

(Use reverse side if necessary)

Show info such as: History of corner, with reference to Vol. and pg, dates, surveyor; exact description of monument replaced; if location computed, by taped or EDM traverse; landowner remarks, etc.

Set on a straight line equidistant between section corners on the basis of computed coordinates.

Corner located on existing North-South fence line.

Probed and dug in area, no other evidence found.



CORNER O.K. 10-28-76 RN-SS
" " 2-19-86 GR-SS
ALL OK 4-1-91 GR-JG
" " 3-26-96 JB-SS
2-28.01 JB-SS OK
3-NEW TIES, MON. OK, 3-8-06-JG

CERTIFIED CORRECT:

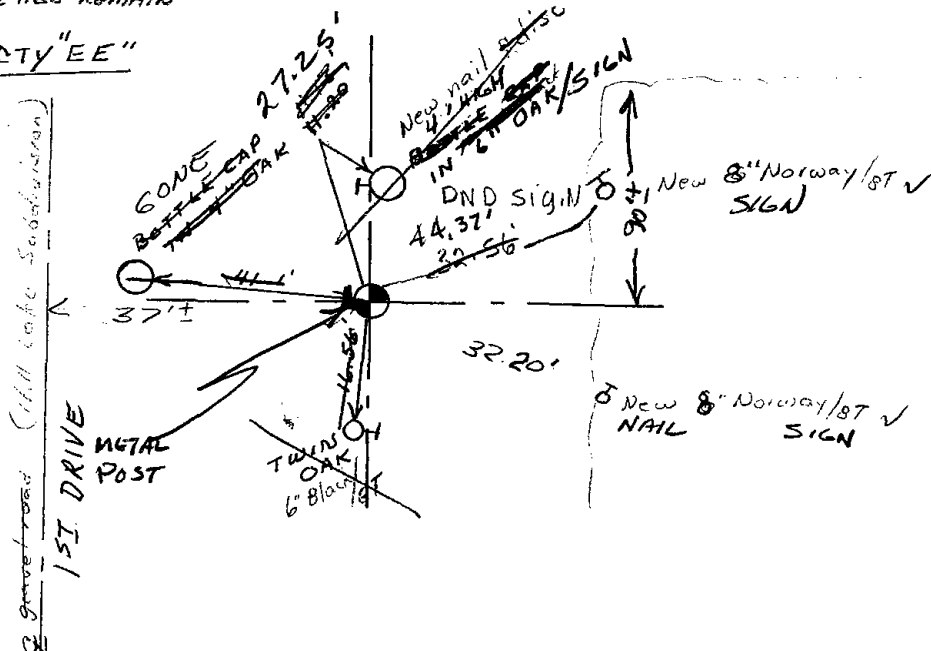
R. K. Saylor
Registered Land Surveyor

DATE: 1/15/74

2-18-11 Mon-2 TIES REMAIN

TIE SKETCH

(Show at least four ties) CTY "EE"



MAINTENANCE RECORD

Date	Init.	Remarks
12-30-81	THNT	MONEY TIES O.K.